

## YERATEL G — WESTPORT



**Судостроитель:** WESTPORT

**Год постройки:** 2003

**Модель:** Моторная яхта

**Цена:** ЦЕНА ЯХТЫ ПО ЗАПРОСУ

**Местонахождение:** Dominican Republic

**Длина общая:** 130' 0" (39.62m)

**Ширина:** 26' 0" (7.92m)

**Макс. осадка:** 6' 6" (1.98m)

**Крейс. скорость:** 20 Kts. (23 MPH)

**Макс. скорость:** 25 Kts. (29 MPH)

Купить YERATEL G — WESTPORT а также выбрать подходящую вам яхту из нашего каталога яхт вам поможет опытный яхтенный брокер Андрей Шестаков. На сегодняшний день компания Shestakov Yacht Sales Inc. имеет большое количество яхт в собственном списке продаж, а также тесно сотрудничает со всеми крупными яхтенными производителями по всему миру.

Для того чтобы купить яхту YERATEL G — WESTPORT а также проконсультироваться по любому вопросу связанному с покупкой, продажей, чартером яхт позвоните по телефону **+7(918)465-66-44**.

# ОГЛАВЛЕНИЕ

---

ОГЛАВЛЕНИЕ	2
ХАРАКТЕРИСТИКИ	5
Основная информация	5
Размеры	5
Скорость, вместимость и масса	5
Размещение	5
Корпус и палуба	6
Информация о двигателе	6
ПОДРОБНОЕ ОПИСАНИЕ	7
Walkthrough	7
Main Salon	7
Galley	8
Pilothouse	8
VIP Port & Stbd Staterooms	9
VIP Port & Stbd Guest Heads	9
Laundry Room	9
Captain & Crew Quarters	9
Engine & Mechanical Equipment	10
Control Room	10
Electrical System	10
Miscellaneous Equipment	10
Foredeck	11
Upper Deck/Boat Deck	11
Sundeck	12
Aft Deck	12
Remarks	12
Exclusions	12
Исключения	12

Отказ от ответственности	12
ФОТОГРАФИИ	14
Aft Deck	14
Aft Deck	14
Aft Deck	14
Aft Deck	14
Aft Deck Dining	14
Main Salon Looking Aft	14
Main Salon Looking Fwd.	15
Dining Area	15
Galley	15
Master	15
Master	15
Master	15
Master His and Her Vanities	16
Master His and Her Vanities	16
Master Shower	16
King Guest Stateroom	16
King Guest Stateroom	16
King Guest Head	16
Twin Guest Stateroom	17
Single Guest Stateroom	17
Skylounge	17
Skylounge	17
Jacuzzi on Upper Aft Deck	17
Upper Aft Deck Seating	17
Pilothouse	18
Pilothouse Seating	18
Sundeck BBQ and Wet Bar	18

---

Sundeck Fwd	18
Foredeck Seating	18
Sundeck Aft	18
Stern	19
Foredeck	19
YERATEL G - GA	19
YERATEL G running	19
<b>КОНТАКТЫ</b>	<b>20</b>
Контактная информация	20
Телефоны	20
Время работы	20
Адрес	20

# ХАРАКТЕРИСТИКИ

## Основная информация

Тип судна: Моторная яхта

Подкатегория: Tri-Deck

Модельный год: 2003

Год постройки: 2003

Страна: Dominican Republic

Верх: 2363

## Размеры

Длина общая: 130' 0" (39.62m)

Ширина: 26' 0" (7.92m)

Макс. осадка: 6' 6" (1.98m)

## Скорость, вместимость и масса

Крейс. скорость: 20 Kts. (23 MPH)

Дальность на крейсерской скорости:  
3450

Макс. скорость: 25 Kts. (29 MPH)

Чистый вес: 330 Pounds

Вместимость воды: 1620 Gallons

Вместимость сточного бака: 1360  
Gallons

Объем топливного бака: 9900 Gallons

## Размещение

Всего кают: 5

Спальные места: 9

Всего ком. состава: 7

Каюта капитана: Да

Каюты экипажа: 4

Койки экипажа: 5

Спальных мест экипажа: 6

## Корпус и палуба

---

**Материал корпуса:** Fiberglass

**Материал палубы:** Teak and Fiberglass

**Комплектация корпуса:** Modified V-Hull

**Дизайнер корпуса:** Bill Garden

**Дизайнер экстерьера:** Gregory C.  
Marshall Naval Architect Ltd.

**Дизайнер интерьера:** Pacific Custom  
Interiors

## Информация о двигателе

---

**Двигатели:** 2

**Производитель:** MTU

**Модель:** 12V 4000 M90

**Тип двигателя:** Inboard

**Тип топлива:** Diesel

---

# ПОДРОБНОЕ ОПИСАНИЕ

---

## Walkthrough

---

The foyer leads you aft to the spacious main salon and formal dining area. Looking all the way aft on the port side there is a game table with four upholstered chairs. Moving forward one finds two comfortable chenille covered sofas on both sides facing each other with an oriental rug in the center creating a casual conversation area. A 40 inch flat screen TV hidden (raised and lowered by remote) in a cherry wood buffet with granite countertop separates the salon from the dining area. The dining table accommodates ten guests. Forward to port is the galley with plenty of storage and Corian countertops, very nicely appointed with professional appliances inclusive of a pop-up vent for the six burner stove. All equipment is stainless steel and features ample seating in the U-shaped dinette nook that is perfect for a casual breakfast or lunch.

Further forward is the on deck master stateroom with centerline king size bed with innerspring mattress and upholstered headboard. The master bathroom has Crema Marfil marble tiles, whirlpool bath, etched-glass enclosed shower, his & her vanities with Kohler vintage sink, and two Headhunter Royal Flush Hydro Vac toilets. Mid ship stairs lead down to the four guest staterooms located just off the foyer equipped with laundry facilities. Each stateroom is elegantly decorated and has an ensuite head with enclosed shower. Two (2) king berths, one (1) twin berth stateroom and one (1) single berth stateroom with a treadmill (no second berth). Forward of the skylounge is the pilothouse with raised semi-circular seating for all guests to enjoy the view while cruising. All the way port is the navigation station. There are very nice walk-around side decks with pilothouse entry doors, and a staircase centerline going forward down to the foredeck where there is a circular seating area (nook) with excellent visibility while cruising & a iPod docking station. The sundeck features two built-in seating areas forward with tables, a wet bar, barbeque and a large sun area with adjustable chaise lounges. Leading aft from the main salon through the double stainless steel doors is the beautiful and spacious aft deck which is one of the nicest features of **YERATEL G**. A large teak circular table seats eight guests, occasional chairs to port and starboard, as well as banquette seating across the transom. All is protected by the aft deck overhang. On the port corner is a very comfortable walk-behind, full service bar with icemaker and refrigerator, and three teak bar chairs with cushions. Positioned perfectly behind the bar, and raised for unobstructed view by all, is a 32 inch LCD flat screen TV. To starboard are steps leading from the aft deck to the upper deck. The upper deck consists of an L-shaped settee and a 6-8 person Jacuzzi hot tub. To starboard entering through a double sliding door is the skylounge which offers a complete entertainment center with 42 inch TV, wet bar, game table, and large windows offering a panoramic view while cruising or at anchor. The sundeck is accessed via a staircase from the boat deck.

## Main Salon

---

• (1) Cocktail table • (1) Gaming table • (4) Game chairs • (2) End tables • Wood formal dining table with eight chairs • Stainless steel framed glass sliding door • 40" PAL/NTSC LCD flat screen TV on electric lift w/remote in forward cabinet • Crestron 4" touch panel remote • 200 hour

Apple TV • iPod docking station • VCR • Surround sound system with speakers • Storage for CDs, video tapes and DVDs • Fixed Roman shades • Wine Enthusiast compact 50 wine cooler in custom cherry cabinet • New custom dining table with burl inlays done in high gloss

## Galley

---

- Espresso machine & drip coffee machine
- 48 inch Kitchen Aid refrigerator
- Insinkerator garbage disposal
- Asko dishwasher
- Stainless Sharp microwave
- Azrock commercial vinyl flooring
- Stainless steel sink
- Built-in dinette settee
- Corian counter tops
- 20" LCD flat screen TV with DVD combo
- Miele commercial dishwasher
- (1) Gaggenau induction Teppanyaki cooktop
- Stainless steel Island hood
- (2) Gaggenau induction cooktops
- iPod connection cables

## Pilothouse

---

• Stainless steel 24" Destroyer Wheel with Jastrom Power Steering • Engine Instrumentation - DDC/MTU DDEC • AM/FM/CD Player with speakers, and VCR • Counters - black laminate with cherry trim • Stain resistant carpeting • SART pilothouse console • Leather covered dash panels • Chart drawer for chart storage • Leather settee • Madrona Burl with solid cherry edge settee table • (2) Crown classic helm chairs • Desk with laptop pc storage & swing-out stool • Secondary fully integrated redundant Nav computer



---

## VIP Port & Stbd Staterooms

---

- California king size beds with innerspring mattresses & upholstered headboards and two-drawer storage under
- 110V AC recessed room lights
- Indirect rope accent lighting under berth and above soffit
- Clear full length mirror on wardrobe door, inside door
- Lined aromatic cedar wardrobe with automatic light, stainless closet rod and cedar shelf with keeper
- Shoji screen blinds
- (2) three-drawer nightstands
- Entertainment center with cherry doors
- 26" LCD flat screen TV
- 200 hour Apple TV
- iPod connection cables
- Denon Stereo receiver

---

## VIP Port & Stbd Guest Heads

---

- Headhunter Royal Flush Hydro Vac toilets
- Frameless shower with tempered glass doors and Grohe thermostat and Hansa fixtures with sealed shower light
- Light Emparador lightweight marble floor
- Kohler vintage sinks, with Jado Oriental fixtures, with silver nickel/gold finish
- Wall mirror above vanity
- 110V AC recessed room lights and vanity lighting

---

## Laundry Room

---

- Maytag washer & dryer stack unit

---

## Captain & Crew Quarters

---

Captain's cabin is built by Westport standards, this had a feed from the Transas navigation system into the TV (retro-fitted with a B&G Hydro 20/20 display repeater)

- Captain has custom full size berth with storage below and crew has four
- (4) Custom twin berths with US foam fire-rated mattresses
- Doors are solid cherry framed with Madrona burl panels
- Crew lounge/galley with upholstered settee
- Built-in refrigerator/freezer
- Sharp stainless steel microwave
- Stainless steel sink
- 110V AC recessed room lights, 12V DC reading lights
- Wardrobe is lined with aromatic cedar, automatic light, stainless closet rod and clear shelf with keeper
- Maytag washer & dryer
- Entertainment center in captain & crews quarters cabin with 20" PAL/NTSC LCD flat screen TV
- TV/DVD Combo, AM/FM/CD player & (1) pair of speakers
- Captain quarters iPod connection cables
- Port & starboard crew quarters have stereo volume control & speakers
- Entertainment center in crew lounge with 20" TV/DVD player & (1) pair speakers
- 200 hour Apple TV
- Crew Lounge: iPod connection cables
- All crew berths equipped with 11" flip down TV/DVD with independent headphone system.

---

## Engine & Mechanical Equipment

---

• Main engines: Twin MTU 12V 4000 M90 • Twin disc 2:5:1 ratio • Bow thruster - Wesmar 16" 50HP with dual prop • Naiad Model 5202.50 • Roll Stabilizer system with two 25.1 ft<sup>2</sup> fins with Stabilization at Sea (zero speed) capability • Props - 50" x 44" five (5) blade Michigan • Rudders - 10 sq. ft. with dripless logs • Watermakers - (2) Sea Recovery 1200 GPD each • Fresh water system - (2) 220V pumps w/24V back-up pump • Thirteen (13) auto/manual 24V bilge pumps, (2) 110V AC pumps with 1 ½" lines with manifold • Air compressor - 220V with water separator, regulator, 18' self coiling hose with quick disconnect • Fuel filters - dual Detroit Separ main engines, single filter generators • Steering - Jastrom commercial grade w/dual pumps • Shafts Aquamet 22 4 ½" w/ dripless shaft logs • Air conditioning - Aqua Air chilled water system with make up air with variable frequency drives approximately 20 tons • Lube oil change system - 110V pump with quick disconnect • Gensets, main engines, gears, 78 gallon fresh oil, 33 gallon waste oil tank • Fuel transfer system - 110V with timer & flo meter • Head System - Head Hunter fresh water with 240V + 24V discharge pumps and fiberglass 1360 gallon holding tank • Grey Water System - 940 gallon tank with 110V + 24V pumps • Fire System - FM200 auto/manual • Windshield wipers - (3) Exalto w/delay & freshwater washdowns

---

## Control Room

---

• Sears (12) drawer tool box painted white with tools • Work bench with 4" vise • Storage cabinets • (2) 1200 GPD watermakers

---

## Electrical System

---

• (2) 65kW 1800 RPM Northern Lights generators with sound shield, muffler, exhaust water separator, pilothouse remote start. Hours since overhaul: Port 1828 Stbd. 1938 (June 20, 2014) • All gel-cell type batteries • Battery chargers • (3) King heater/defrosters on pilothouse windshield • (2) 12V DC lights, at navigator's area and captain's desk • (2) 100 amp isolation transformers on each inlet with boost capability • 110V AC halogen recessed light fixtures • 24V & 110V AC indirect rope lighting • Shore Power - (1) 100 amp receptacle w/100' shore cord & (1) 100 amp Glendinning reel with a 100' cord in starboard bustle • TV & phone connections located at Glendinning with (1) 100' TV phone cord • Optional back-up hydraulic pump for anchor system • All distribution panels have engraved faceplates • Exterior lighting at house sides, foredeck, aft deck stairs, aft deck overhang & flybridge deck lights • Lightning protection with hull Dyna plate & mast probe • All staterooms have 110V receptacles for table lamps, except crew quarters have 24V receptacles • (1) searchlight located on mast with single control ACR-100 • 24V DC shower lights with white trim • Navigation lights with operation monitored by VIC system, includes bow light, stern light, side lights & anchor light • Smart "Y" electrical adaptor • General lighting - Vimar receptacles & switching throughout • ASEA 75 1/2N Shore Power Converter

---

## Miscellaneous Equipment

---

• 17' Novurania 530 Deluxe with 4-stroke 115hp Yamaha, VHF, compass & transom ladder • Sunbrella covers for: flybridge settee, tables, seating, tender, bow seat and aft deck seating • Northern Lights spare parts kit • Sea Recovery spare parts kit • Ship spare kit • Opacmare two-section hydraulic passerelle with handrail and wireless control • (1) Marquipt 24" x 9 step sea stair boarding ladder w/port & starboard mounts • Custom swim ladder on transom • Bow & stern flag staffs • Port lights - Freeman with screens • Anchors - dual Poole style 270 kg (1) 400' x 5/8' chain, (1) 300' x 5/8' chain with Maxwell #6000 hydraulic winches & chain • (2) Maxwell 3500/24V capstans on the stern • Utility storage aft with Traulsen commercial double wide • Stainless steel refrigerator/freezer, dive compressor aft engineer cabin with custom size berth, dresser, wardrobe, head with vanity & stall shower, air conditioning, 13" TV with VCR, AM/FM stereo with CD • (1) 9 step Deluxe Marquipt 24" boarding ladder with brackets at port & starboard gates • Custom swim ladder on transom, powder coated white, bottom of ladder painted black to match hull • Cushions aft deck settee, bow sun pad, boat deck lounge settee and observation deck settee, Sunbrella fabric with dry fast foam fill • Stern flagstaff rigged with 1/8" nylon line, bow jack staff rigged with 1/8" nylon line • Wheel puller - Built to pull vessel propellers • Gas tank - 100 gallon in swim platform with air dispensing pump • Dripless shaft & rudder logs • Dual steering & stabilizer pumps on main engines • Lightning protection with Dyna plate and mast probe • Wing stations port & starboard on Portuguese bridge with electronic engine controls, synchronizer, start & stops, jog lever, bow thruster and rudder indicator • (1) Charles Smart "Y" 100 shore adaptor • Swim Ladder - Custom on transom, powder coated white (bottom of ladder painted black to match hull) • Wing doors outside skylounge • A Headhunter MSD sewage treatment plant added in 2007 • Bottom job done in May of 2013 • Six step Westport configured stainless steel Marquipt swim ladder

## Foredeck

• Bow sun lounge with cushions, cover storage locker below teak Sunshade umbrella • Storage lockers below • Built-in keyhole seat with cushions & covers, remote stereo speakers with volume control

## Upper Deck/Boat Deck

• Jacuzzi hot tub with 11Kw heater • Optional factory hardtop over flybridge/sundeck • (2) molded seats with cushions & covers • Molded-in settee with cushions, cover and locker space under • 40" teak cocktail table • Nautical Structures davit 2000 lbs. hydraulic davit CEZ2000-EX • Nautical Structures tender lift bridle • Small cocktail table with folding legs (on sundeck) • Life raft 16 man Zodiac canister life raft with chocks • (2) Wing stations with electronic engine controls just outside pilothouse port & starboard • Stern flagstaff with 5' x 8' Marshall Islands flag • 27" Wega screen TV • (5) Disc CD changer • Surround sound system with speakers • Tender 17' Novurania and 115hp Yamaha outboard with cover, GPS depth finder • Audio/Video volume control & speakers from main system

---

## Sundeck

---

• Molded settee with cushions & covers and (2) tables (no covers for FB tables) • Sun lounge with cushions and covers • Wet bar with Corian top, sink, hot & cold water, TV/phone jacks, Whirlpool icemaker, Nor-Cold refrigerator, BBQ-Jenn-Aire electric grill & BBQ-stainless steel cover • Pioneer audio/video • AM/FM Stereo with CD player • Custom Venturi windshield in polished stainless steel frame • Kahlenburg air horn • Welded aluminum mast with electronics, anchor light, deck lighting and air horn with optional hard top • Double optional Stidd seat • Storage lockers were retro-fitted under port & starboard bench seats

---

## Aft Deck

---

• Aft deck bar with TV/Phone jacks, Whirlpool refrigerator, Whirlpool icemaker, Corian Magna Savannah top, sink with hot & cold water, & storage • Molded-in settee with cushions & covers • (1) teak bench with cushions & two (2) teak serving trays for bench • 72" round Westcoast teak dining table with fixed polished stainless steel pedestal by Crown, Ltd. • (8) teak dining chairs with cushions • (3) teak bar chairs with cushions • (2) teak lounge chairs with cushions • (1) teak side table • 32" PAL/NTSC LCD flat screen TV • Stereo volume control & speakers from main system • Isinglass aft deck enclosure panels retro-fitted • Textaline privacy screen • iPod connection cables

---

## Remarks

---

"YERATEL G" is an excellent example of this popular Tri-Deck Motoryacht featuring the fastest cruise speeds in her class combined with a user friendly 6' 6" draft, large aft deck, five stateroom layout combined with her traditional satin finished cherry wood paneled interior makes this an impeccably maintained yacht.

---

## Exclusions

---

Exclusions include all of Owner's personal effects. Exclusion list of art work and other items available upon request.

---

## Исключения

---

При продаже яхты исключаются личные вещи владельца.

---

## Отказ от ответственности

---

Компания предоставляет описание судна или яхты добросовестно, но не может гарантировать точность этой информации, а также не ручается за техническое

состояние. Покупатель должен проинструктировать своих агентов или оценщиков исследовать представленную информацию более подробно, по собственному желанию. Продажа судна или яхты, изменение цены или снятие с продажи будет происходить без предварительного уведомления.

# ФОТОГРАФИИ

**Aft Deck**



**Aft Deck**



**Aft Deck**



**Aft Deck**



**Aft Deck Dining**



**Main Salon Looking Aft**



**Main Salon Looking Fwd.**



**Dining Area**



**Galley**



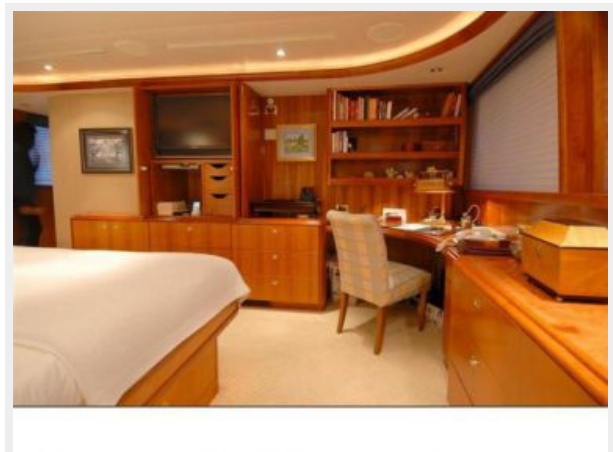
**Master**



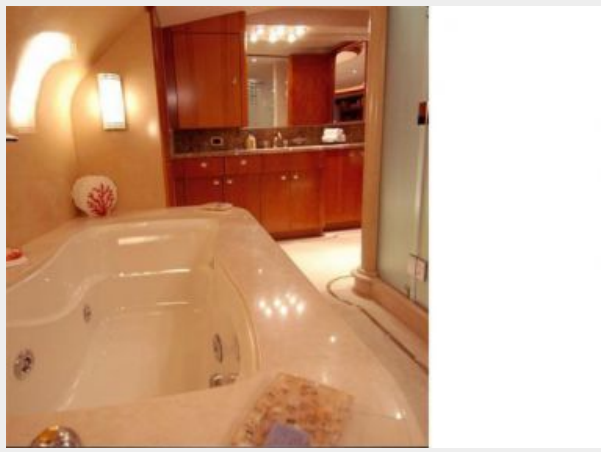
**Master**



**Master**



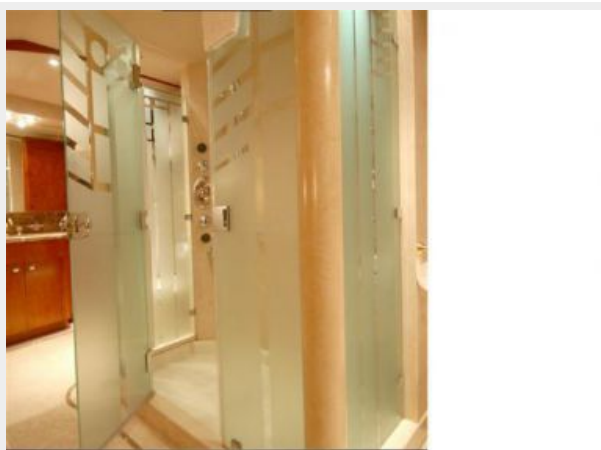
**Master His and Her Vanities**



**Master His and Her Vanities**



**Master Shower**



**King Guest Stateroom**



**King Guest Stateroom**



**King Guest Head**





**Twin Guest Stateroom**



**Single Guest Stateroom**



**Skylounge**



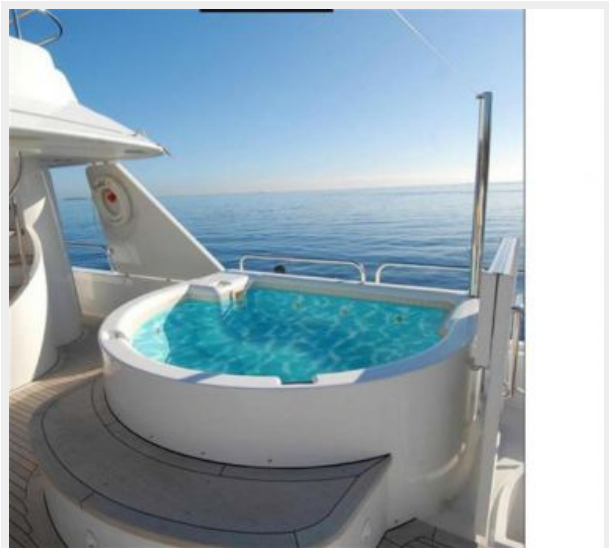
**Skylounge**



**Upper Aft Deck Seating**



**Jacuzzi on Upper Aft Deck**



**Pilothouse**



**Pilothouse Seating**



**Sundeck BBQ and Wet Bar**



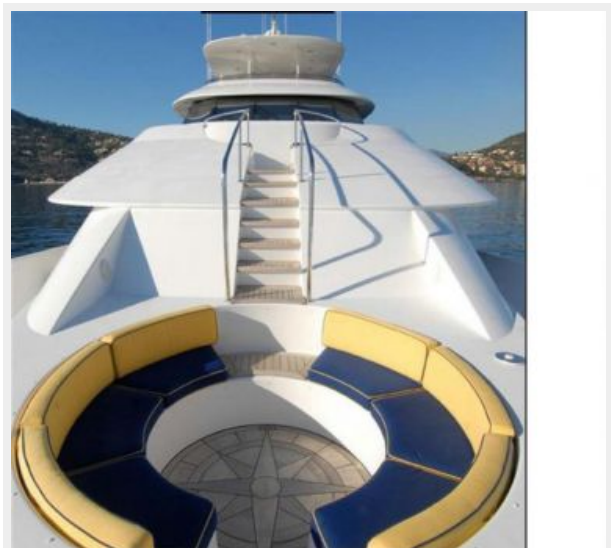
**Sundeck Fwd**



**Sundeck Aft**



**Foredeck Seating**



**Foredeck**



**Stern**



**YERATEL G running**



**YERATEL G - GA**



# КОНТАКТЫ

---

Андрей Шестаков (Andrey Shestakov) – ведущий яхтенный брокер отдела продаж яхт и судов компании Shestakov Yacht Sales Inc. Официальный представитель Shestakov Yacht Sales Inc. для русскоговорящих клиентов в центральном офисе компании в Майами/Форт Лодердейл/Флорида/США.

## Контактная информация

---

Email: [andrey@shestakovyachtsales.com](mailto:andrey@shestakovyachtsales.com)

Web: [shestakovyachtsales.com](http://shestakovyachtsales.com)

## Телефоны

---

Краснодарский край: **+7(918)465-66-44**

США, Майами, Флорида: **+1(954)274-4435**

## Время работы

---

Понедельник – Суббота: **9:00 - 21:00**  
EDT

Воскресенье: **Закрито**

## Адрес

---



Harbour Towne Marina, 850 NE 3rd St,  
STE 213, Dania, FL 33004