

BUENA ONDA — COLUMBIA



Builder: COLUMBIA

Year Built: 1968

Model: Cruising Sailboat

Price: PRICE ON APPLICATION

Location: Aruba

LOA: 35' 7" (10.85m)

Beam: 10' 5" (3.17m)

Max Draft: 5' 4" (1.63m)

Cruise Speed: 5 Kts. (6 MPH)

Max Speed: 7 Kts. (8 MPH)

Our experienced yacht broker, Andrey Shestakov, will help you choose and buy a yacht that best suits your needs Buena Onda — COLUMBIA from our catalogue. Presently, at Shestakov Yacht Sales Inc., we have a wide variety of yachts available on our sale's list. We also work in close contact with all the big yacht manufacturers from all over the world.

If you would like to buy a yacht Buena Onda — COLUMBIA or would like help answering any questions concerning purchasing, selling or chartering a yacht, please call +1(954)274-4435

TABLE OF CONTENTS

TABLE OF CONTENTS	2
SPECIFICATIONS	3
Overview	3
Basic Information	3
Dimensions	3
Speed, Capacities and Weight	3
Accommodations	3
Hull and Deck Information	4
Engine Information	4
DETAILED INFORMATION	5
Accommodations	5
Engine	5
Navigation	5
Electrical Equipment	5
Deck Equipment	5
Sail & Rigging	6
Additional	6
Exclusions	6
Disclaimer	6
PHOTOS	7
CONTACTS	11
Contact details	11
Telephones	11
Office hours	11
Address	11

SPECIFICATIONS

Overview

Basic Information

Category: Cruising Sailboat

Sub Category: Cruising Sailboat

Model Year: 1968

Year Built: 1968

Refit Year: 2010

Country: Aruba

Dimensions

LOA: 35' 7" (10.85m)

LWL: 27' 7" (8.41m)

Beam: 10' 5" (3.17m)

Max Draft: 5' 4" (1.63m)

MFG Length: 36' 0" (10.97m)

Speed, Capacities and Weight

Cruise Speed: 5 Kts. (6 MPH)

Max Speed: 7 Kts. (8 MPH)

Displacement: 12000 Pounds

Water Capacity: 33 Gallons

Fuel Capacity: 2730 Gallons

Accommodations

Total Cabins: 1

Sleeps: 4

Total Heads: 1

Hull and Deck Information

Hull Material: Fiberglass

Hull Configuration: Fin & Spade

Hull Color: Blue

Hull Designer: William Crealock

Engine Information

Engines: 1

Manufacturer: Atomic

Model: Universal

Fuel Type: Gas

DETAILED INFORMATION

Accommodations

The Columbia 36 interior layout features a large v-berth which serves as the owner's stateroom. Aft of the v-berth and to Port is the Head. To Starboard is the teak captain's/chart desk, cushioned seat, and storage lockers (above and below), and a magazine/chart rack. Moving aft past this bulkhead is a "U" shaped settee to Port with a dinette table which lowers to form a Queen sized berth, and a convenient storage shelf above. To Starboard is the galley featuring an ice box, single bowl SS sink, a gimbaled three burner alcohol stove with oven, and lastly is a sliding door storage cabinet, plate rack and four teak drawers for dishes, flatware, etc. Aft of the main cabin is the steps to the cockpit, and the Engine compartment below. The cockpit features two large bench seats both port and stbd, a lazarette hatch with doubles as helmsman's bench seat.

Engine

Universal Atomic four (1978), 4 cylinder, raw water cooled gas engine Exhaust exits the engine thru cast iron elbow and insulated pipe to Verna-lift muffler and through transom. All unions are appropriately double-clamped. Steering is by wheel mounted pedestal w/wire quadrant. Gasoline tank was replaced in 2010

Navigation

Standard Horizon GX2100 VHF radio with AIS with mast head mounted antenna (VHF wire in mast needs to be reconnected) Standard Horizon HX280S handheld VHF Garmin GPSmap 441s Plotter with integrated depth sounder. Digital maps of East Coast USA to Eastern (2010) & South-western Caribbean (2011) Complete set of paper charts East coast USA to Eastern Caribbean Grundig G3 SSB radio Cockpit features 5" Ritchie Compass pedestal mounted at Steering Wheel. Navico 5000 Autopilot

Electrical Equipment

30 Amp Shore Pwr cable ProSport 20 Amp Dual bank battery charger Atomic 4 Alternator for charging underway 2x 85W ULSolar Solar Panels (2010) 1 house battery and 1 Start Battery. Ready-made space available for 2nd house battery 800W Cobra inverter, used mainly for fridge, coffee and for charging mobile electronics AM/FM Stereo/CD Player with two Speakers Buena Onda has an AC Shore power panel and a separate DC Panel.

Deck Equipment

The hull of the Columbia 36 is sound. New bottom paint necessary She has a spade Rudder,

Manual Wheel Steering 25 Bruce Anchor w/15' chain and 100' rode 20 Danforth anchor with w/100' rode. # Attwood 1250 Bilge Pump with float switch # Swim Ladder at Stern Bimini top Sprayhood

Sail & Rigging

Buena Onda is a sloop rigged sailer. She has a 6 oz. main with two reef points, Columbia 36 insignia and #72, 1996 by Kerr-Tulsa sailmakers, Hank on 6 oz. Storm Jib with stainless wire 135% Working Jib 160% Genoa Orange and Green lightweight Drifter Red, White, Blue Spinnaker Note: The jib can be sailed as a "Club footed" sail Aluminum jib boom or whisker pole Aluminum Spinnaker Pole Stainless Standing rigging Cunningham, SS Traveler 2 Barlow #28 Primary Winches 2 Barlow #20 secondary/spinnaker winches 2 Barlow #18 mast mounted winches a SS winch handle/crank jib travelers with snatch blocks

Additional

ADDITIONAL EQUIPMENT: 4 persons Caribe hard bottom dinghy 6HP Evinrude outboard engine Spare Boat 2 Pers inflatable with plywood bottom Green Sunbrella Cockpit Bimini Green Sunbrella Dodger with new lites Green Sunbrella Awning Full set of cabin top covers in good condition 2 gas-insert life vests Four orange life vests Cockpit cushions with lite weight removable canvas covers Engine compartment blower Two USCG type B-1 Fire Extinguishers Flare gun with cartridges Complete tool-set including 12V saws & drills # Lots and lots of spare parts

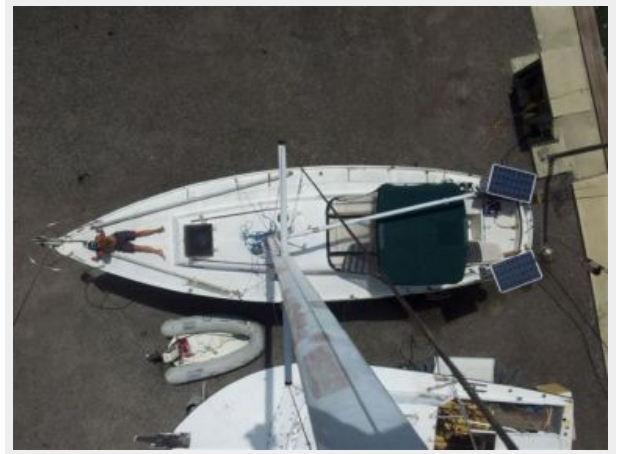
Exclusions

Owner's personal belongings.

Disclaimer

The Company offers the details of this vessel or yacht in good faith but cannot guarantee or warrant the accuracy of this information nor warrant the condition of the vessel. A buyer should instruct his representatives, agents, or his surveyors, to investigate such details as the buyer desires validated. This vessel or yacht is offered subject to prior sale, price change, or withdrawal without notice.

PHOTOS









CONTACTS

Andrey Shestakov, leading yacht broker of the sales department of Shestakov Yacht Sales Inc. Shestakov Yacht Sales Inc., the official representative of the Miami/Fort Lauderdale FL headquarters.

Contact details

Email: andrey@shestakovyachtsales.com

Web: shestakovyachtsales.com/en/

Telephones

USA: +1(954)274-4435

Office hours

Monday – Saturday: **9:00 - 21:00** EDT

Sunday: **closed**

Address



Harbour Towne Marina, 850 NE 3rd St,
STE 213, Dania, FL 33004