

## GULLWING — MIKELSON



**Builder:** MIKELSON

**Year Built:** 1998

**Model:** Motor Yacht

**Price:** PRICE ON APPLICATION

**Location:** United States

**LOA:** 43' 0" (13.11m)

**Beam:** 15' 10" (4.83m)

**Min Draft:** 3' 6" (1.07m)

**Max Draft:** 3' 6" (1.07m)

**Cruise Speed:** 16 Kts. (18 MPH)

**Max Speed:** 24 Kts. (28 MPH)

Our experienced yacht broker, Andrey Shestakov, will help you choose and buy a yacht that best suits your needs **Gullwing — MIKELSON** from our catalogue. Presently, at Shestakov Yacht Sales Inc., we have a wide variety of yachts available on our sale's list. We also work in close contact with all the big yacht manufacturers from all over the world.

If you would like to buy a yacht **Gullwing — MIKELSON** or would like help answering any questions concerning purchasing, selling or chartering a yacht, please call **+1(954)274-4435**

# TABLE OF CONTENTS

---

TABLE OF CONTENTS	2
SPECIFICATIONS	5
Overview	5
Basic Information	5
Dimensions	5
Speed, Capacities and Weight	5
Accommodations	6
Hull and Deck Information	6
Engine Information	6
DETAILED INFORMATION	7
43' Mikelson Overview	7
43' Mikelson Vessel Walkthrough	7
43' Mikelson Accommodations	7
43' Mikelson Salon	7
43' Mikelson Galley	7
43' Mikelson Dining	8
43' Mikelson Master Stateroom	8
43' Mikelson Guest Stateroom	8
43' Mikelson Flybridge	8
43' Mikelson Cockpit	8
43' Mikelson Audio/Visual Equipment	9
43' Mikelson Electronics	9
43' Mikelson Electrical System	9
43' Mikelson Engine/Mechanical Equipment	9
43' Mikelson Deck Equipment	10
43' Mikelson Hull	10
43' Mikelson Safety & Fire Protection	11
43' Mikelson Exclusions	11

43' Mikelson Disclaimer	11
Exclusions	11
Disclaimer	11
PHOTOS	12
43' Mikelson port profile photo2	12
43' Mikelson starboard aft profile	12
43' Mikelson aft profile	12
43' Mikelson anchor windlass	12
43' Mikelson foredeck	13
43' Mikelson foredeck aft	13
43' Mikelson port side deck	13
43' Mikelson flybridge forward	13
43' Mikelson flybridge aft	13
43' Mikelson flybridge seating	13
43' Mikelson flybridge aft station	14
43' Mikelson cockpit photo1	14
43' Mikelson cockpit photo2	14
43' Mikelson swimplatform	14
43' Mikelson salon forward	14
43' Mikelson salon aft	14
43' Mikelson salon port seating photo1	15
43' Mikelson salon port seating photo2	15
43' Mikelson salon starboard aft photo1	15
43' Mikelson salon starboard aft photo2	15
43' Mikelson salon dinette photo1	15
43' Mikelson salon dinette photo2	15
43' Mikelson galley photo1	16
43' Mikelson galley photo2	16
43' Mikelson master stateroom	16

43' Mikelson master stateroom forward	16
43' Mikelson guest stateroom	16
43' Mikelson head	16
43' Mikelson mid bilge storage compartment port	17
43' Mikelson mid bilge storage compartment	17
43' Mikelson mid bilge storage compartment starboard	17
43' Mikelson mid bilge storage compartment forward	17
43' Mikelson engine compartment access	17
43' Mikelson engine compartment starboard	17
43' Mikelson port engine compartment	18
43' Mikelson port main engine	18
43' Mikelson starboard engine compartment	18
43' Mikelson starboard main engine	18
43' Mikelson fuel manifold	18
43' Mikelson generator	18
43' Mikelson hauled out photo1	19
43' Mikelson hauled out photo2	19
43' Mikelson hauled out photo3	19
43' Mikelson hauled out photo4	19
43' Mikelson port running gear	19
43' Mikelson starboard running gear	19
CONTACTS	20
Contact details	20
Telephones	20
Office hours	20
Address	20

---

# SPECIFICATIONS

---

## Overview

---

Gullwing is a very popular and well-respected Mikelson 43 Convertible in very good condition. She receives constant praise for her condition and maintenance schedule from everyone who sees her. She has quite a pedigree, given that she was originally Tom Fexas' personal yacht. Gullwing is a very comfortable, open and airy and well laid out yacht that anyone would be proud to own. Price reduced!

## Basic Information

---

**Category:** Motor Yacht

**Sub Category:** Convertible

**Model Year:** 1998

**Year Built:** 1998

**Country:** United States

**Coast Guard #:** 1164994/Bradenton, FL

**Fly Bridge:** Yes

**Cockpit:** Yes

## Dimensions

---

**LOA:** 43' 0" (13.11m)

**Beam:** 15' 10" (4.83m)

**Min Draft:** 3' 6" (1.07m)

**Max Draft:** 3' 6" (1.07m)

## Speed, Capacities and Weight

---

**Cruise Speed:** 16 Kts. (18 MPH)

**Max Speed:** 24 Kts. (28 MPH)

**Displacement:** 38000 Pounds

**Gross Tonnage:** 36 Pounds

**Water Capacity:** 200 Gallons

**Holding Tank:** 100 Gallons

**Fuel Capacity:** 600 Gallons

---

## Accommodations

---

**Total Cabins:** 2

**Total Berths:** 3

**Sleeps:** 4

**Total Heads:** 1

---

## Hull and Deck Information

---

**Hull Material:** Fiberglass

**Deck Material:** Composite

**Hull Configuration:** Modified V-Hull

**Hull Color:** Light Grey

**Hull Finish:** Fiberglass

**Hull Designer:** Tom Fexas

---

## Engine Information

---

**Engines:** 2

**Manufacturer:** Caterpillar

**Model:** 3126

**Engine Type:** Inboard

**Fuel Type:** Diesel

---

# DETAILED INFORMATION

---

## 43' Mikelson Overview

---

Gullwing is a very popular and well-respected Mikelson 43 Convertible in very good condition. She receives constant praise for her condition and maintenance schedule from everyone who sees her. She has quite a pedigree, given that she was originally Tom Fexas' personal yacht. Gullwing is a very comfortable, open and airy and well laid out yacht that anyone would be proud to own. Price reduced!

## 43' Mikelson Vessel Walkthrough

---

Entering the salon through the large sliding glass door, you find a desk starboard aft, dinette starboard forward, L-shaped seating with ottomans/coffee table port aft and galley port forward. Step down the companionway and you find the head to starboard, guest stateroom to port and master stateroom forward. There is a huge storage area under the salon. Access is by lifting the steps from the salon. The engine room is under the cockpit and offers plenty of room with good access to all equipment. There is a stainless steel/teak ladder to the flybridge in the starboard forward cockpit. The interior is a beautiful Cherry wood and Gullwing is in very good condition throughout.

## 43' Mikelson Accommodations

---

Gullwing offers a master stateroom with centerline queen size berth forward and a guest stateroom to port with offset over/under bunks. The head is located to starboard with a fully enclosed shower.

## 43' Mikelson Salon

---

The very large, open and airy salon offers a desk starboard aft, dinette starboard forward, galley port forward and L-shaped seating with ottomans/coffee table port aft. There are large side windows, large glass aft door and large aft window to make this salon feel very open and light.

## 43' Mikelson Galley

---

The large galley is located port forward in the salon.

- Princess 3-burner electric cooktop
- GE Profile convection/microwave oven

- Dometic 12vdc/110vac refrigerator/freezer
- Formica countertops
- Teak & Holley sole
- Stainless steel sink
- Coolmatic refrigerator on flybridge

---

## 43' Mikelson Dining

---

Dining space is available in the salon at the starboard forward dinette and on the flybridge at the half round seating with table.

---

## 43' Mikelson Master Stateroom

---

The master stateroom is located forward and offers a centerline queen size berth, hanging lockers, storage drawers, overhead deck hatch and portlights for plenty of natural light and ventilation. The ensuite head is to starboard and just aft of the master stateroom.

---

## 43' Mikelson Guest Stateroom

---

The guest stateroom is located to port aft of the master stateroom and offers offset over/under bunks, portlight and overhead deck hatch, carpet, storage drawers and hanging locker. The head is to starboard.

---

## 43' Mikelson Flybridge

---

Gullwing's large flybridge offers a hardtop with newer EZ2CY forward and Eisenglass aft and on the sides. There is a full console forward, benchseat to starboard and half-round seating with a table to port. There is also a control station port aft with a magnetic compass, engine controls and steering wheel. There is carpet over non-skid deck and a Coolmatic refrigerator. This is a very comfortable area in all weather.

---

## 43' Mikelson Cockpit

---

The huge cockpit offers teak decking, a benchseat/storage forward, sliding aft salon window, transom fishbox, transom door, swimplatform, engine room hatches and a stainless steel/teak ladder to the flybridge. There is a canvas awning extended from the flybridge aft over the cockpit. The canvas and cushions were new in 2009.



---

## 43' Mikelson Audio/Visual Equipment

---

- Sony AM/FM/CD/MP3 player on flybridge
- Pioneer external speakers
- Sylvania flat screen TV in salon
- Toshiba VHS/DVD player in salon

---

## 43' Mikelson Electronics

---

- Raymarine E120 chart plotter (2009)
- Raymarine C120 chart plotter
- Raymarine digital HD Radar (2009)
- Icom IC-M59 VHF
- Ritchie Powerdamp Plus magnetic compass
- Simrad Robertson AP11 autopilot
- Raymarine DSM 300 digital color fishfinder/depthsounder (2007)

---

## 43' Mikelson Electrical System

---

- Northern Lights 5 kW genset with 323 hours
- Cole Hersee battery switches
- Trace 1500 watt inverter/charger
- 4 X 8D AGM batteries (2007)
- 1 X 4D AGM battery

---

## 43' Mikelson Engine/Mechanical Equipment

---

Gullwing offers a very economical 11.4 gph at cruise.

- 2 X Caterpillar 3126 420 hp main engines
- ZF RM302V-LD gearboxes

- 
- Kobelt engine controls
  - Groco sea strainers
  - Hynautic hydraulic steering
  - Fuel manifold
  - Racor 900FG fuel filters
  - Tank Tender tank monitor system
  - Cruisair air conditioning system
  - Jabsco fresh water heads
  - Raritan 20 ga water heater
  - Bennett trim tabs
  - Blackwater hoses replaced in 2006
  - New Aquamet 19 shafts, seals and Cutlass bearings (2010)

## **43' Mikelson Deck Equipment**

---

- Muir Cougar 12vdc anchor windlass with foredeck foot switches and flybridge remote switches
- 33lb Bruce anchor with 250' anchor chain
- Spare Danforth anchor
- Spare Fortress FX-37 anchor
- Textalene window and windshield covers

## **43' Mikelson Hull**

---

- Solid fiberglass hull bottom
- Corecell coring in hullsides and decks
- Modified-V design
- Prop pockets
- Reverse chines

- 
- Black trim on house sides repainted with Awlgrip in 2009

## **43' Mikelson Safety & Fire Protection**

---

- Rule bilge pumps
- Kidde Fyre Watch FE241 engine room fire suppression system
- Kidde emergency engine shut down system
- Life jackets
- Fire extinguishers
- Type IV horseshoe type lifering
- New engine room emergency bilge pump with high water alarm installed in 2009

## **43' Mikelson Exclusions**

---

- Seller's personal belongings

## **43' Mikelson Disclaimer**

---

The Company offers the details of this vessel in good faith but cannot guarantee or warrant the accuracy of this information nor warrant the condition of the vessel. A buyer should instruct his agents, or his surveyors, to investigate such details as the buyer desires validated. This vessel is offered subject to prior sale, price change, or withdrawal without notice.

## **Exclusions**

---

Owner's personal belongings.

## **Disclaimer**

---

The Company offers the details of this vessel or yacht in good faith but cannot guarantee or warrant the accuracy of this information nor warrant the condition of the vessel. A buyer should instruct his representatives, agents, or his surveyors, to investigate such details as the buyer desires validated. This vessel or yacht is offered subject to prior sale, price change, or withdrawal without notice.

# PHOTOS

**43' Mikelson port profile photo2**



**43' Mikelson starboard aft profile**



**43' Mikelson aft profile**



**43' Mikelson anchor windlass**



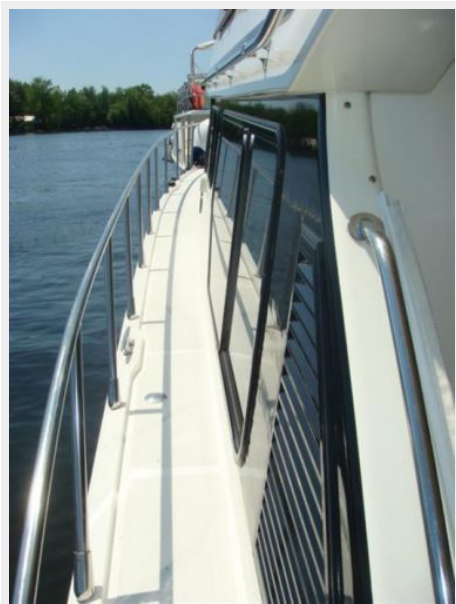
**43' Mikelson foredeck**



**43' Mikelson foredeck aft**



**43' Mikelson port side deck**



**43' Mikelson flybridge forward**



**43' Mikelson flybridge aft**



**43' Mikelson flybridge seating**





**43' Mikelson flybridge aft station**



**43' Mikelson cockpit photo1**



**43' Mikelson cockpit photo2**



**43' Mikelson swimplatform**



**43' Mikelson salon forward**



**43' Mikelson salon aft**



43' Mikelson salon port seating photo1



43' Mikelson salon port seating photo2



43' Mikelson salon starboard aft photo1



43' Mikelson salon starboard aft photo2



43' Mikelson salon dinette photo1



43' Mikelson salon dinette photo2





**43' Mikelson galley photo1**



**43' Mikelson galley photo2**



**43' Mikelson master stateroom**



**43' Mikelson master stateroom forward**



**43' Mikelson guest stateroom**



**43' Mikelson head**





43' Mikelson mid bilge storage compartment



43' Mikelson mid bilge storage compartment port



43' Mikelson mid bilge storage compartment starboard



43' Mikelson mid bilge storage compartment forward



43' Mikelson engine compartment access



43' Mikelson engine compartment starboard



**43' Mikelson port engine compartment**



**43' Mikelson port main engine**



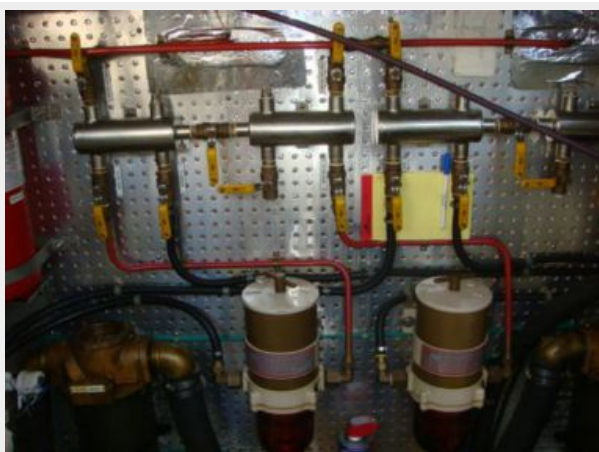
**43' Mikelson starboard engine compartment**



**43' Mikelson starboard main engine**



**43' Mikelson fuel manifold**



**43' Mikelson generator**





**43' Mikelson hauled out photo1**



**43' Mikelson hauled out photo2**



**43' Mikelson hauled out photo3**



**43' Mikelson hauled out photo4**



**43' Mikelson port running gear**



**43' Mikelson starboard running gear**



# CONTACTS

---

Andrey Shestakov, leading yacht broker of the sales department of Shestakov Yacht Sales Inc. Shestakov Yacht Sales Inc., the official representative of the Miami/Fort Lauderdale FL headquarters.

## Contact details

---

Email: [andrey@shestakovyachtsales.com](mailto:andrey@shestakovyachtsales.com)

Web: [shestakovyachtsales.com/en/](http://shestakovyachtsales.com/en/)

## Telephones

---

USA: +1(954)274-4435

## Office hours

---

Monday – Saturday: **9:00 - 21:00** EDT

Sunday: **closed**

## Address

---



Harbour Towne Marina, 850 NE 3rd St,  
STE 213, Dania, FL 33004