

SPIRIT CATCHER — GRAND BANKS



Судостроитель: GRAND BANKS

Год постройки: 1999

Модель: Траулер

Цена: **ЦЕНА ЯХТЫ ПО ЗАПРОСУ**

Местонахождение: United States

Длина общая: 52' 0" (15.85m)

Ширина: 15' 5" (4.70m)

Макс. осадка: 4' 10" (1.47m)

Крейс. скорость: 14 Kts. (16 MPH)

Макс. скорость: 18 Kts. (21 MPH)

Купить Spirit Catcher — GRAND BANKS а также выбрать подходящую вам яхту из нашего каталога яхт вам поможет опытный яхтенный брокер Андрей Шестаков. На сегодняшний день компания Shestakov Yacht Sales Inc. имеет большое количество яхт в собственном списке продаж, а также тесно сотрудничает со всеми крупными яхтенными производителями по всему миру.

Для того чтобы купить яхту Spirit Catcher — GRAND BANKS а также проконсультироваться по любому вопросу связанному с покупкой, продажей, чартером яхт позвоните по телефону **+7(918)465-66-44**.

ОГЛАВЛЕНИЕ

ОГЛАВЛЕНИЕ	2
ХАРАКТЕРИСТИКИ	6
Основная информация	6
Размеры	6
Скорость, вместимость и масса	6
Корпус и палуба	6
Информация о двигателе	6
ПОДРОБНОЕ ОПИСАНИЕ	7
Features of "Spirit Catcher"	7
Mechanical Details	7
Saloon	7
Galley	8
Pilothouse	8
Accommodations	9
Flybridge and Boat Deck	10
Main Deck, Cockpit & Lazarette	11
Electronic and Navigation Systems	12
Electrical Systems	12
Mechanical, Heat, and Plumbing	13
Исключения	14
Отказ от ответственности	14
ФОТОГРАФИИ	15
"Spirit Catcher"	15
Grand Banks 52 Europa- Starboard	15
Saloon sliding doors and FB stairs	15
Saloon sliding doors	15
Saloon looking forward	16
Saloon looking forward to port	16

Chelsea clock and barometer	16
Saloon looking aft to starboard	16
Galley	16
Saloon looking aft	16
Galley	17
Galley with drop down storage	17
Miele oven and controls for cooktop	17
Galley stainless steel sink	17
Dining area looking aft	17
Dining area looking forward	17
Curved stairs running aft to Master	18
Pilothouse helm	18
Master Stateroom centerline queen	18
Master Stateroom	18
Master Stateroom- Ensuite head	18
Master Stateroom lookin forward to port	18
Master Stateroom- Shower	19
Companion way looking forward	19
Vee Berth- Looking aft to starboard	19
Vee Berth- Looking forward	19
VIP Stateroom #2	20
VIP Stateroom #1	20
Guest head- Shower	20
Guest head	20
Port side boarding gate	20
Aft deck	20
Bow pulpit with both anchors	21
Bow pulpit	21
Bow pulpit	21

Bow	21
Port side looking aft	22
Starboard view	22
Port side deck	22
Port side deck	22
port side deck	23
Bow looking aft	23
Port side deck with overhangs	23
Aft deck	23
Aft deck	23
Stainless steel hause and cleats	23
Cockpit BBQ	24
Cockpit shower	24
Starboard side deck	24
Boat deck coming up from cockpit	24
Flybridge helm with Stidd chair	24
Flybridge helm station	24
Flybridge L-shaped settee	25
Spot light	25
Flybridge-Refrigerator/freezer	25
Flybridge-Refrigerator/freezer	25
Flybridge- looking aft twords tender	25
Flybridge- looking aft twords tender	25
Flybridge- Brower Davit	26
Novarania- Tender	26
Novarania- Tender	26
Novarania- Tender	26
Novarania- Tender	26
Novarania- Tender	26

Electrical distribution	27
Engine room	27
Engine room	27
Engine room	27
Engine room	27
Engine room	27
Engine room	27
КОНТАКТЫ	29
Контактная информация	29
Телефоны	29
Время работы	29
Адрес	29

ХАРАКТЕРИСТИКИ

Основная информация

Тип судна: Траулер

Модельный год: 1999

Год постройки: 1999

Страна: United States

Размеры

Длина общая: 52' 0" (15.85m)

Длина по ватерлинии: 51' 9" (15.77m)

Длина палубы: 53' 6" (16.31m)

Ширина: 15' 5" (4.70m)

Макс. осадка: 4' 10" (1.47m)

Длина привального бруса: 59' 8"
(18.19m)

Скорость, вместимость и масса

Крейс. скорость: 14 Kts. (16 MPH)

Макс. скорость: 18 Kts. (21 MPH)

Водоизмещение: 58000 Pounds

Вместимость воды: 300 Gallons

Вместимость сточного бака: 120 Gallons Объем топливного бака: 1200 Gallons

Корпус и палуба

Материал корпуса: Fiberglass

Информация о двигателе

Двигатели: 2

Производитель: Caterpillar

Модель: 3196TA

Тип двигателя: Inboard

Тип топлива: Diesel

ПОДРОБНОЕ ОПИСАНИЕ

Features of "Spirit Catcher"

"Spirit Catcher" encompasses the details that yachtsmen require to fulfill their cruising experience. She can cruise locally with the yacht club in style as well as take you from Alaska to Mexico with one of the best known brands of yachts, Grand Banks.

The saloon, galley and dining areas are on one level and allow open unobstructed visibility throughout. The window line is low enough so one can see the water while seated in the saloon. This is a warm and inviting yacht that provides the owners and guests with terrific living and entertaining spaces as well as a very private master stateroom with ensuite head.

Mechanical Details

The engine room of "Spirit Catcher" is, in a word, amazing. Full stand up headroom with plenty of light for routine maintenance. There is access to all systems.

Port Engine: Engine Brand: Caterpillar
Engine Model: 3196TA Engine HP: 660HP
Engine Type: Inboard Fuel Type: Diesel
Engine Hours 1689 Transmission: Twin Disk-
MG5091 Drive Type: Direct- Aqua Drive units

Starboard Engine: Engine Brand: Caterpillar
Engine Model: 3196TA Engine HP: 660HP
Engine Type: Inboard Fuel Type: Diesel Engine
Hours 1694 Transmission: Twin Disc-MG5091
Drive Type: Direct-Aqua Drive units

The larger of the two generators is located in the engine room. The 8kW is located in the lazarette.

Main Generator: Generator Brand: Northern
Lights Generator Output: 20kW Engine Model:
Lugger Engine HP: 32HP Fuel Type: Diesel
Engine Hours: 1411

Aft Generator: Generator Brand: Northern
Lights Generator Output: 8KW Engine Model:
Lugger Engine HP: 13.5hp Fuel Type: Diesel
Engine Hours: 661

Saloon

Walking forward from the spacious aft deck you effortlessly walk right into the Saloon when the

sliding doors open up and stack to starboard. To starboard just inside is a nicely appointed settee with teak coffee table. Across is the entertainment system with plenty of storage.

- Large 5 cushion settee- finished in Beige Ultraleather
- Two barrel chairs with speed storage inside
- Icemaker
- Flat screenTV
- AiwaStereo system with speakers throughout vessel
- Sony Music Disc player
- JVA- DVD & Video tape player
- ALL THE ABOVE BUILT-INS
- Chelsea clock and Chelsea barometer
- Marine Air- Control and unit
- Nutone- Central Vacuum outlet
- Halogen overhead lights on dimmers
- Accent lights above windows
- Three nautical lamps
- U-line Ice makerunder lamp table
- Storage under all settee cushions
- Hi-Lo coffee table with expandable leaves

Galley

The Galley runs fore and aft on the port side of the Saloon aft of the lower control station with dinette to starboard. The expansive countertops give ample room for preparation for gourmet meals or simple snacks. There is plenty of storage so that everything can have its place.

- Overheaddrop down cabinets
- Tableware, dishes, utensils included
- Small pantry under glass holder area
- Miele- KM124 220V glass cooktop with four burners
- Miele- H214- 220Vwall oven
- GE-Microwave
- Corian tops on both counters
- Large stainless sink with KWC faucet
- Grunert- Large holding plate refrigerator
- Round teak kitchen table (4 chairs)
- Accent lights above windows
- Halogen lights above all areas
- Slide out garbage drawer with teak face
- Spacious Dish and tableware stowage

Pilothouse

Just forward of the galley and dining table, the Pilothouse station is designed so that the captain

can take command of all systems at the helm but still entertain and enjoy friends and guests while underway. Features include:

- Pilothouse doors P/S open onto side decks
- Stidd High Back Slimline Admiral helm seat
- Traditional GB Teak and SS wheel
- Boat Leveler- Trim tab control
- Bow thruster control
- Aiphone intercom
- ITT Jabsco searchlight controls
- Wema- Fuel level gauges
- VDO Rudder angle indicator
- Glendenning engine controls
- Glendinning synchronizer
- Windlass Panel with up/dn
- Ritchie compass
- Pantograph windshield wiper controls
- Very quiet at cruise
- FCI-Watermaker controls
- Marine Air control
- 12VDC & 120VAC outlets
- Serial data port

Accommodations

Master Stateroom:

The enormous private Master Stateroom is accessed by sweeping curved stairwell to starboard between the Saloon and Dining area. The stateroom featuring the center line queen berth, extensive lockers, drawers, and hanging lockers and a generous ensuite head with separate shower stall. There is a pass-through to the laundry facilities located in the Lazarette.

- Queen walk-around bed
- Handcrafted Mattress Co.- Mattress
- Multiple drawers and hanging wardrobe
- Halogen overhead lights
- Pass through for laundry to washing machine
- Weather fax - Furuno #207
- Two chart drawers under berth
- Accent Lights
- Book holders starboard and port sides
- Brass reading lights
- Escape hatch to saloon
- Nutone- Central Vacuum outlet

Ensuite Head:

- VacuFlush-Fresh water toilet
- Tank watch 4
- Entry built-in cabinets above sink
- Halogen lights above mirror
- Folding shower door and curtain
- Stainless steel hooks throughout

Guest Cabins:

The companionway leads down from the Galley/Pilothouse down 6 steps to the guest accommodations. There is a guest stateroom with Vee berth forward with a VIP stateroom aft and to starboard. This area also closes off from the pilothouse aft to form a large private guest suite. A large guest head is to port with separate shower stall.

Two forward staterooms:

- V-berth with room 2 people
- VIP to Starboard has queen size berth
- Multiple drawers and hanging wardrobe in both staterooms
- Halogen overhead lights
- Two brass reading lights in each staterooms
- Book shelves in both staterooms
- Large storage space under V-berth
- Lewmar hatches in both staterooms and head
- Nutone- Central Vacuum outlet

- Accent lights over windlass both staterooms
- ladder for emergency escape

Guest Head:

- Vaccuflush fresh water system
- Tank watch #4
- Corian counter tops
- Multiple storage drawers and under sink
- Shower special Corian folding doors instead of shower curtain
- Separate water heater for this head

Flybridge and Boat Deck

The Fly Bridge is spacious and exceptionally comfortable, with excellent running visibility from the Stidd helm seat. There is a custom SS arch, providing a base for the ship's antennas. Aft of the arch extends an additional canvas Bimini, self supporting to the arch, and forward is a large Bimini enclosure. Note the following features/options:

- Centerline Helm with comprehensive electronics
- Stidd Slimline helmchair with chrome package
- L-shaped settee with teak table
- Seating for 12
- Grunertrefrigerator/freezer under settee (Grunert holding plate system)
- Hi-Low Expandable teak table
- Storage under all seats
- Courtesy lighting
- Stainless Steel arch
- Grunert Top load freezer
- Grunert Refrigerator
- (2) Pompanette- Storage boxes
- Barrett bimini top with enclosure and sliding panels facing aft
- Barrett Aft bimini top
- Teak decks
- (2) Stainless fender holders- Holds 6 fenders

Boat Deck:

- Novorania tender- 360DL RIB with center console LOA- 11'10" Beam- 5'6"
- Yamaha 40hp (4 stroke)

Main Deck, Cockpit & Lazarette

The Cockpit is spacious and intimate to the ocean around, and, like all outside spaces on the Europa, it is safe and secure with teak decks and stainless steel rails. The teak caprail, clear of any fittings, is broad and magnificent with multiple coats of fresh varnish - perfectly maintained. The cockpit is accessed by the wide teak swim grid with swim ladder on center, There are side gates for ease of boarding or stepping to the dock to secure mooring lines. Further features:

Main Deck:

- Raised Anchor pulpit accommodates two anchors
- Lofrans- Falkon 12 volt windlass
- 300' Chain marked every 25'
- CQR- Anchor 60lb.
- Hose coil - chain washdown hose
- Danforth- Lunch hook anchor with chain and rode
- Outside Europa deck light

Cockpit:

- Large teak swimstep
- Swim ladder with extension
- Overboard life sling
- Magma- Stainless steelBBQ
- Outside underwater swim light
- Cockpit salt water washdown
- Magma- Fish cleaning table
- Outside deck shower

Lazarette:

- Seaward waterheater for master stateroom
- Northern lights Gen 8kw
- Heart Interface inverter
- 120VAC Florescent lights
- 12VDC lighting
- FCI-Watermaker
- Frigidaire full size Washer and Dryer
- Water tank - 300 gals
- Boat leveler system

Electronic and Navigation Systems

The Nav Systems and Electronics were chosen and laid out for ease of use and dependable operation. Quality components and latest available models were chosen at time of installation. Care was taken so that Pilothouse and Fly Bridge station are complimentary and have a logical layout of screens and controls.

Pilothouse:

- Stidd adjustable captains chair
- Northstar 962 Plotter
- Furuno 48 mile radar
- Windlass control
- Bow thruster control
- Caterpillar engine gauges
- Ritchie compass
- Glendenning engine controls
- Robertson AP300 Autopilot control
- ICOM VHF marine radio with remote microphone
- Furuno RD30 Instrument repeater
- WEMA- Fuel gauges
- VDO- Rudder angleindicator

Upper Helm:

- Northstar 962 plotter repeater
- Furuno radar
- Furuno depth sounder and fishfinder
- Bow thruster control
- Glendinning electronic engine controls
- Naiad stabilizer control
- Cat engine gauges
- Robertson AP300Autopilot Control
- Jabsco Search light Control
- ICOM VHF Marine radio
- Intercom
- Sony Stereo
- Stidd Helm seat
- Horn pump
- All canvas by Barrett sling windows- all bearing stainless support system

Electrical Systems

The Grand Banks Electrical system is known to be a robust design, complex in layout but remarkably friendly to use.

- Grand Banks electrical distribution panel
- Northern Lights 20 kW genset w/ remote start/gauge panel in engine room
- Northern Lights 8 kW genset with remote start/gauge panel in Laz.
- (2) Genset start batteries
- Heart interface- Freedom 2 500 watt inverter/charger
- Link 2000 interface
- (8) inverter batteries
- (2) Professional Mariner- Promatic 50-3 12vDC battery chargers
- (2) Main engine start batteries
- (3) House batteries
- Shorepower/cable connections fore and aft
- 50 amp 125/250 shore power cord
- TV/Phone connection at bow
- Compton AC voltmeter/Ammeter
- Zinc Saver II galvanic isolator
- 12VDC High output alternators- One on each engine
- Grand Banks windlass control panel
- Nutone central vacuum system

Mechanical, Heat, and Plumbing

Mechanical:

Caterpillar electronic controlled diesel engines, fresh water cooled through heat exchangers with AIRSEP air filters. The engines have been professionally serviced and maintained by YachtCare of Seattle on an annual basis. There are only 1689 hours on each. The Mechanical systems include the following:

- (2) Caterpillar 3196TA (660 HP)
- Centek- Waterlock exhaustmufflers
- Racor dual filter units foreach engine
- Parker- Engine driven- Hydraulic pump
- Naiad Stabilizers
- Wesmar Hydraulic Bow Thruster
- Glendenning engine controls with manual cable backup.
- Boat Leveler- Trim tab
- Norscot- Shaft seal
- Aquadrive- Shaft coupling system
- Aquamet 22- Stainless Steel shafts
- (2) Steel fuel tanks with center distribution tank

- Teleflex- Hydraulic steering

Heating and Air-conditioning:

Marine Air- Reverse Cycle Air conditioning system throughout vessel with controls in each living area.

Air conditioning locations

- Guest and VIP stateroom A/C unit under vee berth-compressor in bilge
- Saloon forward-A/C unit on flybridge
- Saloon Aft-A/C unit under stairs
- Master cabin-A/C unit on port

Plumbing:

- Fresh water tank- 300 Gallons
- (2) Paragon senior- Fresh water pumps
- Groco- F/W accumulator tank
- (2) Seaward- F/W Heaters
- Vaccuflush- Vacuum flush system
- Sealand- Macerator pumps
- (2) Holding tanks
- Tank watcher 4- Holding tank indicator
- Whale gusher- Manual bilge pump

Исключения

При продаже яхты исключаются личные вещи владельца.

Отказ от ответственности

Компания предоставляет описание судна или яхты добросовестно, но не может гарантировать точность этой информации, а также не ручается за техническое состояние. Покупатель должен проинструктировать своих агентов или оценщиков исследовать представленную информацию более подробно, по собственному желанию. Продажа судна или яхты, изменение цены или снятие с продажи будет происходить без предварительного уведомления.

ФОТОГРАФИИ



Grand Banks 52 Europa- Starboard



"Spirit Catcher"



Saloon sliding doors



Saloon sliding doors and FB stairs



Saloon looking forward



Saloon looking forward to port



Chelsea clock and barometer



Saloon looking aft to starboard



Saloon looking aft



Galley



Galley



Galley with drop down storage



Galley stainless steel sink



Miele oven and controls for cooktop



Dining area looking aft



Dining area looking forward



Pilothouse helm



Curved stairs running aft to Master



Master Stateroom centerline queen



Master Stateroom



Master Stateroom lookin forward to port



Master Stateroom- Ensuite head



Master Stateroom- Shower



Companion way looking forward



Vee Berth- Looking aft to starboard



Vee Berth- Looking forward



VIP Stateroom #1



VIP Stateroom #2



Guest head



Guest head- Shower



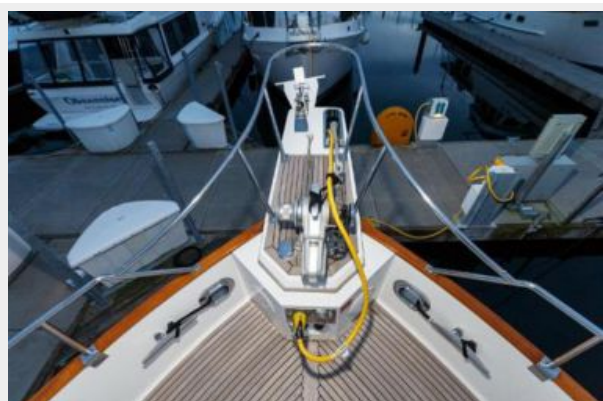
Port side boarding gate



Aft deck



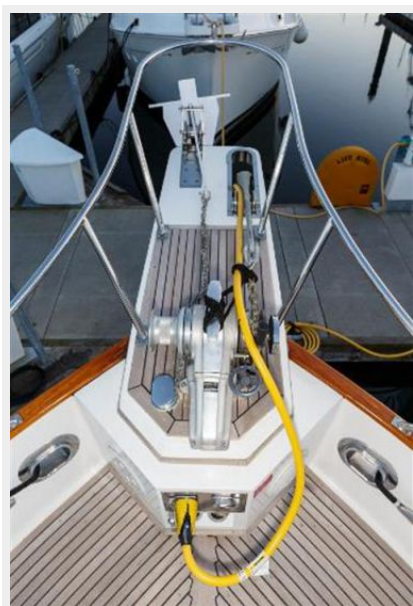
Bow pulpit



Bow pulpit with both anchors



Bow pulpit



Bow



Starboard view



Port side looking aft



Port side deck



Port side deck



port side deck



Bow looking aft



Port side deck with overhangs



Aft deck



Aft deck



Stainless steel house and cleats



Cockpit shower



Cockpit BBQ



Starboard side deck



Boat deck coming up from cockpit



Flybridge helm station



Flybridge helm with Stidd chair



Flybridge L-shaped settee



Spot light



Flybridge-Refrigerator/freezer



Flybridge-Refrigerator/freezer



Flybridge- looking aft towards tender



Flybridge- looking aft towards tender



Flybridge- Brower Davit



Novarania- Tender



Novarania- Tender



Novarania- Tender



Novarania- Tender



Novarania- Tender



Electrical distribution



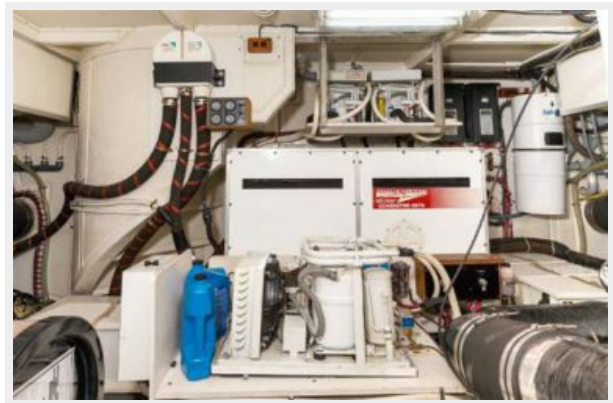
Engine room



Engine room



Engine room



Engine room



Engine room





КОНТАКТЫ

Андрей Шестаков (Andrey Shestakov) – ведущий яхтенный брокер отдела продаж яхт и судов компании Shestakov Yacht Sales Inc. Официальный представитель Shestakov Yacht Sales Inc. для русскоговорящих клиентов в центральном офисе компании в Майами/Форт Лодердейл/Флорида/США.

Контактная информация

Email: andrey@shestakovyachtsales.com

Web: shestakovyachtsales.com

Телефоны

Краснодарский край: **+7(918)465-66-44**

США, Майами, Флорида: **+1(954)274-4435**

Время работы

Понедельник – Суббота: **9:00 - 21:00**
EDT

Воскресенье: **Закрито**

Адрес



Harbour Towne Marina, 850 NE 3rd St,
STE 213, Dania, FL 33004