

# 39FT 1989 SEA RAY 390 EXPRESS CRUISER — SEA RAY



**Builder:** [SEA RAY](#)

**Year Built:** 1989

**Model:** Motor Yacht

**Price:** PRICE ON APPLICATION

**Location:** United States

**LOA:** 39' 0" (11.89m)

**Beam:** 13' 11" (4.24m)

**Max Draft:** 2' 4" (0.71m)

**Cruise Speed:** 18 Kts. (21 MPH)

**Max Speed:** 27 Kts. (31 MPH)

Our experienced yacht broker, Andrey Shestakov, will help you choose and buy a yacht that best suits your needs 39ft 1989 Sea Ray 390 Express Cruiser — SEA RAY from our catalogue. Presently, at Shestakov Yacht Sales Inc., we have a wide variety of yachts available on our sale's list. We also work in close contact with all the big yacht manufacturers from all over the world.

If you would like to buy a yacht 39ft 1989 Sea Ray 390 Express Cruiser — SEA RAY or would like help answering any questions concerning purchasing, selling or chartering a yacht, please call **+1(954)274-4435**

---

# TABLE OF CONTENTS

---

TABLE OF CONTENTS	2
SPECIFICATIONS	3
Basic Information	3
Dimensions	3
Speed, Capacities and Weight	3
Accommodations	3
Hull and Deck Information	3
Engine Information	4
DETAILED INFORMATION	5
Accommodations	5
Additional Information	5
Exclusions	6
Disclaimer	6
PHOTOS	7
CONTACTS	18
Contact details	18
Telephones	18
Office hours	18
Address	18

---

# SPECIFICATIONS

---

## Basic Information

---

**Category:** Motor Yacht

**Model Year:** 1989

**Year Built:** 1989

**Country:** United States

## Dimensions

---

**LOA:** 39' 0" (11.89m)

**Beam:** 13' 11" (4.24m)

**Max Draft:** 2' 4" (0.71m)

## Speed, Capacities and Weight

---

**Cruise Speed:** 18 Kts. (21 MPH)

**Max Speed:** 27 Kts. (31 MPH)

**Displacement:** 16400 Pounds

**Water Capacity:** 100 Gallons

**Holding Tank:** 40 Gallons

**Fuel Capacity:** 300 Gallons

## Accommodations

---

**Total Cabins:** 2

**Total Berths:** 3

**Total Heads:** 1

## Hull and Deck Information

---

**Hull Material:** Fiberglass

---

## Engine Information

---

**Engines:** 2

**Manufacturer:** Mercruiser

**Model:** MPI EFI

**Engine Type:** Inboard

**Fuel Type:** Gas/Petrol

---

# DETAILED INFORMATION

---

## Accommodations

---

### Salon

- Expansive salon
- Sleeping accommodations for 6 (total)
- Private twin bunk beds (separated by retractable bulkhead)
- Vacu-flush head with stand up shower
- Plenty of room for storage and supplies

### Galley

- Two-burner electric stove top
- Double stainless steel sink
- Microwave oven
- Coffee maker
- Large upright Norcold refrigerator/freezer
- Large wraparound couch with dining table

### Master Stateroom

- Large master stateroom forward
- Queen island berth
- Vanity sink
- Mirrored cabinet
- Hang up cedar closet
- Flat screen TV

---

## Additional Information

---

- 2 AC units - one in the salon and one in the master berth
- Both AC units are controlled with digital thermostat
- Cockpit seats 12 comfortably
- Double wide helm seat
- Double wide passenger seat on port side
- Cockpit is carpeted
- Ice Maker in cockpit
- Handheld shower in cockpit
- Cockpit is covered with a retractable bimini
- Curtain separates front and rear sections of the cockpit
- Highly finished teak is custom covered from port to starboard

- She is fully non-skid coated from the gunnel walkways to the entire bow
- Custom full length 4 inch sun pad
- All hatches are custom covered
- 2 large covered fenders on each side
- High beam two phase remote controlled spotlight
- Automatic windless is ALL-CHAIN and has foot control on bow
- Windless and spotlight are both custom covered

### Entertainment Center

- Sony marine stereo receiver
- CD player
- DVD player
- VHS player
- 2 in-ceiling Sony stereo speakers
- Sony remote control unit at the helm station
- 32" flat screen TV
- 2 PYLE 300W 6x9 inch marine stereo speakers in cockpit

### Electronics

- Upgraded
- 2 GPS units
- 12" Garmin with G-2 vision card
- G-2 Google Earth vision card to give you the ultimate in GPS technology
- Lowrance Global Map unit
- ComNav 1420 autopilot
- Large screen backup camera
- Remote control for stereo system
- 4 Interstate batteries- 2 starter and 2 deep cycle
- New Pro-Tech smart charger
- 400W power inverter provides AC when needed

---

## Exclusions

Owner's personal belongings.

---

## Disclaimer

The Company offers the details of this vessel or yacht in good faith but cannot guarantee or warrant the accuracy of this information nor warrant the condition of the vessel. A buyer should instruct his representatives, agents, or his surveyors, to investigate such details as the buyer desires validated. This vessel or yacht is offered subject to prior sale, price change, or withdrawal without notice.

# PHOTOS

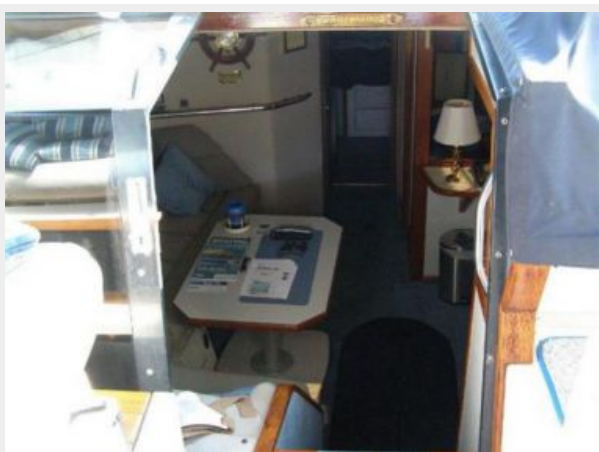










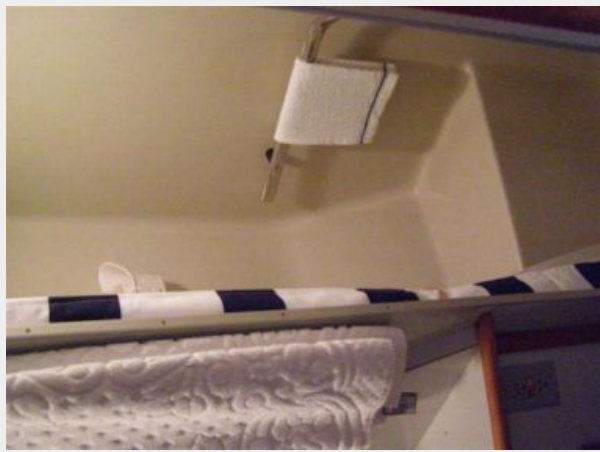












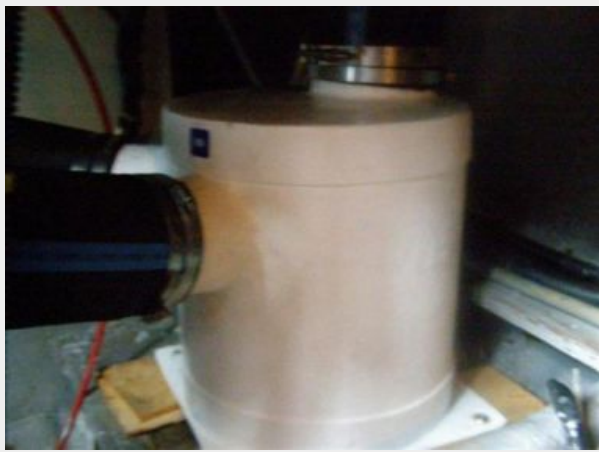












# CONTACTS

---

Andrey Shestakov, leading yacht broker of the sales department of Shestakov Yacht Sales Inc. Shestakov Yacht Sales Inc., the official representative of the Miami/Fort Lauderdale FL headquarters.

## Contact details

---

Email: [andrey@shestakovyachtsales.com](mailto:andrey@shestakovyachtsales.com)

Web: [shestakovyachtsales.com/en/](http://shestakovyachtsales.com/en/)

## Telephones

---

USA: +1(954)274-4435

## Office hours

---

Monday – Saturday: **9:00 - 21:00** EDT

Sunday: **closed**

## Address

---



Harbour Towne Marina, 850 NE 3rd St,  
STE 213, Dania, FL 33004