

WIGHT STAR — NIMBUS



Builder: NIMBUS

Year Built: 1994

Model: Motor Yacht

Price: PRICE ON APPLICATION

Location: United Kingdom

LOA: 36' 8" (11.18m)

Beam: 11' 9" (3.58m)

Min Draft: 3' 3" (0.99m)

Our experienced yacht broker, Andrey Shestakov, will help you choose and buy a yacht that best suits your needs **WIGHT STAR — NIMBUS** from our catalogue. Presently, at Shestakov Yacht Sales Inc., we have a wide variety of yachts available on our sale's list. We also work in close contact with all the big yacht manufacturers from all over the world.

If you would like to buy a yacht **WIGHT STAR — NIMBUS** or would like help answering any questions concerning purchasing, selling or chartering a yacht, please call **+1(954)274-4435**

TABLE OF CONTENTS

TABLE OF CONTENTS	2
SPECIFICATIONS	4
Overview	4
Basic Information	4
Dimensions	4
Speed, Capacities and Weight	4
Accommodations	4
Hull and Deck Information	5
Engine Information	5
DETAILED INFORMATION	6
Broker's Comments	6
Owner's Comments	6
Construction	6
Machinery	7
Electrical Systems	7
Plumbing Systems	8
Tankage	8
Navigation Equipment	8
Domestic Equipment	9
Accommodation	9
Deck Equipment	10
Exclusions	11
Disclaimer	11
PHOTOS	12
CONTACTS	15
Contact details	15
Telephones	15
Office hours	15

Address

15

SPECIFICATIONS

Overview

This 1994 Nimbus 37 Trawler, from the drawing board of Sweden's Rolf Eliasson, has six berths and a very clever and versatile layout. With shaft drive Volvo Tenta 200HP diesel, bowthruster and a practical flybridge, this Nimbus is very well-presented and benefits from a recent survey.

Basic Information

Category: Motor Yacht

Sub Category: Semi-Displacement

Model Year: 1994

Year Built: 1994

Country: United Kingdom

Dimensions

LOA: 36' 8" (11.18m)

Beam: 11' 9" (3.58m)

Min Draft: 3' 3" (0.99m)

Speed, Capacities and Weight

Displacement: 14991.433816 Pounds

Water Capacity: 113.59398236 Gallons

Fuel Capacity: 199.44989926 Gallons

Accommodations

Total Cabins: 2

Total Berths: 6

Total Heads: 1

Hull and Deck Information

Hull Material: GRP

Deck Material: GRP

Hull Configuration: Semi-Displacement

Hull Designer: Rolf Eliasson

Engine Information

Engines: 2

Manufacturer: Volvo Penta

Model: TAMD 41

Engine Type: Inboard

Fuel Type: Diesel

DETAILED INFORMATION

Broker's Comments

The 37 (latterly the 370 Coupe) is a very cleverly-construed cruiser - allowing a decent aft cockpit (with good engine access below) a safe fly-bridge, side-deck access doors and well thought-out accommodation for practical motor-boating. The saloon is laid out aft – opposite the large U-shaped galley – with immediate access into the aft deck, and the build quality is reliable, Scandinavian and built to last.

There is a late 2013 survey available on this vessel – she is well-presented by an experienced owners and views very well.

Owner's Comments

Following an incident in 2012 involving water ingress into the engine room, that was the subject of an insurance claim, the owners took the opportunity to re-furbish the yacht and ancillary equipment, including new engine blocks, re-conditioning of both engines and gearboxes, shafts, rudder tubes, propellers, cutlass bearings, new bow thruster, heating and hot water system, autopilot, fridge, water pumps, fire extinguisher and cathodic protection..

WIGHT STAR has had two owners from new and is now offered for sale due to the owner's need to downsize to a small vessel.

Construction

RCD Status: Our understanding is that the yacht is exempt from the essential safety requirements of Directive 94/25EC (Recreational Craft Directive) as she was built and placed into use within the EU prior to 1998.

Hull, Deck & Superstructure Construction:

- White GRP hull, decks and superstructure
- Blue/black painted boot-tops.

Machinery

Engine & Gearboxes:

- 2 x Volvo Penta TAMD 41 diesel engines 200hp.
- Vee drive gearboxes on shafts.

Maintenance & Performance:

- Engine Hours: c. 590 & 580.

Propulsion & Steering:

- Bow thruster.
- Rope cutters on props.

Electrical Systems

Voltage Systems:

- 12V ships system.

Battery Banks:

- 6 x 12V batteries.

Battery Chargers:

- Battery charger.

Alternators:

- Volvo Penta.

Shore Power:

- Shorepower.

Plumbing Systems

Fresh Water & Water Heating System:

- Pressurized hot and cold water system.
- Water heating by calorifier and 240V immersion.

Bilge Pumps:

- Two electric and one manual bilge pump.

Tankage

Fuel:

- Total capacity of 755 litres.

Fresh water:

- Total capacity of 430 litres.

Grey/Blackwater holding tanks:

- Blackwater tank fitted.
- Manual diaphragm holding tank pump-out.

Navigation Equipment

- Furuno GPS navigator.
- Icom IC-M505 VHF.
- Raymarine P70 autopilot.
- Raymarine radar.

- Autohelm ST50 speed/depth.
- Raymarine RL70C Navchart plotters.
- Clock and barometer.

Domestic Equipment

Galley:

- Isotherm Cruise 130 marine fridge.
- Parker gas stove and oven.

Heads/Showers:

- Manual PAR ITT marine wc, hand-basin with hot/cold mixer tap and shower.

Heating & Ventilation:

- Eberspacher airtronic D4 heating.

Lighting:

- 12V lighting throughout.

Accommodation

Summary of Accommodation:

- Vee berth forward.
- Double midships.
- Main saloon.
- Optional double.

Description of layout from forwards:

Separate forward cabin with vee-berth, shelving to both cabin sides, opening hull and deck-lights and trimmed in alcantara with cherry stripped timber lining. Heads aft to starboard with shower stall forward and heads facing inboard with handbasin set aft. Guest cabin to port with transverse double berth and hanging locker, with opening port-light. Stairs up to lower helm, with main helm console to starboard and navigators area to port, stairs down aft to the saloon and galley area. U-shaped sofa and table to port, with a U-shaped galley worktop to starboard, tankage under the sole, sliding windows to each side and sliding aft glazed doors to access aft cockpit. Galley has plentiful storage (drawers and lockers), with a tight six people fitting around the saloon table.

Deck Equipment

General:

- Twin side deck access doors from lower helm.
- Stainless steel guardrails and radar gantry.

Anchoring & Mooring Equipment:

- Electric anchor winch.
- 33lb Bruce anchor and chain.
- Three sets of cleats to each side.

Covers, Canvas & Cushions:

- Aft cockpit awning.
- Upper deck cover as per photo.

Tender & Outboard:

- Wetline inflatable dinghy with snap davits.

Safety equipment:

- Horseshoe lifebuoy and light.

Fire-fighting equipment:

- Fireblitz automatic engine room extinguisher.
- 2 dry powder manual fire extinguishers.
- Galley fire blanket.

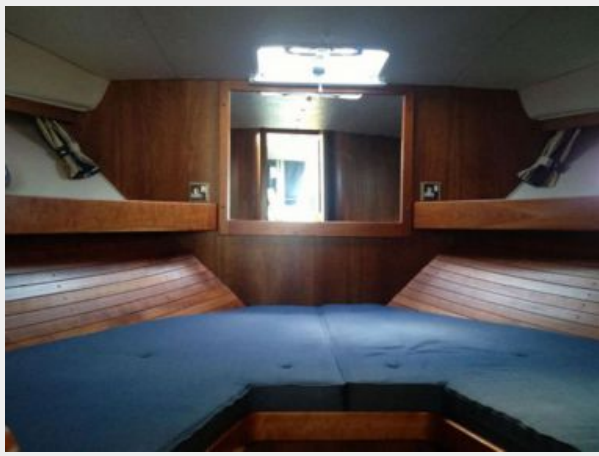
Exclusions

Owner's personal belongings.

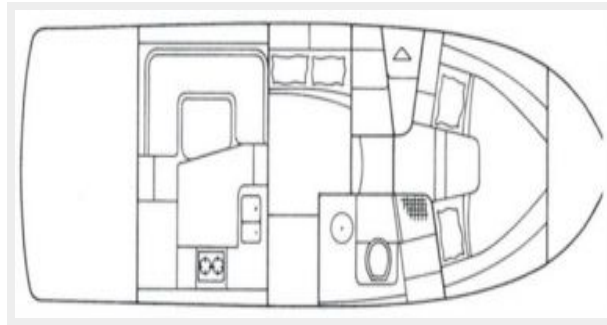
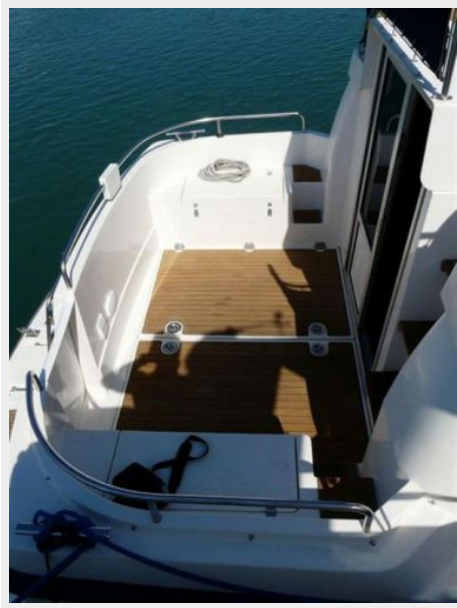
Disclaimer

The Company offers the details of this vessel or yacht in good faith but cannot guarantee or warrant the accuracy of this information nor warrant the condition of the vessel. A buyer should instruct his representatives, agents, or his surveyors, to investigate such details as the buyer desires validated. This vessel or yacht is offered subject to prior sale, price change, or withdrawal without notice.

PHOTOS







CONTACTS

Andrey Shestakov, leading yacht broker of the sales department of Shestakov Yacht Sales Inc. Shestakov Yacht Sales Inc., the official representative of the Miami/Fort Lauderdale FL headquarters.

Contact details

Email: andrey@shestakovyachtsales.com

Web: shestakovyachtsales.com/en/

Telephones

USA: +1(954)274-4435

Office hours

Monday – Saturday: **9:00 - 21:00** EDT

Sunday: **closed**

Address



Harbour Towne Marina, 850 NE 3rd St,
STE 213, Dania, FL 33004