

# CREOLA



**Year Built:** 1990

**Model:** Cruising/Racing Sailboat

**Price:** PRICE ON APPLICATION

**LOA:** 37' (11.28m)

**Beam:** 12.58

**Max Draft:** 5' 11" (1.8m)

Our experienced yacht broker, Andrey Shestakov, will help you choose and buy a yacht that best suits your needs **CREOLA** — n/a from our catalogue. Presently, at Shestakov Yacht Sales Inc., we have a wide variety of yachts available on our sale's list. We also work in close contact with all the big yacht manufacturers from all over the world.

If you would like to buy a yacht **CREOLA** — n/a or would like help answering any questions concerning purchasing, selling or chartering a yacht, please call **+1(954)274-4435**

# TABLE OF CONTENTS

TABLE OF CONTENTS	2
SPECIFICATIONS	4
Basic Information	4
Dimensions	4
Speed, Capacities and Weight	4
Accommodations	4
Hull and Deck Information	4
Engine Information	5
PHOTOS	6
"Creola" in her slip	6
54" Destroyer Steering Wheel	6
Traveler	6
#35 Barient 2-Speed Winches	6
10 Line Clutches	6
Cockpit Companionway	6
Anchor Well	7
Swim ladder and transom Step up	7
Forward "V" sleeps two crew members comfortably	7
Aft cabin & Chart station	7
Pipe Berth Starboard Side	8
Pipe berths starboard & Port	8
Portside Berth	8
Pilot Berth Starboard Side	8
Teak & Holly in beautiful condition	8
Looking Aft	8
Aft of Galley	9
Looking aft port side	9
Head Sink	9

---

Manual marine toilet	9
Head	10
3-Burner Propane Stove	10
Loads of storage	10
Refrigerated Icebox & freezer	10
Fresh water foot pump	10
Yanmar (Portside view) Easy Access	10
35 HP Yanmar	11
Ray Marine piston driven Auto-Pilot	11
Cockpit Ignition	11
Wind, Speed & Radio Repeaters	11
Electrical Panel/Nav Station	11
Cockpit	11
CONTACTS	12
Contact details	12
Telephones	12
Office hours	12
Address	12

---

# SPECIFICATIONS

---

## Basic Information

---

**Category:** Cruising/Racing Sailboat

**Sub Category:** Racing Sailboat

**Model Year:** 1990

**Year Built:** 1990

## Dimensions

---

**LOA:** 37' (11.28mm)

**LWL:** 31' 10" (9.7mm)

**Beam:** 12.58

**Max Draft:** 5' 11" (1.8mm)

## Speed, Capacities and Weight

---

**Water Capacity:** 60 Gallons

**Holding Tank:** 11 Gal Gallons

**Fuel Capacity:** 22 Gal Gallons

## Accommodations

---

**Total Cabins:** 2

**Total Berths:** 7

**Sleeps:** 9

**Total Heads:** 1

## Hull and Deck Information

---

**Hull Material:** Fiberglass

**Deck Material:** Fiberglass

**Hull Configuration:** Other

**Hull Color:** WHITE

**Hull Designer:** ROB BALL

---

## Engine Information

---

**Engines:** 1

**Manufacturer:** Yanmar

**Engine Type:** Inboard

**Fuel Type:** Diesel

# PHOTOS

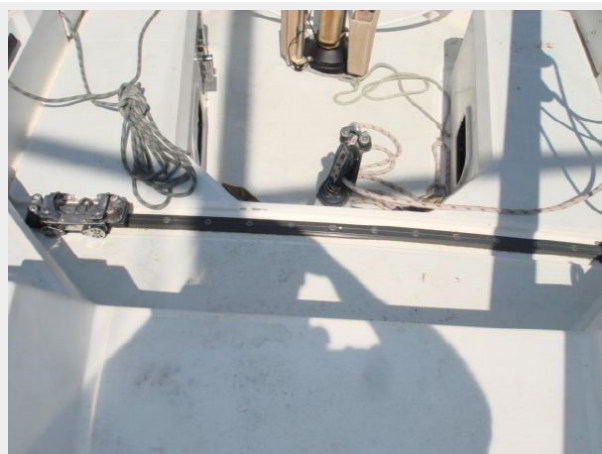
**"Creola" in her slip**



**54" Destroyer Steering Wheel**



**Traveler**



**#35 Barient 2-Speed Winches**



**10 Line Clutches**



**Cockpit Companionway**





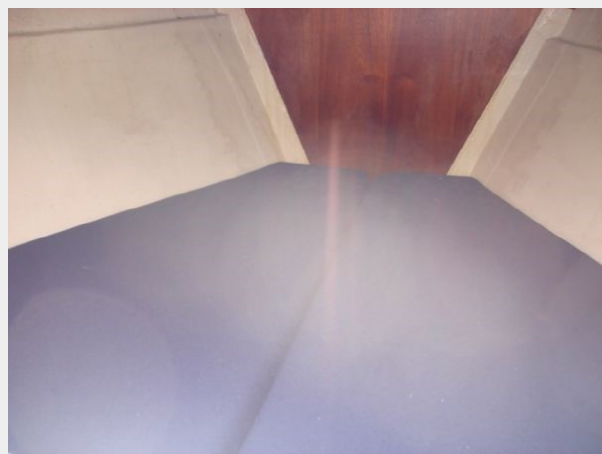
**Anchor Well**



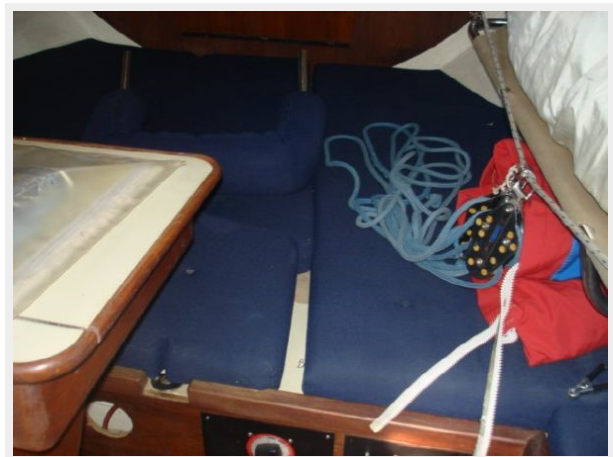
**Swim ladder and transom Step up**



**Forward "V" sleeps two crew members comfortably**



**Aft cabin & Chart station**



**Pipe Berth Starboard Side**



**Pipe berths starboard & Port**



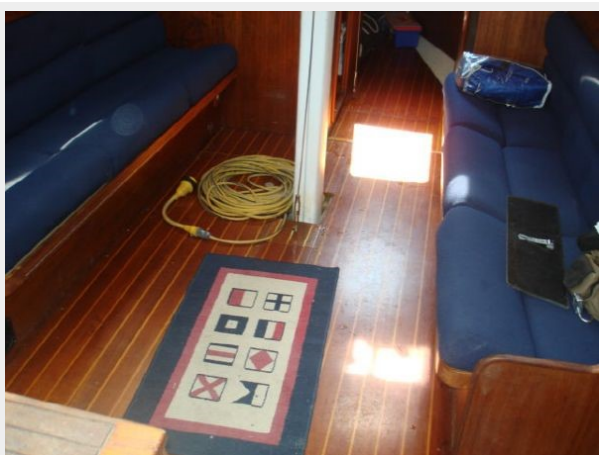
**Portside Berth**



**Pilot Berth Starboard Side**



**Teak & Holly in beautiful condition**



**Looking Aft**





**Looking aft port side**



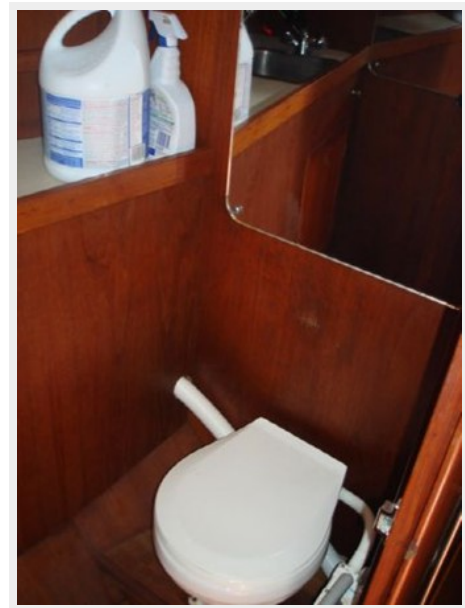
**Aft of Galley**



**Head Sink**



**Manual marine toilet**



**Head**



**3-Burner Propane Stove**



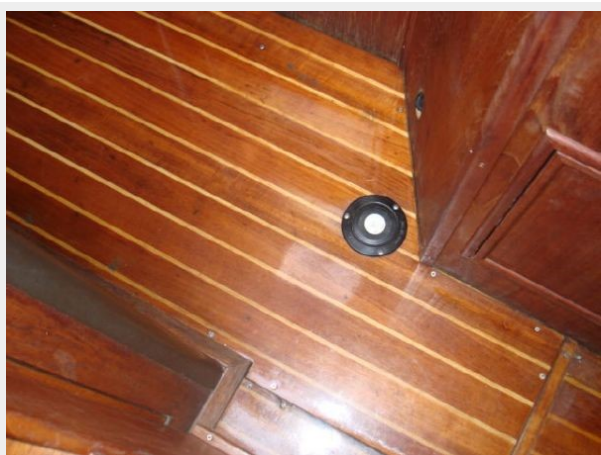
**Loads of storage**



**Refrigerated Icebox & freezer**



**Fresh water foot pump**



**Yanmar (Portside view) Easy Access**

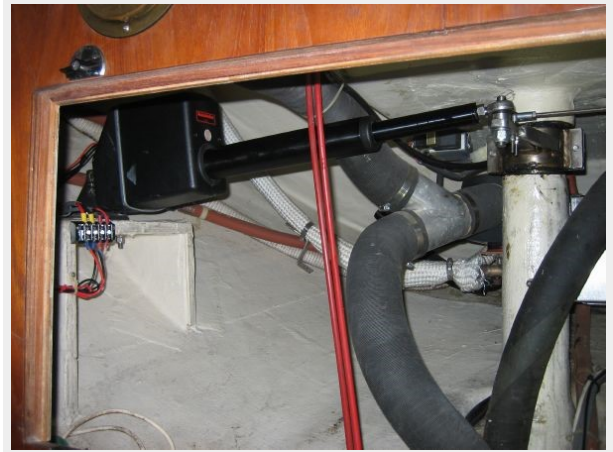




**35 HP Yanmar**



**Ray Marine piston driven Auto-Pilot**



**Cockpit Ignition**



**Wind, Speed & Radio Repeaters**



**Electrical Panel/Nav Station**



**Cockpit**



---

# CONTACTS

---

Andrey Shestakov, leading yacht broker of the sales department of Shestakov Yacht Sales Inc. Shestakov Yacht Sales Inc., the official representative of the Miami/Fort Lauderdale FL headquarters.

---

## Contact details

---

Email: [andrey@shestakovyachtsales.com](mailto:andrey@shestakovyachtsales.com)

Web: [shestakovyachtsales.com/en/](http://shestakovyachtsales.com/en/)

---

## Telephones

---

USA: +1(954)274-4435

---

## Office hours

---

Monday – Saturday: **9:00 - 21:00** EDT

Sunday: **closed**

---

## Address

---



Harbour Towne Marina, 850 NE 3rd St,  
STE 213, Dania, FL 33004