

## BIG JACK — HUNTER



**Судостроитель:** HUNTER

**Год постройки:** 1994

**Модель:** Center Cockpit

**Цена:** **ЦЕНА ЯХТЫ ПО ЗАПРОСУ**

**Местонахождение:** United States

**Длина общая:** 42' 0" (12.80m)

**Ширина:** 14' 0" (4.27m)

**Макс. осадка:** 4' 11" (1.50m)

Купить **Big Jack — HUNTER** а также выбрать подходящую вам яхту из нашего каталога яхт вам поможет опытный яхтенный брокер Андрей Шестаков. На сегодняшний день компания **Shestakov Yacht Sales Inc.** имеет большое количество яхт в собственном списке продаж, а также тесно сотрудничает со всеми крупными яхтенными производителями по всему миру.

Для того чтобы купить яхту **Big Jack — HUNTER** а также проконсультироваться по любому вопросу связанному с покупкой, продажей, чартером яхт позвоните по телефону **+7(918)465-66-44**.

# ОГЛАВЛЕНИЕ

ОГЛАВЛЕНИЕ	2
ХАРАКТЕРИСТИКИ	4
Основная информация	4
Размеры	4
Скорость, вместимость и масса	4
Размещение	4
Корпус и палуба	4
Информация о двигателе	5
ПОДРОБНОЕ ОПИСАНИЕ	6
Description	6
Galley	6
Electrical	6
Mechanical	7
Electronics	8
Sails & Rigging	8
Ground Tackle and Safety Equipment	8
Hull and Deck	9
Miscellaneous items	10
Исключения	10
Отказ от ответственности	10
ФОТОГРАФИИ	11
Bow Profile	11
Stern Profile - Starboard	11
Stern Profile - Port	11
Transom	11
Transom - detail	12
Gennaker	12
Profile Plan	12

---

Interior Layout	12
Electrical Breaker panel	13
Main Salon	13
Engine Room	13
Generator	13
Cockpit	13
Cockpit Enclosure	13
Cockpit	14
Helm Station	14
Custom Cockpit Table with seating for 6 people	14
Standard Cockpit Table	14
Engine Instrument Panel in Cockpit	14
Direct TV Antenna	14
Davits	15
Boom Vang	15
TriGlobe Radar Reflector	15
Electric Windlass	15
<b>КОНТАКТЫ</b>	<b>16</b>
Контактная информация	16
Телефоны	16
Время работы	16
Адрес	16

# ХАРАКТЕРИСТИКИ

## Основная информация

Тип судна: Center Cockpit

Подкатегория: Палубный парусник

Модельный год: 1994

Год постройки: 1994

Страна: United States

## Размеры

Длина общая: 42' 0" (12.80m)

Длина по ватерлинии: 38' 0" (11.58m)

Ширина: 14' 0" (4.27m)

Макс. осадка: 4' 11" (1.50m)

Трапы: 60' 3" (18.36m)

## Скорость, вместимость и масса

Водоизмещение: 24000 Pounds

Вместимость воды: 300 Gallons

Вместимость сточного бака: 15 Gallons

Объем топливного бака: 70 Gallons

## Размещение

Спальные места: 6

Всего ком. состава: 2

## Корпус и палуба

Материал корпуса: Fiberglass

---

## Информация о двигателе

---

**Двигатели:** 1

**Производитель:** Yanmar

**Тип топлива:** Diesel

---

# ПОДРОБНОЕ ОПИСАНИЕ

---

## Description

---

The Hunter Passage 42 blends center-cockpit comfort with surprising performance in a contemporary cruising boat with bluewater capabilities. Her powerful masthead rig, in-mast roller furling mainsail and jib and center-cockpit line-handling make those long passages truly enjoyable. There is even an aft double sun-deck with cushions for those long, lazy afternoons and a swim platform with pressure water hose for rinsing-off. Below, the 42 is truly a work of art. Designer fabrics, all-leather upholstery, hand-rubbed teak, and Corian counters provide a warm, friendly atmosphere, while her 14-foot beam gives the spaciousness you need and sleeps six, comfortably. The incredible salon is perfect for dining in or entertaining the crew. Any mate will appreciate the layout of the fully-equipped galley. Refrigerator-freezer, LPG stove with oven, microwave and storage galore will change your outlook on cooking aboard. Privacy is paramount for extended cruising and the Hunter 42 with its two-stateroom, two-head design keeps it that way. The sumptuous master stateroom offers a queen-size walk around berth, incredible storage and hanging lockers, plus a full head, complete with a shower-tub. The full-size berth, desk vanity, and adjoining head in the forward guest quarters will be a comfortable refuge after a great day at sea. Hunter provides a complete sailaway combination including an electronics package, electric anchor windlass, stereo-CD, inverter, and a full complement of safety gear - all currently updated..

## Galley

---

- U-shaped configuration
- Corian counter tops with teak fiddles
- Double stainless steel sink
- Pressure hot and cold water
- Rubberized non-skid sole surface
- Numerous storage drawers and lockers
- Hillerange 3-burner LPG stove with oven
- Wood cutting block on top of stove, when not in use, for extra counter space
- Panasonic microwave oven
- Adler Barbour 12vdc refrigerator and freezer
- Dishes, cutlery and galley gear for 6 people

## Electrical

---

- 12 Volt circuit with breaker panel and volt meter
- 2 x 12 Volt house batteries, new in 2012
- 1 x 12 Volt isolated engine start battery with remote switch, new in 2012

- 1 X 24 Volt high capacity battery for thru' hull Bow Thruster, with battery charger.
- 2 X Perko battery selector switches
- Digital battery monitor
- Bilge pump - automatic with manual switch
- Fresh water plumbing system (hot & cold) with variable speed high-pressure pump
- 2 X Marine toilets - electric flush, with holding tank
- 2 X Shower pumps
- Electric anchor windlass, Maxwell 800 - 12vdc
- 4 X Hella Turbo fans
- Cabin lights
- Navigation, running and anchor lights
- Wireless remote mast-mounted spot light (broken)
- Remote interior lights turn-on system
- Xantrex Battery charger/inverter - Heart Freedom 25
- 2 X 120 VAC 30 amp shore power circuits, switchable
- AC breaker panel with amp meter
- 2 X 30 amp shore power cords
- 120 VAC outlets in all cabins
- Xantrex/Freedom digital battery/inverter monitor

## Mechanical

---

- Yanmar 4JH2, 62hp Diesel Engine with about 600 hours
- Racor fuel filter system
- Injectors serviced in October 2013
- Raw water pump replaced in October 2013
- All belts, fuel filters, water separator and oil filter changed in October 2013
- Diesel fuel tank was emptied and cleaned in October 2012
- Cockpit mounted engine panel, RPM, Oil Pressure, Water Temp, Engine Hours
- Cockpit remote starter battery switch
- Dual lever engine controls
- Stainless Steel drive shaft
- Conventional stuffing box
- 3 blade propeller
- Kohler 7.5 Kw Diesel Generator with less than 560 hours
- Racor fuel filter system
- Air conditioning - Dual Cruiseair system with reverse cycle for heat
- Diesel heater, with thermostat, ducted to all three cabins
- 24vdc thru' hull Bow Thruster with dedicated high capacity 24vdc battery and charger
- Joystick bowthruster controller located at the helm
- Wheel steering, column and linkage system (re-worked in 2012)
- Whale manual bilge pump operated from the cockpit
- Emergency tiller

---

## Electronics

---

- Raymarine ST 6001 Smart Pilot Series autopilot, includes: Steer to wind and Auto-tacking features
- Raymarine C-90 combination GPS Chartplotter/Radar/Sounder
- Raymarine ST 60 wind/speed/depth instrument
- Cellphone repeater/amplifier mounted at masthead
- Standard Horizon Spectrum+ VHF radio with DSC enabled, RAM Mike with controls in the cockpit and mast-mounted remote speaker
- KVH Trac-4 DirectTV antenna and receiver, pole-mounted on the transom
- Interphase TwinScope forward and side-looking scanning sonar with color display
- Compass repeater display (electronic) mounted on main salon bulkhead
- Panasonic 13" flat screen TV with VCR and DVD players
- AM/FM Stereo system with CD player and sub-woofer mounted under the cabin sole. Speakers mounted inside, in the cockpit and on the sun-deck

---

## Sails & Rigging

---

- Selden aluminum mast and boom
- Z-Spars rigid boom vang
- Whisker pole
- 1 X 19 Stainless Steel standing rigging with Norseman terminals
- Furlexin-mast roller furling
- Furlex headsail roller furling gear
- Lewmar mainsheet blocks
- Schaefer mainsheet traveler
- Schaefer adjustable jib blocks
- 2 X Lewmar 50 ST primary winches
- 1 X Lewmar 44 ST mainsheet winch
- 1 X Lewmar 30 ST winch
- 10 X Line clutches
- Dacron furling mainsail - new in 2010
- Dacron 130% overlapping genoa
- Storm jib (ATN)
- Doyle Tri-radial spinnaker and spinnaker rigging
- TriGlobe, mast mounted, radar reflector
- Windex at the masthead

---

## Ground Tackle and Safety Equipment

---

- Bruce 44lb anchor with 10' of 5/16" chain and 150' of 5/8" nylon rode
- Danforth 40lb anchor with 100' of 5/8" nylon rode



- Maxwell 12vdc anchor windlass
- Air Horn and Bell
- Flare Kit
- Flashlights
- Spotlight
- Bosun's Chair
- First Aid kit
- Fire Extinguishers
- Life Jackets. 4 X Type II, 2 X Type I
- Buoyant Cushion, Type IV throwable PFD
- Life Ring
- Ritchie 6" Magnetic Compass in cockpit
- Charts and Cruising Guides
- Navigation and Plotting tools
- Tool Kit
- Ship's files and equipment manuals
- Caribe MVPL-9 Dinghy with: oars, fuel tank and accessories and 8 hp 2-cycle Mercury outboard motor (unused)

## Hull and Deck

---

- Molded fiberglass hull with white gelcoat topsides
- Hull topsides acid washed in October 2013
- Hull topsides buffed and waxed in October 2013
- Stainless Steel, double anchor roller
- 4 X Lewmar deck hatches
- 16 X Lewmar opening ports
- 10 X Lexan fixed ports
- Maxwell 800 12vdc anchor windlass
- Winged keel (4' 11" draft) and spade rudder
- Molded fiberglass deck with white gelcoat and gray nonskid
- Stainless Steel stanchions, bow and stern pulpits
- Double Stainless Steel wire lifelines with boarding gates to port and starboard
- Chain locker with hinged lid
- Spacious center cockpit with contoured seats and custom foam cushions
- Custom made, folding teak cockpit table with seating for six people (with steering wheel removed)
- Custom, insulated windshield cover
- Starboard drinkholder
- Stainless Steel cockpit arch
- Canvas spray dodger
- Canvas Bimini top with roll-down side curtains to fully enclose the cockpit area
- Molded swim platform transom with fold-down swim ladder

- Transom lockers (2) and freshwater hot/cold shower
- Stainless Steel Forespar Nova Davit system for dinghy
- Fresh water hook-up for shore-water
- Magma Stainless Steel BBQ Grill with food preparation board, stanchion-mounted

## Miscellaneous items

---

- US Flag and staff
- Docklines and fenders
- Deck hose and nozzle with stand alone 110vac high pressure pump
- Deck bucket and brush
- Boat Hooks
- Linens and towells for six people
- Portable vacuum cleaner with attachments
- Ship's clock
- Winch handles
- Custom-made, thick foam, queen mattress in master cabin

## Исключения

---

При продаже яхты исключаются личные вещи владельца.

## Отказ от ответственности

---

Компания предоставляет описание судна или яхты добросовестно, но не может гарантировать точность этой информации, а также не ручается за техническое состояние. Покупатель должен проинструктировать своих агентов или оценщиков исследовать представленную информацию более подробно, по собственному желанию. Продажа судна или яхты, изменение цены или снятие с продажи будет происходить без предварительного уведомления.

# ФОТОГРАФИИ

**Bow Profile**



**Stern Profile - Starboard**



**Stern Profile - Port**



**Transom**



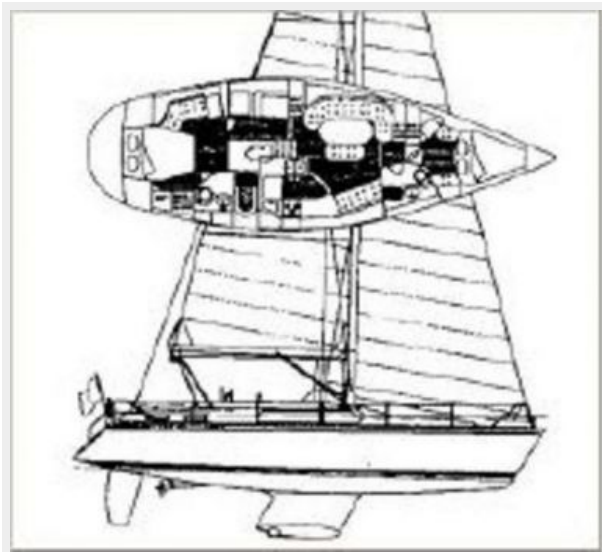
**Transom - detail**



**Gennaker**



**Profile Plan**



**Interior Layout**



**Main Salon**



**Electrical Breaker panel**



**Engine Room**



**Generator**



**Cockpit**



**Cockpit Enclosure**



**Cockpit**



**Helm Station**



**Standard Cockpit Table**



**Custom Cockpit Table with seating for 6 people**



**Engine Instrument Panel in Cockpit**



**Direct TV Antenna**



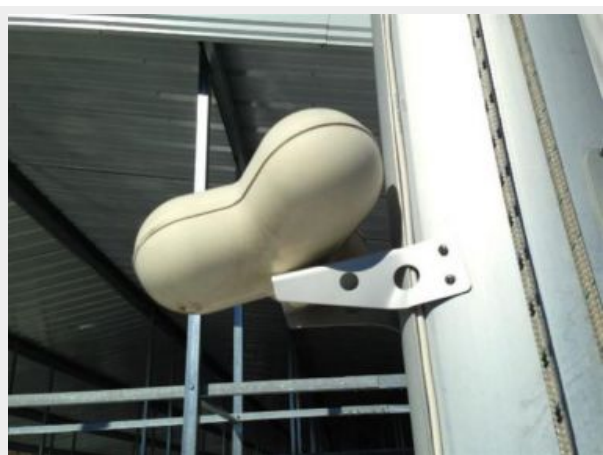
**Davits**



**Boom Vang**



**TriGlobe Radar Reflector**



**Electric Windlass**



# КОНТАКТЫ

---

Андрей Шестаков (Andrey Shestakov) – ведущий яхтенный брокер отдела продаж яхт и судов компании Shestakov Yacht Sales Inc. Официальный представитель Shestakov Yacht Sales Inc. для русскоговорящих клиентов в центральном офисе компании в Майами/Форт Лодердейл/Флорида/США.

## Контактная информация

---

Email: [andrey@shestakovyachtsales.com](mailto:andrey@shestakovyachtsales.com)

Web: [shestakovyachtsales.com](http://shestakovyachtsales.com)

## Телефоны

---

Краснодарский край: **+7(918)465-66-44**

США, Майами, Флорида: **+1(954)274-4435**

## Время работы

---

Понедельник – Суббота: **9:00 - 21:00**  
EDT

Воскресенье: **Закрито**

## Адрес

---



Harbour Towne Marina, 850 NE 3rd St,  
STE 213, Dania, FL 33004