

MISS MAGNOLIA — VIKING



Судостроитель: VIKING

Год постройки: 2009

Модель: Катер для спортивной рыбалки

Цена: **ЦЕНА ЯХТЫ ПО ЗАПРОСУ**

Местонахождение: United States

Длина общая: 50' 0" (15.24m)

Ширина: 17' 0" (5.18m)

Макс. осадка: 4' 10" (1.47m)

Купить **Miss Magnolia — VIKING** а также выбрать подходящую вам яхту из нашего каталога яхт вам поможет опытный яхтенный брокер Андрей Шестаков. На сегодняшний день компания **Shestakov Yacht Sales Inc.** имеет большое количество яхт в собственном списке продаж, а также тесно сотрудничает со всеми крупными яхтенными производителями по всему миру.

Для того чтобы купить яхту **Miss Magnolia — VIKING** а также проконсультироваться по любому вопросу связанному с покупкой, продажей, чартером яхт позвоните по телефону **+7(918)465-66-44**.

ОГЛАВЛЕНИЕ

ОГЛАВЛЕНИЕ	2
ХАРАКТЕРИСТИКИ	3
Обзор	3
Основная информация	3
Размеры	3
Скорость, вместимость и масса	3
Размещение	4
Корпус и палуба	4
Информация о двигателе	4
ПОДРОБНОЕ ОПИСАНИЕ	5
50 VIKING	5
Исключения	11
Отказ от ответственности	11
ФОТОГРАФИИ	12
КОНТАКТЫ	20
Контактная информация	20
Телефоны	20
Время работы	20
Адрес	20

ХАРАКТЕРИСТИКИ

Обзор

AVAILABLE TO VIEW AT THE FT. LAUDERDALE INT'L BOAT SHOW, OCT. 30th THROUGH NOV. 3rd. VISIT HMY'S DISPLAY ON D-DOCK TO VIEW "MISS MAGNOLIA".

"Miss Magnolia" features **many custom options** including her Palm Beach Tower, Teak cockpit and covering boards, ice chipper, underwater lights, water maker, Release Marine helm chairs & rocket launcher, NAV NET 3D electronics, Flir night vision camera, SAT TV, Side Scan Sonar, Release Marine teak pod helm, extra fuel, upgraded MAN 1360 engines, Bow Thruster, Premier interior and **much more**.

Основная информация

Тип судна: Катер для спортивной рыбалки

Подкатегория: Convertible

Модельный год: 2009

Год постройки: 2009

Страна: United States

Верх: 2359

Открытая палуба мостика: Да

Кубрик: Да

Размеры

Длина общая: 50' 0" (15.24m)

Ширина: 17' 0" (5.18m)

Макс. осадка: 4' 10" (1.47m)

Скорость, вместимость и масса

Водоизмещение: 66500 Pounds

Вместимость воды: 175 Gallons

Вместимость сточного бака: 50 Gallons **Объем топливного бака:** 1200 Gallons

Размещение

Всего кают: 3

Всего ком. состава: 2

Корпус и палуба

Материал корпуса: Fiberglass

Информация о двигателе

Производитель: MAN

Модель: 2842L423 CRM

Тип двигателя: Inboard

Тип топлива: Diesel

ПОДРОБНОЕ ОПИСАНИЕ

50 VIKING

Vessel Walkthrough

The 50 Viking Convertible shows off both the stylish Viking exterior with the optional black mask, sleek lines along with a new interior. Still holding true with its high gloss teak wood throughout, the new design features a reversed starboard side galley with an island and bar stools. She features a three stateroom, two head layout with the master amidship to starboard and both guest staterooms with over/under berths. The salon has a leather salon sofa to port and follows up to bow, to the dinette. "Miss Magnolia" features many custom options including her Palm Beach tower, Teak cockpit and covering boards, Ice chipper, underwater lights, water maker, Release helm chairs, Release rocket launcher, NAV NET 3D electronics, Flir night vision camera, SAT TV, Side Scan Sonar, Release teak pod helm, extra fuel, upgraded MAN 1360 engines, Bow Thruster, Premier interior and much more.

Salon

- High gloss teak throughout
- Teak valances
- Leather L shaped sofa
- Camera in salon
- Sharp 42" LCD Flat screen color TV
- SAT TV
- Teak cocktail table
- Electric salon door
- Teak interior salon door
- Designer carpet w/ runners throughout
- Premier décor package
- Bose entertainment center
- Bose speakers
- Amtico flooring in entranceway
- Electrical panel down
- 110V Outlets
- Island bar stools
- Hunter Douglas silhouette blinds
- Teak dinette table
- Optional teal strips in headliner & in companionway
- Lambrequins w/ fabric & teak trim

Galley

- Granite Counter tops

- Molded SS sink w/ satin nickel faucet
- Recessed 3 burner stove
- Island style galley with bar stools (2)
- Amtico flooring
- Subzero under counter refrigerators/freezers
- Microwave/convection oven
- High gloss teak throughout
- Storage drawers
- Blinds

Master Stateroom

- Island queen bed w/ upgraded mattress
- Designer bedding & pillows
- Custom wallpaper
- High gloss teak paneling throughout
- Drawers under bed
- Large hanging locker
- Drawer space
- Overhead lighting w/ dimmers
- Hatch w/ screen and cover
- Air conditioning controls and vent
- JVC 12v CD/DVD player
- Stereo speakers
- 110V Outlets
- SAT TV
- 20" Sharp Flat screen TV
- Designer carpet
- En-suite head
- Teak privacy door

Master Head

- Granite Countertop
- Molded sink w/ satin nickel faucet
- Sea Land Vacu-Flush electric head
- Custom wallpaper
- Amtico floor
- Stall shower w/ Grohe designer faucet
- Designer towel racks w/ satin nickel finish
- Teak high gloss vanity face
- Storage under vanity
- Mirror

Guest Stateroom - Forward

- Over/Under bunks to port
- Designer bedding & pillows
- Designer carpet
- Custom wallpaper
- Overhead lighting w/ dimmers
- Reading lights
- Overhead hatch w/ screen & cover
- Large hanging locker
- High gloss teak throughout
- Air conditioning controls and vent
- 110V Outlets
- Flat screen TV
- JVC 12v CD/DVD player
- SAT TV

Guest Stateroom

- Over/Under bunks
- Designer bedding & pillows
- High gloss teak throughout
- Designer carpet
- Custom wallpaper
- Hanging locker
- Drawers
- Flatscreen TV
- JVC 12v CD/DVD player
- SAT TV
- Overhead lighting w/ dimmer
- Privacy door
- En-suite head

Guest Head

- Granite Countertop
- Sea Land Electric head
- Amtico floor
- Custom wallpaper
- Stall shower w/ Grohe designer faucet
- Designer towel racks
- Teak high gloss vanity face
- Storage under vanity
- Mirror

Cockpit

- Teak Covering Boards and Cockpit sole
- Teak Ladder steps to bridge
- Transom door & gate
- 6 Gunwale rod holders
- Live well in sole
- Mezzanine seating
- Cockpit freezer
- Refrigerated step box
- Fresh & saltwater wash down
- Cablemaster
- Rupp outriggers
- Rupp center rigger
- Tackle center
- Awlgrip lazarette
- Split lid fish box
- Rope lighting under coaming
- 12 volt electric reel outlets
- Release Marine Rocket Launcher

Flybridge

- Release teak helm pod
- Enclosure: 3-sided Costa Clear
- Camera on bridge
- Bow thruster w/ joystick and shifter controls
- Quartz lights
- Single lever controls
- Release helm chairs
- Reverse jump seat
- Custom bolstered bridge curtains
- Teaser reels
- MAN monitors
- Moritz monitors
- Hatch lid at stairwell
- Fresh water spigot on bridge
- Rexroth engine controls

Palm Beach Towers

- Palm Beach Towers Tuna Tower w/ molded 6' gap
- Tri-color (red, white and blue) LED lights w/ fiberglass recess
- Radar Pod Oval-Style w/ sliding Teaser Reel door

- Quartz Light 110v Molded Fwd Platform S/S Bezel
- Control Box 50' w/ flush-mounted Compass
- Tower Sunshade Molded Top w/ painted oval center tube
- (4) Welded antenna mounts
- Bench seat w/ backrest
- Control box top painted Satin Black
- Antenna Mount SAT TV dome-molded fiberglass
- Antenna Mount SAT phone on Hardtop molded fiberglass
- Rod holder polished aft legs 2-P-2-S
- Controls and Steering MAN
- Drop-down Electronics box - power actuated
- 39' Outrigger Pipewelders, 39' - 3 spreader, Bridge Release
- Solid aft bar
- Pipewelders installed Outriggers
- Rigger locks
- Pipewelders Center Rigger
- Enclosure 3-sided Track to Track edge of Helm, EX2CY
- Strataglass panels, (1) Port, (1) Starboard, aft edge of helm to end of bridge
- Powder Coated Aluminum Flangeless Track
- Air Vent Fwd Top Panel
- Stern Light Molded
- Electrical Teaser Reels MIYA EPOCH Super US9 "R" 24V
- Marine Series Blue Lights underneath sunshade
- 12 Systems Blue LED lights under platform w/ fiberglass recess
- (6) Upgraded Tri-color Lights in Hardtop
- (3) Quartz Lights, Masthead/Anchor Light, Teaser Reels
- Bond Tower
- Release Marine grommets in Hardtop for Teaser Line
- Wash-down water in Tower

Electronics

- Furuno NAVNET 3D Electronics with Black Box Controls
- (2)15' Furuno Monitors
- (1) 12'' Furuno Monitor
- Furuno NAVNET 72NM Radar 6' Open Array
- (2) Furuno GPS Antenna's
- 2KW Video Sounder
- AIS Reciever
- Furuno Dual Frequency Searchlight Sonar System- Side Scan sonar
- Furuno Auto pilot
- (2) ICOM 604 VHF's w/ hailer
- Icom Salon Command Mic
- Claroin bridge Stereo with Sirius and Ipod jack

- Flir Ocean view Thermal and Low light camera
- ACR Spotlight
- Cockpit and Engine Room Cameras
- KVH FB250 Sat phone
- KVH M7 G 24" Satellite dish
- (2) Sony playstation 3 Game consoles- Salon and one stateroom
- (3)12v CD/DVD players for staterooms
- Live XM Satellite weather

Tower

- Furuno NAVNET 3D 8.4" Display
- Furuno RD 30
- Teaser Reel remote panel
- Icom VHF Remote

Computer

- VEI Marci 24VDC Dedicated Onboard PC computer
- RF wireless mouse
- RF wireless keyboard
- Marine Amplified WI FI System and antenna
- HP printer behind salon TV

Hull and Deck

- Hull color- Fighting lady yellow
- Black bottom paint
- Boot stripe-Viking blue
- Black mask
- Fiberglass thru hulls
- Under water lights
- Delta T vent system
- Oval exhaust outlets
- Additional fuel tank forward
- Lewmar windlass
- Spigot in anchor locker
- Prop pockets
- Awlgrip anchor locker forward
- Recessed trim tab covers
- Bow thruster

Electrical

- Cablemaster

- Onan generator 17.5 kW
- 110V/12V/24V system
- Batteries
- Battery chargers
- Isolator

Engine Room

- MAN 2842L423 1360CRM HP Engines
- Onan 17.5 kW generator
- 700 GPD watermaker w/ Auto back flush
- Camera system
- Oil change system w/ cockpit connection
- Electric fuel priming pumps-24V
- Awlgrip engine room/sea strainers/priming pumps/thru hulls
- Dual Racor fuel filters
- Fuel/water separator
- Watermaker w/ autoflush
- Pre wired for Eskimo machine

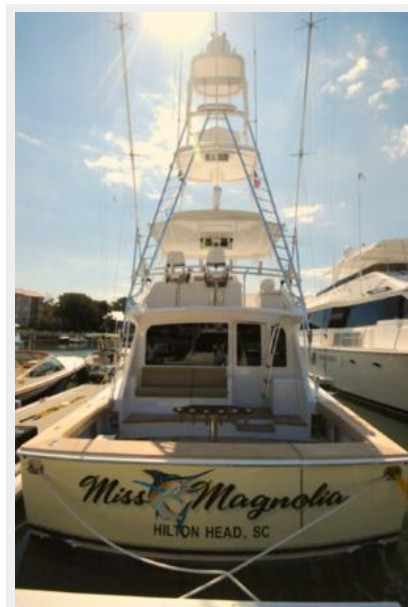
Исключения

При продаже яхты исключаются личные вещи владельца.

Отказ от ответственности

Компания предоставляет описание судна или яхты добросовестно, но не может гарантировать точность этой информации, а также не ручается за техническое состояние. Покупатель должен проинструктировать своих агентов или оценщиков исследовать представленную информацию более подробно, по собственному желанию. Продажа судна или яхты, изменение цены или снятие с продажи будет происходить без предварительного уведомления.

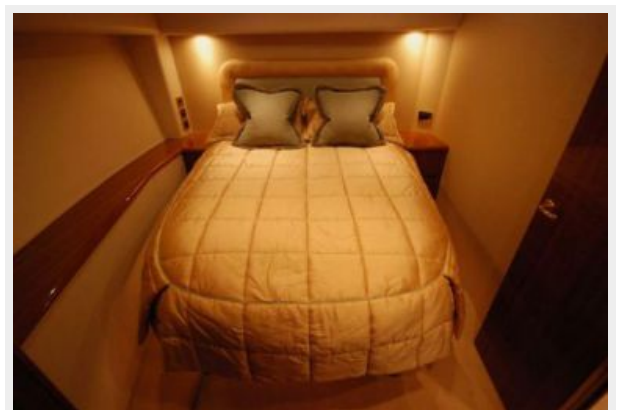
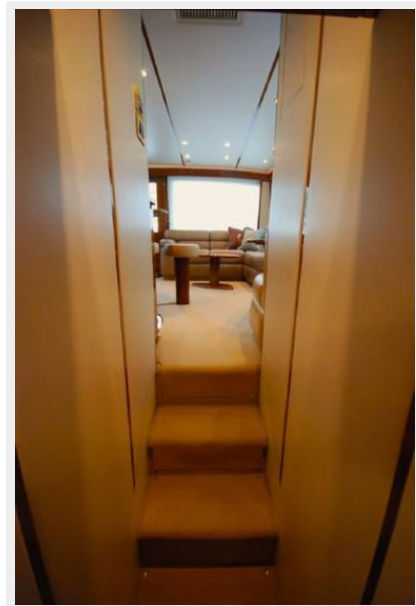
ФОТОГРАФИИ

















КОНТАКТЫ

Андрей Шестаков (Andrey Shestakov) – ведущий яхтенный брокер отдела продаж яхт и судов компании Shestakov Yacht Sales Inc. Официальный представитель Shestakov Yacht Sales Inc. для русскоговорящих клиентов в центральном офисе компании в Майами/Форт Лодердейл/Флорида/США.

Контактная информация

Email: andrey@shestakovyachtsales.com

Web: shestakovyachtsales.com

Телефоны

Краснодарский край: **+7(918)465-66-44**

США, Майами, Флорида: **+1(954)274-4435**

Время работы

Понедельник – Суббота: **9:00 - 21:00**
EDT

Воскресенье: **Закрето**

Адрес



Harbour Towne Marina, 850 NE 3rd St,
STE 213, Dania, FL 33004