

## NO NAME — CARVER



**Builder:** CARVER

**Year Built:** 2004

**Model:** Cruiser

**Price:** PRICE ON APPLICATION

**Location:** United States

**LOA:** 36' 0" (10.97m)

**Beam:** 13' 2" (4.01m)

**Min Draft:** 2' 7" (0.79m)

**Max Draft:** 2' 7" (0.79m)

Our experienced yacht broker, Andrey Shestakov, will help you choose and buy a yacht that best suits your needs **NO NAME — CARVER** from our catalogue. Presently, at Shestakov Yacht Sales Inc., we have a wide variety of yachts available on our sale's list. We also work in close contact with all the big yacht manufacturers from all over the world.

If you would like to buy a yacht **NO NAME — CARVER** or would like help answering any questions concerning purchasing, selling or chartering a yacht, please call **+1(954)274-4435**

---

# TABLE OF CONTENTS

---

|                              |    |
|------------------------------|----|
| TABLE OF CONTENTS            | 2  |
| SPECIFICATIONS               | 3  |
| Overview                     | 3  |
| Basic Information            | 7  |
| Dimensions                   | 7  |
| Speed, Capacities and Weight | 7  |
| Accommodations               | 8  |
| Hull and Deck Information    | 8  |
| Engine Information           | 8  |
| PHOTOS                       | 9  |
| CONTACTS                     | 13 |
| Contact details              | 13 |
| Telephones                   | 13 |
| Office hours                 | 13 |
| Address                      | 13 |

# SPECIFICATIONS

## Overview

This 360 Sport Sedan is very clean and well maintained. For the past 7 years, the current owner has kept her undercover and enjoyed weekend cruises to the beaches. With color underwater lights and a Trilogy Dinghy Lift, everything is set up for overnights at the best anchorages in Florida. Fully equipped with generator, air **conditioning, fully galley, beautiful salon with raised dinette, owner's stateroom forward with queen centerline berth and full head with separate stall shower, the engine room is immaculate and a reflection of the care this owner has taken of his yacht.**

Call today to arrange a showing on this beautiful Carver! **Specs** Builder: Carver Yachts Flag of Registry: United States Hull Shape: Modified Vee **Dimensions** LOA: 37 ft 8 in Beam: 13 ft 2 in Minimum Draft: 2 ft 7 in Maximum Draft: 2 ft 7 in Bridge Clearance: 14 ft 6 in Headroom: 6 ft 5 in Dry Weight: 24746 lbs **Engines** Engine 1: Engine Brand: Volvo Year Built: 2004 Engine Model: 8.1 Gi Engine Type: Inboard Engine/Fuel Type: Gas/Petrol Location: Starboard Engine Hours: 500 Drive Type: V Drive Engine(s) Total Power: 375 HP Engine 2: Engine Brand: Volvo Year Built: 2004 Engine Model: 8.1 Gi Engine Type: Inboard Engine/Fuel Type: Gas/Petrol Location: Port Engine Hours: 500 Drive Type: V Drive Engine(s) Total Power: 375 HP **Tanks** Fresh Water Tanks: (75 Gallons) Fuel Tanks: 2 (280 Gallons) Holding Tanks: (25 Gallons) **Accommodations** Number of double berths: 2 Number of cabins: 2 Number of heads: 1 **Electronics** Plotter - Raytheon RL 70C Color Cockpit speakers VHF - Ray Model 53 DSC Radar - Raytheon 24 Mile Depthsounder - Raymarine GPS Radio - Clarion model XMD 3 TV set - Salon and Master stateroom Compass - Ritchie Log-speedometer - Ray Marine CD player - Clarion 6 stack **Inside Equipment** Air conditioning - Two, Marine Air Hot water Deep freezer Microwave oven Electric bilge pump Refrigerator Bow thruster Oven Marine head Battery charger **Electrical Equipment** Generator - Kohler 7.3 KV Shore power inlet **Outside Equipment/Extras** Swimming ladder Tender Cockpit table Davits - Trillogy davit system **Covers** Bimini Top

## Construction

Structural engine mountings - reinforced stringer mountings with double-gusseted, angle steel plates

Fabricated Aluminum floor frames with stainless steel stanchions

Hand-laid, molded fiberglass components featuring composite laminate hullsides, decks, and cabintops

Molded fiberglass stringer system

Cherry wood bulkheads, cabinetry, trim and doors through-out cabin, with high-gloss finish

Solid fiberglass hull bottoms with Knystex substrates and Vinylester barrier coat

Tinted, tempered safety glass frameless window systems

Unitized deck, cockpit, and cabintop construction with integral aluminum truss reinforcement in cabintop structure

## **Manufacturer Provided Description**

The Carver 360 Sport Sedan is wonderfully versatile. Whether cruising, fishing or diving, this sporty yacht will make anything more fun. Its attractive contemporary styling and signature two-tiered windows for extra light and style, make it one of the most appealing vessels in its class. The spacious bridge with generous seating also includes a captain's chair and ergonomically designed dash. The large cockpit is the perfect size for all kinds of on-water activities. The cabin features a unique raised dinette / lounge with UltraLeather seating. Rich, cherry wood cabinetry with high-gloss finish adds warmth and beauty to the space. Sleeping accommodations include two staterooms.

## **Mechanical**

Air conditioning - 2-zone, 32,000 BTU; with reverse cycle heat;dedicated shore power connector

Cutlass bearings - synthetic rubber composite

Dripless shaft logs

Exhaust mufflers - engines, generator

Fuel tanks - welded, baffled 5052 aluminum

Hydraulic steering

Propellers - manufacturer-certified

Propellers shafts - aquamet

Rudders - 421 manganese bronze

Struts - 421 manganese bronze

Trim tabs - stainless steel, hydraulic

## **Electrical**

AC/DC distribution panels with magnetic circuit breakers and integral bilge blower controls; AC and DC Voltmeters; AC ammeter

Batteries (4) - deep cycle, marine (12v)

Battery chargers (2) - electronic, AC-DC converters

External connectors - CATV, telephone

Generator - 7.3 kW, gasoline

Ground Fault Circuit Interrupt (GFCI) protection - all 110V outlets

Shore power connectors (2) - 30 amp

Shore power cords (2) - 50 ft.

Wiring system - tinned copper strand wire, harnessed, color-coded, labeled, meets or exceeds ABYC standards

### **Water & Waste Systems**

Fresh water system - pressurized (12v) with large-capacity filter

Fresh water storage tank - polyethylene

Fresh water tank level monitor

Shore water connection with pressure-reduction valve

Shower sump pump - automatic/manual operation

Waste holding tank - with filtered vent and dockside pumpout

Waste tank level monitor

Water and waste lines - constructed of molecularly cross linked polyethylene

Water heater - 11 gallons (110V)

### **Safety & Navigation**

Anodes - zinc, sacrificial

Battery master disconnect switches

Battery restraint brackets

Bilge alarm - high water

Bilge blowers (12V)

Bilge pumps (3) - 1500 gph each, automatic/manual operation

Brass valves for underwater thru-hulls

CO detectors in salon and staterooms

Compass - illuminated, dual read

Engine alarms - temperature and oil pressure

Fire suppression system - automatic; FE241

Galvanic isolator/zinc saver

Horn -air/electric (12V), trumpet

Internal bonding system

Molded nonskid surfaces on all walk decks - diamond pattern

Navigation lights (COLREGS)

Spotlight

Windlass package - with 35 lb. anchor and 125 ft. of 5/16" chain

### **Command Bridge**

Beverage holders (6) - recessed, integral, self draining

Electronics arch - custom aluminum with acrylic polyurethane surface coating and UV protection

Electronics arch access plates (6) - corrosion-resistant polymer attached with noncorroding screws and waterproof sealant

Lights (3) - courtesy, recessed, with exterior-mounted switch

Lounge - with storage beneath, accomdates 4 adults

Self draining walk surface

Windshield - wraparound, tinted glass with stainless steel frame

### **Helm**

Access panel - provides access to helm wiring

Accessory space - for installing navigation equipment

Adapter - 12V

Beverage holders (2) - recessed, self-draining, with stainless steel holder

Companion seats (2) - adjustable, pedestal base, high-quality marine-grade upholstery, embroidery stitching

Dash - fiberglass with faux distressed leather accents

DC circuit breaker panel for helm electronics

Grab rails (2) stainless steel, on either side of helm console

Helm seat - adjustable, pedestal base, high-quality marine-grade upholstery, embroidery stitching

Stereo speakers (2)

Tilt steering wheel

Gauges - synchronizer; rudder angle; tachometer, engine hours (1 per engine)

Rocker switch controls

## Basic Information

---

**Category:** Cruiser

**Sub Category:** Sedan Cruiser

**Model Year:** 2004

**Year Built:** 2004

**Country:** United States

**Fly Bridge:** Yes

## Dimensions

---

**LOA:** 36' 0" (10.97m)

**Beam:** 13' 2" (4.01m)

**Min Draft:** 2' 7" (0.79m)

**Max Draft:** 2' 7" (0.79m)

**Clearance:** 14' 6" (4.42m)

## Speed, Capacities and Weight

---

**Displacement:** 24746 Pounds

**Water Capacity:** 75 Gallons

**Holding Tank:** 25 Gallons

**Fuel Capacity:** 280 Gallons

---

## Accommodations

---

**Total Cabins:** 2

---

## Hull and Deck Information

---

**Hull Material:** Fiberglass

---

## Engine Information

---

**Engines:** 2

**Manufacturer:** Volvo

**Model:** 8.1 Gi

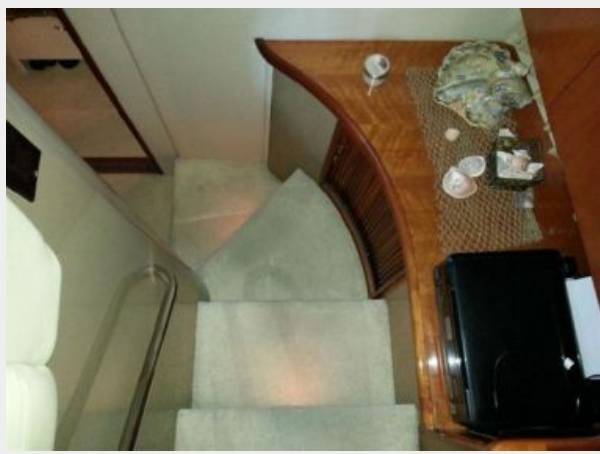
**Engine Type:** Inboard

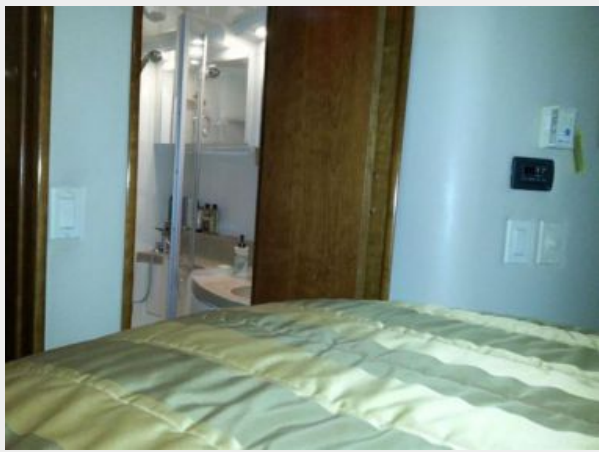
**Fuel Type:** Gas/Petrol



# PHOTOS









---

# CONTACTS

---

Andrey Shestakov, leading yacht broker of the sales department of Shestakov Yacht Sales Inc. Shestakov Yacht Sales Inc., the official representative of the Miami/Fort Lauderdale FL headquarters.

---

## Contact details

---

Email: [andrey@shestakovyachtsales.com](mailto:andrey@shestakovyachtsales.com)

Web: [shestakovyachtsales.com/en/](http://shestakovyachtsales.com/en/)

---

## Telephones

---

USA: +1(954)274-4435

---

## Office hours

---

Monday – Saturday: **9:00 - 21:00** EDT

Sunday: **closed**

---

## Address

---



Harbour Towne Marina, 850 NE 3rd St,  
STE 213, Dania, FL 33004