

# 39FT 1985 SEA RAY 390 EXPRESS CRUISER — SEA RAY



**Builder:** [SEA RAY](#)

**Year Built:** 1985

**Model:** Cruiser

**Price:** PRICE ON APPLICATION

**Location:** United States

**LOA:** 39' 0" (11.89m)

**Beam:** 13' 11" (4.24m)

**Cruise Speed:** 25 Kts. (29 MPH)

**Max Speed:** 30 Kts. (35 MPH)

Our experienced yacht broker, Andrey Shestakov, will help you choose and buy a yacht that best suits your needs 39ft 1985 Sea Ray 390 Express Cruiser — SEA RAY from our catalogue. Presently, at Shestakov Yacht Sales Inc., we have a wide variety of yachts available on our sale's list. We also work in close contact with all the big yacht manufacturers from all over the world.

If you would like to buy a yacht 39ft 1985 Sea Ray 390 Express Cruiser — SEA RAY or would like help answering any questions concerning purchasing, selling or chartering a yacht, please call **+1(954)274-4435**

---

# TABLE OF CONTENTS

---

TABLE OF CONTENTS	2
SPECIFICATIONS	3
Basic Information	3
Dimensions	3
Speed, Capacities and Weight	3
Accommodations	3
Hull and Deck Information	3
Engine Information	4
DETAILED INFORMATION	5
Galley	5
Accommodations	5
Additional Information	5
Exclusions	5
Disclaimer	5
PHOTOS	7
CONTACTS	19
Contact details	19
Telephones	19
Office hours	19
Address	19

---

# SPECIFICATIONS

---

## Basic Information

---

**Category:** Cruiser

**Sub Category:** Express

**Model Year:** 1985

**Year Built:** 1985

**Country:** United States

## Dimensions

---

**LOA:** 39' 0" (11.89m)

**Beam:** 13' 11" (4.24m)

## Speed, Capacities and Weight

---

**Cruise Speed:** 25 Kts. (29 MPH)

**Max Speed:** 30 Kts. (35 MPH)

**Displacement:** 16400 Pounds

**Water Capacity:** 100 Gallons

**Holding Tank:** 40 Gallons

**Fuel Capacity:** 300 Gallons

## Accommodations

---

**Total Cabins:** 2

**Total Heads:** 1

## Hull and Deck Information

---

**Hull Material:** Fiberglass

---

## Engine Information

---

**Engines:** 2

**Manufacturer:** Caterpillar

**Model:** 3208

**Engine Type:** Inboard

**Fuel Type:** Diesel

---

## DETAILED INFORMATION

---

### Galley

---

- Refrigerator/Freezer
- Princess 3 burner stove
- Panasonic Easy Touch microwave
- Double basin stainless steel sink

### Accommodations

---

- 2 staterooms
- Separate vanity in master stateroom
- Guest stateroom bunk converts to sofa
- Spacious salon
- Stall shower
- Flat screen TV in salon
- Huge cockpit with seating for as many as 8
- Nearly 14' beam
- Combined galley and breakfast bar facing curved settee

### Additional Information

---

- Custom covers for all cockpit seats
- Custom covers for helm and hatch
- Phillips HDTV
- Flat Screen TV and DVD player
- Upgraded stereo and cockpit speakers
- Auto Sync

### Exclusions

---

Owner's personal belongings.

### Disclaimer

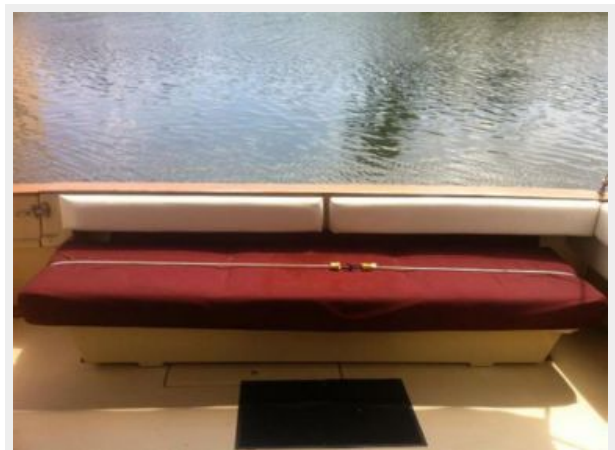
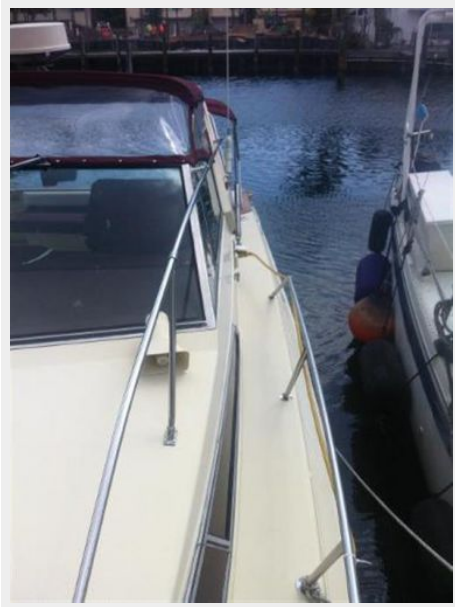
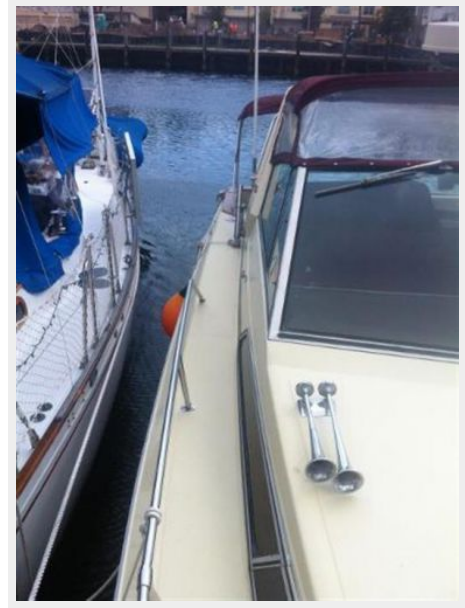
---

The Company offers the details of this vessel or yacht in good faith but cannot guarantee or warrant the accuracy of this information nor warrant the condition of the vessel. A buyer should instruct his representatives, agents, or his surveyors, to investigate such details as the buyer desires validated. This vessel or yacht is offered subject to prior sale, price change, or withdrawal

without notice.

# PHOTOS





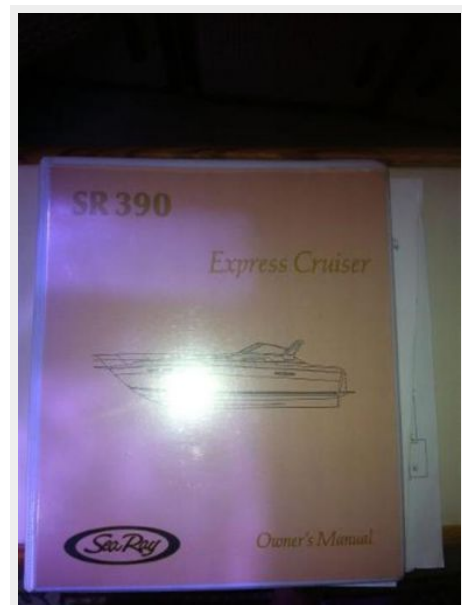


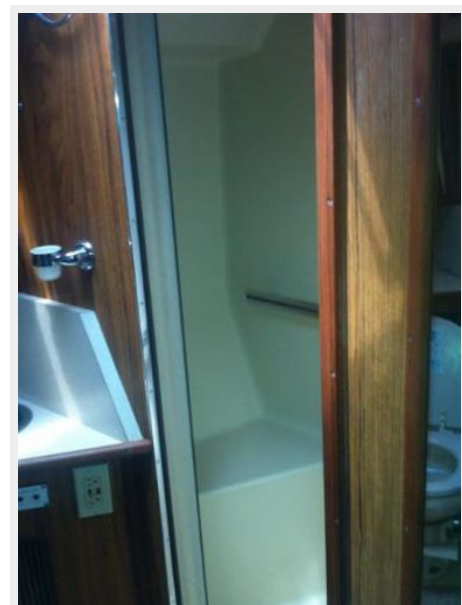
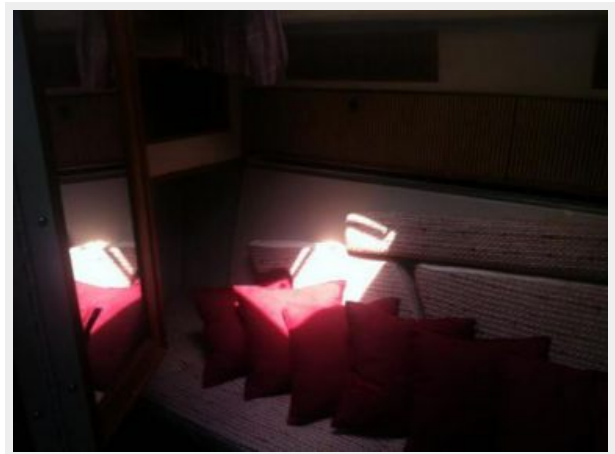


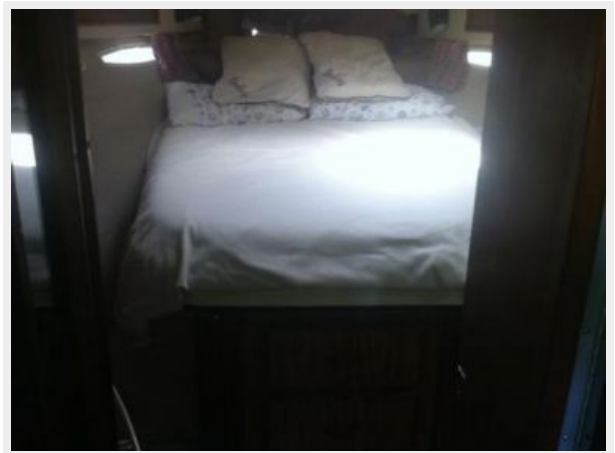
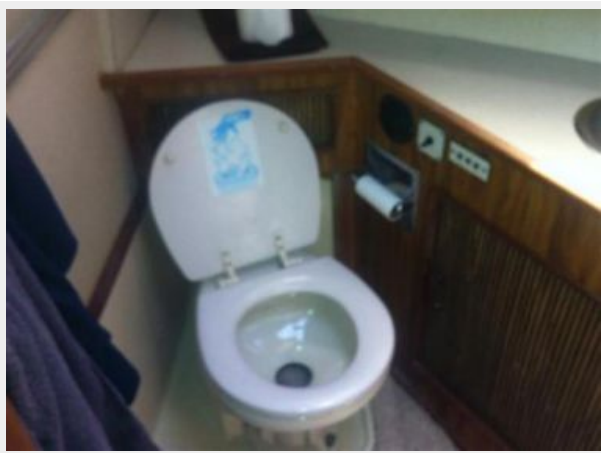
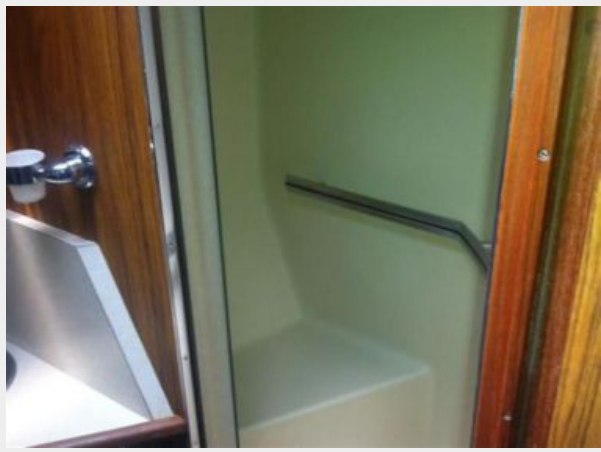


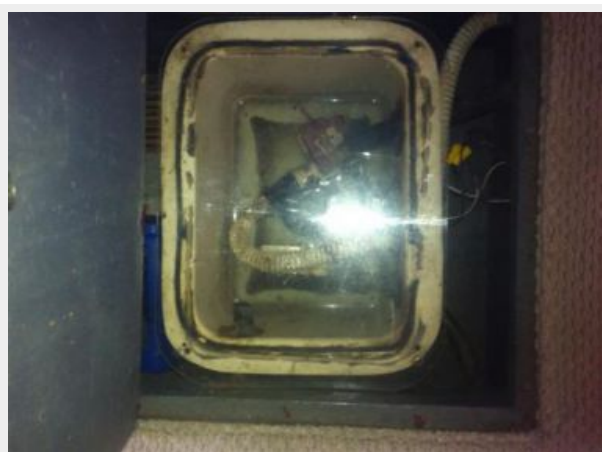
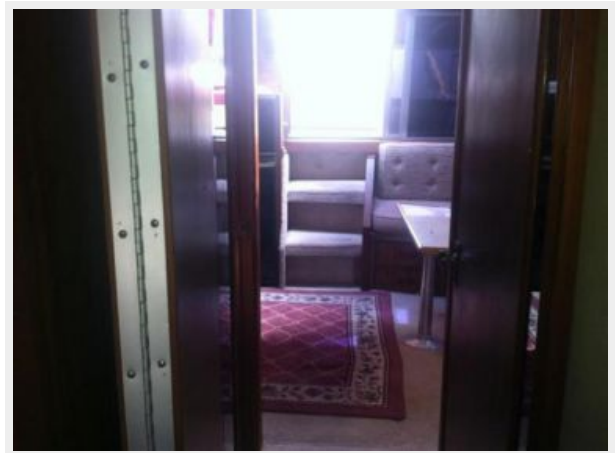




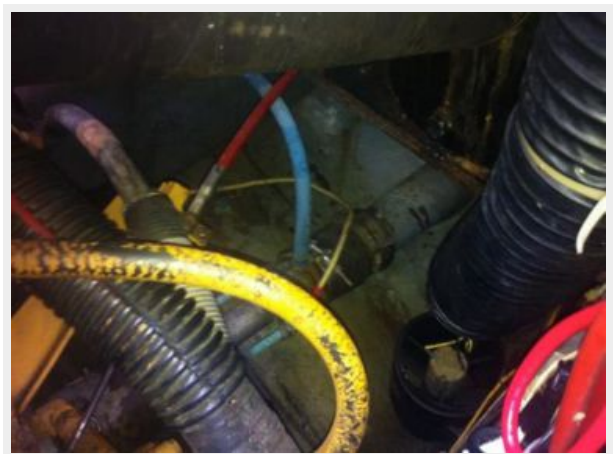
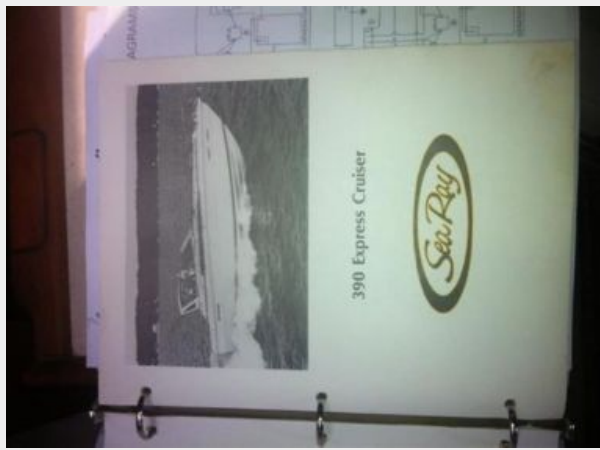


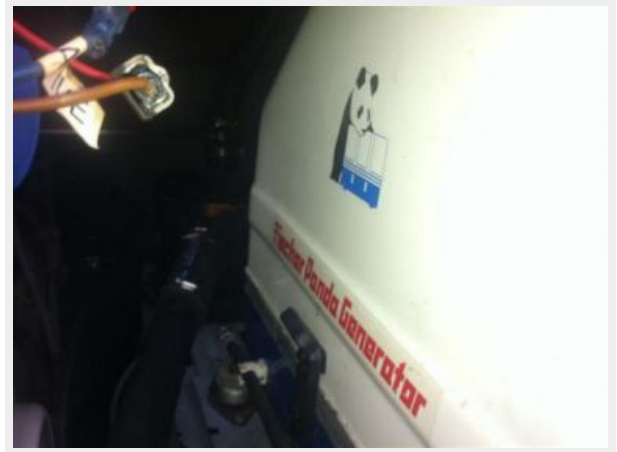
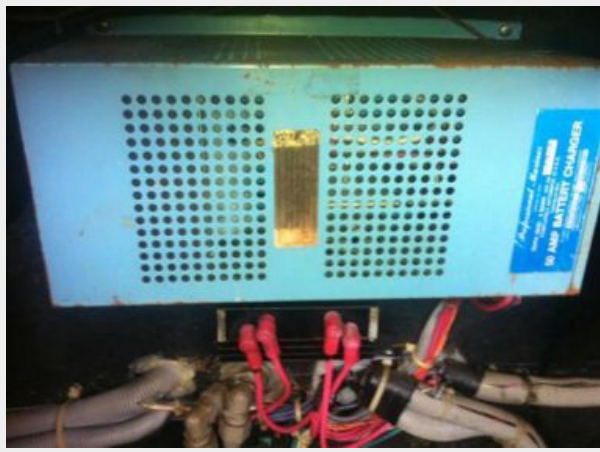












# CONTACTS

---

Andrey Shestakov, leading yacht broker of the sales department of Shestakov Yacht Sales Inc. Shestakov Yacht Sales Inc., the official representative of the Miami/Fort Lauderdale FL headquarters.

## Contact details

---

Email: [andrey@shestakovyachtsales.com](mailto:andrey@shestakovyachtsales.com)

Web: [shestakovyachtsales.com/en/](http://shestakovyachtsales.com/en/)

## Telephones

---

USA: +1(954)274-4435

## Office hours

---

Monday – Saturday: **9:00 - 21:00** EDT

Sunday: **closed**

## Address

---



Harbour Towne Marina, 850 NE 3rd St,  
STE 213, Dania, FL 33004