

## FRESH WATER BEAUTY — SEA RAY



**Builder:** SEA RAY

**Year Built:** 1991

**Model:** Motor Yacht

**Price:** PRICE ON APPLICATION

**Location:** United States

**LOA:** 50' 0" (15.24m)

**Beam:** 15' 0" (4.57m)

**Max Draft:** 4' 2" (1.27m)

Our experienced yacht broker, Andrey Shestakov, will help you choose and buy a yacht that best suits your needs **Fresh Water Beauty — SEA RAY** from our catalogue. Presently, at Shestakov Yacht Sales Inc., we have a wide variety of yachts available on our sale's list. We also work in close contact with all the big yacht manufacturers from all over the world.

If you would like to buy a yacht **Fresh Water Beauty — SEA RAY** or would like help answering any questions concerning purchasing, selling or chartering a yacht, please call **+1(954)274-4435**

# TABLE OF CONTENTS

TABLE OF CONTENTS	2
SPECIFICATIONS	5
Basic Information	5
Dimensions	5
Speed, Capacities and Weight	5
Accommodations	5
Hull and Deck Information	5
Engine Information	6
DETAILED INFORMATION	7
General Details	7
Flybridge	7
Galley	7
Salon	8
Entertainment Center	8
Master Stateroom	8
Master Head	8
VIP Stateroom	9
Guest Stateroom	9
Guest/Day-head	9
Cockpit	9
Additional Information	9
Exclusions	10
Disclaimer	10
PHOTOS	11
Inside storage	11
Starboard	11
Cockpit (some shadows)	11
Starboard 2	11

Salon looking aft	12
Entertainment Center Port side	12
Galley/Salon Looking Forward	12
Galley 1 Starboard side	12
Salon Wet Bar	12
Galley 2	12
SideBar Fluid Dispenser	13
Lower Helm/Entertainment Center	13
Salon Looking Aft	13
Lower Helm	13
Upper Helm/Flybridge	13
Upper Helm 2	13
Flybridge Seating	14
Flybridge Helm Seating	14
Master Stateroom King size bed	14
Master Stateroom 2	14
Master Stateroom Head	14
Master Stateroom Head Vanity	14
Master Stateroom Vanity with concealed hanging locker	15
Master Stateroom Vanity to Port	15
Port Mid ship Guest Stateroom Bunks 2	15
Port Mid ship Guest Stateroom Bunks	15
Starboard Guest Stateroom Full size	16
Manufacturer Provided Image	16
<b>CONTACTS</b>	<b>17</b>
Contact details	17
Telephones	17
Office hours	17
Address	17



---

# SPECIFICATIONS

---

## Basic Information

---

**Category:** Motor Yacht

**Model Year:** 1991

**Year Built:** 1991

**Country:** United States

**Vessel Top:** Enclosed Pilothouse

**Fly Bridge:** Yes

## Dimensions

---

**LOA:** 50' 0" (15.24m)

**Beam:** 15' 0" (4.57m)

**Max Draft:** 4' 2" (1.27m)

**MFG Length:** 55' 0" (16.76m)

## Speed, Capacities and Weight

---

**Displacement:** 40000 Pounds

**Water Capacity:** 200 Gallons

**Holding Tank:** 40 Gallons

**Fuel Capacity:** 600 Gallons

## Accommodations

---

**Total Cabins:** 3

**Total Berths:** 6

**Total Heads:** 2

## Hull and Deck Information

---

**Hull Material:** Fiberglass

**Deck Material:** Composite Fiberglass

---

## Engine Information

---

**Engines:** 2

**Manufacturer:** Detroit Diesel

**Model:** 8-V92

**Engine Type:** Inboard

**Fuel Type:** Diesel

---

# DETAILED INFORMATION

---

## General Details

---

**The largest model in the Sea Ray fleet when she was introduced in 1989,**

This 500 Sedan Bridge is a well-built cruising yacht with a surprisingly spacious interior.

This is a big 50-footer with an expansive salon, two full heads, and three staterooms.

A wraparound sofa and built-in entertainment center highlight the expansive salon, which is separated from the large, U-shaped galley by a convenient breakfast bar.

The master stateroom is huge with lots of storage and direct access to a private head.

The portside guest stateroom has a full-size bed, while the crew quarters opposite are fitted with over/under bunks.

Topside, the flybridge of the Sedan Bridge is another big attraction—it's huge, with seating for a small crowd.

Optional 8-V92 675hp Detroit Diesels.

## Flybridge

---

1. New Canvas and Isinglass in 2009 –full bridge enclosure for colder weather-stores neatly behind salon sofa when not needed.
2. New Garmin 5212 Chartplotter multifunction 2009
3. New Garmin GHP 10 autopilot 2009 with wireless remote
4. New Garmin depth sounder 2009
5. New Garmin HD radar 2009
6. New XM Satellite Weather 2012 (integrated in Garmin 5212)
7. New Clarion Stereo/DVD/iPod player/XM and Speakers 2012
8. Rebuilt icemaker 2012
9. New Snap-in carpeting 2012
10. Seats 8 or more.

## Galley

---

1. New Delta Faucet 2012
2. New Stainless Steel Summit refrigerators and freezers 2011
3. New Convection/Microwave Oven 2011
4. Sidebar automatic alcoholic beverage dispenser 2012

5. Synthetic teak and holly flooring 2012
6. Garbage compactor
7. Built-in coffee maker
8. Four burner electric stove
9. Roman blinds new 2013

---

## Salon

---

1. New carpeting 2011
2. New Sofa 2012 (storage behind the sofa)
3. New occasional chairs and tables 2012
4. New track lighting 2011
5. New roman blinds 2013

---

## Entertainment Center

---

1. Rebuilt 2011
2. 40" LED TV 2012-can receive data from Garmin 5212 Chartplotter
3. Sony Blu-ray DVD w/Wifi and Netflix 2012
4. Denon Home Theater Receiver (zoned) 2013
5. Boston Acoustics Powered Subwoofer 2012
6. Kenwood Audio Speakers (6) 2012
7. Cockpit Speakers 2013 separate zone

---

## Master Stateroom

---

1. King size v-berth
2. New memory foam mattress 2013
3. 20" Magnavox LCD TV with DVD
4. Two cedar lined hanging lockers
5. Ample storage with forward lazarette
6. Opening Bomar Hatch with both screen and sunshade
7. New Carpeting 2011

---

## Master Head

---

1. New Synthetic Teak and Holly flooring
2. New Faucet 2013
3. New cabinet hardware 2012
4. Rebuilt Vacuflush toilets and Vacuflush pumps 2012 (both heads)



5. Full size shower
6. Elongated bowl toilet
7. LED lighting for when at anchor

---

## VIP Stateroom

---

1. Double bed
2. 20" Flat panel TV 2012
3. new mattress 2013
4. new carpeting 2011
5. LED Lighting
6. Ample storage

---

## Guest Stateroom

---

1. Two twin bunks
2. 20' flat panel TV with DVD
3. LED lighting

---

## Guest/Day-head

---

1. New synthetic Teak and Holly flooring 2012
2. Rebuilt Vacuflush toilet
3. New vacuum tank and pump 2011
4. New faucet 2013

---

## Cockpit

---

1. New Synthetic teak sole 2013
2. Magma gas grill 2012
3. New outdoor speakers 2013/separate zone
4. Gunnel treads-teak and holly-new 2013
5. Hinged access to aft lazarette 2013

---

## Additional Information

---

- Great Fresh Water Cruiser
- New Good Windlass 2012

- All four Cutlass bearings replaced in 2014
- Nibral Props, Recent Prop Scan, Both correct.

## **Exclusions**

---

Owner's personal belongings.

## **Disclaimer**

---

The Company offers the details of this vessel or yacht in good faith but cannot guarantee or warrant the accuracy of this information nor warrant the condition of the vessel. A buyer should instruct his representatives, agents, or his surveyors, to investigate such details as the buyer desires validated. This vessel or yacht is offered subject to prior sale, price change, or withdrawal without notice.

# PHOTOS

**Inside storage**



**Starboard**



**Cockpit (some shadows)**



**Starboard 2**



Salon looking aft



Entertainment Center Port side



Galley/Salon Looking Forward



Galley 1 Starboard side



Salon Wet Bar



Galley 2





**SideBar Fluid Dispenser**



**Lower Helm/Entertainment Center**



**Salon Looking Aft**



**Lower Helm**



**Upper Helm/Flybridge**



**Upper Helm 2**



**Flybridge Seating**



**Flybridge Helm Seating**



**Master Stateroom King size bed**



**Master Stateroom 2**



**Master Stateroom Head**



**Master Stateroom Head Vanity**

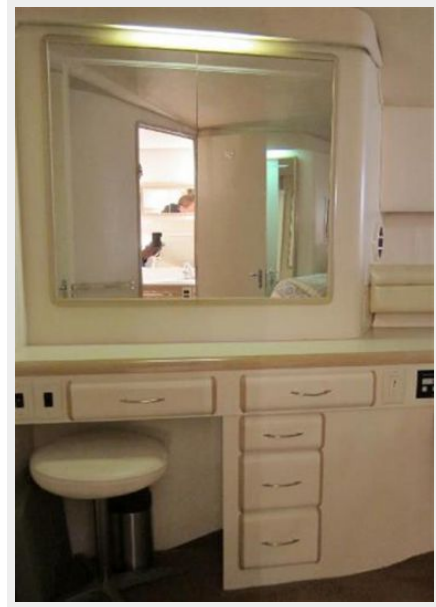




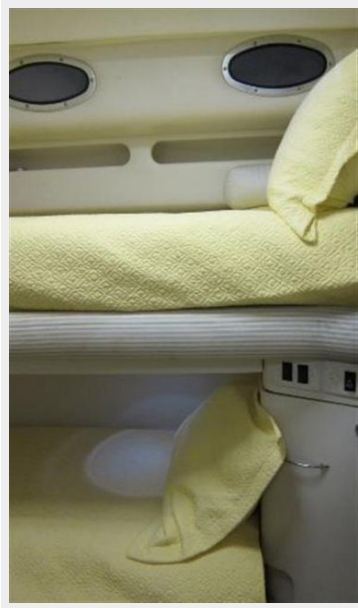
**Master Stateroom Vanity to Port**



**Master Stateroom Vanity with concealed hanging locker**



**Port Mid ship Guest Stateroom Bunks 2**



**Port Mid ship Guest Stateroom Bunks**



### Starboard Guest Stateroom Full size



### Manufacturer Provided Image





# CONTACTS

---

Andrey Shestakov, leading yacht broker of the sales department of Shestakov Yacht Sales Inc. Shestakov Yacht Sales Inc., the official representative of the Miami/Fort Lauderdale FL headquarters.

## Contact details

---

Email: [andrey@shestakovyachtsales.com](mailto:andrey@shestakovyachtsales.com)

Web: [shestakovyachtsales.com/en/](http://shestakovyachtsales.com/en/)

## Telephones

---

USA: +1(954)274-4435

## Office hours

---

Monday – Saturday: **9:00 - 21:00** EDT

Sunday: **closed**

## Address

---



Harbour Towne Marina, 850 NE 3rd St,  
STE 213, Dania, FL 33004