

## FRESH WATER ONLY /CLEAN — CARVER



**Builder:** CARVER

**Year Built:** 2000

**Model:** Motor Yacht

**Price:** PRICE ON APPLICATION

**Location:** United States

**LOA:** 45' 0" (13.72m)

**Beam:** 14' 11" (4.55m)

**Max Draft:** 3' 7" (1.09m)

**Cruise Speed:** 19 Kts. (22 MPH)

**Max Speed:** 23 Kts. (26 MPH)

Our experienced yacht broker, Andrey Shestakov, will help you choose and buy a yacht that best suits your needs **Fresh Water Only /Clean — CARVER** from our catalogue. Presently, at Shestakov Yacht Sales Inc., we have a wide variety of yachts available on our sale's list. We also work in close contact with all the big yacht manufacturers from all over the world.

If you would like to buy a yacht **Fresh Water Only /Clean — CARVER** or would like help answering any questions concerning purchasing, selling or chartering a yacht, please call **+1(954)274-4435**

# TABLE OF CONTENTS

TABLE OF CONTENTS	2
SPECIFICATIONS	4
Basic Information	4
Dimensions	4
Speed, Capacities and Weight	4
Accommodations	4
Hull and Deck Information	4
Engine Information	5
DETAILED INFORMATION	6
Additional Information	6
Manufacturer Provided Description	6
Exclusions	6
Disclaimer	7
PHOTOS	8
Upper Helm	8
Port Volvo T-74P Engine	8
Starboard Volvo T-74P Engine	8
Flybridge Bench Seating and Table	8
Flybridge Seating and Helm	8
Flybridge Simran Electronics	8
Forward Queen Berth	9
Forward Berth with Opening Port	9
Galley from Forward Facing Aft	9
Galley From Aft Facing Forward	9
Galley 2	9
Lower Helm Seat 6 way electric adjustable	9
Lower Helm	10
Lower Helm Seating	10

Washer and Dryer	10
Mid-ship to Starboard Master Suite	10
Master Suite	10
Master Suite facing Aft	10
Master suite Door to head	11
Master facing Starboard	11
Master Head with Shower and Vanity	11
Master Suite Storage drawers	11
Master Vanity W/ sink and Mirror	12
Salon Port from Aft Facing Forward	12
Entertainment Center to Stb. Forward facing Aft.	12
Salon Port Seating with extended Table Facing Aft	12
Salon Seating with Storage Stb. side	13
Wet Bar Mid-ship aft to the \Lower Helm	13
Port Salon Seating with Table Facing aft	13
Wet Bar with Storage Below	13
Salon facing Aft	14
Manufacturer Provided Image	14
Manufacturer Provided Image	14
<b>CONTACTS</b>	<b>15</b>
Contact details	15
Telephones	15
Office hours	15
Address	15

---

# SPECIFICATIONS

---

## Basic Information

---

**Category:** Motor Yacht

**Sub Category:** Flybridge

**Model Year:** 2000

**Year Built:** 2000

**Country:** United States

**Fly Bridge:** Yes

## Dimensions

---

**LOA:** 45' 0" (13.72m)

**Beam:** 14' 11" (4.55m)

**Max Draft:** 3' 7" (1.09m)

**Clearance:** 16' 8" (5.08m)

**MFG Length:** 46' 11" (14.30m)

## Speed, Capacities and Weight

---

**Cruise Speed:** 19 Kts. (22 MPH)

**Max Speed:** 23 Kts. (26 MPH)

**Displacement:** 39600 Pounds

**Water Capacity:** 150 Gallons

**Holding Tank:** 80 Gallons

**Fuel Capacity:** 560 Gallons

## Accommodations

---

**Total Cabins:** 2

**Total Berths:** 2

**Total Heads:** 2

## Hull and Deck Information

---

**Hull Material:** Fiberglass

---

## Engine Information

---

**Engines:** 2

**Manufacturer:** Volvo Penta

**Model:** T-74P

**Engine Type:** Inboard

**Fuel Type:** Diesel

---

## DETAILED INFORMATION

---

### Additional Information

---

- Here are some of the added options when the owners purchased the boat new.
- Central Vac.
- Transom Handheld Shower hot and cold,
- Coffee maker, Dingy cradle storage,
- Duel Station spot light,
- Exterior Stereo controls,
- Fore deck Sun pad,
- Natural Ultraleather,
- Oil Change system.
- Shore water connect,
- Wet bar with ice maker, and more..
- Boat was first launched in May of 2001, always stored on its custom lift.
- Every system works on this very clean, lightly used Motor Yacht.

### Manufacturer Provided Description

---

The Carver 450 Voyager Pilothouse has a spacious flybridge with gold-trimmed custom-built gauges and dual captain's chairs. It also has a luxurious raised pilothouse below with an UltraLeather dinette - lounge, a power helm seat, and an overhead console.

On the flybridge, a curved lounge and a wetbar provide the ideal place for entertaining. An integral staircase leads to another comfortable spot, the roomy cockpit.

Below, lustrous cherry wood trim, designer fabrics and an entertainment center with TV - VCR and stereo enhance the inviting salon. An UltraLeather sofa with incliners and a love seat provide room to relax, while the wetbar adds to the fun.

The ultramodern galley is equipped with a three-burner cooktop, a microwave, solid surface countertops, and a dual voltage refrigerator and freezer.

Overnight accommodations on the Carver 450 Voyager Pilothouse include a master stateroom with a queen-size inner-spring berth, built-in storage, dual nightstands and cedar-lined lockers, plus a private head compartment.

The forward stateroom has a queen-size berth, a cedar-lined hanging locker, and private access to the forward head compartment.

### Exclusions

---

Owner's personal belongings.

## **Disclaimer**

---

The Company offers the details of this vessel or yacht in good faith but cannot guarantee or warrant the accuracy of this information nor warrant the condition of the vessel. A buyer should instruct his representatives, agents, or his surveyors, to investigate such details as the buyer desires validated. This vessel or yacht is offered subject to prior sale, price change, or withdrawal without notice.

# PHOTOS

**Upper Helm**



**Port Volvo T-74P Engine**



**Starboard Volvo T-74P Engine**



**Flybridge Bench Seating and Table**



**Flybridge Seating and Helm**



**Flybridge Simran Electronics**





**Forward Queen Berth**



**Forward Berth with Opening Port**



**Galley from Forward Facing Aft**



**Galley From Aft Facing Forward**



**Galley 2**



**Lower Helm Seat 6 way electric adjustable**



**Lower Helm**



**Lower Helm Seating**



**Washer and Dryer**



**Mid-ship to Starboard Master Suite**



**Master Suite**



**Master Suite facing Aft**



**Master suite Door to head**



**Master facing Starboard**



**Master Head with Shower and Vanity**



**Master Suite Storage drawers**



**Master Vanity W/ sink and Mirror**



**Salon Port from Aft Facing Forward**



**Salon Port Seating with extended Table Facing Aft**



**Entertainment Center to Stb. Forward facing Aft.**



**Salon Seating with Storage Stb. side**



**Wet Bar Mid-ship aft to the Lower Helm**



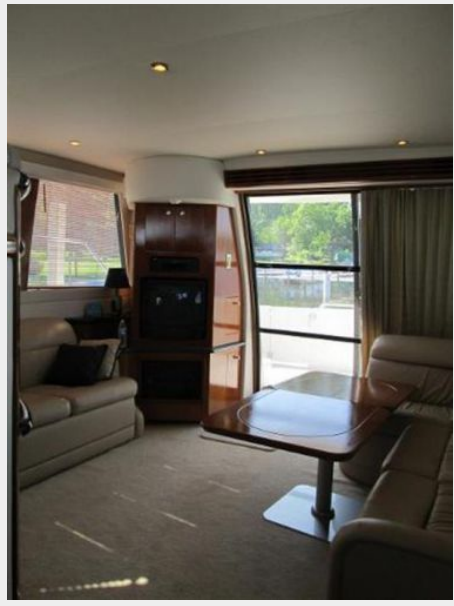
**Port Salon Seating with Table Facing aft**



**Wet Bar with Storage Below**



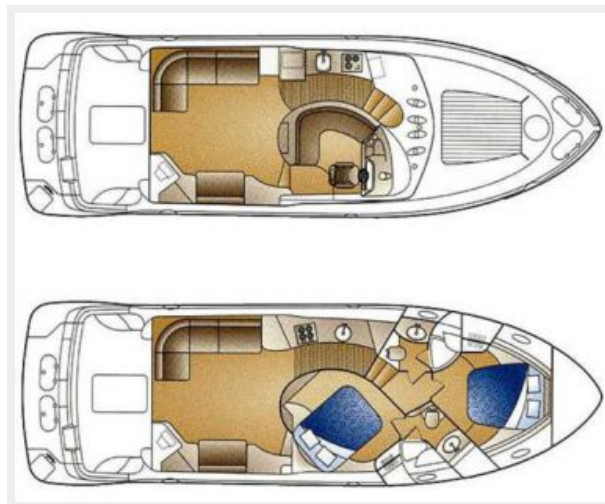
### Salon facing Aft



### Manufacturer Provided Image



### Manufacturer Provided Image



# CONTACTS

---

Andrey Shestakov, leading yacht broker of the sales department of Shestakov Yacht Sales Inc. Shestakov Yacht Sales Inc., the official representative of the Miami/Fort Lauderdale FL headquarters.

## Contact details

---

Email: [andrey@shestakovyachtsales.com](mailto:andrey@shestakovyachtsales.com)

Web: [shestakovyachtsales.com/en/](http://shestakovyachtsales.com/en/)

## Telephones

---

USA: +1(954)274-4435

## Office hours

---

Monday – Saturday: **9:00 - 21:00** EDT

Sunday: **closed**

## Address

---



Harbour Towne Marina, 850 NE 3rd St,  
STE 213, Dania, FL 33004