

## BLEW BAYOU — MANTA



**Builder:** MANTA

**Year Built:** 2006

**Model:** Catamaran

**Price:** PRICE ON APPLICATION

**Location:** United States

**LOA:** 42' 0" (12.80m)

**Beam:** 21' 0" (6.40m)

**Max Draft:** 3' 8" (1.12m)

Our experienced yacht broker, Andrey Shestakov, will help you choose and buy a yacht that best suits your needs **Blew Bayou — MANTA** from our catalogue. Presently, at Shestakov Yacht Sales Inc., we have a wide variety of yachts available on our sale's list. We also work in close contact with all the big yacht manufacturers from all over the world.

If you would like to buy a yacht **Blew Bayou — MANTA** or would like help answering any questions concerning purchasing, selling or chartering a yacht, please call **+1(954)274-4435**

---

# TABLE OF CONTENTS

---

TABLE OF CONTENTS	2
SPECIFICATIONS	3
Overview	3
Basic Information	4
Dimensions	5
Speed, Capacities and Weight	5
Accommodations	5
Hull and Deck Information	5
Engine Information	5
PHOTOS	6
CONTACTS	12
Contact details	12
Telephones	12
Office hours	12
Address	12

# SPECIFICATIONS

## Overview

Blew Bayou is a prime example of the highly sought after Manta 42 MKII catamaran, in sail away condition.

The yacht is professionally maintained, loaded with factory options and aftermarket upgrades. She has only been sailed by her original owner or his captain, never chartered. She was last hauled and serviced in January 2014, including premium bottom paint, sail drive maintenance, generator maintenance, and extensive preventative maintenance on all systems. The boat is kept in a "ready for passage at any moment" condition.

Blew Bayou is now at our dock in Ft. Myers Florida, and ready to show! **Boat Name** Blew Bayou  
**Specs** Builder: Manta Catamarans Designer: Manta Enterprises Flag of Registry: United States  
 Keel: Fin Hull Shape: Catamaran **Dimensions** LOA: 41 ft 8 in Beam: 21 ft 0 in LWL: 39 ft 10 in  
 Maximum Draft: 3 ft 8 in Displacement: 21000 lbs Full Load Bridge Clearance: 60 ft 0 in  
 Headroom: 6 ft 4 in Dry Weight: 18500 lbs **Engines** Engine 1: Engine Brand: Volvo Year Built:  
 2006 Engine Model: D1-30 Engine Type: Inboard Engine/Fuel Type: Diesel Location: Port  
 Engine Hours: 1980 Propeller: Folding propeller Drive Type: Sail drive Engine(s) Total Power:  
 30 HP Engine 2: Engine Brand: Volvo Year Built: 2006 Engine Model: D1-30 Engine Type:  
 Inboard Engine/Fuel Type: Diesel Location: Starboard Engine Hours: 1980 Propeller: Folding  
 propeller Drive Type: Sail drive Engine(s) Total Power: 30 HP **Tanks** Fresh Water Tanks: 1 (100  
 Gallons) Fuel Tanks: 1 (120 Gallons) Holding Tanks: 2 Plastic (20 Gallons) **Accommodations**  
 Number of single berths: 1 Number of double berths: 2 Number of cabins: 3 Number of heads: 2  
**Electronics** GPS VHF Radar Detector - AIS class B transponder Cockpit speakers Log-  
 speedometer Depthsounder Radar - 4 kw digital Raymarine TV set CD player Radio Autopilot  
 Navigation center - Full Raymarine electronics suite including autopilot remote Compass Plotter -  
 E 120 Raymarine Wind speed and direction DVD player Repeater(s) **Sails** Genoa - 100% North  
 premium full batten with camber spar, self tacking Fully battened mainsail - North Sails, premium  
 with Harken ball bearing mast track system and triple offshore reef system, North stack pack  
 Storm jib Asymmetric spinnaker - Two sails, 1 G-0 and 1 G-3, both in socks, bridle system for  
 offsetting tack **Rigging** Electric winch - Harken 42 two speed handles all lines at the helm  
 Steering wheel **Inside Equipment** Refrigerator - 6 cu. ft. Oven - Force 10 three burner with oven  
 Air conditioning - Dometic 16k btu front, 12k btu aft Battery charger - 100 amp Hot water - Isotemp  
 11 gal engine/electric Microwave oven Washing machine - Splendide washer/dryer Manual bilge  
 pump Sea water pump - washdown tap at anchor windlass Fresh water maker - Sea Recovery  
 300 gpd with UV treatment and remote at instrument panel Deep freezer - 4 cu. ft. Heating -  
 Dometic reverse cycle Electric bilge pump Electric head - Jabsco Quiet Flush **Electrical**  
**Equipment** Inverter - 2000 W Generator - NextGen 5.5 in frp sound shield Shore power inlet - 2 x  
 30 Amp Electrical Circuit: 110V **Outside Equipment/Extras** Cockpit table Solar panel - 450  
 watts, Blue Sea charger controller with instrument panel remote Swimming ladder - 3 step  
 telescoping both sterns Davits Tender - 11.5 AB with 20 hp Honda electric start Liferaft - 6 person

Cockpit cushions Cockpit shower Total Liferaft Capacity: 6 Electric windlass **Covers** Lazyjacks  
Mainsail cover Spray hood Lazy bag Cockpit cover Genoa cover

## Sails and Rigging

New North Sails OEM MK IV version Main and Jib installed in 2012.

IJPE : 693.00 sq ft I : 43.42 ft J : 14.92 ft P : 45.42 ft E : 16.25 ft Working Sail Area : 833.00 sq ft

Standing rigging replaced 2012. Mast upgraded with Harken ball bearing mast track system, and offshore quality triple reef system.

Two asymmetric spinnakers: G-0 and G-3 for excellent reaching and downwind performance.

Custom designed storm jib for safe, controlled sailing in gales.

## Anchor Tackle

Ground Tackle:

Primary - Delta 45 lb with 275 ft stainless chain (France) in very good condition, on Maxwell VWC1500 electric windlass.

Secondary - Fortress FX23 with 300 ft. 5/8 rode.

**Manufacturer Provided Description** The Manta 42 MkII incorporates features developed from owner feedback with thousands of ocean miles sailed over the past eight years. Each Manta is built to order, and offers the best quality/value ratio of any production catamaran in the world today.

## Basic Information

---

**Category:** Catamaran

**Model Year:** 2006

**Year Built:** 2006

**Country:** United States

**Cockpit:** Yes

---

## Dimensions

---

**LOA:** 42' 0" (12.80m)

**LWL:** 39' 10" (12.14m)

**Beam:** 21' 0" (6.40m)

**Max Draft:** 3' 8" (1.12m)

**Clearance:** 60' 0" (18.29m)

---

## Speed, Capacities and Weight

---

**Displacement:** 21000 Pounds

**Water Capacity:** 100 Gallons

**Holding Tank:** 20 Gallons

**Fuel Capacity:** 120 Gallons

---

## Accommodations

---

**Total Cabins:** 3

---

## Hull and Deck Information

---

**Hull Material:** Fiberglass

---

## Engine Information

---

**Engines:** 2

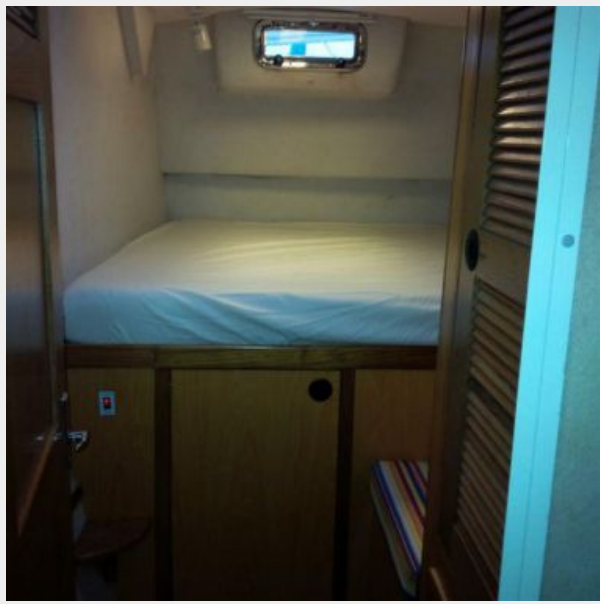
**Manufacturer:** Volvo

**Model:** D1-30

**Engine Type:** Inboard

**Fuel Type:** Diesel

# PHOTOS

















# CONTACTS

---

Andrey Shestakov, leading yacht broker of the sales department of Shestakov Yacht Sales Inc. Shestakov Yacht Sales Inc., the official representative of the Miami/Fort Lauderdale FL headquarters.

## Contact details

---

Email: [andrey@shestakovyachtsales.com](mailto:andrey@shestakovyachtsales.com)

Web: [shestakovyachtsales.com/en/](http://shestakovyachtsales.com/en/)

## Telephones

---

USA: +1(954)274-4435

## Office hours

---

Monday – Saturday: **9:00 - 21:00** EDT

Sunday: **closed**

## Address

---



Harbour Towne Marina, 850 NE 3rd St,  
STE 213, Dania, FL 33004