

TRISARA *NAME RESERVED* — WESTPORT



Builder: WESTPORT

Year Built: 2005

Model: Motor Yacht

Price: PRICE ON APPLICATION

Location: Bahamas

LOA: 130' 0" (39.62m)

Beam: 25' 0" (7.62m)

Max Draft: 6' 6" (1.98m)

Cruise Speed: 19 Kts. (22 MPH)

Max Speed: 25 Kts. (29 MPH)

Our experienced yacht broker, Andrey Shestakov, will help you choose and buy a yacht that best suits your needs **TRISARA *Name Reserved* — WESTPORT** from our catalogue. Presently, at **Shestakov Yacht Sales Inc.**, we have a wide variety of yachts available on our sale's list. We also work in close contact with all the big yacht manufacturers from all over the world.

If you would like to buy a yacht **TRISARA *Name Reserved* — WESTPORT** or would like help answering any questions concerning purchasing, selling or chartering a yacht, please call **+1(954)274-4435**

TABLE OF CONTENTS

TABLE OF CONTENTS	2
SPECIFICATIONS	4
Basic Information	4
Dimensions	4
Speed, Capacities and Weight	4
Accommodations	4
Hull and Deck Information	5
Engine Information	5
DETAILED INFORMATION	6
Walkthrough	6
Machinery	7
Communications and Navigation	7
Entertainment	7
Galley and Laundry	7
Tenders and Toys	8
Deck Equipment	8
Safety & Fire Protection	8
Refit Fall 2013	8
Broker Comments	10
Exclusions	11
Disclaimer	11
PHOTOS	12
Main Salon	12
Main Salon	12
Galley	12
Main Salon	12
Galley	12
Master Stateroom	12

King Guest - 1	13
His and Her Master Bath	13
Guest Bath	13
King Guest - 2	13
Guest Bath	13
Twin Guest	13
Guest Bath	14
Twin Guest	14
Aft Main Deck	14
Pilothouse	14
Sky Lounge	14
Upper Aft Deck	14
Jacuzzi Hot Tub	15
Sun Deck	15
Bow View	15
Sun Deck	15
Running	15
Aerial View	15
Aerial View	16
Layout	16
CONTACTS	17
Contact details	17
Telephones	17
Office hours	17
Address	17

SPECIFICATIONS

Basic Information

Category: Motor Yacht	Sub Category: Semi-Displacement
Model Year: 2005	Year Built: 2005
Refit Year: 2013	Country: Bahamas
Vessel Top: 2353	

Dimensions

LOA: 130' 0" (39.62m)	Beam: 25' 0" (7.62m)
Max Draft: 6' 6" (1.98m)	

Speed, Capacities and Weight

Cruise Speed: 19 Kts. (22 MPH)	Cruise Speed Range: 2000
Max Speed: 25 Kts. (29 MPH)	Water Capacity: 1600 Gallons
Fuel Capacity: 9940 Gallons	

Accommodations

Total Cabins: 5	Sleeps: 10
Total Heads: 7	Crew Cabin: 4
Crew Berths: 7	Crew Sleeps: 7

Hull and Deck Information

Hull Material: GRP

Deck Material: Teak

Hull Configuration: Semi-Displacement

Interior Designer: Claudette Bonville

Engine Information

Engines: 2

Manufacturer: MTU

Model: 12V4000

Engine Type: Inboard

Fuel Type: Diesel

DETAILED INFORMATION

Walkthrough

Welcome to TRISARA, an exceptional 130' Westport with recent upgrades that give her the equipment, décor and feel of a new yacht. Entering from starboard one will reach the formal foyer with a beautiful marble floor. Going aft from the foyer one will reach a formal dining area for 10 and then a spacious main salon with beautiful furnishings, L-shaped settee, two comfortable chairs with ottomans and additional seating. The main salon and dining area have ample storage and serving areas. TRISARA has beautiful well-kept cherry wood with granite countertop and state of the art entertainment with new HD TV, Kaleidescape, Blue-Ray and audio equipment throughout.

Forward to port is the state of the art galley with professional appliances including a pop-up vent for the six burner stove, ample storage and granite countertops, and features ample seating in the U-shaped dinette nook that is perfect for a casual breakfast or lunch. Further forward is the on-deck master stateroom with centerline king size bed with new high quality mattress and upholstered headboard. The master has a desk, settee, ample storage, drawers and walk-in closet. The master his and her bathroom has marble tile, whirlpool bath, etched glass-enclosed shower, and additional drawers and closets. Mid-ship stairs lead down to the four guest staterooms located just off the foyer equipped with laundry facilities. Below one will find two VIP cabins with king berths and two guest cabins with twin berths. Each stateroom is elegantly decorated and has an ensuite head with enclosed shower. All décor and mattresses are new. From the formal foyer one will go up a spiral set of stairs to the upper landing that will take one aft to the sky lounge or forward to the pilothouse. The pilothouse has raised semi-circular seating for all guests to enjoy the view while cruising, updated navigation equipment, captain's office and communications. There are very nice walk-around side decks with pilothouse entry doors, and a staircase centerline going forward down to the foredeck where there is a circular seating area (nook) with excellent visibility while cruising.

Aft from the upper landing one will pass a day toilet and enter the sky lounge where you will find a roomy area with lots of light, bar with bar stools, L-shaped settee and comfortable seating with ottomans. This is a beautiful area for entertaining or watching movies on a large HDTV that swings out for better viewing on the settee. Going aft from the sky lounge through a large sliding door one will enter the upper aft deck to find an L-shaped settee with chairs and table for dining. To starboard are steps leading from the aft deck to the upper deck. Forward of that is a 6-8 person Jacuzzi hot tub. From this area one can go up a set of stairs to the sundeck or walk forward either side on the walk-around side decks. One can reach the boat deck from this area as well. The sundeck features a large bar with four stools that is covered with the custom hardtop, two built-in seating areas forward with storage under, two beautiful teak tables, wet bar, drink refrigerator, large barbeque and a large sun area with adjustable chaise lounges. One can also enter the main salon through double doors from the beautiful and spacious aft deck that features a large teak circular table that seats eight guests and built-in settee with table and occasional

chairs to port and starboard that can also be used at the table or the settee area. There is a full walk-behind bar to port and forward equipped with refrigerator, ice maker and storage for drinks and serving. The bar has 3 bar stools and large TV behind. All is protected by the aft deck overhang. From the aft deck one can go up to the upper deck and sky lounge. From the aft deck one can go down a set of stairs either side to a large swim platform that makes for easy access to the water for swimming or water sports. The aft deck also gives one access to the passerelle for easy access to shore and to the walk around deck forward.

Machinery

MAIN ENGINES Engine Type: MTU Engine Hours: Port: 5430 hours, Stbd: 5416 hours
Gearboxes for Main Engines: ZF Marine **SPEED/CONSUMPTION PER HOURS/RANGE/RPM**
Maximum: 25 knots, 230 @ 2100 rpm Cruising: 19 knots, 175 @ 1800 rpm Economical: 13 knots,
65 @ 1250 rpm **GENERATORS & ELECTRICITY** Output: 65 kW Generators: 2X Northern Lights
generators - Port: 2790 hrs.; Stbd: 2830 hrs. Generator Fuel consumption: 6 gal/hr under full load
each Shore Power: 480 30 100 amp or 208/240 30 100 amp (has ASEA 25 converters)
BATTERIES Batteries: Lifeline Main Engine Starting: Lifeline Generator Starting: Lifeline **AIR**
CONDITIONING Type: Aqua Air 20 ton system **OTHER MACHINERY** Watermakers: 2X Aqua
Whisper Sea Recovery Trim Tabs/Stabilizers: NIAD Zero Speeds Bow Thruster: New, 75 hours
Steering System: Jastram Steering System Fuel Separator & Filtration: Alpha Laval fuel polisher
(also fuel transfer pump with filter) Sewage System: Headhunter UDCG Type II MSD Fresh water
Filtration: N/A Lube Oil Capacity: 75 gallon Waste Oil Capacity: 33 gallon

Communications and Navigation

COMMUNICATION SYSTEMS SATcom: KVH Tracphone Fleet 33 Telephone System: PBX
Panasonic SSB: ICOM M802 VHF: ICOM M602 Cellular Phone System: Panasonic PBX
Intercom: ICOM **NAVIGATION SYSTEMS** Radars: Furuno RCU 014 Gynocompass: Simrad
RCG 12 Magnetic Compass: Ritchie Auto Pilot: Simrad Depth Sounder: B&G/Furuno GPS:
Furuno GP150 Ships Computer: Tramsas Wind/Speed Log: B&G Navtex: yes

Entertainment

VIDEO EQUIPMENT All new HD TV's with iPad Mini Apple TV **AUDIO EQUIPMENT** All new
AV with iPad Mini Controls

Galley and Laundry

MAIN GALLEY EQUIPMENT Cooking Equipment: Miele/Gaggenau Dishwasher: Miele **CREW**
GALLEY/MESS EQUIPMENT Cooking Equipment: 6 X Induction Gaggenau burners
Refrigeration/Freezer: Sub Zero **ADDITIONAL GALLEY EQUIPMENT** Cooking Equipment: 7

Miele ovens and 7 Miele steamers Refrigeration/Freezer: Traulsen refrigerator and freezer
LAUNDRY EQUIPMENT: Main Laundry Equipment: 1X Miele Professional washing machine (PW6065) 1X Miele Professional dryer (PT7136 Plus) **CREW MESS:** 1X Miele Professional washing machine 1X Miele Professional dryer (PT7136 Plus)

Tenders and Toys

Tenders: 17' Nautica 2008 Recreation: 2X SeaDoos 2008 Other: 1X Kayak

Deck Equipment

Anchor Windlass: Maxwell Aft Warping Capstans: Maxwell Anchors: 2X Stainless, New Anchor chain: 450/500 ft. Boat Crane and Davits: Nautical Structures Passerelle: Bensenzoni

Safety & Fire Protection

SECURITY EQUIPMENT CCTV System: Yes Cameras: 5X aft; 2X side; master aft; engine room Monitors: 1X bridge **SAFETY EQUIPMENT** Life Rafts: 1X 16 passenger/ 2X 8 passengers/Zodiac Life Rings: 4 EPIRBs: 1 Medical Equipment: Yes

Refit Fall 2013

Machinery Spaces

- New Naiad Zero Speed stabilizers with touch screen controls
- Upgraded bow thruster to 75HP providing 40% more thrust
- Complete rebuild on both Northern Lights 65kw generators
- Installed PTO on port generator
- Added storage racks above main engines
- Added 6 Ocean LED Underwater lights
- Added 2nd Glendinning Cablemaster shore power reel
- New 480V 100Amp shore power cable
- New In-line Spot Zero water softener
- Added new air handlers throughout guest and crew accommodations

Electronics

- New KVH TracPhone V7-IP Broadband
- New KVH HD11 antenna for HDTV
- Complete new Audio/Video system
- All new HD televisions in guest and crew accommodation areas
- Two Kaleidescape Blue-Ray and DVD movie servers
- Apple integrated Crestron system with ten iPad remotes
- New GPS in pilothouse
- New matrix switcher for integrated bridge control
- New Wave WIFI router for internet with upgraded antenna
- New Carlisle and Finch Spotlight with FLIR
- New Nobletec secondary Nav system

Exterior Decks

- Custom Hardtop on sundeck with custom lighting
- Teak decking on boat deck stairs and fly bridge
- New BBQ on sundeck
- New teak tables on sundeck with custom up/down- in/out
- New refrigerators/ice makers on exterior spaces
- New (2) Stainless anchors
- New anchor plates
- Additional Anchor chain to make 400' and 450' of chain respectively
- New teak decking on swim platform
- Custom stainless/acrylic gates on Aft Deck
- New acrylic wing doors on boat deck
- Custom stainless life raft holder on port side

- New LED Nav lights with additional tow lights/ NUC lights
- Addition of extra stainless middle rails to all exterior railings
- New exterior Granite on aft deck/ sundeck bar areas
- Complete annual bottom job in Oct 2013
- Reinforced swim platform cleats for tender towing
- Added fresh water fill line from swim platform
- Rebuilt components in fly-bridge compartment
- New exterior cushions and covers

Interior Decks

- Complete new Interior, wall coverings, furniture, soft goods
- Complete refurbish on crew quarters
- New galley appliances/ cooktop
- New galley counters – Silestone
- New LED overhead lighting throughout
- New commercial Ice maker in Lazzerette
- New V-Kool on all windows
- 2 new wine fridges in sky lounge bar
- Converted Master/Port King bed to hinged opening
- New serving extension in Galley

Broker Comments

TRISARA is the newest Westport 130' to hit the market and is very much worth presenting to your clients who are interested in a quality vessel that has just undergone an exceptional upgrade to the tune of nearly 2 million dollars including in part a new beautiful décor throughout with all new furnishings, fabrics, carpet, linens, overhead, wall covering and much more. In addition to her interior upgrade she has had new zero stabilizers and bow thruster installed, all new HD TVs, audio visual and iPad controls. TRISARA is the perfect turnkey 130' that is ready for charter or private use at a moment's notice. Don't miss the opportunity to see what a spectacular yacht TRISARA truly is. Please note: Name Reserved

Exclusions

Owner's personal belongings.

Disclaimer

The Company offers the details of this vessel or yacht in good faith but cannot guarantee or warrant the accuracy of this information nor warrant the condition of the vessel. A buyer should instruct his representatives, agents, or his surveyors, to investigate such details as the buyer desires validated. This vessel or yacht is offered subject to prior sale, price change, or withdrawal without notice.

PHOTOS

Main Salon



Main Salon



Main Salon



Galley



Galley



Master Stateroom



His and Her Master Bath



King Guest - 1



Guest Bath



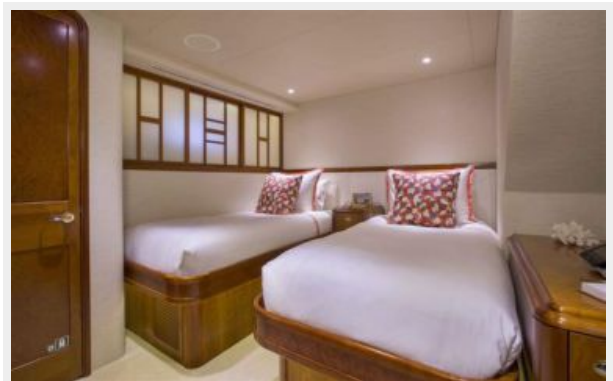
King Guest - 2



Guest Bath



Twin Guest



Twin Guest



Guest Bath



Aft Main Deck



Pilothouse



Sky Lounge



Upper Aft Deck



Jacuzzi Hot Tub



Sun Deck



Bow View



Sun Deck



Running



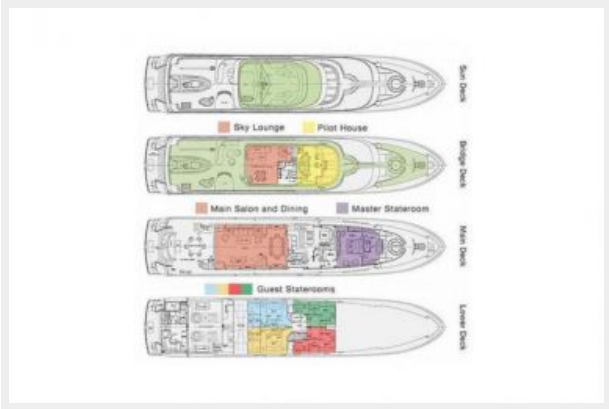
Aerial View



Aerial View



Layout



CONTACTS

Andrey Shestakov, leading yacht broker of the sales department of Shestakov Yacht Sales Inc. Shestakov Yacht Sales Inc., the official representative of the Miami/Fort Lauderdale FL headquarters.

Contact details

Email:
andrey@shestakovyachtsales.com

Web: shestakovyachtsales.com/en/

Telephones

USA: **+1(954)274-4435**

Office hours

Monday – Saturday: **9:00 - 21:00 EDT**

Sunday: **closed**

Address



Harbour Towne Marina, 850 NE 3rd St,
STE 213, Dania, FL 33004