

KEEP ON PUSHIN — CARVER



Судостроитель: CARVER

Год постройки: 2003

Модель: Моторная яхта

Цена: **ЦЕНА ЯХТЫ ПО ЗАПРОСУ**

Местонахождение: United States

Длина общая: 57' 9" (17.60m)

Ширина: 15' 4" (4.67m)

Мин. осадка: 4' 8" (1.42m)

Макс. осадка: 4' 9" (1.45m)

Крейс. скорость: 22 Kts. (25 MPH)

Макс. скорость: 28 Kts. (32 MPH)

Купить **KEEP ON PUSHIN — CARVER** а также выбрать подходящую вам яхту из нашего каталога яхт вам поможет опытный яхтенный брокер Андрей Шестаков. На сегодняшний день компания **Shestakov Yacht Sales Inc.** имеет большое количество яхт в собственном списке продаж, а также тесно сотрудничает со всеми крупными яхтенными производителями по всему миру.

Для того чтобы купить яхту **KEEP ON PUSHIN — CARVER** а также проконсультироваться по любому вопросу связанному с покупкой, продажей, чартером яхт позвоните по телефону **+7(918)465-66-44**.

ОГЛАВЛЕНИЕ

ОГЛАВЛЕНИЕ	2
ХАРАКТЕРИСТИКИ	6
Основная информация	6
Размеры	6
Скорость, вместимость и масса	6
Размещение	7
Корпус и палуба	7
Информация о двигателе	7
ПОДРОБНОЕ ОПИСАНИЕ	8
Walkthrough	8
Salon	8
Galley	9
Pilothouse	9
Companionway	10
Master Cabin	10
Guest Cabin	11
Guest Head	11
VIP Cabin	12
Foredeck	12
Cockpit	12
Flybridge Deck Equipment	13
Hardtop Equipment	13
Boat Deck	13
Helm Equipment	13
Engine Room	13
Electrical	14
Remarks	14
Exclusions	14

Исключения	15
Отказ от ответственности	15
ФОТОГРАФИИ	16
Salon Looking Forward	16
Salon Bar	16
Portside Salon Settee	16
Starboard Side Salon Settee	16
Salon Looking Aft	16
Salon Entertainment Center	16
Breakfast Bar	17
Galley	17
Galley	17
Galley	17
Galley	17
Pilothouse	17
Helm	18
Helm	18
Camera Monitor	18
Radar Plotter	18
Helm	18
Pilothouse Settee	18
Steps to the Flybridge	19
Pilothouse TV	19
Companionway Steps	19
Companionway Art Niche	19
Master Cabin Looking Aft	19
Master Cabin Berth	19
Master Cabin Bureau	20
Master Cabin Storage	20

Master Cabin Laundry	20
Master Cabin Vanity	20
Master Cabin Head	20
Master Cabin Tub	20
Master Cabin Shower	21
Guest Cabin	21
Guest Head	21
VIP Cabin	21
VIP Cabin	21
Bow Area	21
Anchor Detail	22
Bow Sun Pad	22
Bow	22
Nice Shine!	22
Aft Deck	22
Aft Deck Seating	22
Swim Platform	23
Flybridge Settee	23
Flybridge Swivel Seat	23
Flybridge Starboard Side Seat	23
Flybridge Bar	23
Flybridge Refrigerator	23
Flybridge Jenn Air Grill	24
Cat Tender	24
Flybridge Helm	24
Flybridge Helm	24
Flybridge Radar	24
Flybridge Raymarine Equipment	24
Flybridge Volvo Controls	25

Flybridge VHF's	25
Wireless Yacht Controller	25
Port Engine	25
Starboard Engine	25
Behind Starboard Engine	25
Behind Port Engine	26
Kholer Generator	26
AC System	26
Iso Boost Transformer	26
Nighttime	26
Profile	26
КОНТАКТЫ	27
Контактная информация	27
Телефоны	27
Время работы	27
Адрес	27

ХАРАКТЕРИСТИКИ

Основная информация

Тип судна: Моторная яхта	Подкатегория: Pilothouse
Модельный год: 2003	Год постройки: 2003
Страна: United States	Верх: Hardtop
Открытая палуба мостика: Да	Кубрик: Да

Размеры

Длина общая: 57' 9" (17.60m)	Длина по ватерлинии: 53' 9" (16.38m)
Длина палубы: 57' 0" (17.37m)	Ширина: 15' 4" (4.67m)
Мин. осадка: 4' 8" (1.42m)	Макс. осадка: 4' 9" (1.45m)
Длина привального бруса: 59' 2" (18.03m)	

Скорость, вместимость и масса

Крейс. скорость: 22 Kts. (25 MPH)	Крейсерская скорость поворота: 2000 Kts.
Дальность на крейсерской скорости: 325	Макс. скорость: 28 Kts. (32 MPH)
	Макс. скорость поворота: 2300 Kts.
Водоизмещение: 54000 Pounds	Чистый вес: 26 Pounds
Вместимость воды: 200 Gallons	Вместимость сточного бака: 100 Gallons
Объем топливного бака: 800 Gallons	

Размещение

Всего кают: 3	Всего кок: 4
Спальные места: 6	Всего ком. состава: 2

Корпус и палуба

Материал корпуса: Fiberglass	Материал палубы: Fiberglass
Комплектация корпуса: Semi Vee	Цвет корпуса: white
Отделка корпуса: Plastic	Дизайнер корпуса: Carver Yachts
Дизайнер экстерьера: Carver Yachts	Дизайнер интерьера: Carver Yachts

Информация о двигателе

Двигатели: 2	Производитель: Volvo
Модель: D-12	Тип двигателя: Inboard
Тип топлива: Diesel	

ПОДРОБНОЕ ОПИСАНИЕ

Walkthrough

Entrance to the yacht is via the side decks of the Cockpit area or from a floating dock, the swim platform and in through the hinged transom door.

The Cockpit offers ladder access to the Boat Deck, three portable upholstered deck chairs and a large hatch in the sole to access the Engine Room and Lazarette.

The Salon has a sleeper sofa to port and an L shaped settee to starboard.

The Galley is next forward to port and has a bi level countertop with two stools and a small counter that serves as a breakfast bar. The Galley is fully equipped and has a black granite countertops and matching tiled sole.

To starboard is the entertainment electronics, steps to the very spacious Pilothouse and a side door to the starboard side deck.

The Pilothouse has a centerline helm, electrically adjustable helm seat, a wraparound electronic console and seating for five in a portside settee.

Further down the steps to starboard is the Master Cabin to port with a queen size berth, open vanity, enclosed head and tub shower and the yacht's laundry center.

To starboard is the Day or Guest Head. To port is an over/under Cabin to sleep two. All the way forward is the VIP Cabin with a centerline double berth.

Salon

Entering to the Salon is from the curved Trend stainless steel sliding door with full drapes for privacy.

Immediately upon entering to port is a curved bar cabinet occupying the space of the older tube TV. Two cabinet doors below offer additional storage.

Next forward is a three person settee (new 2013) that easily converts to sleep two futon style. Behind the settee is a 46" newly installed Panasonic TV with a Bose center channel speaker affixed above.

Outboard is the large four panel side house windows covered with custom fit wood mini blinds. A soffit above has four halogen mini spots.

To starboard is an L shaped settee to set up to five people with three incliners for footrests.

A drop leaf coffee table with a burl wood inlay sits in front of the settee upon a contrasting throw rug.

Outboard are matching windows, mini blinds and soffit lights to those on the portside.

Next forward is a built in end table with a burl wood top enclosing the Bose subwoofer and two open fiddled shelves. A small table lamp sits above.

Next forward is the Salon's entertainment center including a Denon integrated network AV/receiver and a Sony six disc DVD/CD changer.

A two door storage cabinet is below. Next forward is the DC electrical panel with a water gauge and C Inverter controller within. Across to port is the AC electric panel at the steps up to the Pilothouse.

Also in the Salon is a Bose 5.1 mini cube speaker system, digital AC controls, eleven halogen mini spots and a carpet sole.

Galley

The Galley is next forward to port and open to the Salon aft.

The upgraded bi level granite countertop has a lower section and two newly recovered barstools to serve perfectly as a breakfast bar.

The Galley itself is J shaped and contains the following equipment:

Black Galaxy granite countertops Black Galaxy granite tile sole Under mount Corian sinks
Removable spray faucet Sharp Carousel Grill 2 convection microwave Built in Black & Decker
Space Maker coffeemaker Princess Ceran top 3 burner cook top Exhaust fan above cook top (2)
Halogen work lights above cook top GE Nautilus full size dishwasher Sub Zero under counter
refrigerator w/cherry front Sub Zero under counter freezer w/cherry front & icemaker (8) Cherry
cabinet doors (1) Cherry cabinet w/(3) large storage drawers within (5) Cherry drawers (6)
Overhead halogen mini spots GFCI outlets Central vacuum outlet below sink

Pilothouse

The expansive Pilothouse might be considered as the best seat in the house.

To starboard is a sliding door to the side deck, centerline aft are five carpeted steps to the Flybridge and to port is a wraparound settee to seat four to five people.

The helm is centerline with a wraparound lower console and centerline upper console.

Above are six halogen mini spots, a 12 volt light and a smoke alarm.

Newly installed to starboard is a 42" Samsung wall mounted TV to give all the benefits of the Sky Lounge model without giving up the lower helm for resale value.

Pilothouse Equipment:

7" Color Voyager monitor for cameras Raymarine 72 mile color RL 80C radar Raymarine color RC 631 plotter/depth finder Bilge pump controls Wiper controls Windlass controls Raymarine handset type VHF w/remote speaker (2) Horizon RAM mics from Flybridge VHF's Raymarine Tridata speed/depth/temp Volvo bow/stern thruster integrated controls ITT Jabsco searchlight controls Tilt leather wrapped helm wheel Trim tab controls Volvo electronic engine controls Volvo alarm panels Raymarine Raypilot autopilot w/wireless remote Volvo Penta LCD engine gauge package Full analog engine gauges Analog rudder angle indicator Aetna digital tachometers w/hour meter Analog engine synchronizer Fireboy engine shutdown override panel Raymarine joy steering joystick at helm chair Electrically adjustable black Ultra Leather helm chair Fireboy manual fire system pull cable (2) Bose cube mini speakers

Companionway

On the starboard side from the Pilothouse there are five curved carpet steps with step lights leading below. Halfway down is a niche with an opening stainless steel porthole.

At the bottom of the steps is a sliding pocket door entrance to the Master Cabin, a Guest Head across the Companionway, a small lighted bookshelf and the entrance to the Guest Cabin to port and all the way forward is the VIP.

Master Cabin

The Master Cabin has the popular athwartship queen size berth to starboard flanked by two burled top nightstands with stereo speakers within.

Above the berth upholstered headboard are two opening stainless steel portholes behind cherry mini blinds with a cherry soffit and two halogen lights above.

A mirrored section of the overhead is furthest outboard over the berth. There are twin reading lights, a Panasonic AM/FM/cassette/5 CD changer and a JVC 12 volt AM/FM/CD/DVD player facing the berth from forward along with a few shelf cherry cabinets.

Going further forward is a five drawer cherry bureau with two soffit lights above.

Aft of the berth is a burl wood countertop with three drawers and a large cabinet below.

Next inboard is a cedar lined two door hanging locker with pullout hanging and ample storage within.

At the foot of the berth starting aft is a full size cabinet concealing a separate Malber washer and Malber dryer. The open vanity, up one step, facing the berth is next forward.

The centerline vanity has an Avonite countertop with an under mount Corian sink, a two tone fixture above and below are two curved cherry doors.

Above is a mirror centerline and fore and aft medicine cabinets. A holding tank indicator panel is located in this area.

Aft of the vanity is the door to the Head compartment with a Vacuufush toilet, AC vent, lights and exhaust fan. Forward is the tub shower compartment which is greatly enhanced over older models by not having the tube TV intrude into the space.

The shower fixture has a full body spray (eight nozzles) and handheld or wall mounted fixture and a “Rain” fixture.

There is also a lighted opening obscured glass stainless steel porthole and an exhaust fan.

Next forward is a 26” Panasonic LCD TV built into the wall and a full size cedar lined auto lit hanging locker with a dressing mirror within.

Also in this cabin are eight overhead mini spots, a CO detector and a digital AC controller.

Guest Cabin

The Guest Cabin is just forward of the Master and has two over/under bunks that run fore and aft. There is a storage drawer below the lower bunk and an opening stainless steel porthole above the upper bunk. Each bunk has a reading light.

A small nightstand serves the lower bunk. Inboard and forward is a cedar lined hanging locker shared with the VIP Cabin.

Also in this cabin is a CO monitor and a carpeted sole.

Guest Head

Across the Companionway is the Guest Head shared by the VIP with its second access door. The curved front vanity has two cherry cabinets below and an Avonite countertop above with a Corian sink, two tone fixture and a mirrored medicine cabinet above. Two LED lights from a soffit above provide excellent illumination. The toilet is a Vacuufush model. There is a holding tank indicator panel in this area.

The stall shower has a bi fold clear glass door, a seat, a full body eight nozzle spray, a handheld or wall mounted fixture and a “Rain” type shower head. There is also an obscured glass opening stainless steel porthole, a light and an exhaust fan. Two additional lights and an AC vent are in

the Head.

VIP Cabin

The VIP Cabin has a centerline tapered queen size berth with two drawers below facing aft.

The three panel mirrored headboard has two reading lights and an overhead round deck hatch for ventilation and emergency escape.

Port and starboard shelves have full drapes above concealing the two opening stainless steel portholes both port and starboard. Twin wood shelves below serve as nightstands port and starboard. Carpeted steps give easy access to the berth.

A small hanging locker with shelves within is aft to starboard just outboard of the Head access door.

To port is a Panasonic 15" LCD TV and a JVC 12 volt AM/FM/CD/DVD player over the closet door that shares the locker with the Guest Cabin.

Also in this cabin are digital AC controls, a CO detector and six overhead mini spots.

Foredeck

Nonskid fiberglass decks Portholes/hatches for ventilation Stainless steel anchor davit w/bow roller Removable Sunbrella sun pad cushions w/black Sunbrella cover (3) Windshield wipers/washers Sliding starboard side Pilothouse door Rocna 88 lb. anchor 250' 3/8" Chain Maxwell 3500 windlass w/chain gypsy Up/down footswitches for windlass (2) Under deck fender lockers White Textulene windshield cover White Textulene side window covers (4) Spring line cleats Welded stainless steel bow rail w/double life line from midship forward Bomar round deck hatch over VIP berth Dual electric trumpet horns Freshwater wash down International Navigation lights Stainless steel handrails on house sides (2) Large stainless steel fender baskets Stainless steel bow pennant staff ITT Jabsco remote control searchlight, new 2012

Cockpit

Fiberglass nonskid deck (4) Courtesy Cockpit lights (7) Fiberglass steps w/stainless steel handrail to Boat Deck Molded 65 sq. ft. Integral nonskid swim platform Hidden stainless steel folding swim ladder Hinged transom door Cockpit coaming bolsters (2) Lockers on transom exterior for hoses/cords (2) Pioneer stereo speakers overhead Large fiberglass access hatch to Engine Room on gas shocks Hot & cold shower on swim platform (2) Halogen aft facing lights (2) GFCI 110V outlets Stainless steel handrail Freshwater wash down spigot Aft facing camera 70' Square foot Cockpit Cable TV inlet & cord PAR dockside water inlet (2) Overhead DC lights (blue) (6) Place overhead rod/boat hook storage

Flybridge Deck Equipment

Fiberglass nonskid deck L Shaped settee w/removable cushions, cover & storage below
Pedestal mounted oval table at settee Electrically adjustable fiberglass two person seat swivels
forward or aft Fiberglass Integral radar arch w/hardtop Bar unit to starboard w/sink, Jenn Air grill
under hinged aluminum hinged top Novacool refrigerator behind hinged door below bar (4)
Pioneer stereo speakers Cabinet to access Flybridge AC system GFCI outlet Ocean Signal
EPIRB (9) Overhead DC lights on hardtop Digital AC controls Hinged stainless gate to Boat
Deck 4 Side black Sunbrella trimmed enclosure panels w/(6) U Zips

Hardtop Equipment

KVH Tracphone Inmarsat Sat dome (not in service) KVH Tracvision G4 Sat TV antenna 4' Open
array Raymarine radar antenna (2) 8' VHF antenna Hailer horn GPS antenna Bomar deck hatch

Boat Deck

Nautical Structures electric tender davit 600 lb. capacity Courtesy light Rail mount tender cradles
2013 DUX 9'8" Catamaran tender w/Suzuki 20 HP 4 stroke electric start motor

Helm Equipment

Upholstered swivel helm seat Wireless "Yacht Controller" (12K) (new 2011) Raymarine RL 70C
color radar (72 mile) Raymarine L 760 color plotter/sounder Raymarine ST 8002 autopilot w/knob
course change feature Raymarine ST 60 Tridata Raymarine handset VHF w/remote speaker
Raymarine ST 600R corded autopilot remote (2) Standard Horizon Spectrum VHF Analog
engine gauges Analog rudder angle indicator Attna digital tachometers w/hour meters Visual
synchronizer Tilt leather helm wheel 12 Volt accessory outlet ITT Jabsco searchlight control (2)
Volvo LCD engine panels for engine functions Volvo electronic clutch & throttle controls Volvo
alarm panels (2) Fuel tank gauges Bilge pump switch Trim tab controls 5" Ritchie magnetic
compass Voyager color Engine Room & stern camera Volvo integrated bow & stern thruster
control Handrail at steps Key start switches Windlass controls

Engine Room

X Gallon Seaward hot water heater (new 2014) Vacuuflush toilet system Racor 900 filter/water
separator for main engines w/vacuum gauges DC Engine Room blowers Oil X Changer oil pump
for engines & generator Coolant recovery bottles for Volvos Coolant recovery bottles for
generator 2 1/2" Stainless steel Aquamet shafts 29 x 32 4 Blade main propellers Perko sea
strainers ZF 311A 1.759 to 1 transmission ratio Hydro cell water accumulator tank Bennett
hydraulic trim tabs Dockside water inlet & pressure regulator (3) Rule 2000 bilge pumps w/auto

float switches Fireboy FE 241 105 lb. fixed fire suppression system Sanitary Y valves in forward Engine Room Aluminized foam rubber sound deadening insulation Sanitary vent loop Shure Flow 12 volt demand water pump (3 gallon per minute) 5 Step Marquipt Tide Ride ladder DC Engine Room lights Aqualift generator muffler Racor Spin On fuel filter for generator (new 2014) (1) 48,000 BTU Cruise Air compressor (1) 24,000 BTU Cruise Air compressor Dripless shaft seals Basins & showers drain into grey water tank under cabin sole Central vacuum Seastar hydraulic steering system High water alarm system Engine Room CCTV Volvo stern thruster, new 12/2013

Electrical

12/24 Volt DC system 110V/220 Volt AC system 22 KW Kohler generator in sound shield 1638 hours Charles Industries Iso Boost 50 amp transformer (6) Perko battery switches C Charger 60 amp 24 volt charger C Charger 20 amp 12 volt charger Cable TV inlet & cord Battery parallel switch Charles IQ 2600 Quasine Wave inverter/charger Marineco 50 amp 220 volt power inlet at bow Glendinning 50 amp 220 volt cable reel at transom Electrical bonding system Galvanic isolator/zinc saver (1) 12 Volt battery for generator (new 2014) (Group 27) (4) 8D Batteries (new 2014) four house & thruster power (4) 8D batteries (new 2014) for engine starting (2 port, 2 starboard) Engine Room electrical panel w/(12) breaker protected circuits (4) 12 Volt batteries for 24 volt bow thruster system Main Salon DC electrical panel w/analog volt meter Main Salon DC electrical panel w/(48) breaker protected circuits Main Salon AC electrical panel w/digital volt & amp meter Main Salon 120V electrical panel w/(28) breaker protected circuits Main Salon 240V electrical panel w/(8) breaker protected circuits Bow/stern 220V inlet selector at main panel Alarm system w/fire, high water, intrusion & motion detectors, set to call owner's cell phone

Remarks

KEEP ON PUSHIN represents one of the best equipped 57' Carver available. Highlights include: hardtop, bridge AC, bow and stern thruster, granite Galley appointments, new large TV's and a 2013 tender stored on the Boat Deck.

When the current owner was searching for a boat he wanted one with all the above options. He then added the wireless "Yacht Controller" (12K) and a new tender.

KEEP ON PUSHIN is immaculate, recently serviced and ready for her next owner!

Exclusions

While every effort was made to list all pertinent included equipment aboard KEEP ON PUSHIN, there are some personal belongings aboard. Prospective purchasers should assume any item not specifically mentioned herein will not convey at closing.

Исключения

При продаже яхты исключаются личные вещи владельца.

Отказ от ответственности

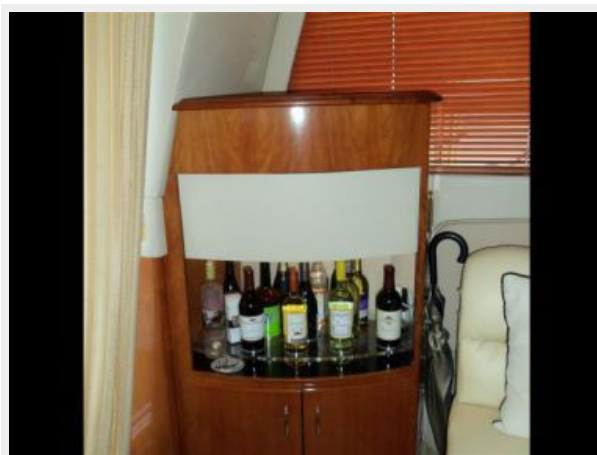
Компания предоставляет описание судна или яхты добросовестно, но не может гарантировать точность этой информации, а также не ручается за техническое состояние. Покупатель должен проинструктировать своих агентов или оценщиков исследовать представленную информацию более подробно, по собственному желанию. Продажа судна или яхты, изменение цены или снятие с продажи будет происходить без предварительного уведомления.

ФОТОГРАФИИ

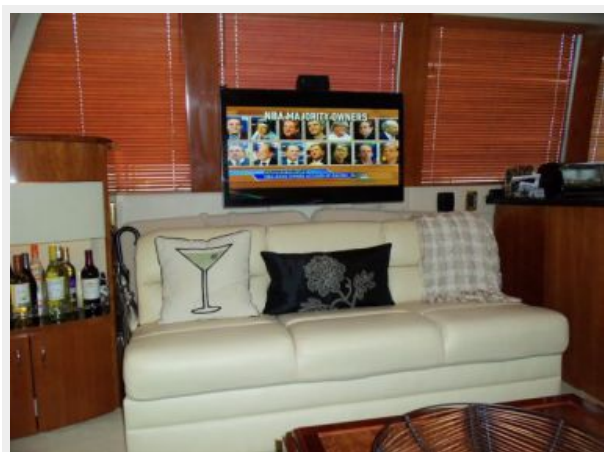
Salon Looking Forward



Salon Bar



Portside Salon Settee



Starboard Side Salon Settee

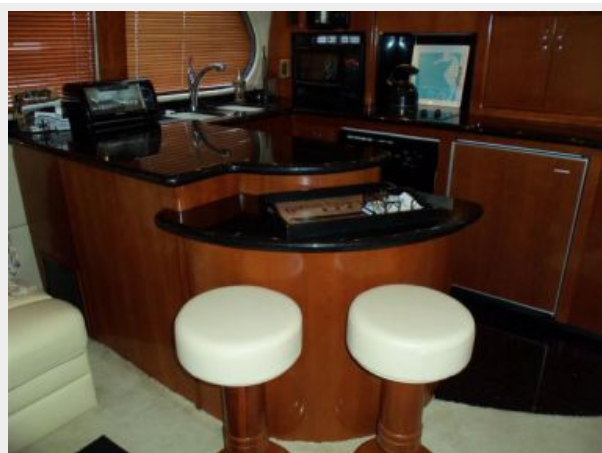


Salon Looking Aft

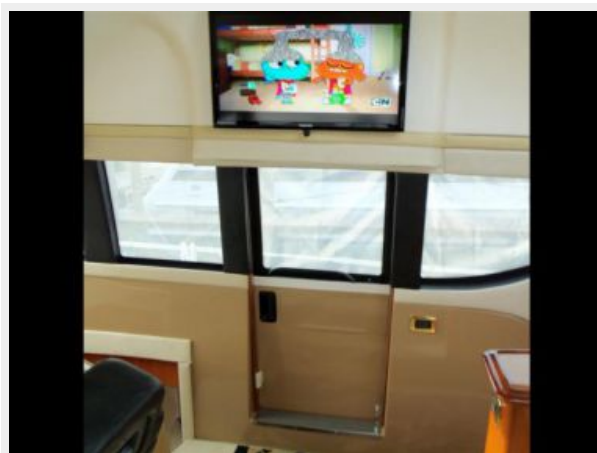
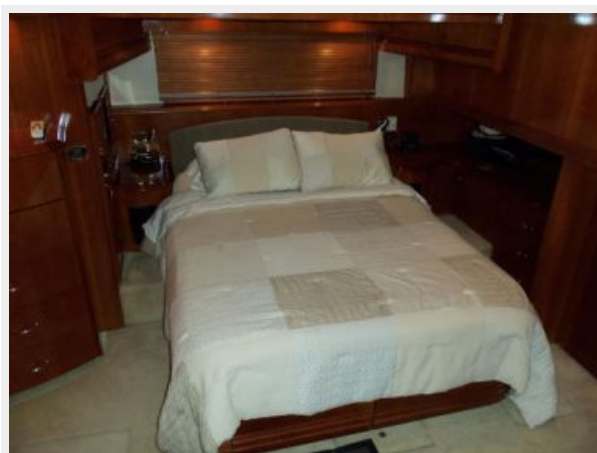


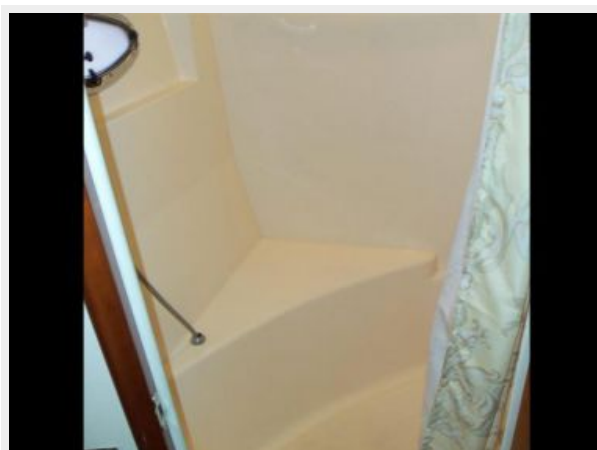
Salon Entertainment Center

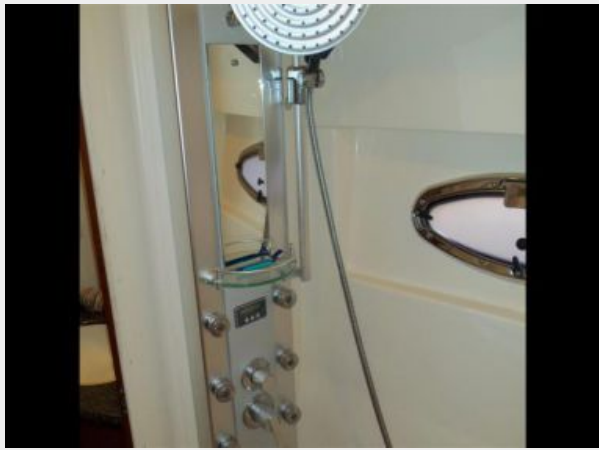
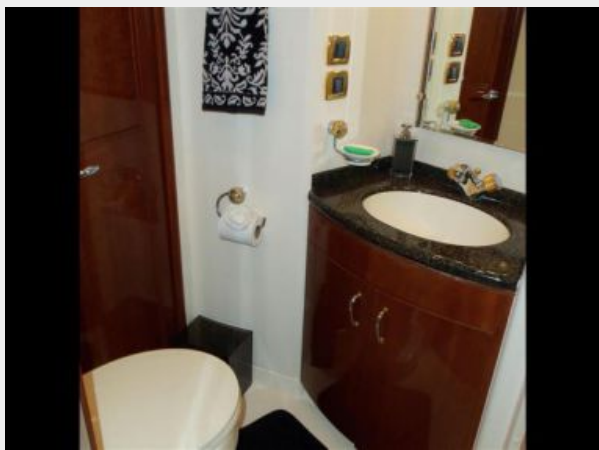


Breakfast Bar**Galley****Galley****Galley****Galley****Pilothouse**

Helm**Helm****Camera Monitor****Radar Plotter****Helm****Pilothouse Settee**

Steps to the Flybridge**Pilothouse TV****Companionway Steps****Companionway Art Niche****Master Cabin Looking Aft****Master Cabin Berth**

Master Cabin Bureau**Master Cabin Storage****Master Cabin Laundry****Master Cabin Vanity****Master Cabin Head****Master Cabin Tub**

Master Cabin Shower**Guest Cabin****Guest Head****VIP Cabin****VIP Cabin****Bow Area**

Anchor Detail



Bow Sun Pad



Bow



Nice Shine!



Aft Deck



Aft Deck Seating



Swim Platform**Flybridge Settee****Flybridge Swivel Seat****Flybridge Starboard Side Seat****Flybridge Bar****Flybridge Refrigerator**

Flybridge Jenn Air Grill**Cat Tender****Flybridge Helm****Flybridge Helm****Flybridge Radar****Flybridge Raymarine Equipment**

Flybridge Volvo Controls**Flybridge VHF's****Wireless Yacht Controller****Port Engine****Starboard Engine****Behind Starboard Engine**

Behind Port Engine**Kholer Generator****AC System****Iso Boost Transformer****Nighttime****Profile**

КОНТАКТЫ

Андрей Шестаков (Andrey Shestakov) – ведущий яхтенный брокер отдела продаж яхт и судов компании Shestakov Yacht Sales Inc. Официальный представитель Shestakov Yacht Sales Inc. для русскоговорящих клиентов в центральном офисе компании в Майами/Форт Лодердейл/Флорида/США.

Контактная информация

Email: **andrey@shestakovyachtsales.com**

Web: **shestakovyachtsales.com**

Телефоны

Краснодарский край: **+7(918)465-66-44**

США, Майами, Флорида: **+1(954)274-4435**

Время работы

Понедельник – Суббота: **9:00 - 21:00**
EDT

Воскресенье: **Закрыто**

Адрес



Harbour Towne Marina, 850 NE 3rd St,
STE 213, Dania, FL 33004