

## NO NAME — HATTERAS



**Builder:** HATTERAS

**Year Built:** 2009

**Model:** Motor Yacht

**Price:** PRICE ON APPLICATION

**Location:** Puerto Rico

**LOA:** 60' 0" (18.29m)

**Beam:** 19' 0" (5.79m)

**Max Draft:** 4' 9" (1.45m)

Our experienced yacht broker, Andrey Shestakov, will help you choose and buy a yacht that best suits your needs **No Name — HATTERAS** from our catalogue. Presently, at Shestakov Yacht Sales Inc., we have a wide variety of yachts available on our sale's list. We also work in close contact with all the big yacht manufacturers from all over the world.

If you would like to buy a yacht **No Name — HATTERAS** or would like help answering any questions concerning purchasing, selling or chartering a yacht, please call **+1(954)274-4435**

# TABLE OF CONTENTS

TABLE OF CONTENTS	2
SPECIFICATIONS	4
Basic Information	4
Dimensions	4
Speed, Capacities and Weight	4
Accommodations	4
Hull and Deck Information	4
Engine Information	5
DETAILED INFORMATION	6
Description	6
Standard Equipment	6
Additional Options	8
Exclusions	9
Disclaimer	9
PHOTOS	10
Galley	10
Salon	10
Salon Sofa	10
Salon Dinette	10
Salon TV	10
Salon Ice maker	10
Owner's Statroom	11
Owner's Head Vanity	11
Owner's Head Shower	11
VIP Stateroom	11
VIP TV	11
Guest Head Vanity	12
VIP Head Vanity	12

---

Third Stateroom	12
Fourth Stateroom	12
Guest Head	12
Washer and Dryer	12
Flybridge Console	13
Flybridge Console	13
Overhead Flip Down Instrument Pod	13
Flybridge Freezer	13
Flybridge Companion Lounge	13
Overhead Teaser Reels	13
Cockpit and Tower Photo	14
1 of 2 Cockpit Fish Lockers	14
Bow Photo at Sunset	14
Starboard Engine Cat C32Acert	14
Port Engine Cat C32Acert	14
Generator 1	15
Generator 2	15
CONTACTS	16
Contact details	16
Telephones	16
Office hours	16
Address	16

---

# SPECIFICATIONS

---

## Basic Information

---

**Category:** Motor Yacht

**Sub Category:** Convertible

**Model Year:** 2009

**Year Built:** 2009

**Country:** Puerto Rico

## Dimensions

---

**LOA:** 60' 0" (18.29m)

**Beam:** 19' 0" (5.79m)

**Max Draft:** 4' 9" (1.45m)

**MFG Length:** 59' 10" (18.24m)

## Speed, Capacities and Weight

---

**Displacement:** 90000 Pounds

**Water Capacity:** 200 Gallons

**Fuel Capacity:** 1800 Gallons

## Accommodations

---

**Total Cabins:** 4

**Total Berths:** 8

**Total Heads:** 3

## Hull and Deck Information

---

**Hull Material:** Fiberglass

---

## Engine Information

---

**Engines:** 2

**Manufacturer:** Caterpillar

**Model:** C32Acert

**Engine Type:** Inboard

**Fuel Type:** Diesel

---

# DETAILED INFORMATION

---

## Description

---

The Hatteras 60 Convertible features a mezzanine cockpit, lightweight construction, tumblehome curvature in the hullsides and an exciting tournament edition option. This model also features tumblehome in the hullsides and a completely resin-infused hull, rather than one built up of layers of hand-laid fiberglass. The automated resin-infusion process produces a more uniform hull thickness from one hull to the next, as well as the most ideal glass-to-resin ratio. This one-two punch produces a boat that weighs significantly less because of the lowered resin content, while providing a more precise fit of bulkheads, stringers and other components for increased strength and durability. This yacht has the GT packate engine upgrade to 1,800 hp, custom hull color and a wraparound windshield styling element. The 60 Convertible features a luxurious salon with a comfortable L-shaped sofa with rod storage beneath, as well as an entertainment center with 42-inch plasma TV. Genuine wood veneers in either a high-gloss or satin finish provide a warm environment, complemented perfectly by the custom décor scheme from Hatteras' in-house design team. To provide convenience for the crew, the electrical distribution panel is located just inside the sliding door, easily accessed from the cockpit. The galley features two under-counter Sub-Zero refrigerator/freezer units. A four-burner ceramic cooktop and microwave/convection oven provide plenty of food preparation options, while deep storage drawers in the galley's fascia offer an abundance of space. Amtico strip flooring and solid-surface countertops and backsplashes give the galley an elegant look with long-lasting durability. To starboard, a large dinette features an L-shaped lounge with storage underneath. The dining table features a solid-surface top with decorative pedestal. Belowdecks, this 60 is configured with four staterooms and three private heads, providing for ample room for the rugged sportfishing enthusiast as well as the cruiser. This yacht has the value added interior amenities four-stateroom layout.

## Standard Equipment

---

- Engines: CAT C-32Acert 1800 BHP
- Beam: 19'
- Fresh Water: 200 gallons
- Displacement 85,000 lbs.
- Wood. High Gloss Cherry Wood
- Fuel. 1800 gallons
- Draft: 4'9"
- Holding: 100 Gallons
- Layout: 4 SR 3 Heads
- Decor: Custom
- 5 year hull warranty
- Solid fiberglass resin infusion hull bottom

- Hull sides and Superstructure Resin Infused pvc Foam
- Bronze thru hulls
- Pultruded fiberglass ruddar shelf
- Nlbral 7 props High Performance
- 31/2- Alloy 22 propeller shaft\*
- UL approved fue tanks
- Painted hull and superstructure (Awlcraft 2000)
- Polished aluminum welded flybridge and bow rails
- Black braided dock lines and black fenders
- Powder coated side bridge rails
- Stainless steel anchor chute
- Anchor Fortress FX-65
- Anchor Locker Bow Deck
- Rod Storage on Port & Starboard Benches
- Engine room gauge package
- Flybridge DC AM/FM WCD player & speakers
- Sturdy single level electronic controls for pod
- Electronic troll valve control
- Northstar 8000I GPS plotter
- Simrad AP26 Autopilot
- ICOM VHF
- Simrad IS 15 depth and speed
- Flybridge console grab rail
- Set of 4 rod holders
- Quick disconnect seawater/freshwater wash down
- Cockpit molded fiberglass seating
- Engine room door lock
- Two 60" fish boxes with macerator
- Storage under cockpit steps
- AM/FM stereo with CD/DVD
- Salon sectional w/arm style rod storage under loose spring down cushions
- Telephone outlet master stateroom
- Dimmer light – throughout
- Full plexi mirror aft bulkhead, master/bunk room
- Cablemaster with retractable remote cord
- Water manifold bord
- Full 'glass sliding door to salon
- Washer/dryer
- Central vacuum system
- Salon with entertainment center with surround sound stereo, CD/DVD, 42" plasma TV
- Master stateroom wood valance
- Master stateroom stereo w/CD/DVD w/6 disc CD changer
- Amtico flooring In galley
- Amtico flooring In head

- 20' LCD TV in master stateroom
- Icemaker, salon
- Padded panel headliner and wall coverings
- Salon – 1" wood mini blinds, encased
- Under counter drawer style refrigerator/freezer
- Fluted wood cornices - salon air conditioning vents
- Plexi mirror around backsplashes – heads
- (2) queen bunks via hinged gas cylinders with cedar storage
- Decorative dinette pedestal
- 20 throw pillows
- Bowed wood base head cabinets
- Cockpit cabinets accessed by toe kicks
- Fuel system priming pump
- Voltage stabilizer boost transformers (2)
- Painted polyurethane engine room
- Dual fuel filters
- Transducer well
- Power assist steering
- Prop puller
- Bronze dripless shaft seals
- Bronze dripless rudder seals
- Macerator pump on holding tank
- Stainless Steel threshold in salon
- Cockpit stereo w/volume control
- Wood base boards in heads
- Oil change system engines, generator, gears
- DC low level lighting under berths/heads/salon
- Stainless steel hawser
- Bow stateroom upper hull side cabinets, port and stbd w/a/c vented thru fluted valances
- Air compressor
- Onan Quiet series 20.5 kw generators (two with optional generator)
- Sea chest
- Tinted glass side windows

---

## Additional Options

- Second Onan Quiet series 20.5 kw generator
- PipeWelders Full Tower
- PipeWelders Outriggers
- Center Rigger
- Camera in Cockpit
- Outrigger Mounted Camera
- Satellite TV



- Satellite Telephone
- Eskimo Ice Machine
- Flybridge Freezer in Forward Lounge
- Cockpit Freezer
- Cockpit Refrigerator
- Release Teak Helm Chair
- Release Teak Fighting Chair
- Engine up charge, net: C32A Cats 1800HP
- Radar Furuno 72nm open array radar.
- Two displays VEI 15inch
- Sounder video Furuno BBFF3
- Transducer Furuno
- Processor Furuno MFDBB Nav 3D
- Gps Garmin 5215 plotter
- Two microphone Icom Command HMM162B
- Two VHF radios Icom M506
- EPIRB ACR Globalfix 406 Cat
- Searchlight remote ACR RCL100
- Sat TV KVMM7 GLA Control
- Sat phone KVH Tracphone-252
- Camara Oceanview Fish
- Watermaker rev osmosis MAXQ
- Icemaker Eskimo 600lb
- Plotter Furuno Mf D8AVNET 3D
- Murray Large Tuna Chair
- Murray Flying Bridge Chair
- Murray Tounament 3 spreader outriggers
- Two teaser reels US9
- Simrad Auto Pilto

---

## Exclusions

Owner's personal belongings.

---

## Disclaimer

The Company offers the details of this vessel or yacht in good faith but cannot guarantee or warrant the accuracy of this information nor warrant the condition of the vessel. A buyer should instruct his representatives, agents, or his surveyors, to investigate such details as the buyer desires validated. This vessel or yacht is offered subject to prior sale, price change, or withdrawal without notice.

# PHOTOS

Salon



Galley



Salon Sofa



Salon Dinette



Salon TV



Salon Icemaker



**Owner's Statroom**



**Owner's Head Vanity**



**Owner's Head Shower**



**VIP Stateroom**



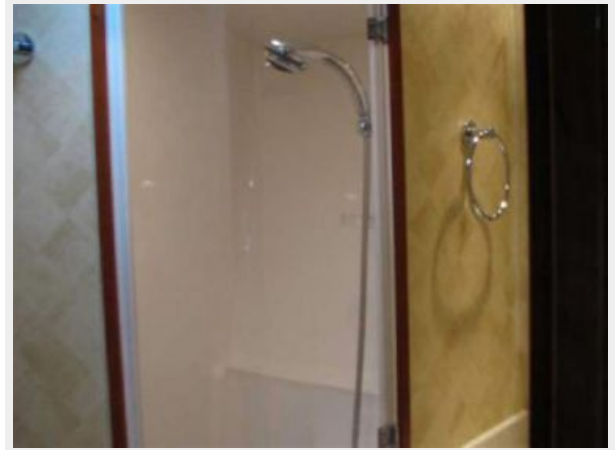
**VIP TV**



**Guest Head Vanity**



**VIP Head Vanity**



**Third Stateroom**



**Fourth Stateroom**



**Guest Head**



**Washer and Dryer**





**Flybridge Console**



**Flybridge Console**



**Overhead Flip Down Instrument Pod**



**Flybridge Freezer**



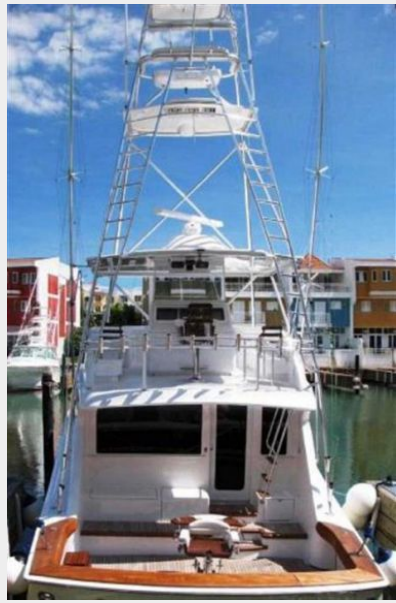
**Flybridge Companion Lounge**



**Overhead Teaser Reels**



**Cockpit and Tower Photo**



**1 of 2 Cockpit Fish Lockers**



**Bow Photo at Sunset**



**Starboard Engine Cat C32Acert**



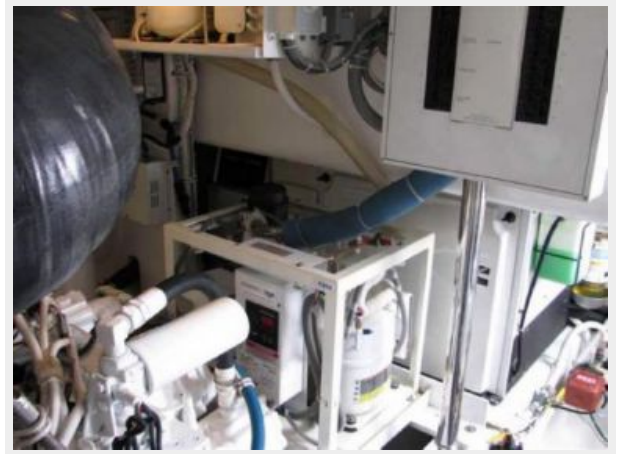
**Port Engine Cat C32Acert**



**Generator 1**



**Generator 2**



---

# CONTACTS

---

Andrey Shestakov, leading yacht broker of the sales department of Shestakov Yacht Sales Inc. Shestakov Yacht Sales Inc., the official representative of the Miami/Fort Lauderdale FL headquarters.

---

## Contact details

---

Email: [andrey@shestakovyachtsales.com](mailto:andrey@shestakovyachtsales.com)

Web: [shestakovyachtsales.com/en/](http://shestakovyachtsales.com/en/)

---

## Telephones

---

USA: +1(954)274-4435

---

## Office hours

---

Monday – Saturday: **9:00 - 21:00** EDT

Sunday: **closed**

---

## Address

---



Harbour Towne Marina, 850 NE 3rd St,  
STE 213, Dania, FL 33004