

39FT 1971 C&C FIBERGLASS 39 — C&C YACHTS



Builder: C&C YACHTS

Year Built: 1971

Model: Sloop

Price: PRICE ON APPLICATION

Location: United States

LOA: 39' 0" (11.89m)

Beam: 11' 6" (3.51m)

Max Draft: 6' 3" (1.91m)

Our experienced yacht broker, Andrey Shestakov, will help you choose and buy a yacht that best suits your needs 39ft 1971 C&C Fiberglass 39 — C&C YACHTS from our catalogue. Presently, at Shestakov Yacht Sales Inc., we have a wide variety of yachts available on our sale's list. We also work in close contact with all the big yacht manufacturers from all over the world.

If you would like to buy a yacht 39ft 1971 C&C Fiberglass 39 — C&C YACHTS or would like help answering any questions concerning purchasing, selling or chartering a yacht, please call +1(954)274-4435

TABLE OF CONTENTS

TABLE OF CONTENTS	2
SPECIFICATIONS	3
Basic Information	3
Dimensions	3
Speed, Capacities and Weight	3
Accommodations	3
Hull and Deck Information	3
Engine Information	3
DETAILED INFORMATION	4
Galley	4
Tankage	4
Accommodations	4
Additional Information	4
Exclusions	6
Disclaimer	6
PHOTOS	7
CONTACTS	19
Contact details	19
Telephones	19
Office hours	19
Address	19

SPECIFICATIONS

Basic Information

Category: Sloop

Sub Category: Cruising/Racing Sailboat

Model Year: 1971

Year Built: 1971

Country: United States

Dimensions

LOA: 39' 0" (11.89m)

LWL: 31' 8" (9.65m)

Beam: 11' 6" (3.51m)

Max Draft: 6' 3" (1.91m)

Speed, Capacities and Weight

Displacement: 17000 Pounds

Accommodations

Total Berths: 6

Total Heads: 1

Hull and Deck Information

Hull Material: Fiberglass

Engine Information

Engines: 1

Manufacturer: Yanmar

Engine Type: Inboard

Fuel Type: Diesel

DETAILED INFORMATION

Galley

- U shape
- Sink with fresh and salt water foot pumps and fresh pressure water faucet
- Three burner propane stove with oven
- Large ice box

Tankage

- Fuel Tanks: 49 gallon main tank and 12 gallon secondary tank
- Water Tank: 37 gallon stainless steel
- Holding Tank: 20 gallon fiberglass

Accommodations

- Double aft berth to port
- Single aft berth to starboard
- Single outboard berths amidships port and starboard
- Inboard port berth amidships convertible to twin size
- Inboard single berth amidships starboard
- Head is forward to port
- Ample bow storage for sails, lines, anchor etc.
- Navigation station: Large desk top with hinges

Additional Information

Rig

- Masthead sloop with ProFurl roller furling
- Mast, boom, navtec rod rigging, and internal halyards were all new in 2000
- Inner forestay and running back stays
- 10 Barent winches
- Mechanical back stay tension adjuster
- Snatch blocks of various sizes

Sails

- Slab reefing (2 reef points) main sail with cover
- 150% roller furling genoa

- 100% roller furling jib
- Hank on Storm jib (attaches to inner forestay)
- Storm trysail (runs on separate track on mast)
- 1.5 oz Spinnaker with sleeve
- Sheets and other control lines also included
- Spinnaker pole mounted on mast
- ProFurl roller furling
- Sails were replaced in 2000 and repaired by manufacturer in 2011
- Standing rigging and running rigging are in excellent condition
- New lifelines and stanchions in 2011

Electronics

- Garmin GPS 128
- Danforth Constellation Compass (rebuilt in 2011)
- RayMarine Autopilot ST6002
- JRC Radar/Chartplotter 1800
- Handheld Garmin GPS 72
- JVC 4 Speaker Stereo
- 2 85 Watt Solar Panels with controller
- Xantrex 450 Watt Power Inverter
- Xantrex 20 amp TrueCharge battery charger
- RayMarine ST40 depthfinder
- ICOM N4025 VHF
- Watermaker - Spectra Ventura 150(Sold Separately)
- Single Sideband radio - ICOM IC-706 Mk II (Sold Separately)
- Pactor Modem- runs the Pactor III protocol (Sold Separately)

Other Extras

- Bimini with side curtains
- New dodger in 2011
- Propane cabin heaters
- Custom stainless steel boarding/swim ladder
- Maxwell 1200 windlass
- High pressure wash down pump
- New Rocna 20KG anchor with 150 ft. of 5/16 Hi tensile chain and 200 ft. of 5/8 nylon
- 6 person life raft - Switlik offshore model (Sold Separately)
- Hull painted in 2011
- Porta-Bote 10ft folding dinghy
- Garhauer outboard motor hoist
- 6 HP Yamaha outboard for tender (Sold Separately)
- Monitor Self Steering Windvane (Sold Separately)

Exclusions

Owner's personal belongings.

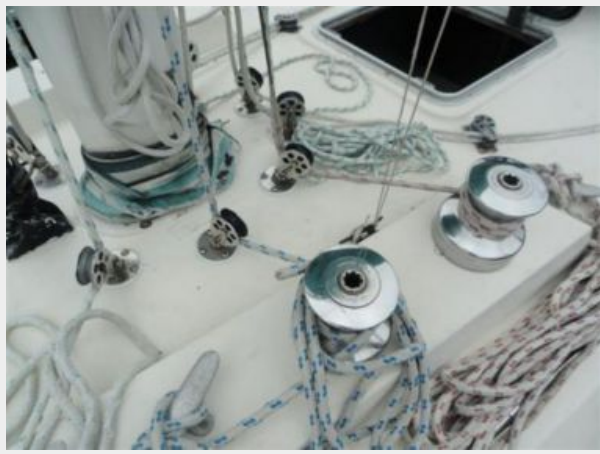
Disclaimer

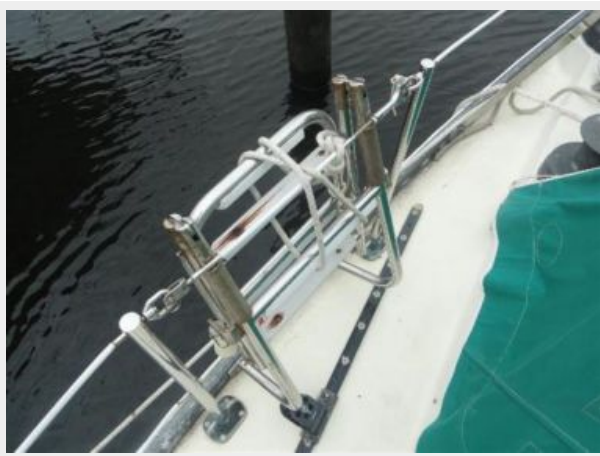
The Company offers the details of this vessel or yacht in good faith but cannot guarantee or warrant the accuracy of this information nor warrant the condition of the vessel. A buyer should instruct his representatives, agents, or his surveyors, to investigate such details as the buyer desires validated. This vessel or yacht is offered subject to prior sale, price change, or withdrawal without notice.

PHOTOS

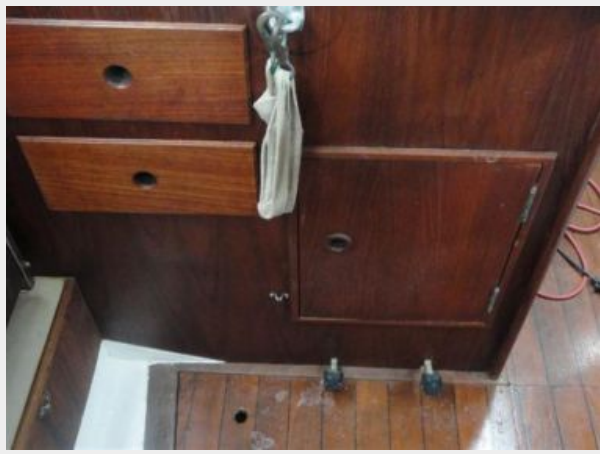




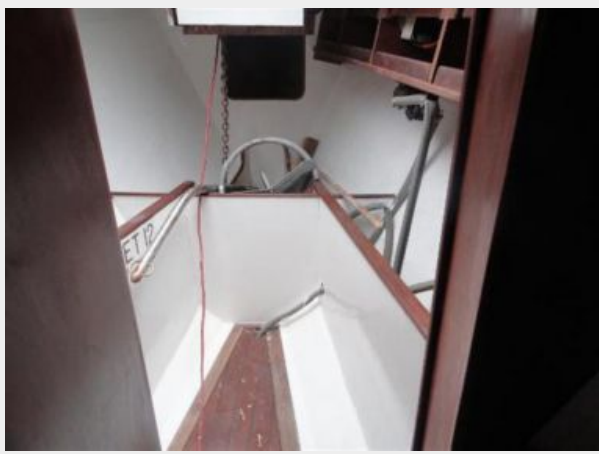
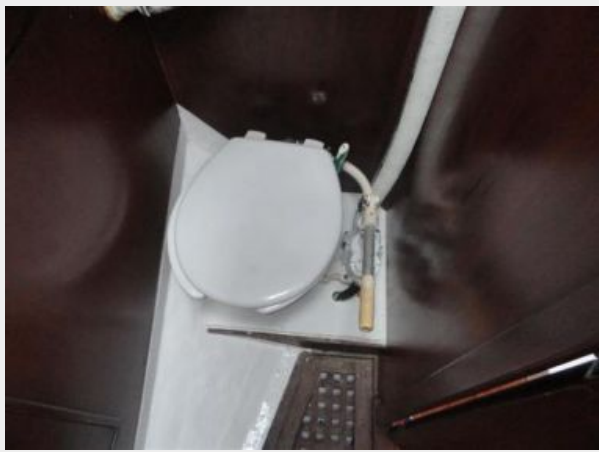






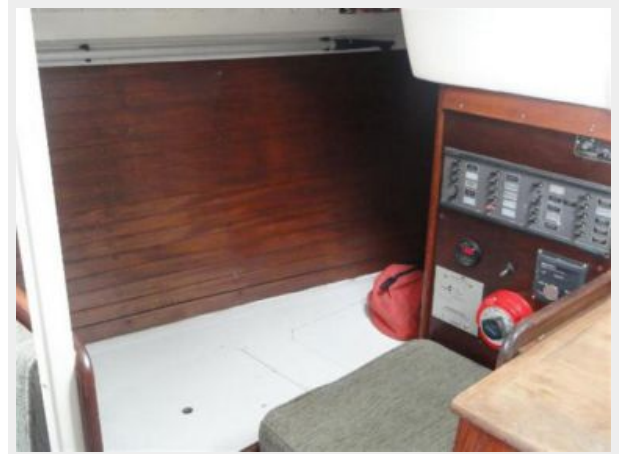














CONTACTS

Andrey Shestakov, leading yacht broker of the sales department of Shestakov Yacht Sales Inc. Shestakov Yacht Sales Inc., the official representative of the Miami/Fort Lauderdale FL headquarters.

Contact details

Email: andrey@shestakovyachtsales.com

Web: shestakovyachtsales.com/en/

Telephones

USA: +1(954)274-4435

Office hours

Monday – Saturday: **9:00 - 21:00** EDT

Sunday: **closed**

Address



Harbour Towne Marina, 850 NE 3rd St,
STE 213, Dania, FL 33004