

NO NAME — LANPHERE



Builder: LANPHERE

Year Built: 1980

Model: Sport Fisherman

Price: PRICE ON APPLICATION

Location: United States

LOA: 75' 0" (22.86m)

Beam: 19' 1" (5.82m)

Min Draft: 8' 0" (2.44m)

Cruise Speed: 12 Kts. (14 MPH)

Max Speed: 14 Kts. (16 MPH)

Our experienced yacht broker, Andrey Shestakov, will help you choose and buy a yacht that best suits your needs **No Name — LANPHERE** from our catalogue. Presently, at Shestakov Yacht Sales Inc., we have a wide variety of yachts available on our sale's list. We also work in close contact with all the big yacht manufacturers from all over the world.

If you would like to buy a yacht **No Name — LANPHERE** or would like help answering any questions concerning purchasing, selling or chartering a yacht, please call **+1(954)274-4435**

TABLE OF CONTENTS

TABLE OF CONTENTS	2
SPECIFICATIONS	5
Overview	5
Basic Information	5
Dimensions	5
Speed, Capacities and Weight	5
Accommodations	6
Hull and Deck Information	6
Engine Information	6
DETAILED INFORMATION	7
Accommodations	7
Aft Deck	7
Audio & Visual Equipment	8
Captains Quarters	8
Deck Equipment	8
Electrical Equipment	8
Electronics	8
Fishing Equipment	8
Galley	8
Mechanical	8
Tenders	9
Exclusions	9
Disclaimer	9
PHOTOS	10
Starboard aft side	10
Port side	10
Starboard side	10
Salon port side	10

Salon looking forward	10
Salon port side	10
Salon port side looking forward	11
Salon port side looking forward	11
Salon port side looking aft	11
Salon looking aft	11
Galley starboard side looking forward from salon	11
Wheel house looking forward	11
Wheel house looking forward	12
Wheel house looking aft	12
Stairwell leading from wheel house to salon	12
Stairwell from salon to wheel house	12
Galley looking aft	12
Galley	12
Galley	13
Hallway looking aft towards salon	13
Stateroom	13
Stateroom	13
Hallway looking aft	14
Stateroom	14
Stateroom	14
Stateroom	14
Head	15
Stateroom	15
Stateroom	15
Stateroom	15
Head	16
Stateroom	16
Stateroom	16

Hallway from salon leading to staterooms	16
Galley	16
Starboard salon	16
Wheel house bridge	17
Wheel house starboard side	17
Hallway looking forward	17
Port side salon	17
Bow looking aft	18
Forward bow deck	18
CONTACTS	19
Contact details	19
Telephones	19
Office hours	19
Address	19

SPECIFICATIONS

Overview

1980 75' Lanphere Sport Yacht, twin Detroit 12V71's, two new Kohler 20KW generators, 4 staterooms 3 head/shower, plus Captain quarters, sleeps 10, over 250 square feet of fishing cockpit, enclosed wheel house with full flybridge and Marlin station, 12' Novurania tender bow deck mounted with crane. Refit in 2012. This yacht is well established in the Key West Charter Fishing industry. Come to tropical Key West and live the dream!

Basic Information

Category: Sport Fisherman

Model Year: 1984

Year Built: 1980

Refit Year: 2012

Country: United States

Vessel Top: Enclosed Pilothouse

Fly Bridge: Yes

Dimensions

LOA: 75' 0" (22.86m)

LWL: 75' 0" (22.86m)

Beam: 19' 1" (5.82m)

Min Draft: 8' 0" (2.44m)

Speed, Capacities and Weight

Cruise Speed: 12 Kts. (14 MPH)

Cruise Speed RPM: 1100 Kts.

Cruise Speed Range: 700

Max Speed: 14 Kts. (16 MPH)

Max Speed RPM: 1300 Kts.

Displacement: 200000 Pounds

Water Capacity: 500 Gallons

Fuel Capacity: 3000 Gallons

Accommodations

Total Cabins: 4

Total Berths: 10

Sleeps: 10

Total Heads: 4

Captain Cabin: True

Hull and Deck Information

Hull Material: Fiberglass Over Wood

Deck Material: Fiberglass

Hull Configuration: Planing

Hull Color: White

Engine Information

Engines: 2

Manufacturer: Detroit Diesel

Model: 12V71

Engine Type: Inboard

Fuel Type: Diesel

DETAILED INFORMATION

Accommodations

Total of four staterooms, two staterooms with two single bunks, two staterooms with queen beds each. Three Head/Showers Captain's quarter with Head/Shower Large salon with Bamboo flooring Window curtains Tinted windows Two couches and one recliner in main salon

WALK THRU The Lanphere is a great boat with real ocean capability. She was built in Seattle, Washington with the Bering Sea in mind. Boarding is easily accomplished by wide gunwales stepping onto a full beam (250 sq ft) aft cockpit deck, with four deck chairs complete with rod gimbals, custom fold away canvas Bimini, tackle station, separate entry to the engine room, and separate entry into the main salon. Enter the salon, bamboo deck with two couches to port, recliner to starboard along with a circular stairwell leading to the wheel house, forward is (starboard side) galley with full size stove/oven, refrigerator/freezer, deep double sink, dishwasher, 60" large screen TV on forward port bulkhead, moving forward down stairwell leads to hallway with four staterooms, two with bunk beds and two with queen beds and three heads/showers. Taking the circular stairwell up from the main salon leads to the large air conditioned wheelhouse, three captains chairs behind the bridge, sleeper sofa starboard side and a separate head/ shower on the aft port side of the wheelhouse. Center of the wheel house is a large chart table with storage below. The bridge is well spread out with navigational aids, electronics, and a captain's chair in-between two lookout/ navigator chairs. Starboard of the bridge is a door leading out to a lookout area/Portuguese bridge which wraps around in front of the bridge and back into the wheel house via a door on the port side. Aft bulkhead in the wheelhouse has a door leading outside where there is a helm station on port side, and on the starboard side a ladder leading up to the fly bridge and upper helm station, complete with navigational electronics and a aluminum framed canvas top. Access to the bow deck is accomplished by walking from the aft cockpit on the port or starboard gunwales. The forward bow deck has the ship's tender and crane, forward is a deck hatch leading to the anchor locker. Forward of the hatch is a windlass, spare anchor and mount, bow pulpit with anchor.

1980 75' Lanphere Sport Yacht, 80' overall length, twin Detroit 12V71's, new (2) 20kw Kohler generators, 4 staterooms sleep ten owners and guests. She is fully customized and specially equipped for sport fishing and long range charter fishing trips, she was refurbished in 2012. This yacht was custom built specifically for the Bering Sea conditions. She comes complete with all custom rods/reels, tackle, 12' Novurania tender, ready to go fishing condition. This sport fisherman is an established contender in the sport fishing (customized) charter industry. Come to tropical Key West and live the dream in customized charters.

Aft Deck

250 square feet aft deck Four deck chairs with rod gimbals Tackle station

Audio & Visual Equipment

KVH Sat TV Receiver 60" TV in Salon with DVD player 2-32" TV's

Captains Quarters

Captain's quarters in wheel house Head/Shower

Deck Equipment

Plow anchor with 300' chain Fortress Anchor with 340' line Bow Pulpit Folding cockpit awning Bamboo flooring in salon Bow deck crane for tender Fresh and salt water wash downs Docking lights Spreader lights Swim ladder Electric (220) windlass Windshield wipers

Electrical Equipment

16 batteries Battery Charger 50 amp dual bank 2 - Kohler 20KW generators, 700/33 hours respectively (New)

Electronics

Simrad Autopilot Compass Hummingbird depth sounder Furuno 48 mile open array Radar 3 - Furuno Nav-Net Chart Plotter/GPS/Radar Receivers, upper/lower helms and a spare unit Furuno GPS RD-30 lower helm Furuno GPS GP-32 upper helm and lower helm 2 - Icom VHF units

Fishing Equipment

Custom sport fishing rods/reels/tackle Custom 45' Rupp Outriggers Deep drop electrical connections in aft cockpit Livewell Fish box Tackle station Bait freezer Transom door

Galley

Whirlpool dishwasher Clothes washer/dryer Full size Whirlpool side by side refrigerator/freezer Whirlpool stove top with oven Water heater Pressurized water system

Mechanical

5 Marine Air 5,000 BTU reverse cycle air conditioning units 1 60,000 BTU reverse cycle air conditioning unit Bilge blowers (port/starboard) Engine alarms Emergency engine shut down Halon fire extinguishing system Lube oil transfer system 2 - spare propellers Fuel filters Raw

water strainers Hydraulic steering Twin Detroit 12V71 Diesel engines Twin Disc transmissions
Upper, lower, mezzanine helm stations CO2 detectors 700 gallon per day water maker

Tenders

12' Novurania RHIB 50 HP Honda 4 stroke outboard gasoline engine

Exclusions

Owner's personal belongings.

Disclaimer

The Company offers the details of this vessel or yacht in good faith but cannot guarantee or warrant the accuracy of this information nor warrant the condition of the vessel. A buyer should instruct his representatives, agents, or his surveyors, to investigate such details as the buyer desires validated. This vessel or yacht is offered subject to prior sale, price change, or withdrawal without notice.

PHOTOS

Port side



Starboard aft side



Starboard side



Salon port side



Salon looking forward



Salon port side



Salon port side looking forward



Salon port side looking forward



Salon port side looking aft



Salon looking aft



Galley starboard side looking forward from salon



Wheel house looking forward



Wheel house looking forward



Wheel house looking aft



Stairwell leading from wheel house to salon



Stairwell from salon to wheel house



Galley looking aft



Galley



Galley



Hallway looking aft towards salon



Stateroom

Stateroom



Stateroom



Hallway looking aft



Stateroom



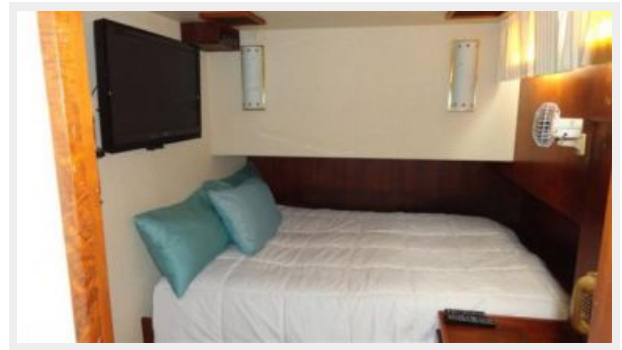
Stateroom



Head



Stateroom



Stateroom



Stateroom



Head



Stateroom



Stateroom



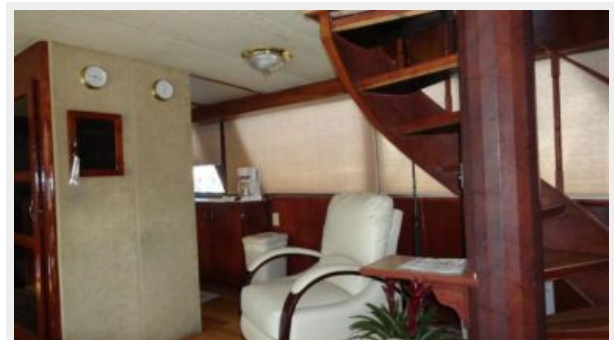
Hallway from salon leading to staterooms



Galley



Starboard salon



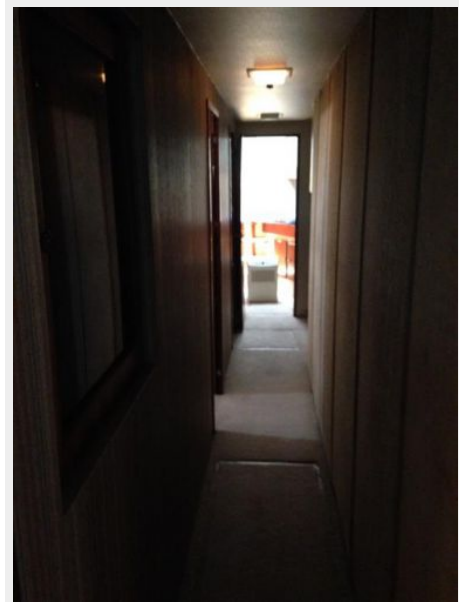
Wheel house bridge



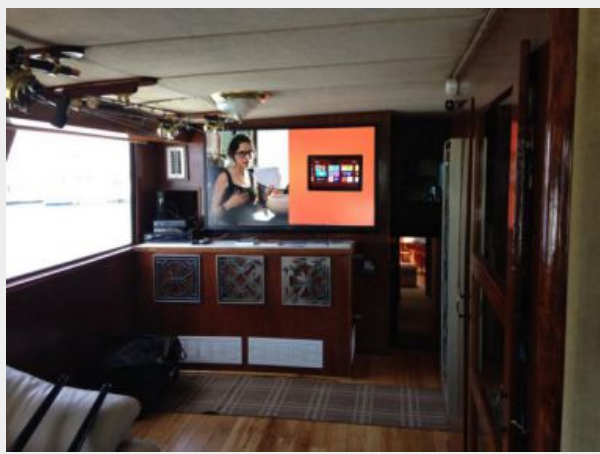
Wheel house starboard side



Hallway looking forward



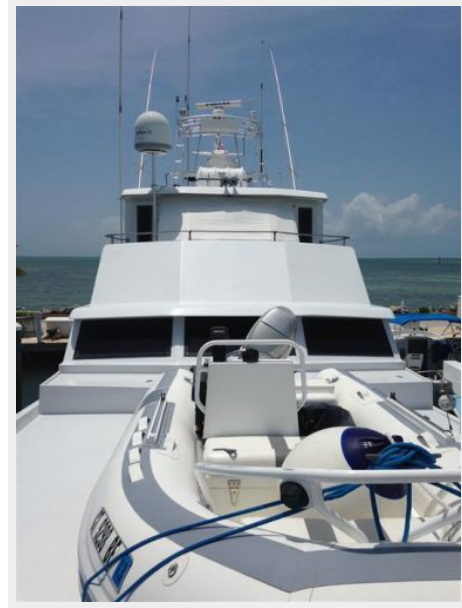
Port side salon



Forward bow deck



Bow looking aft



CONTACTS

Andrey Shestakov, leading yacht broker of the sales department of Shestakov Yacht Sales Inc. Shestakov Yacht Sales Inc., the official representative of the Miami/Fort Lauderdale FL headquarters.

Contact details

Email: andrey@shestakovyachtsales.com

Web: shestakovyachtsales.com/en/

Telephones

USA: +1(954)274-4435

Office hours

Monday – Saturday: **9:00 - 21:00** EDT

Sunday: **closed**

Address



Harbour Towne Marina, 850 NE 3rd St,
STE 213, Dania, FL 33004