

NO NAME — LANPHERE



Судостроитель: LANPHERE

Год постройки: 1980

Модель: Катер для спортивной рыбалки

Цена: **ЦЕНА ЯХТЫ ПО ЗАПРОСУ**

Местонахождение: United States

Длина общая: 75' 0" (22.86m)

Ширина: 19' 1" (5.82m)

Мин. осадка: 8' 0" (2.44m)

Крейс. скорость: 12 Kts. (14 MPH)

Макс. скорость: 14 Kts. (16 MPH)

Купить No Name — LANPHERE а также выбрать подходящую вам яхту из нашего каталога яхт вам поможет опытный яхтенный брокер Андрей Шестаков. На сегодняшний день компания Shestakov Yacht Sales Inc. имеет большое количество яхт в собственном списке продаж, а также тесно сотрудничает со всеми крупными яхтенными производителями по всему миру.

Для того чтобы купить яхту No Name — LANPHERE а также проконсультироваться по любому вопросу связанному с покупкой, продажей, чартером яхт позвоните по телефону **+7(918)465-66-44**.

ОГЛАВЛЕНИЕ

ОГЛАВЛЕНИЕ	2
ХАРАКТЕРИСТИКИ	5
Обзор	5
Основная информация	5
Размеры	5
Скорость, вместимость и масса	5
Размещение	6
Корпус и палуба	6
Информация о двигателе	6
ПОДРОБНОЕ ОПИСАНИЕ	7
Accommodations	7
Aft Deck	7
Audio & Visual Equipment	8
Captains Quarters	8
Deck Equipment	8
Electrical Equipment	8
Electronics	8
Fishing Equipment	8
Galley	8
Mechanical	8
Tenders	9
Исключения	9
Отказ от ответственности	9
ФОТОГРАФИИ	10
Starboard aft side	10
Port side	10
Starboard side	10
Salon port side	10

Salon looking forward	10
Salon port side	10
Salon port side looking forward	11
Salon port side looking forward	11
Salon port side looking aft	11
Salon looking aft	11
Galley starboard side looking forward from salon	11
Wheel house looking forward	11
Wheel house looking forward	12
Wheel house looking aft	12
Stairwell leading from wheel house to salon	12
Stairwell from salon to wheel house	12
Galley looking aft	12
Galley	12
Galley	13
Hallway looking aft towards salon	13
Stateroom	13
Stateroom	13
Hallway looking aft	14
Stateroom	14
Stateroom	14
Stateroom	14
Head	15
Stateroom	15
Stateroom	15
Stateroom	15
Head	16
Stateroom	16
Stateroom	16

Hallway from salon leading to staterooms	16
Galley	16
Starboard salon	16
Wheel house bridge	17
Wheel house starboard side	17
Hallway looking forward	17
Port side salon	17
Bow looking aft	18
Forward bow deck	18
КОНТАКТЫ	19
Контактная информация	19
Телефоны	19
Время работы	19
Адрес	19

ХАРАКТЕРИСТИКИ

Обзор

1980 75' Lanphere Sport Yacht, twin Detroit 12V71's, two new Kohler 20KW generators, 4 staterooms 3 head/shower, plus Captain quarters, sleeps 10, over 250 square feet of fishing cockpit, enclosed wheel house with full flybridge and Marlin station, 12' Novurania tender bow deck mounted with crane. Refit in 2012. This yacht is well established in the Key West Charter Fishing industry. Come to tropical Key West and live the dream!

Основная информация

Тип судна: Катер для спортивной рыбалки

Модельный год: 1984

Год постройки: 1980

Год обновления: 2012

Страна: United States

Верх: Enclosed Pilothouse

Открытая палуба мостика: Да

Размеры

Длина общая: 75' 0" (22.86m)

Длина по ватерлинии: 75' 0" (22.86m)

Ширина: 19' 1" (5.82m)

Мин. осадка: 8' 0" (2.44m)

Скорость, вместимость и масса

Крейс. скорость: 12 Kts. (14 MPH)

Крейсерская скорость поворота: 1100 Kts.

Дальность на крейсерской скорости: 700

Макс. скорость: 14 Kts. (16 MPH)

Макс. скорость поворота: 1300 Kts.

Водоизмещение: 200000 Pounds

Вместимость воды: 500 Gallons

Объем топливного бака: 3000 Gallons

Размещение

Всего кают: 4

Всего коек: 10

Спальные места: 10

Всего ком. состава: 4

Каюта капитана: Да

Корпус и палуба

Материал корпуса: Fiberglass Over Wood Материал палубы: Fiberglass

Комплектация корпуса: Planing

Цвет корпуса: White

Информация о двигателе

Двигатели: 2

Производитель: Detroit Diesel

Модель: 12V71

Тип двигателя: Inboard

Тип топлива: Diesel

ПОДРОБНОЕ ОПИСАНИЕ

Accommodations

Total of four staterooms, two staterooms with two single bunks, two staterooms with queen beds each. Three Head/Showers Captain's quarter with Head/Shower Large salon with Bamboo flooring Window curtains Tinted windows Two couches and one recliner in main salon

WALK THRU The Lanphere is a great boat with real ocean capability. She was built in Seattle, Washington with the Bering Sea in mind. Boarding is easily accomplished by wide gunwales stepping onto a full beam (250 sq ft) aft cockpit deck, with four deck chairs complete with rod gimbals, custom fold away canvas Bimini, tackle station, separate entry to the engine room, and separate entry into the main salon. Enter the salon, bamboo deck with two couches to port, recliner to starboard along with a circular stairwell leading to the wheel house, forward is (starboard side) galley with full size stove/oven, refrigerator/freezer, deep double sink, dishwasher, 60" large screen TV on forward port bulkhead, moving forward down stairwell leads to hallway with four staterooms, two with bunk beds and two with queen beds and three heads/showers. Taking the circular stairwell up from the main salon leads to the large air conditioned wheelhouse, three captains chairs behind the bridge, sleeper sofa starboard side and a separate head/ shower on the aft port side of the wheelhouse. Center of the wheel house is a large chart table with storage below. The bridge is well spread out with navigational aids, electronics, and a captain's chair in-between two lookout/ navigator chairs. Starboard of the bridge is a door leading out to a lookout area/Portuguese bridge which wraps around in front of the bridge and back into the wheel house via a door on the port side. Aft bulkhead in the wheelhouse has a door leading outside where there is a helm station on port side, and on the starboard side a ladder leading up to the fly bridge and upper helm station, complete with navigational electronics and a aluminum framed canvas top. Access to the bow deck is accomplished by walking from the aft cockpit on the port or starboard gunwales. The forward bow deck has the ship's tender and crane, forward is a deck hatch leading to the anchor locker. Forward of the hatch is a windlass, spare anchor and mount, bow pulpit with anchor.

1980 75' Lanphere Sport Yacht, 80' overall length, twin Detroit 12V71's, new (2) 20kw Kohler generators, 4 staterooms sleep ten owners and guests. She is fully customized and specially equipped for sport fishing and long range charter fishing trips, she was refurbished in 2012. This yacht was custom built specifically for the Bering Sea conditions. She comes complete with all custom rods/reels, tackle, 12' Novurania tender, ready to go fishing condition. This sport fisherman is an established contender in the sport fishing (customized) charter industry. Come to tropical Key West and live the dream in customized charters.

Aft Deck

250 square feet aft deck Four deck chairs with rod gimbals Tackle station

Audio & Visual Equipment

KVH Sat TV Receiver 60" TV in Salon with DVD player 2-32" TV's

Captains Quarters

Captain's quarters in wheel house Head/Shower

Deck Equipment

Plow anchor with 300' chain Fortress Anchor with 340' line Bow Pulpit Folding cockpit awning Bamboo flooring in salon Bow deck crane for tender Fresh and salt water wash downs Docking lights Spreader lights Swim ladder Electric (220) windlass Windshield wipers

Electrical Equipment

16 batteries Battery Charger 50 amp dual bank 2 - Kohler 20KW generators, 700/33 hours respectively (New)

Electronics

Simrad Autopilot Compass Hummingbird depth sounder Furuno 48 mile open array Radar 3 - Furuno Nav-Net Chart Plotter/GPS/Radar Receivers, upper/lower helms and a spare unit Furuno GPS RD-30 lower helm Furuno GPS GP-32 upper helm and lower helm 2 - Icom VHF units

Fishing Equipment

Custom sport fishing rods/reels/tackle Custom 45' Rupp Outriggers Deep drop electrical connections in aft cockpit Livewell Fish box Tackle station Bait freezer Transom door

Galley

Whirlpool dishwasher Clothes washer/dryer Full size Whirlpool side by side refrigerator/freezer Whirlpool stove top with oven Water heater Pressurized water system

Mechanical

5 Marine Air 5,000 BTU reverse cycle air conditioning units 1 60,000 BTU reverse cycle air conditioning unit Bilge blowers (port/starboard) Engine alarms Emergency engine shut down Halon fire extinguishing system Lube oil transfer system 2 - spare propellers Fuel filters Raw

water strainers Hydraulic steering Twin Detroit 12V71 Diesel engines Twin Disc transmissions
Upper, lower, mezzanine helm stations CO2 detectors 700 gallon per day water maker

Tenders

12' Novurania RHIB 50 HP Honda 4 stroke outboard gasoline engine

Исключения

При продаже яхты исключаются личные вещи владельца.

Отказ от ответственности

Компания предоставляет описание судна или яхты добросовестно, но не может гарантировать точность этой информации, а также не ручается за техническое состояние. Покупатель должен проинструктировать своих агентов или оценщиков исследовать представленную информацию более подробно, по собственному желанию. Продажа судна или яхты, изменение цены или снятие с продажи будет происходить без предварительного уведомления.

ФОТОГРАФИИ

Port side



Starboard aft side



Starboard side



Salon port side



Salon looking forward



Salon port side



Salon port side looking forward



Salon port side looking forward



Salon port side looking aft



Salon looking aft



Galley starboard side looking forward from salon



Wheel house looking forward



Wheel house looking forward



Wheel house looking aft



Stairwell leading from wheel house to salon



Stairwell from salon to wheel house



Galley looking aft



Galley



Galley



Hallway looking aft towards salon



Stateroom



Stateroom



Stateroom



Hallway looking aft



Stateroom



Stateroom



Head



Stateroom



Stateroom



Stateroom



Head



Stateroom



Stateroom



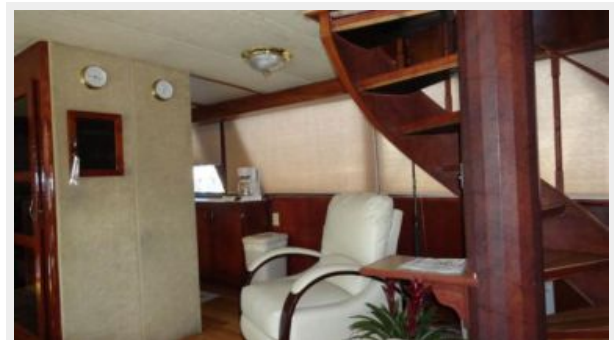
Hallway from salon leading to staterooms



Galley



Starboard salon



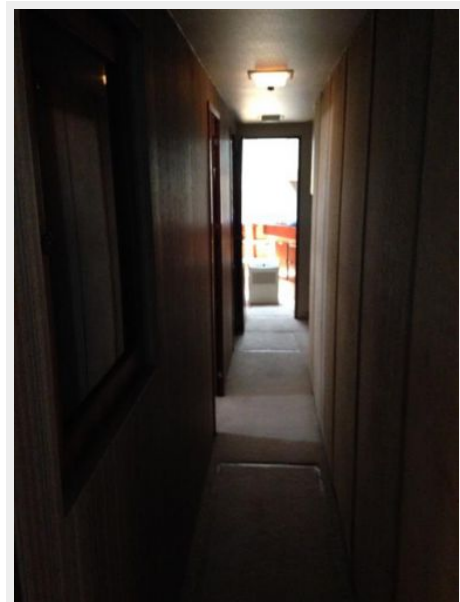
Wheel house bridge



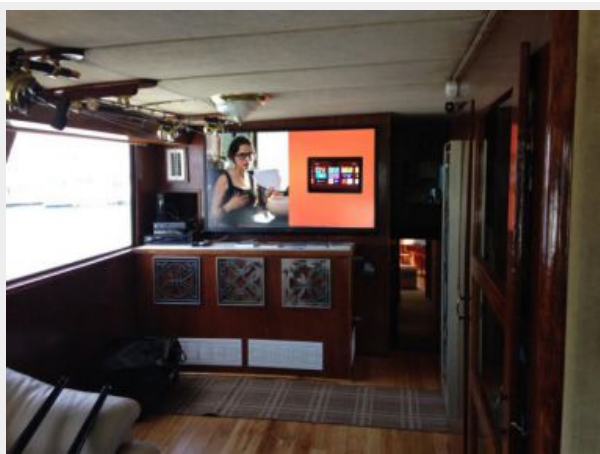
Wheel house starboard side



Hallway looking forward



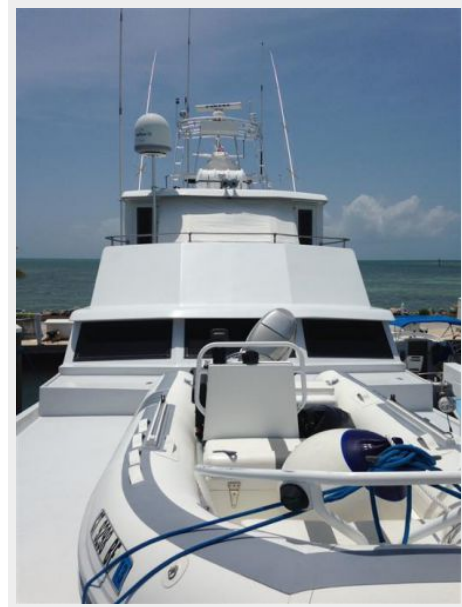
Port side salon



Forward bow deck



Bow looking aft



КОНТАКТЫ

Андрей Шестаков (Andrey Shestakov) – ведущий яхтенный брокер отдела продаж яхт и судов компании Shestakov Yacht Sales Inc. Официальный представитель Shestakov Yacht Sales Inc. для русскоговорящих клиентов в центральном офисе компании в Майами/Форт Лодердейл/Флорида/США.

Контактная информация

Email: andrey@shestakovyachtsales.com

Web: shestakovyachtsales.com

Телефоны

Краснодарский край: **+7(918)465-66-44**

США, Майами, Флорида: **+1(954)274-4435**

Время работы

Понедельник – Суббота: **9:00 - 21:00**
EDT

Воскресенье: **Закрето**

Адрес



Harbour Towne Marina, 850 NE 3rd St,
STE 213, Dania, FL 33004