

BLUE PLANET — JEANNEAU



Builder: JEANNEAU

Year Built: 1997

Model: Cruising Sailboat

Price: PRICE ON APPLICATION

Location: United States

LOA: 37' 0" (11.28m)

Beam: 12' 9" (3.89m)

Min Draft: 6' 2" (1.88m)

Our experienced yacht broker, Andrey Shestakov, will help you choose and buy a yacht that best suits your needs **Blue Planet — JEANNEAU** from our catalogue. Presently, at Shestakov Yacht Sales Inc., we have a wide variety of yachts available on our sale's list. We also work in close contact with all the big yacht manufacturers from all over the world.

If you would like to buy a yacht **Blue Planet — JEANNEAU** or would like help answering any questions concerning purchasing, selling or chartering a yacht, please call **+1(954)274-4435**

TABLE OF CONTENTS

TABLE OF CONTENTS	2
SPECIFICATIONS	5
Overview	5
Basic Information	5
Dimensions	5
Speed, Capacities and Weight	5
Accommodations	5
Hull and Deck Information	6
Engine Information	6
DETAILED INFORMATION	7
Accommodations	7
Galley	7
Sails & Rigging	7
Electronics/Navigation Equipment	8
Deck & Hull	8
Mechanical	9
Electrical Equipment	9
Negotiable Items	9
Exclusions	10
Disclaimer	10
PHOTOS	11
Asymmetrical Gennaker	11
At the Dock	11
Swim Platform	11
Teak Decks in Good Condition	11
In-mast Furling Main	11
Dodger	11
Shaded Cockpit	12

Swim Platform	12
Cockpit Table and Seating	12
Helm	12
Helm Instruments	12
Looking Aft	13
View from Helm	13
Beautiful Interior	13
Nav Desk	13
Great Galley	13
Updated Eno Stove and Oven	13
V-berth	14
Deep Refrigeration	14
Forward Head	14
Roomy Berth	14
Port Aft Cabin	15
Starboard Aft Cabin	15
Aft Head	15
Shades for Hatches	15
Well Maintained Yanmar	16
Good Side Access	16
Mast and Rigging	16
well Organized Running Rigging	17
Z Spars	17
NEW 250 watt Kyosera Solar Panel	17
Anchor Locker	17
Side Decks	18
Electric Windlass	18
Favorite Anchorage!	18
CONTACTS	19

Contact details	19
Telephones	19
Office hours	19
Address	19

SPECIFICATIONS

Overview

Blue Planet is nicely maintained and has a desirable 3 cabin layout. Freshwater vessel has been used for only a few months each year. Good annual maintenance. Upgraded Ultra suede upholstery and nice wood interior. New Kyosera 250 watt solar panel completely runs the refrigeration! In-Mast Main new 2004, Larsen 135 Jib new 2013, Good ground tackle and electric windlass, GPS, Autopilot, Honda generator. Bridge clearance under 50'. Tall interior headroom.

She already knows the way to the Bahamas and is a comfortable cruiser!

Basic Information

Category: Cruising Sailboat

Model Year: 1997

Year Built: 1997

Country: United States

Dimensions

LOA: 37' 0" (11.28m)

LWL: 31' 10" (9.70m)

Beam: 12' 9" (3.89m)

Min Draft: 6' 2" (1.88m)

Speed, Capacities and Weight

Displacement: 13230 Pounds

Water Capacity: 94 Gallons

Holding Tank: 28 Gallons

Fuel Capacity: 38 Gallons

Accommodations

Total Cabins: 3

Total Heads: 2

Hull and Deck Information

Hull Material: Fiberglass

Engine Information

Engines: 1

Manufacturer: Yanmar

Model: 4JH2E

Engine Type: Inboard

Fuel Type: Diesel

DETAILED INFORMATION

Accommodations

Very generous accommodations with a 3 cabin/2 head layout. On either side of the companionway you find 2 private double quarter berths. Updated blue ultrasuede upholstery and warm teak interior joinery make for a very inviting salon. The central salon features a U shaped upholstered settee with drop down dining table and Nav desk to starboard. Opposite to port is a linear galley and aft head. The forward V berth has an ensuite head and shower, drawers and hanging lockers and opening hatch. The entire boat is well ventilated and has abundant natural light.

- Teak and holly sole
- Teak joinery throughout
- U shaped settee, teak table and upholstered bench
- Blue Ultra Suede Upholstery (2008)
- Teak dining table converts to a double berth
- Opening ports and hatches w/ screens
- Roller shades for hatches
- Drapes
- Blue LED lighting in salon
- LED lights in dining area
- Tall headroom 6'3"
- Long berths - (2) 72" long x 60" wide, V is 78" long X 78" at the head
- Clock and barometer
- Stereo and speakers

Galley

Great working galley along the port side opposite the dining table.

- Eno 2 burner gimbaled propane stove and oven (2010)
- 3 5# propane bottles
- solenoid switch
- Isotherm Refrigerator and Freezer (2011) also runs off solar!
- quiet compressor (2011)
- Double SS sink
- Hot/cold pressure water system
- Storage and provisioning cabinets

Sails & Rigging

- In-mast furling Mainsail (2004)
- Goyot roller furling unit
- Larsen 135 Jib (2011) w/sacrificial cover
- Asymmetrical Gennaker
- spinnaker pole
- 44# Harken Primary winches
- Sloop rigged
- Deck stepped
- Aluminum mast and spars
- Harken blocks

Electronics/Navigation Equipment

- Standard Horizon GPS chartplotter CP300i at pedestal(2011)
- Furuno GPS Navigator at nav desk
- Raymarine I60 Wind instrument (2014)
- Raymarine i50 Depth (2014)
- ST60 wind transducer (2014)
- Autohelm 6000 Autopilot
- Plastimo Horizon 135 compass (2011)
- Icom VHF (2013)

Deck & Hull

- Quickset Delta 35# anchor (2011) w/ 100' 3/8" chain + 100' rode
- Heavy Danforth type anchor w/ 100' chain + 100' rode
- Lofrans electric windlass (new motor 2013)
- SS anchor roller
- lifelines and stanchions
- side gates
- teak decks in good condition
- custom oversized aluminum handrails
- aluminum toe rails
- 5 coats barrier coat on bottom (2010)
- hull is solid glass
- deck is balsa-cored
- ballast keel is cast iron
- swim ladder
- long cockpit seating
- cockpit table with flip up leafs and SS grab rails
- Force 10 BBQ grill

- Dodger with strataglass windows
- Bimini and side curtains
- cockpit lockers
- jacklines
- lines and fenders
- PFD's
- fire extinguishers
- Flares

Mechanical

- 50 Hp Yanmar 4JH2E, 5031 hrs
- Good annual maintenance and updates
- Kanzaki Transmission
- Alternator
- Racor filter
- 38 gal SS fuel tank
- 1" SS shaft
- 3 bladed 16" bronze prop
- Seacocks replaced (2010)
- 5 gal Hotwater heater
- 2 Jabsco manual heads, Macerator, Y valves and holding tank
- 2 Sureflow shower sump pumps
- Jabsco par bilge pump
- Manual whale gusher pump
- 94 gal water tank plastic

Electrical Equipment

- NEW 250 watt Kyosera solar panel (2014)
- Blue Sky controller (2014)
- (3) Trojan Group 31 house batteries, 105 amp hrs (2013)
- (1) Deka 24 XHD start battery (2013)
- Cristec Nemo 75 Charger/Invertor
- AC/DC systems
- New 120 AC electric panel (2011)
- 30 amp shore power cord
- Honda generator backup

Negotiable Items

- 10'2" Walker Bay Odyssey Dingy with inflatable floor 2008
- 6hp Yamaha 4 stroke outboard engine 2011

Exclusions

Owner's personal belongings.

Disclaimer

The Company offers the details of this vessel or yacht in good faith but cannot guarantee or warrant the accuracy of this information nor warrant the condition of the vessel. A buyer should instruct his representatives, agents, or his surveyors, to investigate such details as the buyer desires validated. This vessel or yacht is offered subject to prior sale, price change, or withdrawal without notice.

PHOTOS

Asymmetrical Genniker



At the Dock



Swim Platform



Teak Decks in Good Condition



In-mast Furling Main



Dodger



Shaded Cockpit



Swim Platform



Cockpit Table and Seating



Helm



Helm Instruments



Looking Aft



View from Helm



Beautiful Interior



Nav Desk



Great Galley



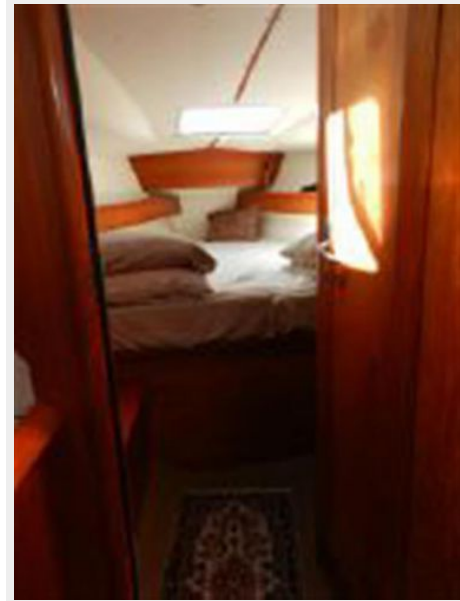
Updated Eno Stove and Oven



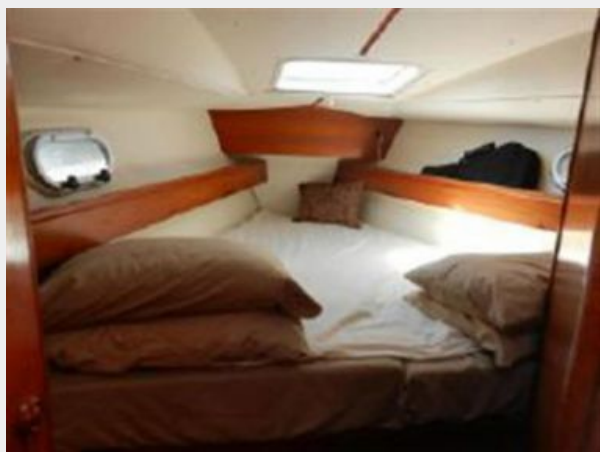
Deep Refrigeration



V-berth



Roomy Berth



Forward Head



Starboard Aft Cabin



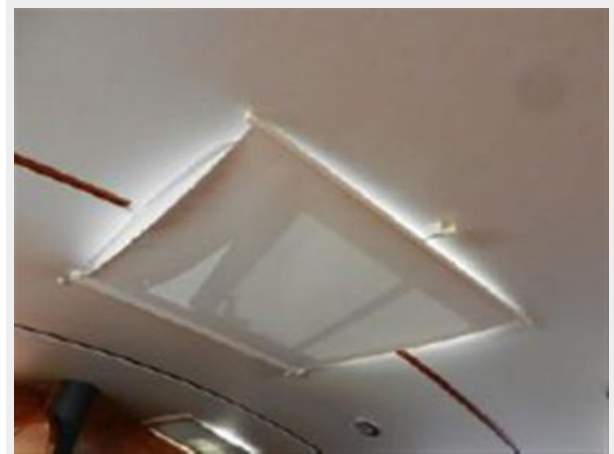
Port Aft Cabin



Aft Head



Shades for Hatches



Well Maintained Yanmar



Good Side Access



Mast and Rigging



well Organized Running Rigging



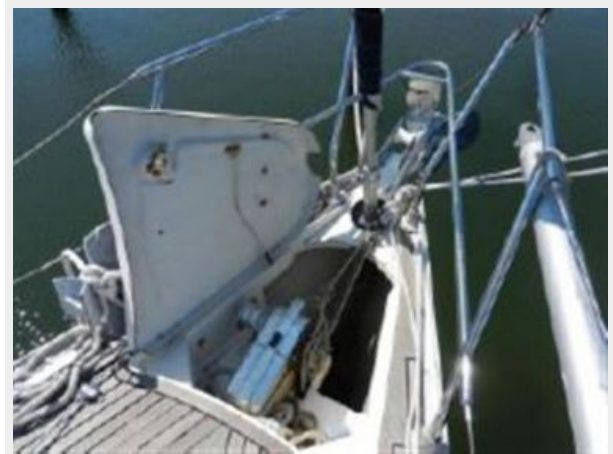
Z Spars



NEW 250 watt Kyosera Solar Panel



Anchor Locker



Side Decks

Electric Windlass



Favorite Anchorage!



CONTACTS

Andrey Shestakov, leading yacht broker of the sales department of Shestakov Yacht Sales Inc. Shestakov Yacht Sales Inc., the official representative of the Miami/Fort Lauderdale FL headquarters.

Contact details

Email: andrey@shestakovyachtsales.com

Web: shestakovyachtsales.com/en/

Telephones

USA: +1(954)274-4435

Office hours

Monday – Saturday: **9:00 - 21:00** EDT

Sunday: **closed**

Address



Harbour Towne Marina, 850 NE 3rd St,
STE 213, Dania, FL 33004