

CRICKET TOO — BERTRAM



Builder: BERTRAM

Year Built: 1970

Model: Sport Fisherman

Price: PRICE ON APPLICATION

Location: United States

LOA: 31' 0" (9.45m)

Beam: 11' 2" (3.40m)

Max Draft: 2' 9" (0.84m)

Our experienced yacht broker, Andrey Shestakov, will help you choose and buy a yacht that best suits your needs **Cricket Too — BERTRAM** from our catalogue. Presently, at Shestakov Yacht Sales Inc., we have a wide variety of yachts available on our sale's list. We also work in close contact with all the big yacht manufacturers from all over the world.

If you would like to buy a yacht **Cricket Too — BERTRAM** or would like help answering any questions concerning purchasing, selling or chartering a yacht, please call **+1(954)274-4435**

TABLE OF CONTENTS

TABLE OF CONTENTS	2
SPECIFICATIONS	3
Overview	3
Basic Information	3
Dimensions	3
Speed, Capacities and Weight	3
Accommodations	4
Hull and Deck Information	4
Engine Information	4
PHOTOS	5
CONTACTS	9
Contact details	9
Telephones	9
Office hours	9
Address	9

SPECIFICATIONS

Overview

Introduced in 1966 and lasting more than a decade in production, the 31 Bahia Mar is a classic Bertram fishing boat whose bold styling and exceptional handling insured her popularity well into the future. She was built on Bertram's legendary deep-V hull with moderate beam, a low center of gravity, and a wave-calming 23 degrees of transom dead rise. The key to the Bahia Mar's enduring popularity is her spacious 147-square-foot cockpit, one of the largest to be found in any boat this size. Helm visibility is another feature fisherman have come to admire—sightlines are excellent in all directions. Raised motor boxes provide good access to the engines while doubling as convenient seats for anglers and galley with sink and refrigerator, standup head with sink, and a V-berth forward with storage under. A good many Bahia Mars have seen years of operation in charter and dive-boat fleets. Twin 220hp Cummins Diesel Engines engines cruise at 20 knots.

Basic Information

Category: Sport Fisherman

Sub Category: Express

Model Year: 1970

Year Built: 1970

Country: United States

Vessel Top: 2363

Cockpit: Yes

Dimensions

LOA: 31' 0" (9.45m)

Beam: 11' 2" (3.40m)

Max Draft: 2' 9" (0.84m)

Clearance: 8' 3" (2.51m)

MFG Length: 30' 7" (9.32m)

Speed, Capacities and Weight

Displacement: 9400 Pounds

Water Capacity: 18 Gallons

Fuel Capacity: 222 Gallons

Accommodations

Total Cabins: 1

Total Heads: 1

Hull and Deck Information

Hull Material: Fiberglass

Engine Information

Engines: 2

Manufacturer: Cummins

Model: 6BTA

Engine Type: Inboard

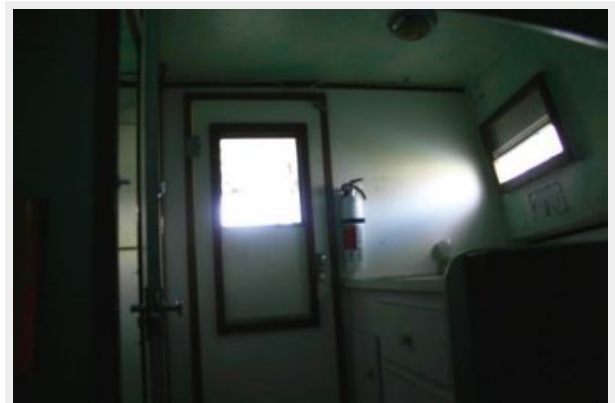
Fuel Type: Diesel

PHOTOS









CONTACTS

Andrey Shestakov, leading yacht broker of the sales department of Shestakov Yacht Sales Inc. Shestakov Yacht Sales Inc., the official representative of the Miami/Fort Lauderdale FL headquarters.

Contact details

Email: andrey@shestakovyachtsales.com

Web: shestakovyachtsales.com/en/

Telephones

USA: +1(954)274-4435

Office hours

Monday – Saturday: **9:00 - 21:00** EDT

Sunday: **closed**

Address



Harbour Towne Marina, 850 NE 3rd St,
STE 213, Dania, FL 33004