

BELLISSIMA — SEA RAY



Судостроитель: SEA RAY

Год постройки: 2006

Модель: Моторная яхта

Цена: ЦЕНА ЯХТЫ ПО ЗАПРОСУ

Местонахождение: United States

Длина общая: 44' 0" (13.41m)

Ширина: 14' 0" (4.27m)

Макс. осадка: 3' 4" (1.02m)

Купить **BELLISSIMA — SEA RAY** а также выбрать подходящую вам яхту из нашего каталога яхт вам поможет опытный яхтенный брокер Андрей Шестаков. На сегодняшний день компания **Shestakov Yacht Sales Inc.** имеет большое количество яхт в собственном списке продаж, а также тесно сотрудничает со всеми крупными яхтенными производителями по всему миру.

Для того чтобы купить яхту **BELLISSIMA — SEA RAY** а также проконсультироваться по любому вопросу связанному с покупкой, продажей, чартером яхт позвоните по телефону **+7(918)465-66-44**.

ОГЛАВЛЕНИЕ

ОГЛАВЛЕНИЕ	2
ХАРАКТЕРИСТИКИ	4
Обзор	4
Основная информация	4
Размеры	5
Скорость, вместимость и масса	5
Размещение	5
Корпус и палуба	5
Информация о двигателе	5
ПОДРОБНОЕ ОПИСАНИЕ	6
Accommodations	6
Forward Stateroom	6
Forward Shower - Starboard	6
Forward Head - Port	6
Mid - Stateroom	7
Mid - Stateroom Head / Shower	7
Salon	7
Cabin Features	7
Air Conditioning / Heating	8
Galley	8
Electronics & Electrical	8
Deck Cockpit Features	9
Hull & Deck Features	9
Additional Equipment Control Station	10
Engine Room	11
Underwater Gear	11
Исключения	11
Отказ от ответственности	11

ФОТОГРАФИИ	13
КОНТАКТЫ	21
Контактная информация	21
Телефоны	21
Время работы	21
Адрес	21

ХАРАКТЕРИСТИКИ

Обзор

HYDRAULIC SWIM PLATFORM LIFT

BOW THRUSTER

SAT TV

COCKPIT AC

VESSEL KEPT UNDERCOVER...

Key Features & Upgrades

- **HYDRAULIC SWIM PLATFORM \$25,000 OPTION**
- **BOW THRUSTER**
- Cockpit A/C & Heating
- Raymarine E120 Chartplotter/Radar
- Raymarine Autopilot ST7001
- **Satellite TV**
- Flatscreen TV/DVD - Cockpit
- Flatscreen TV/DVD - Mid Berth
- Generator Upgrade - 9.0KW
- Fiberglass Hardtop w/ Full Enclosure
- Cockpit Refrigerator
- Power Assisted Steering
- ACR Spotlight
- Sun Pad - Forward Deck
- Vacuum System
- Rod Holders
- Dinghy Hard Bottom Inflatable

Основная информация

Тип судна: Моторная яхта

Модельный год: 2006

Год постройки: 2006

Страна: United States

Размеры

Длина общая: 44' 0" (13.41m)

Ширина: 14' 0" (4.27m)

Макс. осадка: 3' 4" (1.02m)

Скорость, вместимость и масса

Вместимость воды: 100 Gallons

Вместимость сточного бака: 42 Gallons

Объем топливного бака: 335 Gallons

Размещение

Всего кают: 2

Спальные места: 6

Всего ком. состава: 2

Корпус и палуба

Материал корпуса: Fiberglass

Информация о двигателе

Двигатели: 2

Производитель: Cummins

Модель: QSC 500

Тип двигателя: Inboard

Тип топлива: Diesel

ПОДРОБНОЕ ОПИСАНИЕ

Accommodations

The 44' Sundancer is one of Sea Ray's most popular diesel yachts. Good size handles sea conditions with comfort and confidence. Easy to maneuver with good power at low speed and bow thruster assistance. Her open cockpit design gives easy access from the helm and open entertainment either at the dock or underway.

Stepping below is a huge salon and galley with two private staterooms and two heads. Room for six to sleep with a convertible sofa. Her warm cherry interior adds to the comfort down below. Televisions in the staterooms, salon, and cockpit adds to your entertainment options.

Forward Stateroom

- Bed, Full-Size Island-Style: w/Innerspring Mattress, Pillows, Sheets,
- Coordinated Spread & Drawer Storage below
- Door, Pocket: Privacy w/Mirror
- Hanging Locker: w/Light & Shelves - Starboard
- Hanging Locker: w/Light & Shelves - Port
- Mirrored Rope Locker: Bulkhead
- Storage, Gunwale Cabinets: Starboard
- TV, 17" Flatscreen: w/Remote Mounted DVD Player

Forward Shower - Starboard

- Clothes Hook
- Curtain, Shower
- Door, Privacy: Access from Forward Stateroom
- Handrails: Stainless Steel
- Shower: w/Seat & Adjustable Shower Wand (Grohe®)

Forward Head - Port

- Door, Privacy: Access from Forward Stateroom
- Handrails: Stainless Steel
- Head System, (VacuFlush®)
- Power Vent: 12V w/Stainless Grill
- Storage, Gunwale Cabinet
- Storage, Medicine Cabinet: Mirrored

- Vanity: w/Solid Surface Countertop, Sink, Grohe® Faucet & Storage below

Mid - Stateroom

- Door, Privacy: Sliding Pocket
- Hanging Locker: Port
- Mirrored Bulkhead: Aft
- Portlight: Stainless Steel - (Fixed)
- Seating, Conversation Pit: Converts to Double Berth w/Slide-Out Base
- Storage, Cabinets: Starboard

Mid - Stateroom Head / Shower

- Clothes Hook
- Curtain, Shower
- Door, Privacy: Access from Mid-Stateroom
- Handrail, Elliptical: Stainless Steel
- Head: w/Fiberglass Settee Lid & VacuFlush® Toilet
- Storage, Medicine Cabinet
- Vanity: w/Solid Surface Countertop, Sink, Faucet w/Pullout Shower Sprayer & Storage below

Salon

- Blinds, Wood
- End Table: Solid Surface w/Lift-Out Storage
- Mirror, Wall Accent
- Seating, L-shaped Sofa: w/Storage Below - Converts to Bed w/Filler Cushions (Ultraleather HP™)
- Storage, Gunwale Cabinets
- TV, 20" Flatscreen LCD: Drop Down, (120V) w/Remote DVD Player, Coax Outlet & Gain Control Panel
- Table, Dinette: w/High-Gloss Wood Surface & Dedicated Storage

Cabin Features

- Carbon Monoxide Monitors
- Carpet Runner, Interior: Sunbrella®
- Carpet, Deep-Pile BCF: 44-Ounce
- Handrails: Stainless Steel

- Interior Finish: Light Cherry
- Lighting, 12V: Halogen
- Lighting, 12V: Indirect
- Outlets & Switch Plates: Satin Nickel Finish
- Outlets, 120V: GFI Protected
- Outlets, Phone
- Pillows, Accent
- Steps, Entryway: Cherry Wood
- Stereo, Clarion®: 12V AM/FM Single CD, & Sirius® Satellite Receiver w/Antenna, w/6-Disc CD Changer, MP3 Port, Amplifier, Subwoofer, Speakers (8), Digital Cockpit Remote Control & Speaker Selector Switches
- Storage, In-Floor

Air Conditioning / Heating

- Custom Integral Vent System
- Zone-Controlled Reverse-Cycle System: (19,000 BTU)

Galley

- Blinds: Wood
- Coffeemaker, 120V
- Countertop, Solid Surface: Sink, Single-Lever Grohe® Faucet & Sink Cover
- Freezer 120V/12V: Under-Counter - Dual-Voltage (Waeco®)
- Handrail: Stainless Steel
- Microwave/Convection Oven, 120V
- Outlet, 12V: Accessory
- Power Vent: 12V w/Stainless Grill
- Refrigerator, 120V/12V: Under-Counter - Dual-Voltage (Waeco®)
- Storage, Drawers: w/Cutlery Insert
- Storage, Upper & Lower: w/Designated Plate & Glass Storage
- Stove, 120V Recessed Two-Burner: w/Solid Surface Cover (Kenyon®)
- Trash Receptacle: w/Chute & Solid Surface Cove

Electronics & Electrical

- **Electronics:**
- Raymarine E120 Chartplotter / Radar
- Raymarine Autopilot ST 7001
- Smartcraft Display
- **Electrical:**

- Batteries (5): w/Trays & Switches
- Battery Charger/Converter: 120V/40 Amp/12V
- Battery Solenoid Switches: 12V Latching (2)
- Isolators, Galvanic (2)
- Panel, Circuit Breaker: Remote
- Panel, DC Main Breaker
- Panel, Main Distribution - AC
- Panel, Main Distribution - DC
- Shore Power,: Dual 30 Amp/120V/60 Cycle w/50' Cords & Adapters
- TV/Phone Inlet: w/TV Antenna, TV Shore Cord & Phone Shore Cord
- Wiring, Color-Coded: w/Chafe Protection

Deck Cockpit Features

- Beverage Holders (10)
- Carpet Liner, Snap-In
- Companion Bench: w/Molded Fiberglass Storage Base & Euro-Style Backrest
- Door, Cabin Entry: Curved Acrylic
- Door, Transom: Acrylic
- Floor Liner, Fiberglass: Self-Bailing
- Handrails: 316 Stainless Steel
- Hatch, Engine Room: Electrically Actuated
- Ice Bucket, Insulated: Built-In
- Icemaker: 120V
- Lighting: Indirect
- Outlet, 120V: GFI Protected
- Outlet, 12V: Accessory
- Seating, Helm: w/Flip-Up Thigh-Rise Bolster, Armrests & Heavy-Duty Pedestal w/Slide, Swivel & Pneumatic Vertical Adjustment
- Seating, U-Shaped: Aft
- Ship's Bell
- Sport Spoiler: Molded Fiberglass (Seamless) w/Overhead Lighting & Stainless Steel Grab Rails
- Steps, Molded Deck Access
- Storage, Side Panel: Starboard
- Table, Cockpit: w/Corian® Insert & Dedicated Storage
- Wet Bar: w/Sink & Faucet, Corian® Countertop, Stainless Steel Handrail, Trash Receptacle & Storage Cabinet - Port

Hull & Deck Features

- Bottom Paint

- Bow Rail, 316 Stainless Steel: w/Welded Stanchions, Intermediate Rails & Life Lines
- Cleats, Custom Sea Ray® Thru-Bolted (8): Stainless Steel
- Deck Fill Plates: Stainless Steel
- Deck Rails: 316 Stainless Steel
- Drain Plugs: Brass-Threaded - Garboard
- Graphics, Striping
- Handrails: 316 Stainless Steel
- Hatch, Deck Vent: Translucent w/Locks & Sky Screen Cover (20x20) Trapezoid
- Hull Windows: Stainless Steel - Fixed
- Light, Stern
- Lights, Navigation
- Portlights (2): Stainless Steel - (Opening)
- Resin: High-Performance Vinylester
- Rub Rail, Heavy-Duty PVC: w/Stainless Steel Insert
- Skylight, Flush-Mount: w/Retractable Sunshade - Salon
- Storage, Transom Wall: for Fenders & Gear
- Stringer System, Fiberglass
- Swim Platform, Integral/Extended: w/Concealed Stainless Steel Three-Step Swim Ladder w/Integral Grab Handle
- Thru-Hull Fittings: Stainless Steel
- Toe Rail, Molded Fiberglass: Deck
- Vent System, Engine Room: Integral
- Windshield Washer System
- Windshield Wipers: w/Delay & Speed Control
- Windshield, Tempered/Tinted Curved Glass: w/Stainless Steel Frame, Electric Front Vent & Stainless Steel Supports

Additional Equipment Control Station

- Alarms, High-Water: Bilge & Cabin
- Compass
- Emergency Start System: Engines
- Gel-Coated Dash: Nickel
- Horns, Air (Concealed): Dual Trumpet
- Instrument Panel
- Shift & Throttle Controls: w/Gold Knobs
- SmartCraft™ Diagnostics: - Instrumentation, Custom Sea Ray® SmartCraft3 4-in-1 Multigauges (2) w/Low-Glare Blue Night Lighting & Chrome Bezels (Includes: Fuel Level, Oil Pressure, Voltmeter, and Water Temperature)
- - SmartCraft™ System View (Includes: Air & Water Temperature, Combined Fuel Flow/Range, Depth, Engine Alarms/Hour meters, Engine Synchronizer, GPS Interface & Raymarine® 125 GPS Antenna System Maintenance Records)
- Steering Wheel, Wood-Accent

- Steering, Hydraulic
- Steering, Tilt Wheel
- Switch Panel (Backlit)
- Switches, Illuminated: Weatherproof Rockers & Dimmer Control
- Systems Monitor, Digital LCD: for Pump Monitoring

Engine Room

- Bilge Pumps, 12V Automatic (2)
- Bilge Pumps, 12V Automatic High-Water: (1 Bilge, 1 Cabin)
- Blowers, 12V Bilge (2)
- Fire Suppression System: Automatic w/Manual Pull
- Freshwater Cooling: Inboard Engine
- Gel-Coated Engine Room, Oyster
- Insulation, Engine Room - 2": w/Vinyl Barrier
- Lighting, 12V
- Oil Changer System: Engines & Generator (Diesel Only)
- Steps, Engine Room Access

Underwater Gear

- Bonding System: w/Zinc Hull Plate
- Exhaust, Underwater: Patented
- Propeller Shafts, 1.5": Stainless Steel (2) - Aquamet 19 (Gas)
- Propeller Shafts, 1.75": Stainless Steel (2) - Aquamet 22 (Diesel)
- Propellers, Nibral 4-Blade Cup
- Rudders, Manganese-Bronze: w/Stainless Steel Posts
- Seacocks: on All Underwater Fittings
- Seawater Strainers
- Shaft Logs, Dripless: w/Extra Seal Carrier Kit
- Struts, Manganese-Bronze
- Trim Tabs, Hydraulic

Исключения

При продаже яхты исключаются личные вещи владельца.

Отказ от ответственности

Компания предоставляет описание судна или яхты добросовестно, но не может гарантировать точность этой информации, а также не ручается за техническое

состояние. Покупатель должен проинструктировать своих агентов или оценщиков исследовать представленную информацию более подробно, по собственному желанию. Продажа судна или яхты, изменение цены или снятие с продажи будет происходить без предварительного уведомления.

ФОТОГРАФИИ



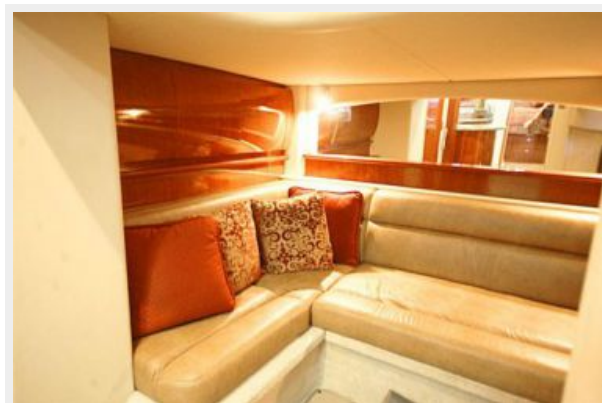
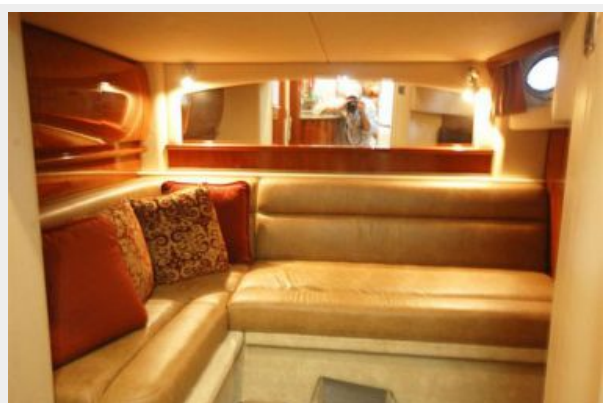














КОНТАКТЫ

Андрей Шестаков (Andrey Shestakov) – ведущий яхтенный брокер отдела продаж яхт и судов компании Shestakov Yacht Sales Inc. Официальный представитель Shestakov Yacht Sales Inc. для русскоговорящих клиентов в центральном офисе компании в Майами/Форт Лодердейл/Флорида/США.

Контактная информация

Email: andrey@shestakovyachtsales.com

Web: shestakovyachtsales.com

Телефоны

Краснодарский край: **+7(918)465-66-44**

США, Майами, Флорида: **+1(954)274-4435**

Время работы

Понедельник – Суббота: **9:00 - 21:00**
EDT

Воскресенье: **Закрито**

Адрес



Harbour Towne Marina, 850 NE 3rd St,
STE 213, Dania, FL 33004