

THATS AMORE — LEOPARD



Builder: LEOPARD

Year Built: 2001

Model: Cruiser

Price: PRICE ON APPLICATION

Location: United States

LOA: 88' 0" (26.82m)

Beam: 19' 10" (6.05m)

Min Draft: 3' 11" (1.19m)

Cruise Speed: 25 Kts. (29 MPH)

Max Speed: 28 Kts. (32 MPH)

Our experienced yacht broker, Andrey Shestakov, will help you choose and buy a yacht that best suits your needs **THATS AMORE — LEOPARD** from our catalogue. Presently, at Shestakov Yacht Sales Inc., we have a wide variety of yachts available on our sale's list. We also work in close contact with all the big yacht manufacturers from all over the world.

If you would like to buy a yacht **THATS AMORE — LEOPARD** or would like help answering any questions concerning purchasing, selling or chartering a yacht, please call **+1(954)274-4435**

TABLE OF CONTENTS

TABLE OF CONTENTS	2
SPECIFICATIONS	3
Overview	3
Basic Information	3
Dimensions	3
Speed, Capacities and Weight	4
Accommodations	4
Hull and Deck Information	4
Engine Information	4
PHOTOS	5
CONTACTS	11
Contact details	11
Telephones	11
Office hours	11
Address	11

SPECIFICATIONS

Overview

Thoroughbred sport boat built Cantiere di Arno Navale. Leopard's design methodology created a high-performance luxury cruiser Low bridge clearance to avoid the long,

annoying wait for bridges, and a shallow draft for easy reef navigating make this the ultimate Florida/Bahamas cruiser.

Every possible amenity: air conditioning for hot summer nights, full galley for gourmet meals, hot/cold water for showers on the transom after diving or in the stateroom before cocktail/dinner hour. 90 feet of high speed luxury, for much less than a brand new yacht much smaller than this. For the discriminating yachtsman only. New soft goods, electronics, and air conditioning.

Basic Information

Category: Cruiser

Sub Category: Express

Model Year: 2001

Year Built: 2001

Refit Year: 2013

Refit Type: Exterior paint, interior soft goods, teak decks etc

Country: United States

Dimensions

LOA: 88' 0" (26.82m)

Beam: 19' 10" (6.05m)

Min Draft: 3' 11" (1.19m)

Speed, Capacities and Weight

Cruise Speed: 25 Kts. (29 MPH)

Cruise Speed RPM: 350 Kts.

Max Speed: 28 Kts. (32 MPH)

Displacement: 211643.77152 Pounds

Water Capacity: 527 Gallons

Fuel Capacity: 8000 Gallons

Accommodations

Total Cabins: 4

Total Berths: 6

Sleeps: 9

Total Heads: 4

Crew Cabin: 2

Crew Berths: 3

Crew Sleeps: 3

Crew Heads: 1

Hull and Deck Information

Hull Material: GRP

Hull Configuration: Planing

Hull Color: White

Hull Designer: Studio Bacigalupo

Exterior Designer: Paolo Calliari

Interior Designer: In house

Engine Information

Engines: 2

Manufacturer: MTU

Model: MTU 16V2000 M90

Engine Type: Inboard

Fuel Type: Diesel

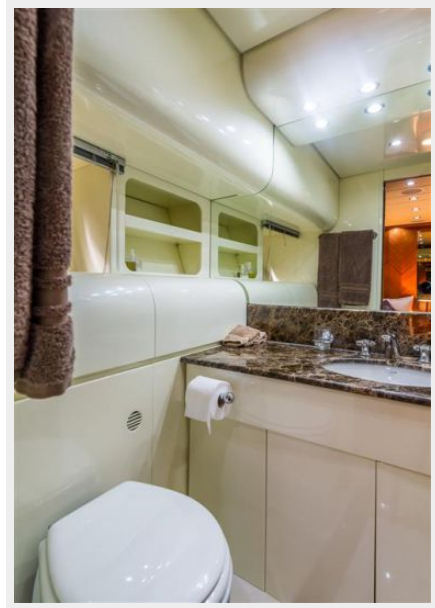
PHOTOS













CONTACTS

Andrey Shestakov, leading yacht broker of the sales department of Shestakov Yacht Sales Inc. Shestakov Yacht Sales Inc., the official representative of the Miami/Fort Lauderdale FL headquarters.

Contact details

Email: andrey@shestakovyachtsales.com

Web: shestakovyachtsales.com/en/

Telephones

USA: +1(954)274-4435

Office hours

Monday – Saturday: **9:00 - 21:00** EDT

Sunday: **closed**

Address



Harbour Towne Marina, 850 NE 3rd St,
STE 213, Dania, FL 33004