

## ISLAND GIRL — OCEAN YACHTS



**Builder:** [Ocean Yachts](#)

**Year Built:** 1985

**Model:** Sport Fisherman

**Price:** PRICE ON APPLICATION

**Location:** United States

**LOA:** 38' 0" (11.58m)

**Beam:** 13' 8" (4.17m)

**Min Draft:** 3' 2" (0.97m)

**Cruise Speed:** 19 Kts. (22 MPH)

Our experienced yacht broker, Andrey Shestakov, will help you choose and buy a yacht that best suits your needs **ISLAND GIRL — Ocean Yachts** from our catalogue. Presently, at Shestakov Yacht Sales Inc., we have a wide variety of yachts available on our sale's list. We also work in close contact with all the big yacht manufacturers from all over the world.

If you would like to buy a yacht **ISLAND GIRL — Ocean Yachts** or would like help answering any questions concerning purchasing, selling or chartering a yacht, please call **+1(954)274-4435**

# TABLE OF CONTENTS

---

|                                       |    |
|---------------------------------------|----|
| TABLE OF CONTENTS                     | 2  |
| SPECIFICATIONS                        | 5  |
| Overview                              | 5  |
| Basic Information                     | 5  |
| Dimensions                            | 5  |
| Speed, Capacities and Weight          | 5  |
| Accommodations                        | 5  |
| Hull and Deck Information             | 6  |
| Engine Information                    | 6  |
| DETAILED INFORMATION                  | 7  |
| Accommodations                        | 7  |
| Master Stateroom, Forward             | 7  |
| Guest Stateroom, Amidship Port        | 7  |
| Salon                                 | 7  |
| Head                                  | 7  |
| Galley, Main Deck, Amidship Starboard | 8  |
| Helm / Electronics and Navigation     | 8  |
| Deck                                  | 8  |
| Engine and Mechanical Equipment       | 9  |
| Electrical System                     | 9  |
| Cockpit / Fishing Equipment           | 9  |
| Safety Equipment                      | 9  |
| Additional Features / Equipment       | 10 |
| New in 2014                           | 10 |
| New in 2012                           | 10 |
| Exclusions                            | 11 |
| Salesman's Comments                   | 11 |
| Exclusions                            | 11 |

|                                   |    |
|-----------------------------------|----|
| Disclaimer                        | 11 |
| PHOTOS                            | 12 |
| Profile 2                         | 12 |
| Master Stateroom                  | 12 |
| Guest Stateroom                   | 12 |
| Salon 1                           | 12 |
| Salon 2                           | 13 |
| Salon 3                           | 13 |
| Salon 4                           | 13 |
| Head 1                            | 13 |
| Head 2                            | 14 |
| Galley 1                          | 14 |
| Galley 2                          | 14 |
| Helm / Electronics & Navigation 1 | 14 |
| Helm / Electronics & Navigation 2 | 15 |
| Helm / Electronics & Navigation 3 | 15 |
| Helm / Electronics & Navigation 4 | 15 |
| Helm / Electronics & Navigation 5 | 15 |
| Deck 1                            | 16 |
| Deck 2                            | 16 |
| Deck 3                            | 16 |
| Deck 4                            | 16 |
| Engine & Mechanical Equipment 1   | 17 |
| Engine & Mechanical Equipment 2   | 17 |
| Electrical System - Generator     | 17 |
| Cockpit / Fishing Equipment 1     | 17 |
| Cockpit / Fishing Equipment 2     | 18 |
| Profile 3 - Rear                  | 18 |
| CONTACTS                          | 19 |

---

|                 |    |
|-----------------|----|
| Contact details | 19 |
| Telephones      | 19 |
| Office hours    | 19 |
| Address         | 19 |

---

# SPECIFICATIONS

---

## Overview

---

***PRICED JUST REDUCED!!! OWNER WANTS SOLD!!! Boat was in light charter use at South Jersey Marina. CALL FOR DETAILS!!!***

## Basic Information

---

**Category:** Sport Fisherman

**Sub Category:** Convertible

**Model Year:** 1985

**Year Built:** 1985

**Country:** United States

**Vessel Top:** Hardtop

**Fly Bridge:** Yes

**Cockpit:** Yes

## Dimensions

---

**LOA:** 38' 0" (11.58m)

**Beam:** 13' 8" (4.17m)

**Min Draft:** 3' 2" (0.97m)

## Speed, Capacities and Weight

---

**Cruise Speed:** 19 Kts. (22 MPH)

**Cruise Speed RPM:** 2050 Kts.

**Displacement:** 23000 Pounds

**Water Capacity:** 80 Gallons

**Fuel Capacity:** 354 Gallons

## Accommodations

---

**Total Cabins:** 2

**Sleeps:** 4

**Total Heads:** 1

---

## Hull and Deck Information

---

**Hull Material:** Fiberglass

**Deck Material:** Teak

**Hull Configuration:** Modified V-Hull

**Hull Color:** White

---

## Engine Information

---

**Engines:** 2

**Manufacturer:** Caterpillar

**Model:** 3208 TA

**Engine Type:** Inboard

**Fuel Type:** Diesel

---

# DETAILED INFORMATION

---

## Accommodations

---

Sleeps four owners and guests in two Staterooms for a total of four berths. One Head with shower. Enter center aft bulkhead door - Dinette to starboard, Settee to port, Galley to starboard.

### Master Stateroom, Forward

---

- Wallpaper
- Double berth
- Hanging locker
- Under bed storage
- Teak & holly flooring
- Air conditioning w/ controls

### Guest Stateroom, Amidship Port

---

- Hanging locker
- Under bed storage
- Upper & lower berth
- Teak & holly flooring

### Salon

---

- TV
- Sofa
- Blinds
- Dinette
- Storage
- Wallpaper
- Rug runner
- Stereo system
- TV w/ DVD player
- Teak & holly flooring
- Air conditioning w/ controls

### Head

---

- Sink

- Shower
- Exhaust fan
- Medicine cabinet
- Teak & holly flooring
- Sea Land, fresh water, overboard, holding tank, electric head

---

## Galley, Main Deck, Amidship Starboard

---

- Sink
- Refrigerator
- Water heater
- Teak & holly flooring
- Microwave oven / Convection oven
- Pressure, manual, dockside fresh water system

---

## Helm / Electronics and Navigation

---

- Compass
- Furuno GPS
- Sitex sea temp
- Icom M504 VHF radio (primary)
- Icom M422 VHF radio (secondary)
- Furuno chart plotter in addition to NAV NET
- Furuno NAV NET GPS / Fish finder / 48mile Radar
- Bridge stereo system w/ DVD player & new in 2012 Cocpit speakers

---

## Deck

---

- Anchor
- Bow pulpit
- Tuna Tower
- Transom door
- Bridge curtain
- (2) Helm seats
- Spreader lights
- 6-person life raft
- Navigation lights
- 3-sided Enclosure
- Half Tower w/ soft top
- Fresh water, salt water Deck wash down system



---

## Engine and Mechanical Equipment

---

- Trim tabs
- Fuel filters
- Bilge blowers
- Air conditioner
- Oil pressure alarm
- Hydraulic steering
- Oil transfer system
- Fresh water cooling
- Bridge engine controls
- Halon fire control system
- Engine temperature alarm
- Engine fuel shut-off valve
- Thermal, acoustical insulation
- (3) Automatic, manual bilge pumps
- Twin 375 hp. Diesel I/B CAT 3208 TA's

---

## Electrical System

---

- Dockside cables
- (2) 8-D Batteries
- 12v DC electrical system
- Automatic battery charger
- 220v AC electrical system
- Westerbeke 7.6 kW generator w/ 946 hrs.

---

## Cockpit / Fishing Equipment

---

- Fish box
- Outriggers
- Bait freezer
- Tuna Tower
- Cockpit sink
- Center rigger
- Fighting chair
- (6) Rod holders
- 6-rod Rocket launcher
- LED lighting three-color - (3) in overhead, (1) in each corner

---

## Safety Equipment

---

- Flares
- Life raft
- Fire extinguishers
- Self release EPIRB
- Offshore life jackets

---

## **Additional Features / Equipment**

---

- Center door entrance
- Etching on back windows
- Tower steering & controls
- Engines & generator recently serviced
- 2012 Soda blasted and barrier coated (Micron paint bottom)

---

## **New in 2014**

---

- Enclosure
- Propellers
- Sitex sea temp
- Aft bilge pump
- Starboard battery
- Emergency bilge pump & switch

---

## **New in 2012**

---

- TV
- EPIRB
- DVD player
- Port fuel tank
- Stereo system
- Interior blinds
- Interior hardware
- Cockpit hardware
- Bridge stereo system
- Sealand fresh water head
- Speakers in Cockpit & Salon
- Lights in overhead & Cockpit
- Hot water heater quick recovery
- Microwave oven / Convection oven
- Faucets & fixtures in head, shower & Galley

---

## Exclusions

---

Owner's personal gear and items.

---

## Salesman's Comments

---

***PRICED JUST REDUCED!!! OWNER WANTS SOLD!!! Boat was in light charter use at South Jersey Marina. CALL FOR DETAILS!!!***

---

## Exclusions

---

Owner's personal belongings.

---

## Disclaimer

---

The Company offers the details of this vessel or yacht in good faith but cannot guarantee or warrant the accuracy of this information nor warrant the condition of the vessel. A buyer should instruct his representatives, agents, or his surveyors, to investigate such details as the buyer desires validated. This vessel or yacht is offered subject to prior sale, price change, or withdrawal without notice.

# PHOTOS

**Profile 2**



**Master Stateroom**



**Guest Stateroom**



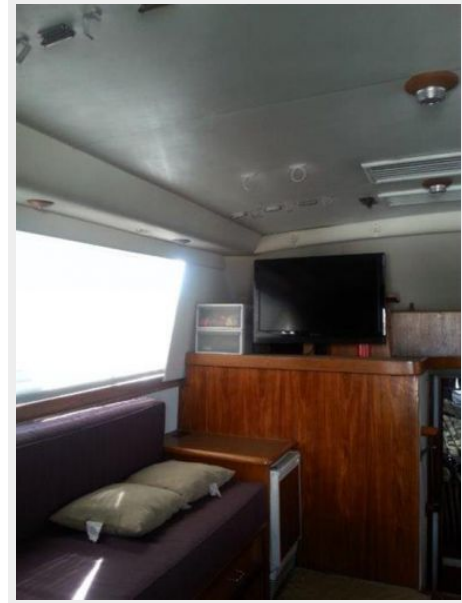
**Salon 1**



Salon 2



Salon 3



Salon 4



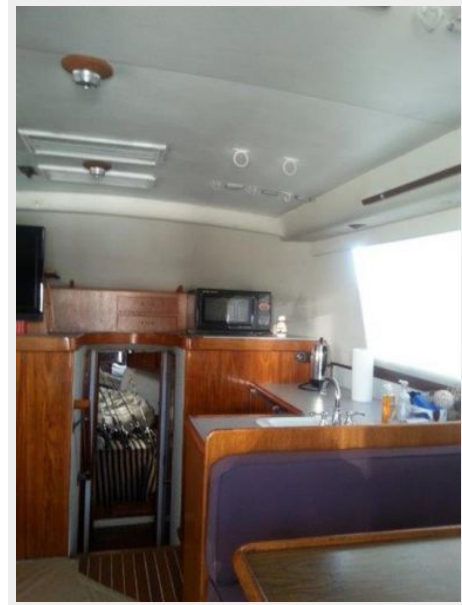
Head 1



**Head 2**



**Galley 1**



**Galley 2**



**Helm / Electronics & Navigation 1**



Helm / Electronics & Navigation 2



Helm / Electronics & Navigation 3



Helm / Electronics & Navigation 4



Helm / Electronics & Navigation 5



**Deck 1**



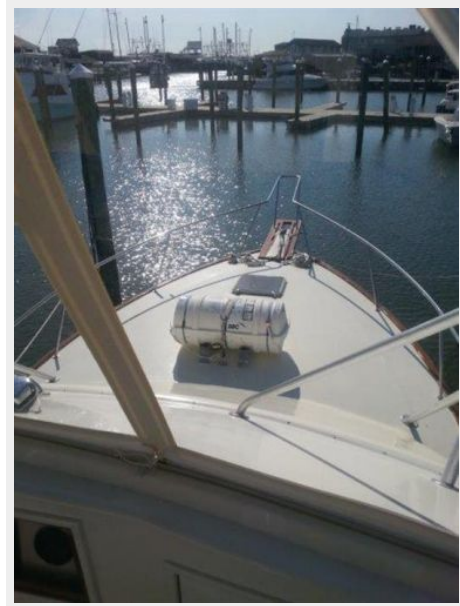
**Deck 2**



**Deck 3**

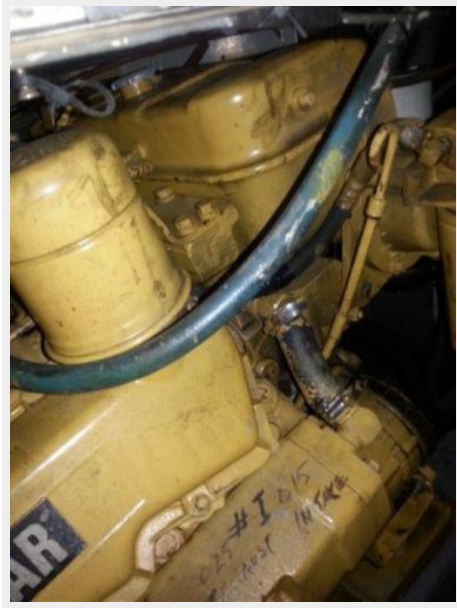


**Deck 4**

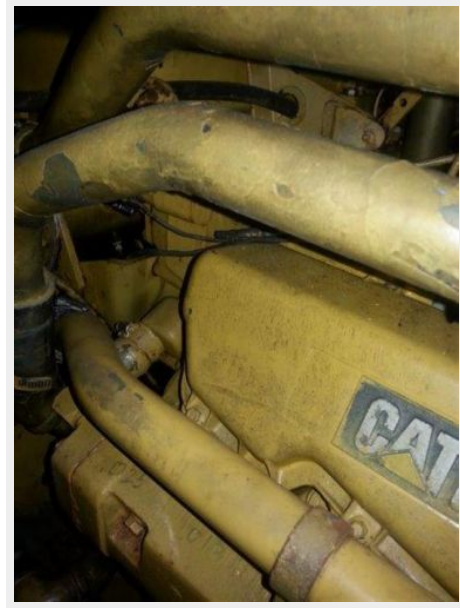




### Engine & Mechanical Equipment 1



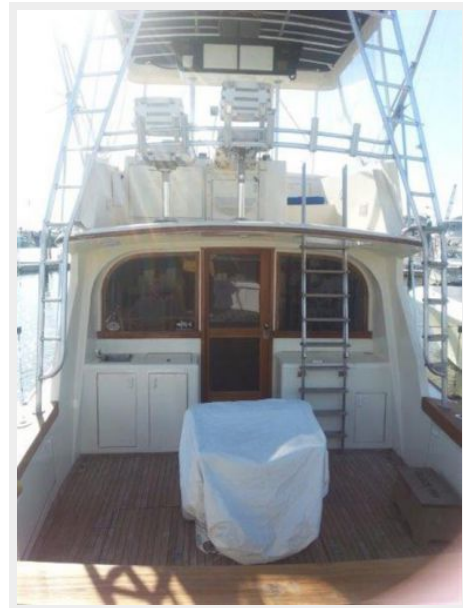
### Engine & Mechanical Equipment 2



### Electrical System - Generator



### Cockpit / Fishing Equipment 1



## Cockpit / Fishing Equipment 2



## Profile 3 - Rear



---

# CONTACTS

---

Andrey Shestakov, leading yacht broker of the sales department of Shestakov Yacht Sales Inc. Shestakov Yacht Sales Inc., the official representative of the Miami/Fort Lauderdale FL headquarters.

---

## Contact details

---

Email: [andrey@shestakovyachtsales.com](mailto:andrey@shestakovyachtsales.com)

Web: [shestakovyachtsales.com/en/](http://shestakovyachtsales.com/en/)

---

## Telephones

---

USA: +1(954)274-4435

---

## Office hours

---

Monday – Saturday: **9:00 - 21:00** EDT

Sunday: **closed**

---

## Address

---



Harbour Towne Marina, 850 NE 3rd St,  
STE 213, Dania, FL 33004