

## DUFFY 42' — DUFFY



**Builder:** DUFFY

**Year Built:** 1999

**Model:** Cruiser

**Price:** PRICE ON APPLICATION

**Location:** United States

**LOA:** 42' 1" (12.83m)

**Beam:** 14' 7" (4.44m)

**Max Draft:** 4' 3" (1.30m)

**Cruise Speed:** 20 Kts. (23 MPH)

**Max Speed:** 26 Kts. (30 MPH)

Our experienced yacht broker, Andrey Shestakov, will help you choose and buy a yacht that best suits your needs **Duffy 42' — DUFFY** from our catalogue. Presently, at Shestakov Yacht Sales Inc., we have a wide variety of yachts available on our sale's list. We also work in close contact with all the big yacht manufacturers from all over the world.

If you would like to buy a yacht **Duffy 42' — DUFFY** or would like help answering any questions concerning purchasing, selling or chartering a yacht, please call **+1(954)274-4435**

# TABLE OF CONTENTS

TABLE OF CONTENTS	2
SPECIFICATIONS	4
Overview	4
Basic Information	4
Dimensions	4
Speed, Capacities and Weight	5
Accommodations	5
Hull and Deck Information	5
Engine Information	5
DETAILED INFORMATION	6
Accommodations	6
Helm Station	6
Electrical	6
Mechanical	6
Deck and Hull	7
Overview	7
Exclusions	7
Disclaimer	7
PHOTOS	8
Stern	8
Port Profile	8
Deckhouse View forward	8
Deckhouse View Starboard	8
Deckhouse	8
Deckhouse	8
Deckhouse	9
Deckhouse View Aft	9
Companion Chair	9

Galley	9
Galley	9
Galley	9
Stall Shower	10
Head Compartment	10
View from Aft from Master Berth	10
Master Berth	10
Master Berth Starboard	10
Master Berth Port	10
Helm Staion	11
Helm SightLine	11
Engine Room	11
Engine Room	11
Engine Room	11
Engine Room	11
Engine Room	12
Engine Room	12
Engine Hours	12
Anchoring Platform	12
Aft From Foredeck	12
Running Gear With Prop-Speed	12
Bow Thruster	13
<b>CONTACTS</b>	<b>14</b>
Contact details	14
Telephones	14
Office hours	14
Address	14

---

# SPECIFICATIONS

---

## Overview

---

The Duffy 42 is one of the most handsome Downeast designs ever drawn. The profile is classic, the sheer is attractive and the boat is perfectly proportioned. The 42's have served in a variety of capacities: as year round workboats hauling lobster traps in Maine, as offshore sword or tuna boats with tower and pulpit and as a yacht-detailed cruising boats. The single engine, full-skeg design will deliver an astonishingly good ride in all conditions, with great fuel efficiency. For twelve years following commissioning, this Duffy 42 served three month Great Lake summers and stored in a heated shed during the remaining nine months. Since moving to the East Coast two years ago, she has been in Hinckley's care with heated storage each winter and some expert customization of galley and anchoring systems. Comfortable cruise speed is 20 knots, top is 25. This is a classic Downeast yacht with great performance, no varnish, obsessive maintenance and light seasonal use. We invite comparisons with two and three year old boats by way of condition.

## Basic Information

---

**Category:** Cruiser

**Model Year:** 1999

**Year Built:** 1999

**Country:** United States

**Vessel Top:** 2363

## Dimensions

---

**LOA:** 42' 1" (12.83m)

**LWL:** 39' 8" (12.09m)

**LOD:** 42' 0" (12.80m)

**Beam:** 14' 7" (4.44m)

**Max Draft:** 4' 3" (1.30m)

---

## Speed, Capacities and Weight

---

**Cruise Speed:** 20 Kts. (23 MPH)

**Cruise Speed RPM:** 2000 Kts.

**Max Speed:** 26 Kts. (30 MPH)

**Displacement:** 32000 Pounds

**Water Capacity:** 200 Gallons

**Holding Tank:** 150 Gallons

**Fuel Capacity:** 500 Gallons

---

## Accommodations

---

**Total Cabins:** 1

---

## Hull and Deck Information

---

**Hull Material:** Fiberglass

**Hull Finish:** Stainless Steel

---

## Engine Information

---

**Engines:** 1

**Manufacturer:** Caterpillar

**Model:** 3406E

**Fuel Type:** Diesel

---

# DETAILED INFORMATION

---

## Accommodations

---

The deckhouse is bright and open with 360 degree visibility and the convenience of port & starboard wing doors. The cockpit door is fitted with a screen. Furnishings are simple but elegant. A leather settee / sleeper is to port with matching barrel chair to starboard. The obligatory flat-screen TV faces the settee atop a built-in media / storage locker. A hi-lo, drop-leaf table serves for cocktails or dinner. Helm station is to starboard with excellent 360 degree sight-lines, matching Pompanette chairs are available for skipper and navigator. Cabin sole is teak parquet, all cabinetry, trim and hull ceilings are of satin varnished cherry. Large windows are fitted with beige curtains. The overall impression is that of a rugged yet finely built yacht. Galley components include a deep stainless sink, flush-mounted Panasonic microwave, two burner glass cooktop, Norcold stainless under-counter fridge/freezer, filtered water dispenser and generous counter space. Head compartment includes stainless sink with vanity, abundant storage, Groco electric head, opening port and hatch, large shower stall with seat and teak parquet sole. Owner's quarters forward include a tapered queen berth with custom innerspring mattress, above are individual reading lights and hull shelf storage; P & S cedar-lined hanging lockers and additional drawer storage below the berth storage. Chain and storage locker is accessible from the head of the berth. The one stateroom arrangement plan does not overreach; doorways, stairways, headroom and locker spaces are all suitably generous

## Helm Station

---

Caterpillar electronic controls Furuno 1932 48 mile radar w/ open array antenna Robertson AP 5 autopilot Furuno DGPS color GPS / Plotter Raytheon ST 60 Depth / Speed / Log ICOM M-127 VHF Teak rimmed steering wheel Windlass remote Ritchie Powerdamp compass Remote spotlight control Bow thruster control Windshield wiper controls Kahlenberg Two-Note air horn 12V outlet

## Electrical

---

Onan 10 KW genset in hush box – 141 hours as of 5/2014 30 amp & 50 amp shore power cords Master AC & DC control panel with thermal breakers and generator panel Separated engine and house battery banks: 6 4D's.

## Mechanical

---

Caterpillar 3406E – painted white Twin Disk marine gear Dual Racor 1000's with switchover TankTender fuel level monitoring system Reverso oil change system Halon system 110V engine room flood lights Two Flojet pumps with pre-filters and accumulator tanks: domestic water &

seawater Machinery space in white Awlgrip – impeccably clean.

---

## Deck and Hull

---

Custom anchoring platform w/ bobstay: crafted by Hinckley 2013 Simpson Lawrence windlass with capstan & foot switches CQR – 45 lb. with chain / nylon rode Sidepower bow thruster Custom radar mast Transom door Diamondplate deck steps Cockpit locker cabinet with eight drawers Stainless bow rail back to wing doors Five overhead hatches Large cockpit with three Freeman lock-down hatches Fenders & docklines

---

## Overview

---

The Duffy 42 is one of the most handsome Downeast designs ever drawn. The profile is classic, the sheer is attractive and the boat is perfectly proportioned. The 42's have served in a variety of capacities: as year round workboats hauling lobster traps in Maine, as offshore sword or tuna boats with tower and pulpit and as a yacht-detailed cruising boats. The single engine, full-skeg design will deliver an astonishingly good ride in all conditions, with great fuel efficiency. For twelve years following commissioning, this Duffy 42 served three month Great Lake summers and stored in a heated shed during the remaining nine months. Since moving to the East Coast two years ago, she has been in Hinckley's care with heated storage each winter and some expert customization of galley and anchoring systems. Comfortable cruise speed is 20 knots, top is 25. This is a classic Downeast yacht with great performance, no varnish, obsessive maintenance and light seasonal use. We invite comparisons with two and three year old boats by way of condition.

---

## Exclusions

---

Owner's personal belongings.

---

## Disclaimer

---

The Company offers the details of this vessel or yacht in good faith but cannot guarantee or warrant the accuracy of this information nor warrant the condition of the vessel. A buyer should instruct his representatives, agents, or his surveyors, to investigate such details as the buyer desires validated. This vessel or yacht is offered subject to prior sale, price change, or withdrawal without notice.

# PHOTOS

**Stern**



**Port Profile**



**Deckhouse View forward**



**Deckhouse View Starboard**



**Deckhouse**



**Deckhouse**





**Deckhouse**



**Deckhouse View Aft**



**Companion Chair**



**Galley**



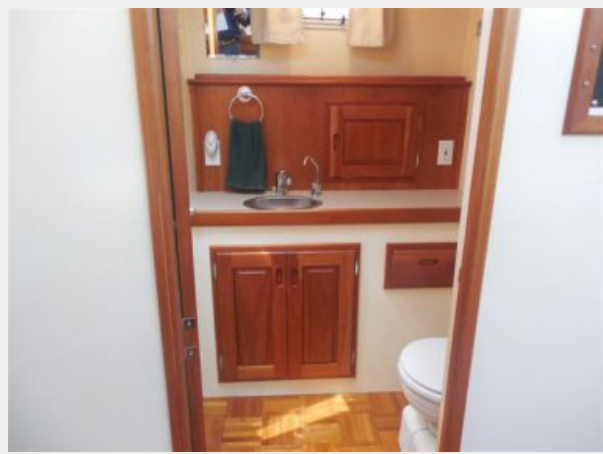
**Galley**



**Galley**



**Head Compartment**



**Stall Shower**



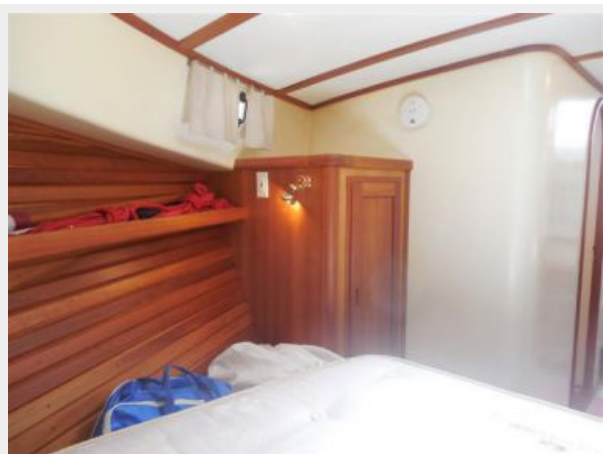
**View from Aft from Master Berth**



**Master Berth**



**Master Berth Starboard**



**Master Berth Port**



**Helm Staion**



**Helm SightLine**



**Engine Room**



**Engine Room**



**Engine Room**



**Engine Room**



**Engine Room**



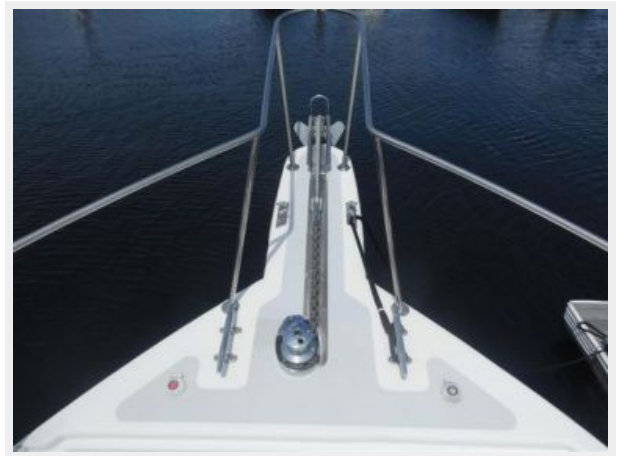
**Engine Room**



**Engine Hours**



**Anchoring Platform**



**Aft From Foredeck**



**Running Gear With Prop-Speed**



## Bow Thruster



---

# CONTACTS

---

Andrey Shestakov, leading yacht broker of the sales department of Shestakov Yacht Sales Inc. Shestakov Yacht Sales Inc., the official representative of the Miami/Fort Lauderdale FL headquarters.

---

## Contact details

---

Email: [andrey@shestakovyachtsales.com](mailto:andrey@shestakovyachtsales.com)

Web: [shestakovyachtsales.com/en/](http://shestakovyachtsales.com/en/)

---

## Telephones

---

USA: +1(954)274-4435

---

## Office hours

---

Monday – Saturday: **9:00 - 21:00** EDT

Sunday: **closed**

---

## Address

---



Harbour Towne Marina, 850 NE 3rd St,  
STE 213, Dania, FL 33004