

DUFFY 42' — DUFFY



Судостроитель: DUFFY

Год постройки: 1999

Модель: Крейсер

Цена: **ЦЕНА ЯХТЫ ПО ЗАПРОСУ**

Местонахождение: United States

Длина общая: 42' 1" (12.83m)

Ширина: 14' 7" (4.44m)

Макс. осадка: 4' 3" (1.30m)

Крейс. скорость: 20 Kts. (23 MPH)

Макс. скорость: 26 Kts. (30 MPH)

Купить **Duffy 42' — DUFFY** а также выбрать подходящую вам яхту из нашего каталога яхт вам поможет опытный яхтенный брокер Андрей Шестаков. На сегодняшний день компания **Shestakov Yacht Sales Inc.** имеет большое количество яхт в собственном списке продаж, а также тесно сотрудничает со всеми крупными яхтенными производителями по всему миру.

Для того чтобы купить яхту **Duffy 42' — DUFFY** а также проконсультироваться по любому вопросу связанному с покупкой, продажей, чартером яхт позвоните по телефону **+7(918)465-66-44**.

ОГЛАВЛЕНИЕ

ОГЛАВЛЕНИЕ	2
ХАРАКТЕРИСТИКИ	4
Обзор	4
Основная информация	4
Размеры	4
Скорость, вместимость и масса	5
Размещение	5
Корпус и палуба	5
Информация о двигателе	5
ПОДРОБНОЕ ОПИСАНИЕ	6
Accommodations	6
Helm Station	6
Electrical	6
Mechanical	6
Deck and Hull	7
Overview	7
Исключения	7
Отказ от ответственности	7
ФОТОГРАФИИ	8
Stern	8
Port Profile	8
Deckhouse View forward	8
Deckhouse View Starboard	8
Deckhouse	8
Deckhouse	8
Deckhouse	9
Deckhouse View Aft	9
Companion Chair	9

Galley	9
Galley	9
Galley	9
Stall Shower	10
Head Compartment	10
View from Aft from Master Berth	10
Master Berth	10
Master Berth Starboard	10
Master Berth Port	10
Helm Staion	11
Helm SightLine	11
Engine Room	11
Engine Room	11
Engine Room	11
Engine Room	11
Engine Room	12
Engine Room	12
Engine Hours	12
Anchoring Platform	12
Aft From Foredeck	12
Running Gear With Prop-Speed	12
Bow Thruster	13
КОНТАКТЫ	14
Контактная информация	14
Телефоны	14
Время работы	14
Адрес	14

ХАРАКТЕРИСТИКИ

Обзор

The Duffy 42 is one of the most handsome Downeast designs ever drawn. The profile is classic, the sheer is attractive and the boat is perfectly proportioned. The 42's have served in a variety of capacities: as year round workboats hauling lobster traps in Maine, as offshore sword or tuna boats with tower and pulpit and as a yacht-detailed cruising boats. The single engine, full-skeg design will deliver an astonishingly good ride in all conditions, with great fuel efficiency. For twelve years following commissioning, this Duffy 42 served three month Great Lake summers and stored in a heated shed during the remaining nine months. Since moving to the East Coast two years ago, she has been in Hinckley's care with heated storage each winter and some expert customization of galley and anchoring systems. Comfortable cruise speed is 20 knots, top is 25. This is a classic Downeast yacht with great performance, no varnish, obsessive maintenance and light seasonal use. We invite comparisons with two and three year old boats by way of condition.

Основная информация

Тип судна: Крейсер

Модельный год: 1999

Год постройки: 1999

Страна: United States

Верх: 2363

Размеры

Длина общая: 42' 1" (12.83m)

Длина по ватерлинии: 39' 8" (12.09m)

Длина палубы: 42' 0" (12.80m)

Ширина: 14' 7" (4.44m)

Макс. осадка: 4' 3" (1.30m)

Скорость, вместимость и масса

Крейс. скорость: 20 Kts. (23 MPH)

Крейсерская скорость поворота: 2000 Kts.

Макс. скорость: 26 Kts. (30 MPH)

Водоизмещение: 32000 Pounds

Вместимость воды: 200 Gallons

Вместимость сточного бака: 150 Gallons

Объем топливного бака: 500 Gallons

Размещение

Всего кают: 1

Корпус и палуба

Материал корпуса: Fiberglass

Отделка корпуса: Stainless Steel

Информация о двигателе

Двигатели: 1

Производитель: Caterpillar

Модель: 3406E

Тип топлива: Diesel

ПОДРОБНОЕ ОПИСАНИЕ

Accommodations

The deckhouse is bright and open with 360 degree visibility and the convenience of port & starboard wing doors. The cockpit door is fitted with a screen. Furnishings are simple but elegant. A leather settee / sleeper is to port with matching barrel chair to starboard. The obligatory flat-screen TV faces the settee atop a built-in media / storage locker. A hi-lo, drop-leaf table serves for cocktails or dinner. Helm station is to starboard with excellent 360 degree sight-lines, matching Pompanette chairs are available for skipper and navigator. Cabin sole is teak parquet, all cabinetry, trim and hull ceilings are of satin varnished cherry. Large windows are fitted with beige curtains. The overall impression is that of a rugged yet finely built yacht. Galley components include a deep stainless sink, flush-mounted Panasonic microwave, two burner glass cooktop, Norcold stainless under-counter fridge/freezer, filtered water dispenser and generous counter space. Head compartment includes stainless sink with vanity, abundant storage, Groco electric head, opening port and hatch, large shower stall with seat and teak parquet sole. Owner's quarters forward include a tapered queen berth with custom innerspring mattress, above are individual reading lights and hull shelf storage; P & S cedar-lined hanging lockers and additional drawer storage below the berth storage. Chain and storage locker is accessible from the head of the berth. The one stateroom arrangement plan does not overreach; doorways, stairways, headroom and locker spaces are all suitably generous

Helm Station

Caterpillar electronic controls Furuno 1932 48 mile radar w/ open array antenna Robertson AP 5 autopilot Furuno DGPS color GPS / Plotter Raytheon ST 60 Depth / Speed / Log ICOM M-127 VHF Teak rimmed steering wheel Windlass remote Ritchie Powerdamp compass Remote spotlight control Bow thruster control Windshield wiper controls Kahlenberg Two-Note air horn 12V outlet

Electrical

Onan 10 KW genset in hush box – 141 hours as of 5/2014 30 amp & 50 amp shore power cords Master AC & DC control panel with thermal breakers and generator panel Separated engine and house battery banks: 6 4D's.

Mechanical

Caterpillar 3406E – painted white Twin Disk marine gear Dual Racor 1000's with switchover TankTender fuel level monitoring system Reverso oil change system Halon system 110V engine room flood lights Two Flojet pumps with pre-filters and accumulator tanks: domestic water &

seawater Machinery space in white Awlgrip – impeccably clean.

Deck and Hull

Custom anchoring platform w/ bobstay: crafted by Hinckley 2013 Simpson Lawrence windlass with capstan & foot switches CQR – 45 lb. with chain / nylon rode Sidepower bow thruster Custom radar mast Transom door Diamondplate deck steps Cockpit locker cabinet with eight drawers Stainless bow rail back to wing doors Five overhead hatches Large cockpit with three Freeman lock-down hatches Fenders & docklines

Overview

The Duffy 42 is one of the most handsome Downeast designs ever drawn. The profile is classic, the sheer is attractive and the boat is perfectly proportioned. The 42's have served in a variety of capacities: as year round workboats hauling lobster traps in Maine, as offshore sword or tuna boats with tower and pulpit and as a yacht-detailed cruising boats. The single engine, full-skeg design will deliver an astonishingly good ride in all conditions, with great fuel efficiency. For twelve years following commissioning, this Duffy 42 served three month Great Lake summers and stored in a heated shed during the remaining nine months. Since moving to the East Coast two years ago, she has been in Hinckley's care with heated storage each winter and some expert customization of galley and anchoring systems. Comfortable cruise speed is 20 knots, top is 25. This is a classic Downeast yacht with great performance, no varnish, obsessive maintenance and light seasonal use. We invite comparisons with two and three year old boats by way of condition.

Исключения

При продаже яхты исключаются личные вещи владельца.

Отказ от ответственности

Компания предоставляет описание судна или яхты добросовестно, но не может гарантировать точность этой информации, а также не ручается за техническое состояние. Покупатель должен проинструктировать своих агентов или оценщиков исследовать представленную информацию более подробно, по собственному желанию. Продажа судна или яхты, изменение цены или снятие с продажи будет происходить без предварительного уведомления.

ФОТОГРАФИИ

Stern



Port Profile



Deckhouse View forward



Deckhouse View Starboard



Deckhouse



Deckhouse



Deckhouse



Deckhouse View Aft



Companion Chair



Galley



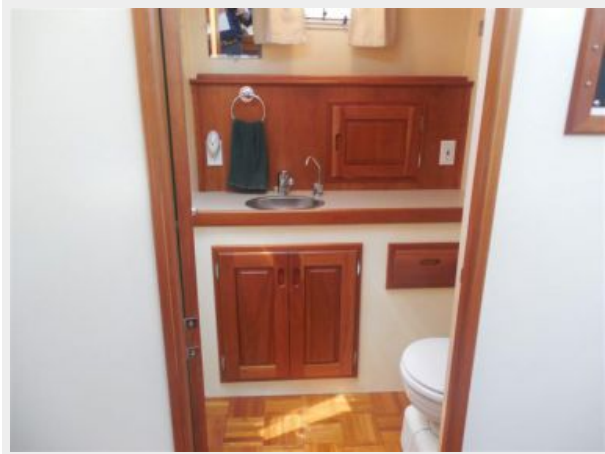
Galley



Galley



Head Compartment



Stall Shower



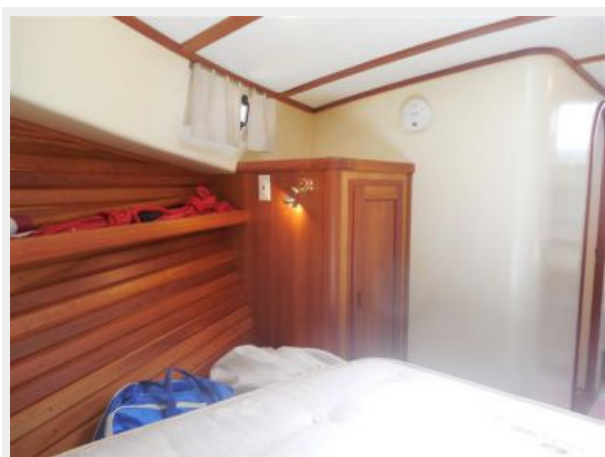
View from Aft from Master Berth



Master Berth



Master Berth Starboard



Master Berth Port



Helm Staion



Helm SightLine



Engine Room



Engine Room



Engine Room



Engine Room



Engine Room



Engine Room



Engine Hours



Anchoring Platform



Aft From Foredeck



Running Gear With Prop-Speed



Bow Thruster



КОНТАКТЫ

Андрей Шестаков (Andrey Shestakov) – ведущий яхтенный брокер отдела продаж яхт и судов компании Shestakov Yacht Sales Inc. Официальный представитель Shestakov Yacht Sales Inc. для русскоговорящих клиентов в центральном офисе компании в Майами/Форт Лодердейл/Флорида/США.

Контактная информация

Email: andrey@shestakovyachtsales.com

Web: shestakovyachtsales.com

Телефоны

Краснодарский край: **+7(918)465-66-44**

США, Майами, Флорида: **+1(954)274-4435**

Время работы

Понедельник – Суббота: **9:00 - 21:00**
EDT

Воскресенье: **Закрито**

Адрес



Harbour Towne Marina, 850 NE 3rd St,
STE 213, Dania, FL 33004