

FOUR ACES — INTREPID POWERBOATS INC.



Builder: INTREPID POWERBOATS INC.

Year Built: 2008

Model: Center Console

Price: PRICE ON APPLICATION

Location: United States

LOA: 31' 0" (9.45m)

Beam: 9' 8" (2.95m)

Min Draft: 2' 0" (0.61m)

Max Draft: 3' 0" (0.91m)

Cruise Speed: 35 Kts. (40 MPH)

Max Speed: 48 Kts. (55 MPH)

Our experienced yacht broker, Andrey Shestakov, will help you choose and buy a yacht that best suits your needs **Four Aces — INTREPID POWERBOATS INC.** from our catalogue. Presently, at Shestakov Yacht Sales Inc., we have a wide variety of yachts available on our sale's list. We also work in close contact with all the big yacht manufacturers from all over the world.

If you would like to buy a yacht **Four Aces — INTREPID POWERBOATS INC.** or would like help answering any questions concerning purchasing, selling or chartering a yacht, please call **+1(954)274-4435**

TABLE OF CONTENTS

TABLE OF CONTENTS	2
SPECIFICATIONS	4
Overview	4
Basic Information	4
Dimensions	4
Speed, Capacities and Weight	4
Accommodations	5
Hull and Deck Information	5
Engine Information	5
DETAILED INFORMATION	6
Accommodations	6
Electronics	6
Electrical Equipment	6
Deck Equipment	6
Features	6
Fishing Equipment	6
Exclusions	7
Disclaimer	7
PHOTOS	8
Console Raymarine E120 display, Furuno digital depth display	8
Stern view	8
Console, Bow thruster, windlass control, VHF	8
Console, Simrad auto pilot	8
Console, VHF, ignition and kill switches	9
Console Clarion stereo remote control	9
Console, throttles, trim tabs, Simrad auto pilot	9
Console	9
L-shaped seating with removable table	9

Cabin	9
Cabin	10
Inside console	10
Windlass and anchor rode locker	10
Dive door	10
Console seating	10
Removable aft couch	10
Transom door	11
Console	11
Hard top, radar, outriggers, rod holders, antennas	11
Battery selector switches	11
Aft deck, transom, coaming pads	12
Outrigger Hand controller under hard top	12
Aft in deck livewell	12
Bow deck looking aft	12
Hard top, radar, antennas, ACR remote control search light	13
Head	13
Transom door, swim platform, Yamaha F250's	13
Cabin TV	13
Console	13
Cabin	13
CONTACTS	14
Contact details	14
Telephones	14
Office hours	14
Address	14

SPECIFICATIONS

Overview

2008 31' Intrepid 310 Walk Around, twin Yamaha F250 hp four stroke outboards, blue Imron painted hull sides, transom door, two transom swim platforms, starboard side dive door with built in ladder, in aft deck live well, removeable aft couch, "automatic" trim tabs with indicator, Raymarine E120 chart plotter/GPS/sonar/radar, Simrad autopilot, Furuno digital depth, Clarion stereo/amplifier/speakers, L-shaped forward seating, Isinglass three sides, hard top (half tower), walk around cabin with refrigerator, microwave, sink, hot/cold fresh water, head/shower, v-bunks, cabin hatch. Comes with Loadmaster tri-axle trailer. This 310 Walk Around is a must see.

Basic Information

Category: Center Console

Sub Category: Walk-around

Model Year: 2008

Year Built: 2008

Country: United States

Vessel Top: Half Tower

Dimensions

LOA: 31' 0" (9.45m)

Beam: 9' 8" (2.95m)

Min Draft: 2' 0" (0.61m)

Max Draft: 3' 0" (0.91m)

Speed, Capacities and Weight

Cruise Speed: 35 Kts. (40 MPH)

Max Speed: 48 Kts. (55 MPH)

Displacement: 9000 Pounds

Water Capacity: 30 Gallons

Holding Tank: 10 Gallons

Fuel Capacity: 214 Gallons

Accommodations

Total Cabins: 1

Total Berths: 2

Sleeps: 2

Total Heads: 1

Hull and Deck Information

Hull Material: Fiberglass

Deck Material: Fiberglass

Hull Configuration: Deep Vee

Hull Color: Blue Imron

Engine Information

Engines: 2

Manufacturer: Yamaha

Model: F250

Engine Type: Outboard

Fuel Type: Gas/Petrol

DETAILED INFORMATION

Accommodations

1/2 tower with fiberglass top with four recessed lights Fiberglass helm seat with electric fore and aft adjustment and footrest Removable aft bench seat Coaming bolsters Bow rail Bow pulpit Cabin refrigerator Microwave Water heater Removable table in forward cockpit L-shaped seating Dive door in starboard aft side, recessed hinges, folds out Lofran's "Marlin" windlass Polished Stainless Steel Delta anchor 200' anchor rode with 15' chain Bow thruster Raritan PHE2 electric head plumbed with fresh water Automatic Bennett trim tabs

Electronics

Raymarine E120 color chart plotter/depth/GPS/radar display Raymarine 4KW 4' open array radar Raymarine 1KW oil box transducer Furuno RD-30 Digital Depth display with smartducer Simrad AP-2622VF autopilot with 2.5" display Ritchie SS2000 compass Clarion CMD5 stereo, MP3 adaptor, Sirius ready JL Audio 200 watt amplifier JL Audio speakers (4) DVD player 19" Samsung LCD TV with tilt bracket

Electrical Equipment

Bow thruster Lofran's Marlin Windlass Water heater Automatic Bennett trim tabs with indicator Additional bilge pump Holding tank with Macerator pump Dual cylinder hydraulic steering Shore power with 50' cord Battery charger 3 batteries (1 for bow thruster) new 2013 Horn ACR remote control search light

Deck Equipment

Fresh water washdown Raw water washdown Transom shower with hot and cold fresh water 2 - 6" pop up cleats aft gunwales Cockpit lights Fold under swim ladder All aluminum powder coated 2 - aft dive/swim platforms

Features

Blue Imron painted hull sides White/white gelcoat Silver Imron boot stripe Silver Imron pin stripe White/white rubrail with stainless steel insert Three sided Isinglass with "U" zip Console cover Helm seat cover Rear bench seat cover L-shaped seating cover Custom built Loadmaster triple axle trailer, never in salt water.

Fishing Equipment

Macerated port fishbox 4 Lee rod holders in aft gunwales Tackle station with 4 drawers aft side of helm seat 4 rod holders aft side of hard top Aft in cockpit deck live well Outriggers with under hard top control

Exclusions

Owner's personal belongings.

Disclaimer

The Company offers the details of this vessel or yacht in good faith but cannot guarantee or warrant the accuracy of this information nor warrant the condition of the vessel. A buyer should instruct his representatives, agents, or his surveyors, to investigate such details as the buyer desires validated. This vessel or yacht is offered subject to prior sale, price change, or withdrawal without notice.

PHOTOS

Stern view



Console Raymarine E120 display, Furuno digital depth display



Console, Simrad auto pilot



Console, Bow thruster, windlass control, VHF



Console, VHF, ignition and kill switches



Console Clarion stereo remote control



Console



Console, throttles, trim tabs, Simrad auto pilot



L-shaped seating with removable table



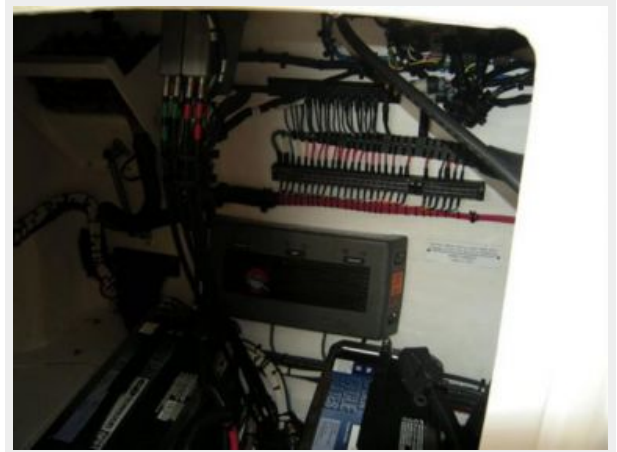
Cabin



Cabin



Inside console



Windlass and anchor rode locker



Dive door



Removable aft couch



Console seating



Transom door



Console



Battery selector switches



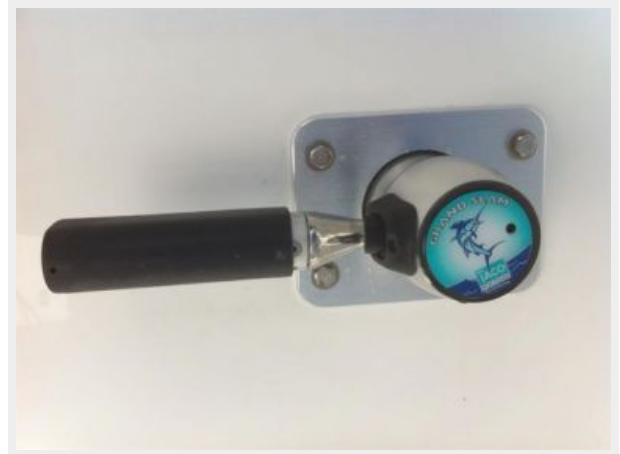
Hard top, radar, outriggers, rod holders, antennas



Aft deck, transom, coaming pads



Outrigger Hand controller under hard top



Aft in deck livewell



Bow deck looking aft



Head



Hard top, radar, antennas, ACR remote control search light



Transom door, swim platform, Yamaha F250's



Cabin TV



Console



Cabin



CONTACTS

Andrey Shestakov, leading yacht broker of the sales department of Shestakov Yacht Sales Inc. Shestakov Yacht Sales Inc., the official representative of the Miami/Fort Lauderdale FL headquarters.

Contact details

Email: andrey@shestakovyachtsales.com

Web: shestakovyachtsales.com/en/

Telephones

USA: +1(954)274-4435

Office hours

Monday – Saturday: **9:00 - 21:00** EDT

Sunday: **closed**

Address



Harbour Towne Marina, 850 NE 3rd St,
STE 213, Dania, FL 33004