

CHEOY LEE ALPHA 87 EXPRESS — CHEOY LEE



Builder: CHEOY LEE

Year Built: 2014

Model: Motor Yacht

Price: PRICE ON APPLICATION

Location: United States

LOA: 87' 1" (26.54m)

Beam: 21' 7" (6.58m)

Max Draft: 5' 5" (1.65m)

Our experienced yacht broker, Andrey Shestakov, will help you choose and buy a yacht that best suits your needs **Cheoy Lee Alpha 87 Express — CHEOY LEE** from our catalogue. Presently, at Shestakov Yacht Sales Inc., we have a wide variety of yachts available on our sale's list. We also work in close contact with all the big yacht manufacturers from all over the world.

If you would like to buy a yacht **Cheoy Lee Alpha 87 Express — CHEOY LEE** or would like help answering any questions concerning purchasing, selling or chartering a yacht, please call **+1(954)274-4435**

TABLE OF CONTENTS

TABLE OF CONTENTS	2
SPECIFICATIONS	3
Overview	3
Basic Information	4
Dimensions	4
Speed, Capacities and Weight	4
Accommodations	4
Hull and Deck Information	4
Engine Information	4
PHOTOS	5
CONTACTS	10
Contact details	10
Telephones	10
Office hours	10
Address	10

SPECIFICATIONS

Overview

Alpha 87 Express-S The collective skills Cheoy Lee's 140-year building heritage, crisp contemporary exterior lines by Michael Peters and interior design from Luiz deBasto bring to the market yet another exceptional yacht. The Alpha 87 Express Sport. State of the art engineering and components, and a thoroughbred hull form leave no doubt that this yacht has a strong focus on performance. Yet walk through the yachts lavish interior and all thoughts of the yachts aggressive performance characteristics melt away. Following on from the Alpha 76' Express and Flybridge models, the A87's increased length and volume boasts four staterooms below with formal dining, galley and salon on the main deck level. Her deBasto designed interior is richly styled in a contemporary motif with tastefully placed high-end fixtures, offering features one would expect aboard a yacht of this caliber. The A87ES has excellent space planning, inclusive of a full beam master stateroom with king sized bed, settee, vanity and ensuite head with his and hers sinks, a large shower and jetted tub. The walk-in closet is finished in aromatic cedar, well lit with plenty of hanging space. The hull windows provide excellent vistas, plenty of ambient light and an open airy feel for the head, closet and stateroom. The layout also features a queen guest stateroom to port, a twin to starboard and the VIP queen stateroom forward. Each stateroom is well planned with abundant storage and ensuite heads and showers. The main deck is accessed via twin curved stairs ahead of the lower helm station. Panoramic views contribute to safe navigation while underway but also add to the open feeling evoked throughout the yacht. The formal dining area is a focal point of the main deck. Centrally located aft of the helm station, it is designed to seat eight comfortably, with easy access to the open plan galley. A galley island doubles up to house the saloon entertainment center which faces the sofa located to starboard. Aft, through the stainless framed doors to the aft deck, are lounge areas with inviting opposing settees and a wet bar. Protection from the sun is provided by a fully retractable awning that stows neatly in the overhead. Crew area access is excellent, with entry through a full size door leading down comfortable steps to the two stateroom crew quarters, which includes a fully equipped galley and dinette. Flanking the aft deck settee are gentle stairs to the swim platform. Space allocated for a tender garage forward of the swim platform, with the option of an automatic launch device that is available throughout the Alpha line. Above the garage is a large sun pad, with the option of a four person hot tub below. Access aloft is via a well-designed stair to port. The 'Sport' designation of this model refers to her 'Sportbridge' design concept. This compact flybridge design enables the yacht to maintain her sporty profile while offering the flexibility of a fully functioning flybridge. The Sportbridge has yet more options on configuration. In addition to the helm seats and control station, the standard sun pad can make way for sofa seating and a wet bar, perfect for social gatherings, and an exciting area to pilot the yacht, or just to enjoy the ride. Forward, along comfortable side decks you are treated to a beautifully crafted settee, a perfect and intimate area for socializing at anchor or underway. Storage is paramount and there is plenty of it in large bow storage lockers. As with the A76, performance is a primary focus and a specialty of hull designer Michael Peters. Top speed exceeds thirty knots with standard power (Caterpillar C32 ACERT, 1900hp), and beyond with optional power, including 2600 hp MTU 16V-2000's.

Basic Information

Category: Motor Yacht

Sub Category: Flybridge

Model Year: 2014

Year Built: 2014

Country: United States

Fly Bridge: Yes

Dimensions

LOA: 87' 1" (26.54m)

LWL: 71' 5" (21.77m)

Beam: 21' 7" (6.58m)

Max Draft: 5' 5" (1.65m)

Speed, Capacities and Weight

Displacement: 159800 Pounds

Water Capacity: 330 Gallons

Holding Tank: 220 Gallons

Fuel Capacity: 1800 Gallons

Accommodations

Total Cabins: 4

Total Heads: 4

Hull and Deck Information

Hull Material: Fiberglass

Engine Information

Engines: 2

Manufacturer: Caterpillar

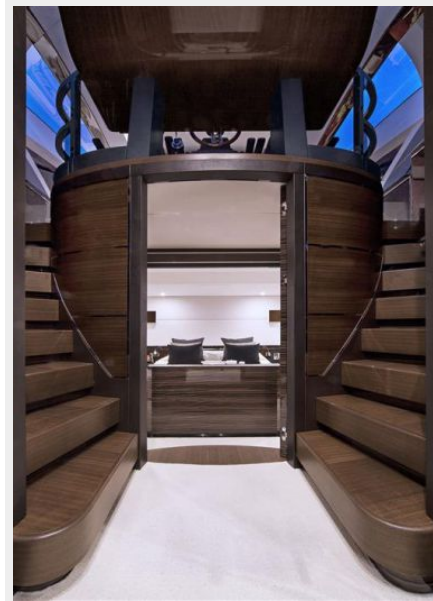
Model: C-32

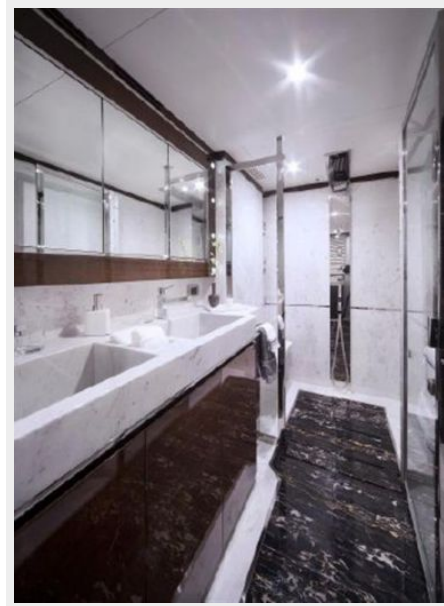
Engine Type: Inboard

Fuel Type: Diesel

PHOTOS











CONTACTS

Andrey Shestakov, leading yacht broker of the sales department of Shestakov Yacht Sales Inc. Shestakov Yacht Sales Inc., the official representative of the Miami/Fort Lauderdale FL headquarters.

Contact details

Email: andrey@shestakovyachtsales.com

Web: shestakovyachtsales.com/en/

Telephones

USA: +1(954)274-4435

Office hours

Monday – Saturday: **9:00 - 21:00** EDT

Sunday: **closed**

Address



Harbour Towne Marina, 850 NE 3rd St,
STE 213, Dania, FL 33004