

WINDSONG II — ISLAND PACKET YACHTS



Builder: ISLAND PACKET YACHTS

Year Built: 1990

Model: Cruising Sailboat

Price: PRICE ON APPLICATION

Location: United States

LOA: 35' 0" (10.67m)

Beam: 12' 0" (3.66m)

Max Draft: 4' 6" (1.37m)

Our experienced yacht broker, Andrey Shestakov, will help you choose and buy a yacht that best suits your needs **Windsong II — ISLAND PACKET YACHTS** from our catalogue. Presently, at Shestakov Yacht Sales Inc., we have a wide variety of yachts available on our sale's list. We also work in close contact with all the big yacht manufacturers from all over the world.

If you would like to buy a yacht **Windsong II — ISLAND PACKET YACHTS** or would like help answering any questions concerning purchasing, selling or chartering a yacht, please call **+1(954)274-4435**

TABLE OF CONTENTS

TABLE OF CONTENTS	2
SPECIFICATIONS	3
Overview	3
Basic Information	3
Dimensions	3
Speed, Capacities and Weight	3
Accommodations	3
Hull and Deck Information	4
Engine Information	4
DETAILED INFORMATION	5
Overview	5
Accommodations	5
Galley	5
Electronics	6
Electrical Equipment	6
Mechanical	6
Sails & Rigging	6
Deck Equipment	7
Disclaimer	8
Exclusions	8
Disclaimer	8
PHOTOS	9
CONTACTS	12
Contact details	12
Telephones	12
Office hours	12
Address	12

SPECIFICATIONS

Overview

We have inspected Windsong II very carefully and are very proud to present this vessel to you for sale. As most of you know the Island Packet 35 Cutter is one of the largest boats of her size and includes becau storage. Island Packets are featured in the book "The World's Best Sailboats" by Ferenc Mate. With her high quality construction, sea worthiness and ease of handling, the Island Packets are very capable offshore, go anywhere yachts. It is rare to find an Island Packet 35 that has so little use with only 267 hours on her original engine along with only ten hours of use since rebuild. She has air conditioning, auto pilot, fridge/freezer, dinghy davits, engine hoist and the varnish has been recently redone with eight coats of Setol.

Basic Information

Category: Cruising Sailboat

Model Year: 1990

Year Built: 1990

Country: United States

Dimensions

LOA: 35' 0" (10.67m)

LWL: 30' 0" (9.14m)

Beam: 12' 0" (3.66m)

Max Draft: 4' 6" (1.37m)

Clearance: 48' 0" (14.63m)

MFG Length: 38' 0" (11.58m)

Speed, Capacities and Weight

Displacement: 17500 Pounds

Water Capacity: 90 Gallons

Holding Tank: 18 Gallons

Fuel Capacity: 48 Gallons

Accommodations

Total Cabins: 2

Hull and Deck Information

Hull Material: Fiberglass

Engine Information

Manufacturer: Yanmar

Model: 3HM35F

Engine Type: Inboard

Fuel Type: Diesel

DETAILED INFORMATION

Overview

We have inspected Windsong II very carefully and are very proud to present this vessel to you for sale. As most of you know the Island Packet 35 Cutter is one of the largest boats of her size and includes becau storage. Island Packets are featured in the book “The World’s Best Sailboats” by Ferenc Mate. With her high quality construction, sea worthiness and ease of handling, the Island Packets are very capable offshore, go anywhere yachts. It is rare to find an Island Packet 35 that has so little use with only 267 hours on her original engine along with only ten hours of use since rebuild. She has air conditioning, auto pilot, fridge/freezer, dinghy davits, engine hoist and the varnish has been recently redone with eight coats of Setol.

Accommodations

The Island Packet 35 is known for exceptionable liveability and very large storage areas located underneath and behind settees. There are also three separate hanging lockers providing additional storage. V-Berth is forward with a large head next aft to port joined by a spacious separate shower (unusual in a yacht of this size). The main saloon has a bulk head mounted table with seating up to six along with storage behind it and the opposite settee. The port settee pulls out to make a double berth and also functions as the seat for the large navigation station. The galley is to starboard of the companionway, and is one of the nicest ever designed for a yacht of this size. It features a huge fridge/freezer and double stainless steel sinks and great storage. The aft cabin is to the port of the companionway and has a hanging locker, cubbies for storage, opening ports and an opening overhead hatch. The 35 has excellent ventilation with eleven opening ports and five opening hatches along with well designed storage.

Galley

- Princess 3-burner stove with oven
- Top loading 12-volt Norcold fridge with freezer section
- Sharp microwave
- Hot/cold running water
- Manual water pump
- Double stainless steel sink
- Built-in separate trash bin

Electronics

- Navico below deck autopilot with H8000 remote
- Standard Horizon VHF
- Data Marine Link 5000 depth, speed, wind (inoperative)
- Garmin GPS Map 225 chart plotter
- Maxxima Marine Stereo

Electrical Equipment

- 2- 110-Volt shore power systems
- 2- 30-Amp shore power cords
- Westerbeke Rotary Air Conditioning
- 2- 210AH house batteries
- 3- 12-Volt fans
- 30-amp Battery charge

Mechanical

- 35 hp diesel-three cylinder, fresh water colled, rubber isolation mounts on reinforced fiberglass bed with oil pan. Only 267 original hours
- 3-blade cruising prop
- Dependable Edson rack & pinion wheel steering with moledede seat at helm
- Westerbeke Rotart Air Conditioning
- Automatic bilge pump
- Manual bilge pump

Sails & Rigging

- Anodized Keel stepped mast

- Double reef Full baten Main with lazy jacks
- 130% Headsail on Harken Furler
- Staysail on self tacking boom with Harken Furler
- Boom Vang
- 2-Lewmar 43ST Primaries
- 2-Lewmar 16 ST sail handling winches
- 2-Lewmar 16 sail handling winches
- 1-Lewmar 8 winch
- 1-Lewmar 24 winch
- All Lines Led Aft

Deck Equipment

100% hand laid fiberglass construction through out with ISO/NPG type gelcoat for maximum durability, plus Island Packet's exclusive PolyClad bottom gelcoat system.

Hull molded in one piece with extra strong triaxial glass, unified with an engineered molded interior grid structure.

Deck laminate cored with advance PolyCore – a tough micro-sphere and resin matrix that has maximum resistance to rot and decontamination.

Deck hardware thru-bolted with aluminum backup plates.

- Welded S.S. double bow rail and stern rail, stanchions, stern rail with S.S. flag staff holder and S.S. staff
- Double lifelines with side gates, full length teak cabin in top hand rails
- Stern gate with quick release
- Stainless Steel swim ladder transom mount with teak steps
- Cockpit table

- Two S.S. anchor rollers with chocks and hinged deck pipes to forepeak
- Maxwell electric anchor windlass
- 33# Bruce anchor with 30" chain and 150' rode
- Kato dinghy davits
- Kato motor hoist
- Edson OB motor mount
- Cockpit cushions (Closed cell foam)
- Insulated cockpit ice box
- Dodger
- Two teak drop boards and café style doors for companionway

Disclaimer

The Company offers the details of this vessel in good faith but cannot guarantee or warrant the accuracy of this information nor warrant the condition of the vessel. A buyer should instruct his agents, or his surveyors, to investigate such details as the buyer desires validated. This vessel is offered subject to prior sale, price change, or withdrawal without notice.

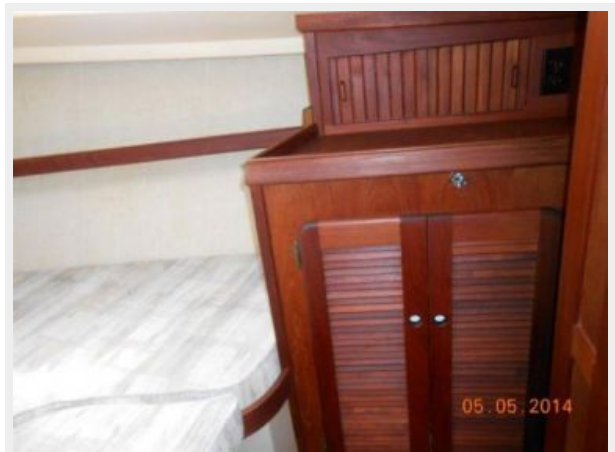
Exclusions

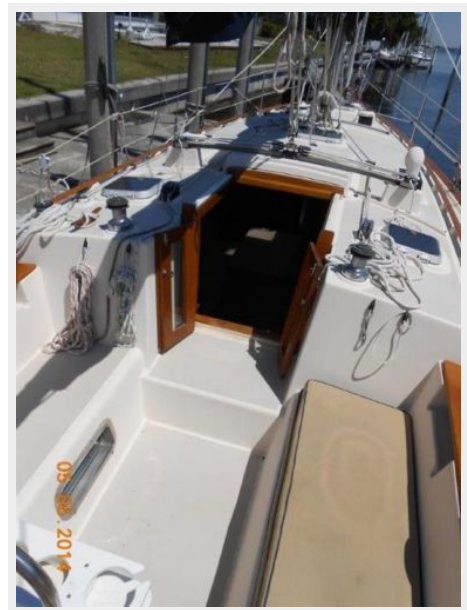
Owner's personal belongings.

Disclaimer

The Company offers the details of this vessel or yacht in good faith but cannot guarantee or warrant the accuracy of this information nor warrant the condition of the vessel. A buyer should instruct his representatives, agents, or his surveyors, to investigate such details as the buyer desires validated. This vessel or yacht is offered subject to prior sale, price change, or withdrawal without notice.

PHOTOS







CONTACTS

Andrey Shestakov, leading yacht broker of the sales department of Shestakov Yacht Sales Inc. Shestakov Yacht Sales Inc., the official representative of the Miami/Fort Lauderdale FL headquarters.

Contact details

Email: andrey@shestakovyachtsales.com

Web: shestakovyachtsales.com/en/

Telephones

USA: +1(954)274-4435

Office hours

Monday – Saturday: **9:00 - 21:00** EDT

Sunday: **closed**

Address



Harbour Towne Marina, 850 NE 3rd St,
STE 213, Dania, FL 33004