

SEARAY SUNDANCER 54 2010 — SEA RAY



Builder: [SEA RAY](#)

LOA: 54' 10" (16.71m)

Year Built: 2010

Min Draft: 4' 3" (1.30m)

Model: Cruiser

Price: **PRICE ON APPLICATION**

Location: United States

Our experienced yacht broker, Andrey Shestakov, will help you choose and buy a yacht that best suits your needs **Searay Sundancer 54 2010 — SEA RAY** from our catalogue. Presently, at Shestakov Yacht Sales Inc., we have a wide variety of yachts available on our sale's list. We also work in close contact with all the big yacht manufacturers from all over the world.

If you would like to buy a yacht **Searay Sundancer 54 2010 — SEA RAY** or would like help answering any questions concerning purchasing, selling or chartering a yacht, please call **+1(954)274-4435**

TABLE OF CONTENTS

TABLE OF CONTENTS	2
SPECIFICATIONS	5
Overview	5
Basic Information	5
Dimensions	5
Speed, Capacities and Weight	5
Accommodations	5
Hull and Deck Information	6
Engine Information	6
DETAILED INFORMATION	7
Vessel Walkthrough	7
Galley	7
Salon	7
Forward / VIP Stateroom	8
Forward / Guest Head	8
Aft / Master Cabin	8
Aft/ Master Head	9
Helm / Control Station	9
Cockpit Features	10
Electrical Systems	11
Fuel System	11
Engine Room	11
Hull & Deck	12
Generator	12
Water System	13
Waste System	13
Underwater Gear	13
Additional Features	13

Exclusions	14
Exclusions	14
Disclaimer	14
PHOTOS	15
Aft Deck Seating	15
Aft Deck Seating	15
Seating	15
Seating	15
helm	15
helm	15
TV	16
cockpit	16
Cockpit Tv	16
Sink/ Refrigerator/ Grill	16
Steps to the helm	16
Helm Seats	16
Helm	17
Helm	17
Helm	17
Helm Seats	17
Cabin	17
TV/ Stereo System	17
Electric pannel	18
Salon	18
Salon/ Dinning	18
Salon	18
Salon/ Vip Forward Cabin	18
Vip / Forward Cabin	18
Vip / Forward Head	19

Salon	19
Salon Tv	19
Salon Seating	19
Salon	19
Master Cabin	19
Master Cabin/Head	20
Master Cabin / Washer & Dryer Combo	20
Washer & Dryer	20
Master Head Aft	20
Master Head Aft	20
Cockpit Seating Area	20
Custom Roof Extension / Custom Made , Aft enclosure	21
Engine Room	21
Engine room	21
Engine room	21
Engine Room/ Racors	21
Sea Ray 54	21
Sea Ray 54	22
CONTACTS	23
Contact details	23
Telephones	23
Office hours	23
Address	23

SPECIFICATIONS

Overview

This Searay 54 with its sweeping deck lines and dramatic profile and elegant Sundancer is sure to get noticed. This member of the Sundancer family features a sleek, wood-trimmed helm with custom-designed instruments, plus an optional fiberglass hardtop. Engineered to outpace every other boat in its class, the 54 Sundancer offers a spectacular combination of style, power and grace.

Basic Information

Category: Cruiser

Sub Category: Express

Model Year: 2010

Year Built: 2010

Country: United States

Vessel Top: Electronic Sunroof

Dimensions

LOA: 54' 10" (16.71m)

LWL: 49' 10" (15.19m)

Min Draft: 4' 3" (1.30m)

Clearance: 16' 4" (4.98m)

Speed, Capacities and Weight

Displacement: 50000 Pounds

Water Capacity: 150 Gallons

Holding Tank: 68 Gallons

Fuel Capacity: 600 Gallons

Accommodations

Total Cabins: 2

Total Heads: 2

Hull and Deck Information

Hull Material: Fiberglass

Interior Designer: Searay

Engine Information

Engines: 2

Manufacturer: Cummins

Model: QSC-600 DTS

Fuel Type: Diesel

DETAILED INFORMATION

Vessel Walkthrough

This Modern and Sleek Searay 54 you enter it via the Hydraulic platform aft and through the transom door located on the starboard side into the deck on the port side you have a L-Shape sofa and at cockpit dining table and on the starboard side there a cabinet / wetbar, with a refrigerator, icemaker, sink and grill .Moving forward up two steps is the Air condition area where the center helm console is with two multifunction navigational displays looking forward you have the windshield also in that area there is a large Sun roof and the TV entertainment area. if you go forward on your port side you will find the steps that will take you down to the go down galley and cabins . On the Port side the galley with its spacious countertops for food preparation, under- counter refrigerator and more on the starboard side there a table and a L shape sofa that seats 4 to 6 people and also converts to a bed there also a large Tv and port holes Forward is the Vip cabin with centerline queen berth and aft of the galley is the full beam master Cabin with storage and head.

Galley

The galley has a spacious countertop for food preparation under the counter refrigerator and Freezer , two burner stove, microwave / convection oven, power vent , and storage .

- Countertop , solid surface w/ Stainless Steel sink, single-Lever faucet w/pullout spray head and solid -surface sink cover .
- Wood Flooring
- Under counter Freezer
- Under counter Refrigerator
- Microwave/ Convection Oven w/ Stainless- Steel Face
- Power Vent
- Storage, Drawers w/Cutlery Insert
- Storage , cabinets -upper & Lower
- Stove - Two burner w/ pop-up cookware retainers
- Trash Receptacle.

Salon

The Salon is located on the starboard of the galley facing forward it has five person ultra leather sofa that converts into a bed there also a Table and the entertainment area and more .

- Entertainment center

- Harman/Kardon AVR 2700 Audio and Video Receiver & Bose Acoustimass module .
- TV 50" LED Flat screen & Blue-ray Player.
- Flooring , Wood
- Seating, sofa w/ pullout Bed -starboard.
- Steps,Entryway-teak w/ stainless-steel handrail.
- Storage, Gunwale Cabinets .
- Table, Convertible Dinning/coffee (movable)w/ High-gloss wood surface & storage below .

Forward / VIP Stateroom

The Vip cabin is located Forward of the Salon and Galley. The port lights and overhead hatch gives a natural glow to the fine woodwork of the forward cabin .

- Bed , Queen-Size Island Style w/ Innerspring Mattress .
- Bose Direct reflecting Cube Speakers(2) Acoustimass Module and amplifier.
- TV.
- Hanging Locker, Cedar lined w/shoji doors.
- Storage , Gunwale Shelves .
- Portholes

Forward / Guest Head

The Forward / Guest Head has a solid Vanity Counter top and under mount sink and a Medicine and storage Cabinet. The spacious shower has a clear Acrylic door .

- Vanity w/ Solid - Surface Countertop.
- Under mount sink w/faucet &storage below w/Trash Receptacle.
- Storage ,Medicine Cabinet -Mirrored.
- Flooring, Tile.
- Handrails, Stainless Steel.
- Bath Accessories -Towel Bar , Bathroom Tissue Holder , Soap Dish & Rope Hook.
- Head (VacuFlush)- Electric.
- Power Vent .

Aft / Master Cabin

The Aft or Master Cabin is one Step down and Aft of the Salon or Galley. The inviting Master Stateroom has a big hull window which brightens this full-beam master which features a queen berth with inner springs mattress.

- Bed ,Queen-Size Island Style w/ Innerspring Mattress .
- Harman/ Kardon Audio /Video receiver.
- Bose Acoustimass Module.
- TV Flat screen.
- Blue Ray Player.
- Hanging Locker.
- Storage, Cabinet with shelves .
- Mirror, large -Trimmed.

Aft/ Master Head

The Master Head is to the starboard side of the Master Cabin. The Master Head has a ceramic tile sole and backsplash with cherry doors in the solid surface countertop. The shower stall has a seat and a Wall mounted shower fixture and a frosted porthole.

- Bath Accessories
- Door , Privacy (access to the stateroom)
- Flooring, Tile - Shower & Head
- Handrails, Stainless Steel
- Head (Vacuflush) -Electric
- Hanging Locker , Cedar Lined w Drawer Storage Below
- Mirrow ,large Full length.
- Power Vent , 24v
- Shower w/Teak Seat , adjustable Shower Wand & Acrylic door
- Storage,Shelves- dedicated Toiletry
- Vanity w/ solid - surface Countertop , tile backsplash, Undermount Sink w/ Faucet & Storage below w/ trash receptacle.

Helm / Control Station

Battery Parallel Switch - Engines

- Compass, Dash
- Dash, Gel Coated - Stone
- Fuel Gauges (2)
- Horn, Air - 24V
- Instrument Panels - High Gloss
- Joystick Control, Zeus®
- Outlet, DC

- SmartCraft Digital Throttle & Shift (DTS)
- SmartCraft® VesselView Display (2):
- Propulsion: Engine Hour Meters, Engine Status, Performance & Fuel, Peak Performance,
- Boost Pressure (Optional), Troll Control & Cruise Control
- Vessel: Vessel Status, Tank Status, Steering Position & Generator Data
- Environment & Navigation: GPS Interface, Depth & Water Temperature, Depth Alerts, Trip
- Log Information, Fuel to Waypoint Data & Navigation Data
- Active Alarms/Details
- Alarm History/Details
- Spotlight w/Dual Halogen Bulbs - Remote Controlled (ACR®)
- Steering, Power Assisted w/Leather Wrapped Isotta Tilt Wheel
- Switch Panels, Backlit - High Gloss
- Switches, Illuminated Weatherproof Rockers & Electronic Dimmer Control

Cockpit Features

Beverage Holders (11)

- Carpet Liner, Snap In - Cockpit
- Door, Cabin Entry w/Color Matched Frame & Tempered/Tinted Glass (Sliding & Lockable w/Screen)
- Door, Transom - Acrylic w/Stainless - Steel Frame
- Floor Liner, Self Bailing Fiberglass w/Gas Assisted Engine Room Service Hatch
- Handrails, 316 Stainless Steel
- Hardtop, Fiberglass w/Retractable Sunroof, Overhead Lighting & Electronic Dimmer
- Icemaker, 120V
- Lighting, 24V LED
- Outlet, 120V GFI Protected
- Outlet, 24V Accessory
- Outlet, Cable TV
- Seating, Aft - L-Shaped w/Fiberglass Storage Bases & Hinged Cushions
- Seating, Helm (2) w/Armrests, Reclining Backrests, Teak Footrests, Heavy Duty Adjustable
- Pedestals & Pivoting Fiberglass Base
- Seating, Starboard Lounger - Forward
- Ship's Bell
- Steps, Boarding (Molded-In) - Starboard
- Steps, Molded Deck Access (From Transom)
- Stereo, Sony® - 12V AM/FM:
- Single CD Player
- Sirius® Satellite Receiver w/Antenna
- iPod® Interface w/Docking Station
- MP3 Port
- Amplifier, Subwoofer, Speakers (4)

- Digital Cockpit Remote Control
- Storage, Side Panel - Port Cockpit
- Sun Pad, Aft Cockpit Conversion w/Upper & Lower Storage Below
- Table, Cockpit - Fiberglass
- Wet Bar w/Fiberglass Sink, Faucet, Stainless Steel Handrail, Solid Surface Countertop, Trash
- Receptacle w/Trash Chute & Carry-On Cooler - Starboard

Electrical Systems

Batteries, 8 D w/Boxes (4)

- Battery Charger Overcurrent Protection
- Battery Charger/Converter, 240V/50 Amp/24V
- Battery Equalizer, 65 Amp (2)
- Battery Solenoid Switches, 12V (2) & 24V (3)
- Cable Television System w/Inlet (Includes Phone Inlet & Phone Shore Cord), TV Shore Cord,
- Coax Outlets, Gain Control & Antenna
- C Phone System - Internal Station to Station
- Panel, Circuit Breaker - Remote
- Panel, DC Main Breaker
- Panel, Main Distribution - AC
- Shore Power, Cablemaster™ (Glendinning), 240V/50 Amp w/75' Cord & Wireless Remote (Cablemaster N/A w/220V/50 Cycle Shore Power)
- Shore Power, Secondary - 50 Amp/120V/60 Cycle w/75' Cord
- Transformer, Shore Power Isolation - 120V/50 Amp, 240V/50 Amp
- Wiring, Color Coded w/Chafe Protection

Fuel System

- Diesel Fuel System - Electric w/Transfer Pump
- Fuel Filters, (3) Racor® - (2) 75-900MAX (Dual) for Engines, (1) 500MAX for Generator
- Fuel Lines, USCG - Type A1
- Fuel Tanks, Aluminum w/Manual Shutoff Valves

Engine Room

Bilge Pumps, 24V Automatic (2)

- Bilge Pumps, 24V Automatic High Water (1 Bilge, 1 Cabin)
- Blowers, 24V Bilge (2)

- Engine Drip Sumps
- Exhaust w/Lift System Mufflers
- Fire Suppression System - Automatic w/Diesel Shutdown, Override & Manual Pull
- Gel Coated Engine Room
- Insulation, Engine Room - 2" w/Loaded Vinyl Barrier
- Ladder, Stainless Steel - Removable
- Lighting, 24V
- Oil Changer System - Engines & Generator

Hull & Deck

- Bow Rail, 316 Stainless Steel w/Welded Stanchions, Intermediate Rails & Life Lines
- Cleats, Custom Sea Ray® Thru-Bolted Bollard Style - Stainless Steel (8)
- Deck Fill Plates, Stainless Steel
- Deck Rails, 316 Stainless Steel
- Gel Coat - Arctic White
- Graphics, Striping
- Handrails, 316 Stainless Steel
- Hatch, Deck Vent - Translucent w/Locks & Sky Screen Cover (Trapezoid)
- Hull Windows, Color-Matched Aluminum (8 Fixed)
- Lights, Navigation
- Resin, High Performance Vinylester
- Rub Rail, PVC w/Stainless-Steel Insert
- Portlights, Stainless Steel (2 Opening, 4 Fixed)
- Skylight, Flush Mount w/Retractable Sunshade - Salon
- Stringer System, Fiberglass
- Sun Pad, Forward Deck w/Adjustable Backrests, Cover & Built In Drink Holders
- Swim Platform, Extended w/Concealed Stainless-Steel Four Step Swim Ladder
- Thru Hull Fittings, Stainless Steel
- Vent System, Engine Room w/Stainless Steel Grills
- Windshield, Tempered/Tinted Curved Glass w/Electric Front Vent & Side Windows
- Windshield Washer System
- Windshield Wipers, 24V

Generator

- 21.5 kW Onan Diesel (240V/60 Cycle) w/Sound Shield, Remote Start, Muffler, Closed Cooling,
- Fuel Filter, Seacock & Seawater Strainer

Water System

- Freshwater Washdown Spigots w/Hoses - Transom, Engine Room & Anchor Locker
- Pressure Water System w/24V Pump & Charcoal Filtration System
- Shower, Cockpit - Single-Lever Hot & Cold w/Stainless-Steel Door, Braided Hose & Ergonomic
- Shower Wand
- Water Heater, 240V (20 Gallon)
- Water Inlet, Dockside
- Water Manifold System

Waste System

Central Drain System

- Head System (VacuFlush) - Electric
- Holding Tank Level Indicators - MDP & Heads
- Holding Tank w/Dockside Pump Out (68 Gallon)
- Sump Box w/Automatic Pump & Hinged Service Lid

Underwater Gear

- Bonding System w/Zinc Hull Plate
- Seacocks on All Underwater Fittings
- Seawater Strainers
- Trim Tabs, Hydraulic (Integrated w/Zeus® System)
- Trim Tabs, Interceptor System w/Control Panel & Automatic Function

Additional Features

- Teak floor in Cockpit
- Teak table in Cockpit
- Dual Radio Antennas
- Digital Vessel Identification system
- Professional air intake vents (No salt water entering engine room; \$20K per piece)

- Improved TV location in Cockpit
- 3 Camera's in Engine Room
- Sun protection on bow
- Custom made Roof extension, aft
- Custom made, aft cockpit enclosure with glass and white covers
- Strap for master bedroom door and improved door latch
- Wireless RF TV remote
- Blue hull lights
- New 2012 Water Heat Exchanger in Generator
- New Batteries, December '13
- Hard bottom Dinghy with 9.9HP Mercury outboard engine (used only for a few hours)
- Only roughly 350 hours on both main engines
- All maintenance and upgrades performed by licensed technicians from Cummins and Marine Max.
- Total of 6 years extended warranty, Brunswick Passport Premier Package
- Maintained extremely well, looks like new.

Exclusions

While every effort was made to list all pertinent included equipment aboard the Searay 54 there are some personal belongings aboard. Prospective purchasers should assume any item not specifically mentioned herein will not convey at closing.

Exclusions

Owner's personal belongings.

Disclaimer

The Company offers the details of this vessel or yacht in good faith but cannot guarantee or warrant the accuracy of this information nor warrant the condition of the vessel. A buyer should instruct his representatives, agents, or his surveyors, to investigate such details as the buyer desires validated. This vessel or yacht is offered subject to prior sale, price change, or withdrawal without notice.

PHOTOS

Aft Deck Seating



Aft Deck Seating



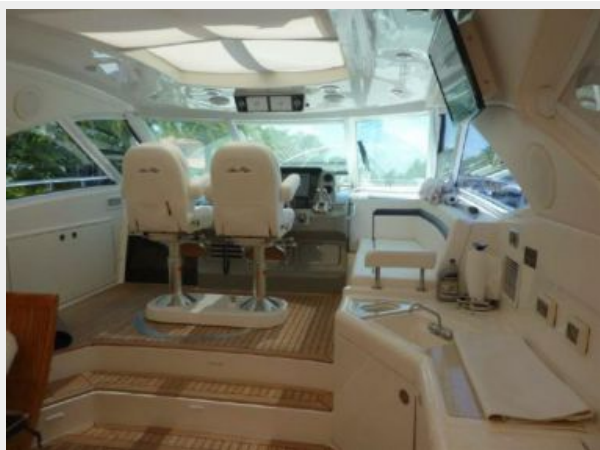
Seating



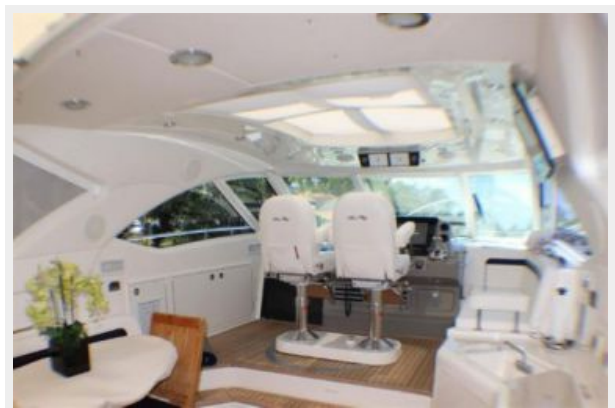
Seating



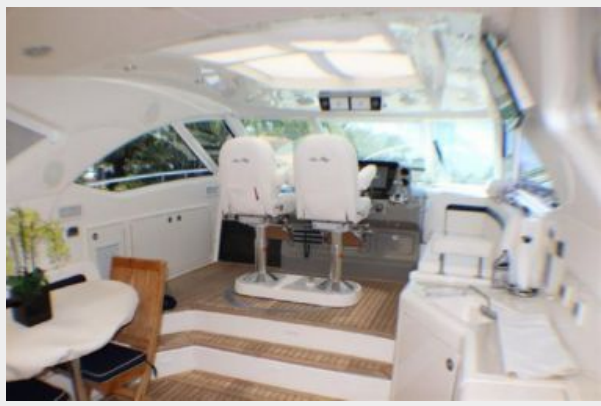
helm



helm



cockpit



TV



Sink/ Refrigerator/ Grill



Cockpit Tv



Steps to the helm



Helm Seats



Helm



Helm



Helm



Helm Seats



Cabin



TV/ Stereo System



Electric pannel



Salon



Salon/ Dinning



Salon



Salon/ Vip Forward Cabin



Vip / Forward Cabin



Vip / Forward Head



Salon



Salon Tv



Salon Seating



Salon



Master Cabin



Master Cabin/Head



Master Cabin / Washer & Dryer Combo



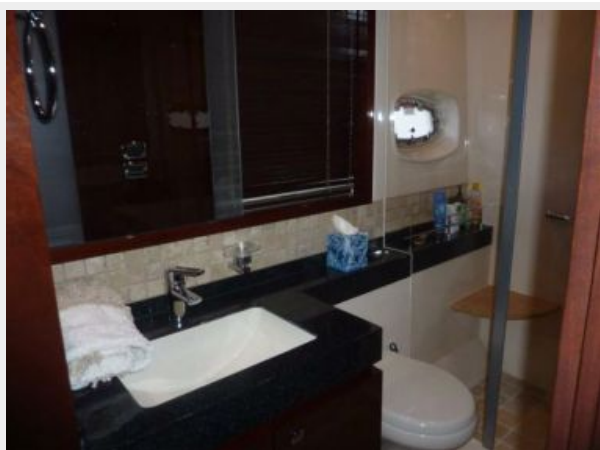
Washer & Dryer



Master Head Aft



Master Head Aft



Cockpit Seating Area



Custom Roof Extension / Custom Made , Aft enclosure



Engine Room



Engine room



Engine room



Engine Room/ Racors



Sea Ray 54



Sea Ray 54



CONTACTS

Andrey Shestakov, leading yacht broker of the sales department of Shestakov Yacht Sales Inc. Shestakov Yacht Sales Inc., the official representative of the Miami/Fort Lauderdale FL headquarters.

Contact details

Email: andrey@shestakovyachtsales.com

Web: shestakovyachtsales.com/en/

Telephones

USA: +1(954)274-4435

Office hours

Monday – Saturday: **9:00 - 21:00** EDT

Sunday: **closed**

Address



Harbour Towne Marina, 850 NE 3rd St,
STE 213, Dania, FL 33004