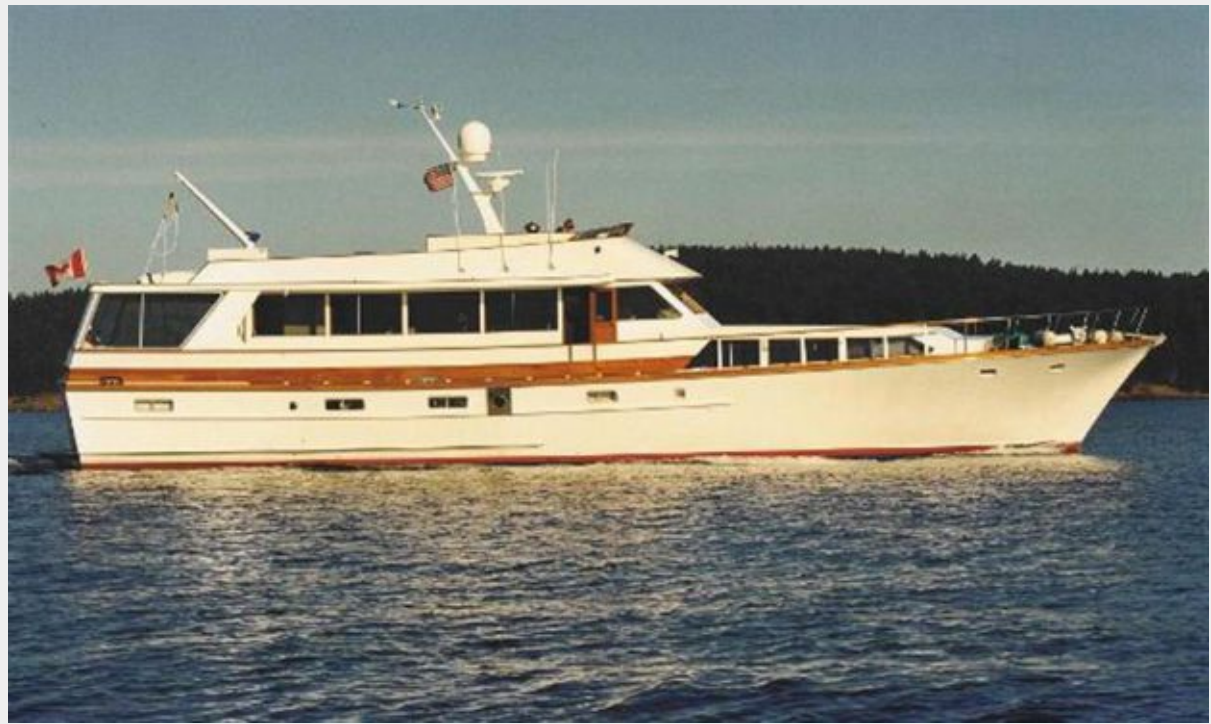


MONK MCQUEEN 76 FLUSHDECK MOTORYACHT — MONK MCQUEEN



Builder: MONK MCQUEEN

Year Built: 1980

Model: Motor Yacht

Price: PRICE ON APPLICATION

Location: Canada

LOA: 76' 0" (23.16m)

Beam: 18' 0" (5.49m)

Min Draft: 5' 6" (1.68m)

Cruise Speed: 12 Kts. (14 MPH)

Max Speed: 16 Kts. (18 MPH)

Our experienced yacht broker, Andrey Shestakov, will help you choose and buy a yacht that best suits your needs **Monk McQueen 76 Flushdeck Motoryacht — MONK MCQUEEN** from our catalogue. Presently, at **Shestakov Yacht Sales Inc.**, we have a wide variety of yachts available on our sale's list. We also work in close contact with all the big yacht manufacturers from all over the world.

If you would like to buy a yacht **Monk McQueen 76 Flushdeck Motoryacht — MONK MCQUEEN** or would like help answering any questions concerning purchasing, selling or chartering a yacht, please call **+1(954)274-4435**

TABLE OF CONTENTS

TABLE OF CONTENTS	2
SPECIFICATIONS	5
Basic Information	5
Dimensions	5
Speed, Capacities and Weight	5
Accommodations	5
Hull and Deck Information	5
Engine Information	6
DETAILED INFORMATION	7
Wheelhouse	7
Salon	7
Aft Deck	7
Galley	8
Forward Cabins	8
VIP Cabin	8
Master	8
Engine Room	8
Exclusions	9
Disclaimer	9
PHOTOS	10
Ground Tackle	10
Port Side Deck	10
Power Plugs	10
Aft Deck	10
Aft Deck to swimstep	11
Aft Deck to Boat Deck	11
Fire Axe	11
Boat Deck	11

Flybridge Console	11
New Antenna Mast	12
Flybridge Settee	12
New helm console	12
Equipment Manuals	12
Binders 1	12
Binders 2	12
Bar	13
Galley aft	13
Galley port side	13
Galley port/aft	13
Galley Elect Load Center	13
Galley dining	13
Forward machine room access	14
Stair to forward machine room	14
Furuno retractable SONAR	14
Watermaker	14
Bow Thruster Hydraulics	14
Bow Thruster Diesel/Hydraulic Power	14
Forward Head	15
3 berth V-cabin	15
Forward head detail	15
Starboard Forward Cabin	15
VIP Guest Cabin	15
VIP Head	15
VIP shower with settee	16
Engine room	16
Port Main	16
Port Main detail	16

Starboard Main detail 1	16
Starboard Main detail 2	16
Starboard Main detail 3	17
ER Port/Aft	17
Kabola Furnace	17
ER Port/Fwd	17
Kabola zone valves	18
Work Bench	18
Video Camera system	18
Master	18
Lazarette Stowage	19
Master Head	19
Spare Propellers	19
Spare Prop detail	19
Transome	20
CONTACTS	21
Contact details	21
Telephones	21
Office hours	21
Address	21

SPECIFICATIONS

Basic Information

Category: Motor Yacht

Sub Category: Classic

Model Year: 1980

Year Built: 1980

Country: Canada

Dimensions

LOA: 76' 0" (23.16m)

LWL: 73' 0" (22.25m)

Beam: 18' 0" (5.49m)

Min Draft: 5' 6" (1.68m)

Clearance: 29' 0" (8.84m)

Speed, Capacities and Weight

Cruise Speed: 12 Kts. (14 MPH)

Max Speed: 16 Kts. (18 MPH)

Displacement: 110000 Pounds

Water Capacity: 300 Gallons

Holding Tank: 200 Gallons

Fuel Capacity: 1170 Gallons

Accommodations

Total Cabins: 4

Total Berths: 7

Total Heads: 3

Hull and Deck Information

Hull Material: Wood

Engine Information

Engines: 2

Manufacturer: Detroit Diesel

Model: 8V71

Engine Type: Inboard

Fuel Type: Diesel

DETAILED INFORMATION

Wheelhouse

Updated electronics, rich hardwood finishes, leather upholstery and 360-degree visibility give the wheelhouse a certain feel of command and luxury. The aft side of the wheelhouse features a marble counter and two handsome wood columns that offer an open view all the way through the salon and enclosed aft deck. Side doors port and starboard give fast and easy access from the helm area to the side decks. Generous chart table, chart storage and touch screen navigation make piloting a pleasure.

- Garmin GPS Map 5212 – Touchscreen/Plotter/Radar/Depth/Video with cameras
- Redundant navigation on PC with Nobeltec and touchscreen display
- Comnav Autopilot
- Redundant Furuno Radar with 10” display
- Forward looking sonar
- Wind speed and direction
- Two VHF radios
- Custom Alarm panel
- SeaTel Wave Call
- Three leather stools and mounted, adjustable Captain’s chair

Salon

Rich, warm finishes offer comfortable seating for eight to ten. To starboard a 12' marble buffet offers generous storage and large “pop-up” flat screen TV. Aft, a luxurious marble wet bar with mirrored cabinet is ideal for entertaining large groups of guests.

- Retractable TV
- Wine cooler
- Bar sink
- Roman Shades
- Stereo

Aft Deck

Fully enclosed with glass and wing doors, this comfortable space features seating for five to seven with a custom “pop-up” table that converts from coffee table to dining height. Easy access to side decks, swim-grid and dinghy deck and flybridge above. A cabinet with sink and refrigerated drink box is situated forward for added convenience.

Galley

Remodeled in 2010 with Stainless steel appliances, new granite counters, bamboo hardwood floors and copious storage, this galley is well equipped and a chef's delight for preparing meals while cruising. A large dining/storage table is ideal for food preparation and more intimate dining.

- Dishwasher
- Fisher Paykel refrigerator/freezer
- Stove
- Oven
- Frigidaire stainless steel sink with disposal

Forward Cabins

Forward of the galley and to starboard is a guest cabin with a double berth plus a single bunk with a closet, vanity and sink. To port is a nicely finished head with shower and vanity. Forward is the V-berth cabin with three single bunks, and ample storage in closets, shelves and drawers.

VIP Cabin

Down four steps and aft of the Galley is the full beam VIP Guest Cabin featuring a full walk around queen bed. A generously sized and recently remodeled ensuite head features a shower with built in seat and a large vanity.

Master

Stairs in the salon lead through the convenient laundry and linen storage area to the full beam master stateroom. Walk-around King-sized bed with generous counters, drawers and closets for owners' storage. New headliner and mirrors along with a large head with shower and vanity keep the spaces feeling luxurious.

Engine Room

Economical and reliable Detroit Diesel 8V71 main engines are meticulously maintained in the large easy access, full standing headroom, walk-through engine room. It is a real pleasure to view an engine room that has received as much attention and care. Easy access for inspections and maintenance of engines, generators, diesel furnace, batteries and fuel systems.

- Northern Lights 20kW generator (new 2010)
- Northern Lights 12 kW generator
- Kabola Hydronic Furnace (new 2010)

- Outback Inverter
- 2 Ratelco battery chargers 12VDC – 32VDC
- Toolbox and parts storage
- Fuel transfer system with gallon meter

Exclusions

Owner's personal belongings.

Disclaimer

The Company offers the details of this vessel or yacht in good faith but cannot guarantee or warrant the accuracy of this information nor warrant the condition of the vessel. A buyer should instruct his representatives, agents, or his surveyors, to investigate such details as the buyer desires validated. This vessel or yacht is offered subject to prior sale, price change, or withdrawal without notice.

PHOTOS

Ground Tackle



Port Side Deck



Power Plugs



Aft Deck



Aft Deck to swimstep



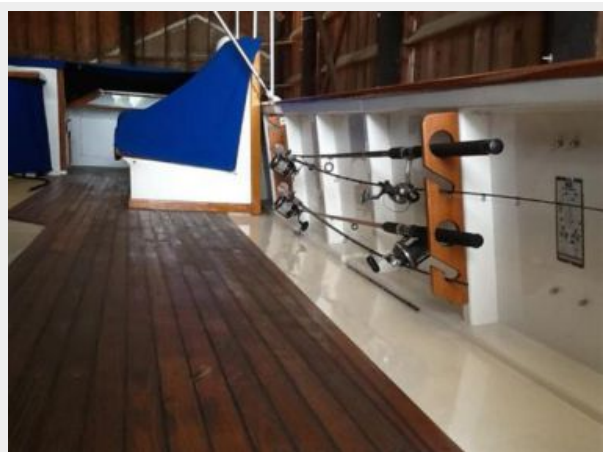
Aft Deck to Boat Deck



Fire Axe



Boat Deck



Flybridge Console



Flybridge Settee



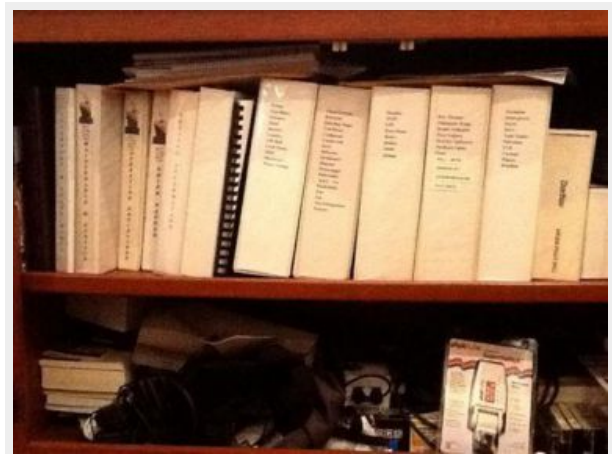
New Antenna Mast



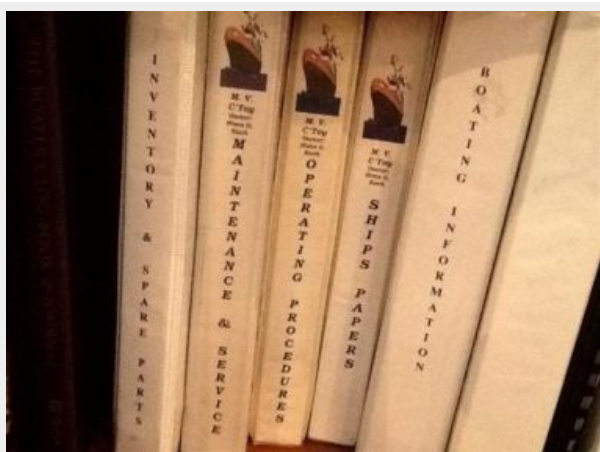
New helm console



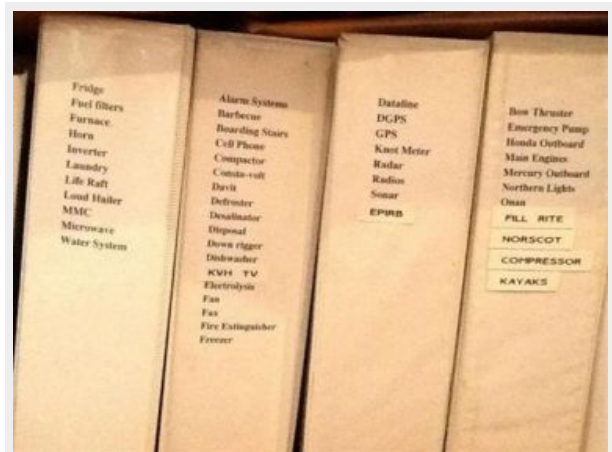
Equipment Manuals



Binders 1



Binders 2



Bar



Galley aft



Galley port side



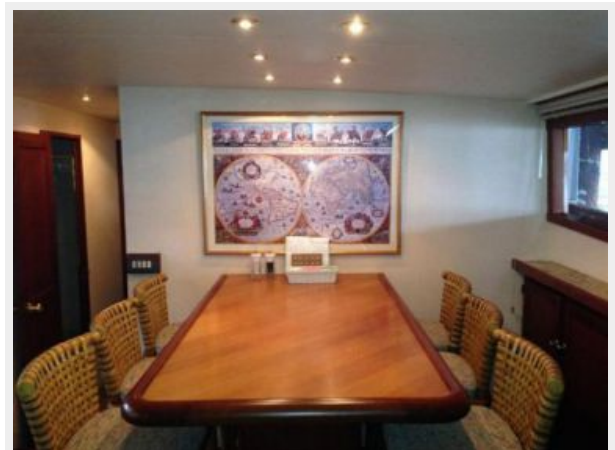
Galley port/aft



Galley Elect Load Center



Galley dining



Forward machine room access



Stair to forward machine room



Watermaker



Furuno retractable SONAR



Bow Thruster Hydraulics



Bow Thruster Diesel/Hydraulic Power



3 berth V-cabin



Forward Head



Forward head detail



Starboard Forward Cabin



VIP Guest Cabin



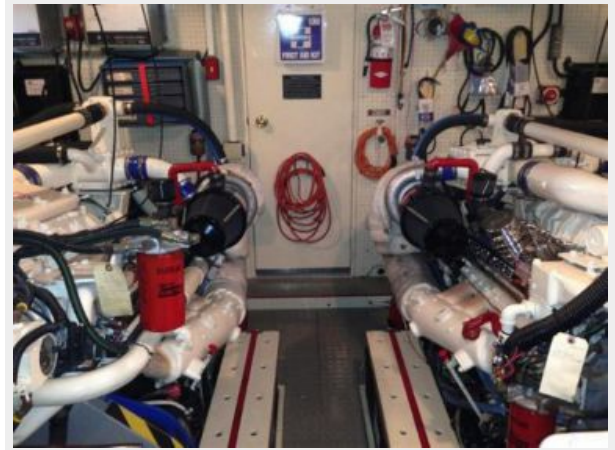
VIP Head



VIP shower with settee



Engine room



Port Main



Port Main detail



Starboard Main detail 1



Starboard Main detail 2



Starboard Main detail 3



ER Port/Aft



ER Port/Fwd



Kabola Furnace



Kabola zone valves



Work Bench



Video Camera system



Master



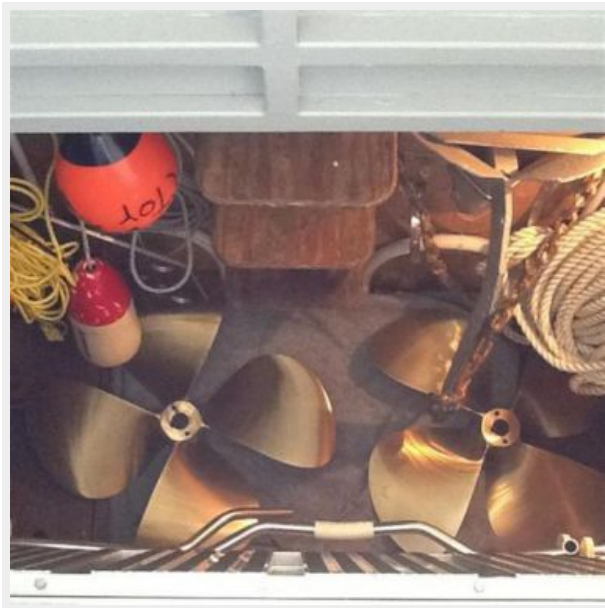
Master Head



Lazarette Stowage



Spare Propellers



Spare Prop detail



Transome



CONTACTS

Andrey Shestakov, leading yacht broker of the sales department of Shestakov Yacht Sales Inc. Shestakov Yacht Sales Inc., the official representative of the Miami/Fort Lauderdale FL headquarters.

Contact details

Email: andrey@shestakovyachtsales.com

Web: shestakovyachtsales.com/en/

Telephones

USA: +1(954)274-4435

Office hours

Monday – Saturday: **9:00 - 21:00** EDT

Sunday: **closed**

Address



Harbour Towne Marina, 850 NE 3rd St,
STE 213, Dania, FL 33004