

NORDLUND — NORDLUND



Builder: NORDLUND

Year Built: 2014

Model: Motor Yacht

Price: PRICE ON APPLICATION

Location: United States

LOA: 111' 0" (33.83m)

Beam: 25' 0" (7.62m)

Max Draft: 5' 11" (1.80m)

Cruise Speed: 17 Kts. (20 MPH)

Max Speed: 21 Kts. (24 MPH)

Our experienced yacht broker, Andrey Shestakov, will help you choose and buy a yacht that best suits your needs **Nordlund — NORDLUND** from our catalogue. Presently, at Shestakov Yacht Sales Inc., we have a wide variety of yachts available on our sale's list. We also work in close contact with all the big yacht manufacturers from all over the world.

If you would like to buy a yacht **Nordlund — NORDLUND** or would like help answering any questions concerning purchasing, selling or chartering a yacht, please call **+1(954)274-4435**

TABLE OF CONTENTS

TABLE OF CONTENTS	2
SPECIFICATIONS	3
Overview	3
Basic Information	3
Dimensions	3
Speed, Capacities and Weight	4
Accommodations	4
Hull and Deck Information	4
Engine Information	4
DETAILED INFORMATION	5
Specifications Overview	5
Accommodations	6
Mechanical Equipment	7
Galley	8
Electrical Equipment	8
Deck Equipment	8
First Class Fishing	9
Entertainment Systems	9
Electronics	10
Exclusions	11
Disclaimer	11
PHOTOS	12
CONTACTS	19
Contact details	19
Telephones	19
Office hours	19
Address	19

SPECIFICATIONS

Overview

The new Nordlund 111 Yachtfisher is designed for transoceanic exploration. Its 3,500 mile range will take you from tropical bays to forested glacier fed inlets in remarkable comfort.

Accommodations for 6 include a master and two guest staterooms, each with private bath. Crew quarters for 6 include a captain's stateroom with private bath, plus two crew twin berth staterooms.

- Custom Designed
- Teak Interior
- (2) 200 Gal Bait Tanks
- 7,000 Gal Fuel Tanks
- 3,500 Mile Range for extended voyages
- Luxurious & Comfortable accommodations for 11 including crew
- Mid-Ship Master Suite
- Large refrigeration
- Dive set-up
- World Class Electronics Package
- Waste Treatment Onboard
- 3,000 Gal. Fresh Water/Day from (2) watermakers
- At Rest Stabilizers

Basic Information

Category: Motor Yacht

Model Year: 2014

Year Built: 2014

Country: United States

Dimensions

LOA: 111' 0" (33.83m)

Beam: 25' 0" (7.62m)

Max Draft: 5' 11" (1.80m)

Speed, Capacities and Weight

Cruise Speed: 17 Kts. (20 MPH)

Max Speed: 21 Kts. (24 MPH)

Displacement: 265000 Pounds

Water Capacity: 800 Gallons

Holding Tank: 420 Gallons

Fuel Capacity: 7000 Gallons

Accommodations

Total Cabins: 3

Total Heads: 3

Captain Cabin: True

Crew Cabin: 3

Crew Sleeps: 6

Crew Heads: 2

Hull and Deck Information

Hull Material: Fiberglass

Engine Information

Engines: 2

Manufacturer: Caterpillar

Model: C32 Acert

Engine Type: Inboard

Fuel Type: Diesel

DETAILED INFORMATION

Specifications Overview

OVERVIEW:

- (2) Caterpillar C32 ACERT 1,600 HP engines
- (2) ZF 3055 3.28:1 reduction gears
- (2) 65 KW Northern Lights Generators M1064T2
- 7,000 Gallons Fuel Tanks 3,500 mile range
- 800 gallons water
- (2) 1,800 GPD FCI watermakers
- 100 gallons lube oil
- 100 gallons waste oil
- 20 Ton Tecnicold air conditioning with fresh air make-up
- ABT Trac STAR (stabilization at rest)
- Jastram Steering
- 4.5" Aquamet 22 HS -engine & rudder shafts
- (6) Steering Stations
- (5) live bait wells
- 4,000 lb. Steelhead davit
- Headhunter waste treatment system
- Delta "T" Engine Room Fan System
- Double Anchor System
- (5) Custom Freezers- 160 cu. ft. total capacity
- Eskimo Ice Machine
- Dive Compressor
- (2) 100 AMP Glendinning Cord Reelers
- Custom Designed for Worldwide Sportfishing and Cruising
- Teak Interior

DESIGN/BUILD INFO

- Naval Architect: R. Edwin Monk Architect PLLC
- Structural Design: Tim Nolan Marine Design
- Interior Design: Mary Flores- Yacht Interiors
- Electronics: Long Beach Marine Electronics
- Builder: Nordlund Boat Company, Inc.

FISHING With 5 live bait tanks, Eskimo Ice Machine, 6 steering stations and a fish spotting control tower, the 111 is ready for tournament level sportfishing at the drop of a lure. The advanced hull design will keep you steady in the deep, while the 5'11" draft gives you access to shallow waters. Use the 4,000 lb davit to launch your shoreboat for exploring, snorkeling, scuba diving or light tackle fishing. **EXTENDED CRUISING** Everything you need for extended journeys

has been considered. Freshwater generation of 3,000 gallons per day, 5 custom freezers totaling 160 cu ft, ample refrigeration capacity, at-rest stabilizers, onboard waste treatment and a 20 ton air conditioning system. Twin 65 KW Northern Lights gensets serve your power needs, and a built-in dive compressor makes scuba adventures easier. **20+ KNOT SPEED** When you find that you need to be somewhere else rather soon, the twin 1,600 HP Cat engines will propel you along at speeds over 20 knots. Or set your speed to cruise at 15-16 knots of time allows.

Stabilizing systems ensure a smooth ride underway and at anchor. **SMART ELECTRONICS** Integrated electronics on the 111 will keep you safe, aware of your surroundings, and in touch with the world. At your command are radar, sonar, weather sensor, autopilot, gyro, VHF, thermal imaging camera, CCTV, vessel monitoring, navigation computers, satellite phone, satellite TV, fishfinder and more. **SALON AND DINING** The spacious salon is the boat's focal point for entertaining, dining and relaxing. The all teak interior exhibits the exquisite curves, details and beautiful grains of fine wood craftsmanship. Recessed lighting overhead plus side accent lighting bring this center of activity to life, with seating that invites great conversations, a dining area that is elegantly intimate and views that are panoramic.

GALLEY & DINING The galley has a large view window above the double Stainless Steel sink that is beautifully finished in marble and curved teak. The countertops with marble backsplash wrap around to an all electric cooktop with vented hood. A full size double door refrigerator. An electric oven is just inside the entry to the galley. Cabinets below and above provide plenty of storage space. The large open area "see through" between the galley and the salon ensures that conversations continue and everyone stays well connected plus it can be closed off with the push of button.

FLYBRIDGE The covered fly bridge can be accessed from the pilothouse or the aft deck. It has 3 helm chairs, a full helm control station, a settee, refrigerator, sink and stairs to the "crow's nest" control tower. A 4,000 lb davit and shoreboat storage area are aft. **MAIN DECK** Enter through the transom door, past acrylic bait tanks and up twin curved stairs to the covered deck area. Entering through a large electric door - - Inside is the salon and dining area, with the galley forward. The pilothouse has 3 helm chairs, a settee, port and starboard exterior doors and outside stairs to the flybridge. **LOWER DECK** The master stateroom has a king size bed, desk, sitting area, storage and a private bath with twin head shower. Both guest staterooms have two beds, storage and a private bath. The captain's stateroom has a large bed, desk, storage and a private bath. The two crew staterooms have two beds, storage and access to a shared bath. Aft of the engine room is a workbench, day head with shower, frozen fish hold, diving locker, lazarette and stairs to the cockpit.

Accommodations

Entering from the aft deck is the spacious salon with a state-of-the-art entertainment center to starboard and wet bar to port. The wet bar features a sink, icemaker, and beverage refrigerator. Just forward is the salon seating area with sofa, (2) chairs, coffee table, and (2) end tables. Opposite is the unique dining area with a dinette on one side of the larger table and formal chairs

on the opposite side. Forward is the galley, stairs leading down to the guest staterooms and a companionway leading to the pilothouse.

The Pilothouse features a watch berth, raised leather settee, port and starboard side deck doors, (3) helm seats, the primary helm, and tremendous visibility.

Stairs from the pilothouse lead down to the crew accommodations. There is a companionway with a sub-zero refrigerator and additional stairs further down to the Laundry/Storage area. Forward and aft of the of laundry room are vast storage areas. The first crew accommodation you come to is the captain's stateroom with ensuite head, double berth, IntelliSea control monitor, Furuno NavNet monitor, Samsung TV and BlueRay player, and DirecTV SAT receiver. Opposite the captain's stateroom is a crew stateroom with (2) single berths. A share head is forward followed by the third crew stateroom with (2) single berths. All crew and guest heads have heated floors.

The guest accommodations are accessed just forward of the salon by a stairway to starboard. The guest companionway includes (2) refrigerator drawers and a storage area. Forward are (2) mirror guest staterooms with single berths and ensuite heads. Aft is the full beam master stateroom with a king berth, sofa, (4) larger portlights, walk-in closet, ensuite head with heater floors and large shower, entertainment center, and a desk/study area with privacy pocket doors.

The shop area and engine room are accessed from the cockpit. Down a few steps to the port is a head with shower and the main shop area with stack W/D, full size refrigerator, electrical control panel, main electrical panels, (3) larger Freezers with drawers, (2) access point to the lazarette, and a water tight door to the spacious engine room.

Mechanical Equipment

- Kahlenberg Air Compressor
- Trac 65hp hydraulic bow thruster
- ABT "AT REST" stabilizers (20X Fins)
- Delta T engine room ventilation system
- Fire suppression system
- Jastrom Steering system with back-up pump
- Head Hunter Mach 5 fresh water pumps
- Racor fuel filters
- Reverso fuel prime pump
- Viking fuel transfer pump
- Headhunter Superbowl heads
- Headhunter waste treatment system with back-up pump
- Kallenberg horns
- (2) Torrid 40 gallon stainless steel hot water heaters
- Strong Seal dripless shaft seals
- Engine Block Heaters

- (2) FCI watermakers (1750 GPD) with UV Sterilizer
- Chilled water air conditioning system with (4) chillers
- Dive compressor
- Central Vacuum System
- Fresh Air Makeup fan

Galley

- Thermador Oven
- Thermador Microwave Oven
- Thermador 5-burner stove with stainless steel hood
- Double stainless steel sink
- Bosch dishwasher
- Viking trash compactor
- Sub-zero double refrigerator
- Disposal and Instant Hot
- Marble counter tops and backsplash
- Bomar small galley window opening
- Granite flooring

Electrical Equipment

- (2) 65kW Northern Lights generators
- (2) NewMar 24 volt battery chargers
- (2) generator battery chargers
- (2) Outback 3500 watt inverters
- (2) 8D AGM generator start batteries
- (4) 8D AGM engine start batteries
- (6) 8D AGM service batteries
- (2) Isolated 8D AGM batteries and 12 volt electronics charger
- (2) Glendinning cablemasters
- (2) Charles Marine isolation transformer ISO boost 100
- (1) Charles Marine isolation transformer ISO boost 50
- (2) 100 amp shore power connections
- (1) 50 amp shore power connection

Deck Equipment

- The Cal Deck features docking stations port and starboard, refrigerator, settee with overhead air conditioning, (4) overhead rod lockers, and teak decking.
- The spacious Cockpit includes a transom door, teak caprail, teak decking, various water

connections, large bait tanks, Furuno fishfinder, sink, storage, and steps port and starboard leading up to the Cal Deck.

- 60 Gallon Gas tank and pump built into the transom
- Cockpit fresh and salt water hose reeler
- Anchor locker fresh and salt water hose reeler
- Boat deck fresh water hose reeler
- The flybridge is accessed from a starboard exterior stairwell. Features include a helm station with (3) Stidd helm seats, large L-shaped settee with table, beverage refrigerator, icemaker, storage cabinet with sink, centerline ladder leads up to the crow's nest, hardtop with lighting and speakers. Aft is the boat deck with a sizable storage cabinet, 4000lb. Steelhead davit, and aft control station.
- Drum-Style 28x22 anchor windlass with 1000' of 5/8" galvanized cable and 100' of 5/8" galvanized chain, 350 lb. Forfjord anchor
- Muir 4000 CMS windlass with 1000' of 7/8" single braid polyester rode, 100' of 1/2" chain, and 110 lb. Bruce Anchor.
- Bow Pulpit down facing lights for anchor retrieval
- Underwater lights
- Alexseal Matterhorn White exterior paint with Alexseal Granite Gray stripes.

First Class Fishing

- Bow and Cockpit Bait Well
- (2) Larger 200 gallon Cockpit Bait Tanks
- Aft, Forward, and Side Flood Lights
- Eskimo Ice Machine
- Port and Starboard electric downrigger connections
- Crab Pot puller control (hydraulic)
- Furuno Navnet Sounder display
- Fishwell in swim platform
- Frozen Fish Hold (85 Cubic Feet)
- Frozen Fish Hold (66 Cubic Feet) Drawer System accessed from Shop
- (2) Gaff storage tubes
- (4) overhead rod lockers on Cal Deck
- Cockpit speakers to communicate with Pilothouse and Flybridge
- Cockpit Bolster Pads

Entertainment Systems

Premium Crestron controlled entertainment system by Definitive Audio of Seattle

SALON:

- Pioneer VSX-50

- Surround Sound Speakers
- Samsung 60" LED/LCD TV

CREW STATEROOMS:

- (2) Samsung 22" LED/LCD TV
- (2) Samsung Blu-Ray Player
- (2) Satellite HD Receiver

GUEST STATEROOMS:

- (2) Samsung 22" LED/LCD TV
- (2) Samsung Blu-Ray Player
- (2) Satellite HD Receiver

MASTER STATEROOM:

- Pioneer VSX-50
- Satellite HD receiver
- Samsung 55" LED/LCD TV
- Surround Sound Speakers

Electronics

PILOTHOUSE

- Complete Furuno sportfishing and cruising electronics package
- (5) Nauticamp 19" Glass Bridge Displays with Master Control Panel
- Furuno FR2127BB 25KW BlackBox Commercial Radar System
- Furuno FCV1200BB Fishfinder with Repeater in Fishing Cockpit
- Furuno CH300BB Dual Frequency Sonar
- Furuno NavNet 3D BlackBox System, Radar, Sounder, Plotter
- Furuno FA 150 Class A AIS System with separate Pilot Plug
- (4) Furuno RD33 Remote Displays with PB200 Weather Sensor
- Simrad AP80 Autopilot System with (5) Jog Levers and (3) control heads
- Simrad AP24 Back-Up Autopilot System
- Simrad GC80 Gyro
- Dual Icom 604 VHF Radios
- Furuno LH3000 hailer
- Flir M-625XP Thermal Imaging Camera
- Samsung CCTV System with 5 PTZ Cameras & DVR
- IntelliSea Vessel Monitoring System
- Dual Navigation Computers with MaxSea and back-up hard drives
- (3) Furuno 19" Sunlight Bright Displays
- Furuno NavNet 3D BlackBox System, Radar, Sounder, Plotter

- Sonar Display & Control
- Simrad AP70 Autopilot
- Flir Control
- Icom 604 VHF Radio/Hailer

FLYBRIDGE

- (3) Furuno 19" Daylight Bright Displays
- Furuno NavNet Black Box System, Radar, Sounder, Plotter
- Sonar Display and Control
- Simrad AP70 Autopilot
- Flir Control
- Icom 504 VHF radio

CROWS NEST

- Furuno MFD12 NavNet 3D System, Radar, Sounder, Plotter
- Simrad AP70 Autopilot
- Icom 504 VHF Radio
- Icom M504 Hailer

OTHER

- KVH V7iP VSAT System
- KVH HD7 HDTV Satellite TV System
- Iridium Satellite Phone System
- Panasonic Telephone System
- General Alarm System
- HP DeskJet 3520 Printer

Exclusions

Owner's personal belongings.

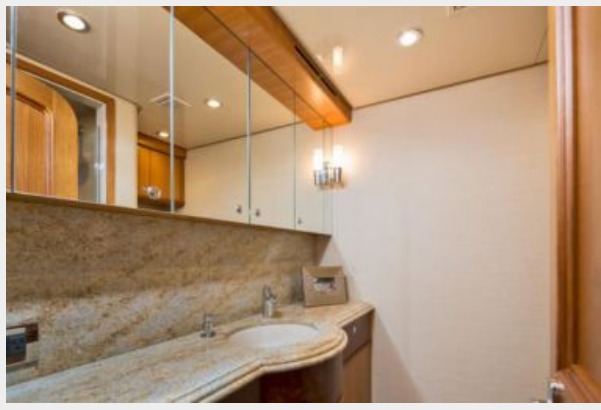
Disclaimer

The Company offers the details of this vessel or yacht in good faith but cannot guarantee or warrant the accuracy of this information nor warrant the condition of the vessel. A buyer should instruct his representatives, agents, or his surveyors, to investigate such details as the buyer desires validated. This vessel or yacht is offered subject to prior sale, price change, or withdrawal without notice.

PHOTOS



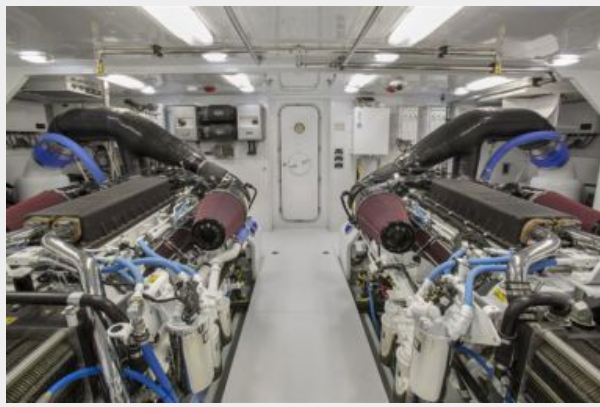












CONTACTS

Andrey Shestakov, leading yacht broker of the sales department of Shestakov Yacht Sales Inc. Shestakov Yacht Sales Inc., the official representative of the Miami/Fort Lauderdale FL headquarters.

Contact details

Email: andrey@shestakovyachtsales.com

Web: shestakovyachtsales.com/en/

Telephones

USA: +1(954)274-4435

Office hours

Monday – Saturday: **9:00 - 21:00** EDT

Sunday: **closed**

Address



Harbour Towne Marina, 850 NE 3rd St,
STE 213, Dania, FL 33004