

# 40FT 2007 CRANCHI ATLANTIQUE 40 — CRANCHI



**Builder:** CRANCHI

**LOA:** 40' 0" (12.19m)

**Year Built:** 2007

**Beam:** 12' 7" (3.84m)

**Model:** Motor Yacht

**Price:** PRICE ON APPLICATION

**Location:** United States

Our experienced yacht broker, Andrey Shestakov, will help you choose and buy a yacht that best suits your needs 40ft 2007 Cranchi Atlantique 40 — CRANCHI from our catalogue. Presently, at Shestakov Yacht Sales Inc., we have a wide variety of yachts available on our sale's list. We also work in close contact with all the big yacht manufacturers from all over the world.

If you would like to buy a yacht 40ft 2007 Cranchi Atlantique 40 — CRANCHI or would like help answering any questions concerning purchasing, selling or chartering a yacht, please call +1(954)274-4435

# TABLE OF CONTENTS

TABLE OF CONTENTS	2
SPECIFICATIONS	4
Basic Information	4
Dimensions	4
Speed, Capacities and Weight	4
Hull and Deck Information	4
Engine Information	4
DETAILED INFORMATION	5
Salon	5
Lower Helm	5
Galley	5
Master Stateroom	5
Guest Accommodations	6
DECK & HULL	6
Fly Bridge	7
Electrical	7
Mechanical	8
Exclusions	8
Disclaimer	8
PHOTOS	9
port profile	9
stern	9
fly bridge	9
fly bridge	9
fly bridge	9
wet bar	9
bridge helm	10
cockpit	10

cockpit	10
cockpit	10
swim platform	10
Cranchi	11
salon	11
lower helm	11
salon	11
salon	11
lower helm	11
master state room	12
master forward	12
head	12
guest state room	12
guest stateroom TV	12
head	12
galley	13
galley	13
stbd engine	13
engine room	13
port engine	13
port engine	13
Generator	14
CONTACTS	15
Contact details	15
Telephones	15
Office hours	15
Address	15

---

# SPECIFICATIONS

---

## Basic Information

---

**Category:** Motor Yacht

**Model Year:** 2007

**Year Built:** 2007

**Country:** United States

## Dimensions

---

**LOA:** 40' 0" (12.19m)

**Beam:** 12' 7" (3.84m)

## Speed, Capacities and Weight

---

**Displacement:** 19315 Pounds

**Water Capacity:** 93 Gallons

**Fuel Capacity:** 278 Gallons

## Hull and Deck Information

---

**Hull Material:** Fiberglass

## Engine Information

---

**Engines:** 2

**Manufacturer:** Volvo Penta

**Model:** D6 EVC/DP-H

**Engine Type:** Inboard

**Fuel Type:** Diesel

---

## DETAILED INFORMATION

---

### Salon

---

- KVH Satellite TV-**UPGRADE**
- Amtico Flooring-**UPGRADE**
- Double width stainless steel cabin entry door
- Opening slider side windows
- Leather “L” shaped dinette to starboard
- Lower Helm Station to starboard
- Cabinet with TV/DVD Player to port
- Built in love seat to port
- Cherry wood table
- Stereo/CD

### Lower Helm

---

- Raymarine E80 color GPS chart plotter
- Raymarine Radar
- Raymarine depth sounder with alarm
- Raymarine Autopilot
- Raymarine VHF Radio

### Galley

---

- Amtico flooring
- Sandstone counter tops
- Double basin stainless steel sink
- Isotherm refrigerator/freezer
- Microwave oven
- Two burner stove top

### Master Stateroom

---

- En suite Head
- Large double bed
- Drawer Storage
- Dressing table with mirror
- Twin wardrobes
- Reading lights

- Mirror
- Power socket
- Overhead hatch

---

## Guest Accommodations

---

- Twin berths with storage underneath
- Cabinet with drawer
- TV/DVD
- Wardrobe with mirror
- (2) opening portholes
- Reading lights
- Power socket
- Cabinet with drawer
- Inspection panel for dashboard

### Guest Head:

- Separate Stall Shower
- Molded Sink
- Vanity
- Medicine Cabinet
- Opening port

---

## DECK & HULL

---

- Foredeck Sun Lounge Pads
- Aft Facing Seat at Bow
- Plas-Teak decking on: **UPGRADE**
- Swim platform
- Cockpit sole
- Bridge deck
- 1000 pound anchor windlass
- Bow pulpit
- Anchor chain
- Bruce anchor
- Fender Storage Racks
- (2) Bow cleats
- (2) Spring cleats
- (4) Stern cleats
- Stainless Steel handrails
- Stainless Steel rub rail
- Stainless Steel Bow Rail

- Generous Walk Around Decks
- Fuel and water deck fills
- Double fuel tank air vents
- Water tank air vent
- Navigation lights
- Molded non-skid gel coat top decks

---

## Fly Bridge

---

- Ladder to fly bridge with teak steps
- Access hatch with gas strut support
- Double helm seat
- Companion seat
- Double aft seat
- Wet bar w/sink and refrigerator
- Plas-Teak Decking-**UPGRADE**

### Fly Bridge Helm:

- Raymarine Autopilot
- Chart Plotter
- Raymarine VHF Radio
- Double lever engine control
- Hydraulic steering
- Wood steering wheel
- Rudder angle indicator
- Complete engine instruments
- Engine instrument lighting
- Ritchie magnetic compass
- Horn control
- Navigation light control
- Hydraulic trim tabs control
- Anchor Windlass control
- 12 volt charging socket

---

## Electrical

---

- 6 KW Fischer Panda Generator
- 50 Amp/220Volt shore power
- Glendenning Shore Power Cable Reel
- Galvanic isolator
- AC Battery parallel switching

- Converter (Battery Charger)
- AC/DC power distribution panel
- (1) Group 27 Generator Start Battery
- (2) 8D engine start/house batteries

---

## Mechanical

---

- Bow Thruster-**UPGRADE**
- Stainless steel shafts and props in AB2 alloy
- Rudders in AB2 alloy
- Oil-hydraulic Propeller shaft glands
- Propeller Shaft A.V.S. joint (anti-vibration system)
- (3) Automatic fire extinguishers
- Macerator Head Discharge Pump
- Sea Strainers-Engines/Gen/AC
- Trim Tabs
- 370 HP Volvo D6 Diesels w/510 Hours
- Engines and Generator Fully Serviced 50 hours ago

---

## Exclusions

---

Owner's personal belongings.

---

## Disclaimer

---

The Company offers the details of this vessel or yacht in good faith but cannot guarantee or warrant the accuracy of this information nor warrant the condition of the vessel. A buyer should instruct his representatives, agents, or his surveyors, to investigate such details as the buyer desires validated. This vessel or yacht is offered subject to prior sale, price change, or withdrawal without notice.



# PHOTOS

**port profile**



**stern**



**fly bridge**



**fly bridge**



**fly bridge**



**wet bar**



**bridge helm**



**cockpit**



**cockpit**



**cockpit**



**swim platform**





**Cranchi**



**salon**



**lower helm**



**salon**



**salon**



**lower helm**



**master state room**



**master forward**



**head**



**guest state room**



**guest stateroom TV**



**head**





**galley**



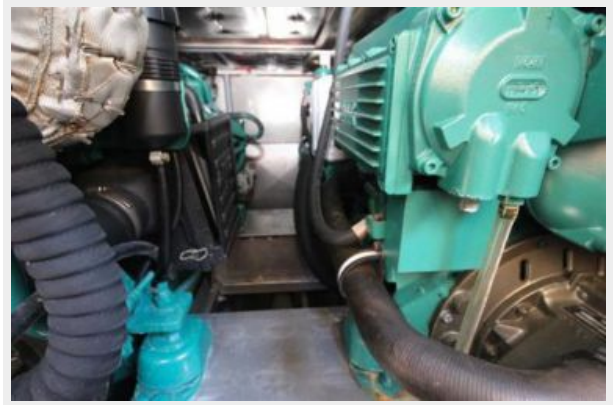
**galley**



**stbd engine**



**engine room**



**port engine**



**port engine**



## Generator



# CONTACTS

---

Andrey Shestakov, leading yacht broker of the sales department of Shestakov Yacht Sales Inc. Shestakov Yacht Sales Inc., the official representative of the Miami/Fort Lauderdale FL headquarters.

## Contact details

---

Email: [andrey@shestakovyachtsales.com](mailto:andrey@shestakovyachtsales.com)

Web: [shestakovyachtsales.com/en/](http://shestakovyachtsales.com/en/)

## Telephones

---

USA: +1(954)274-4435

## Office hours

---

Monday – Saturday: **9:00 - 21:00** EDT

Sunday: **closed**

## Address

---



Harbour Towne Marina, 850 NE 3rd St,  
STE 213, Dania, FL 33004