

33FT 2006 RIVIERA 33 FLYBRIDGE — RIVIERA



Судостроитель: RIVIERA

Год постройки: 2006

Модель: Катер для спортивной рыбалки

Цена: ЦЕНА ЯХТЫ ПО ЗАПРОСУ

Местонахождение: United States

Длина общая: 33' 0" (10.06m)

Ширина: 12' 7" (3.84m)

Макс. осадка: 3' 3" (0.99m)

Крейс. скорость: 25 Kts. (29 MPH)

Макс. скорость: 32 Kts. (37 MPH)

Купить 33ft 2006 Riviera 33 Flybridge — RIVIERA а также выбрать подходящую вам яхту из нашего каталога яхт вам поможет опытный яхтенный брокер Андрей Шестаков. На сегодняшний день компания Shestakov Yacht Sales Inc. имеет большое количество яхт в собственном списке продаж, а также тесно сотрудничает со всеми крупными яхтенными производителями по всему миру.

Для того чтобы купить яхту 33ft 2006 Riviera 33 Flybridge — RIVIERA а также проконсультироваться по любому вопросу связанному с покупкой, продажей, чартером яхт позвоните по телефону **+7(918)465-66-44**.

ОГЛАВЛЕНИЕ

ОГЛАВЛЕНИЕ	2
ХАРАКТЕРИСТИКИ	5
Основная информация	5
Размеры	5
Скорость, вместимость и масса	5
Корпус и палуба	5
Информация о двигателе	6
ПОДРОБНОЕ ОПИСАНИЕ	7
Accommodations	7
Master Stateroom	7
Galley	7
Head	8
Cockpit	8
Flybridge	9
Electronics & Navigation	9
DECK & HULL	9
Electrical	10
Mechanical	10
Independent Reviews	11
Исключения	11
Отказ от ответственности	11
ФОТОГРАФИИ	13
Port Profile	13
Stern	13
Cockpit	13
Cockpit Aft	13
Flybridge Seat	13
Chart Plotter	14

Helm Seating	14
electronics	14
electronics	14
Deck	14
Shiny Gelcoat	14
locker	15
Windlass	15
fishbox	15
deck fitting	15
livewell	15
Storage	15
Salon Forward	16
Settee-Converts	16
Salon Aft	16
Salon Stbd	16
galley	16
galley	16
Master Staeroom	17
head	17
Cabin Layout	17
Deck Layout	17
Port Engine	17
Port Engine	17
stbd engine	18
Starboard Engine	18
Bilge	18
КОНТАКТЫ	19
Контактная информация	19
Телефоны	19

Время работы	19
Адрес	19

ХАРАКТЕРИСТИКИ

Основная информация

Тип судна: Катер для спортивной рыбалки

Модельный год: 2006

Год постройки: 2006

Страна: United States

Размеры

Длина общая: 33' 0" (10.06m)

Ширина: 12' 7" (3.84m)

Макс. осадка: 3' 3" (0.99m)

Скорость, вместимость и масса

Крейс. скорость: 25 Kts. (29 MPH)

Крейсерская скорость поворота: 3300 Kts.

Макс. скорость: 32 Kts. (37 MPH)

Макс. скорость поворота: 3600 Kts.

Водоизмещение: 19800 Pounds

Вместимость воды: 103 Gallons

Объем топливного бака: 264 Gallons

Корпус и палуба

Материал корпуса: Fiberglass

Информация о двигателе

Двигатели: 2

Производитель: Volvo

Модель: D6 310

Тип двигателя: Inboard

Тип топлива: Diesel

ПОДРОБНОЕ ОПИСАНИЕ

Accommodations

Entering the salon you will notice that headroom is excellent. Large opening forward and side windows provide great views when seated at the portside U-shaped lounge/dinette. Cream soft goods and satin cherry wood lend a warm glow. The saloon's starboard side has a built-in cherry wood sideboard with mock-walnut liner and various glass, bottle and storage lockers and drawers. There is an overhead flat screen TV facing back to the lounge/settee.

Going forward, the galley is two steps down and to port. There is a huge locker beneath the galley sole to store supplies during extended trips.

Continuing forward and through the passageway is the oversized head that is comparable to those found on a much larger vessels; head has two doors with private access from the stateroom or through the passageway.

The stateroom has a large double berth, generous hanging locker and abundant drawer space. There is a storage locker with hydraulic pistons under bed.

Master Stateroom

- Hanging locker with lighting
- Hatch - square white with screen
- Mirror on bedhead
- Queen walk around berth with innerspring mattress
- Storage under berth
- Entrance to head

Galley

- Access hatch to storage under galley floor
- Electric cooktop, single element and extraction fan
- Faucet to galley sink
- Grab rail down steps to cabins
- Granicoat benchtop & sink
- High quality vinyl flooring
- Lighting, overhead (DC)
- Microwave oven
- Receptacle, AC duplex

- Refrigerator DC/ AC, 1 door
- Storage cabinets & drawers

Head

- Entrance door & Ensuite door to forward cabin
- Extraction Fan
- Lighting, overhead (DC)
- Mirror
- Porthole, opening
- Receptacle, AC duplex
- Shower stall with glass partition & door
- Automatic sump pump
- Toilet roll holder
- Towel holders
- Vanity cabinet
- Vacuflush toilet
- holding tank with Y valve-overboard discharge
- Deck fitting for dockside pump out

Cockpit

- Cockpit Shade
- Bait Well with Aquarium window
- Padded Cockpit Combing
- Access ladder to flybridge
- Molded hatch opening gutters drain overboard
- Cockpit floor plate for future game chair or table
- Hatches with heavy-duty stainless steel latches
- Lazarette storage and bilge access
- Door to Saloon - tinted tempered glass
- Manual bilge pump for engine room in cockpit locker
- Hot & cold Fresh water shower
- Grab rails to assist access to side decks
- Sink with hot & cold tap
- Hatch for access to engine room
- Lighting-overhead & courtesy
- Refrigerated cabinet portside top loading with lid
- Steps to side deck port & starboard
- Storage bin in cockpit floor with pump-out
- Salt Water wash down
- Transom door opens outward with lift up gate

Flybridge

- Hard Top
- Pilot and Copilot Seats
- Drink Holders
- Floor Hatch covers cockpit access (safety)
- Windshield
- Lounge seating forward w/ storage below
- Rails on rear of flybridge w/weather cloths (safety)
- Storage locker under Brow
- 12VDC feed for electronics
- Courtesy Lights
- Clarion Stereo
- Refrigerator

Electronics & Navigation

- Raymarine Fish Finder
- Raymarine GPS
- Raymarine Radar
- Raymarine Chart Plotter
- Raymarine E 120 Display
- Icom VHF Radio
- Compass

DECK & HULL

- Swim Platform
- Anchor Windlass with foot switch & remote at helm
- Anchor (35lb)
- Anchor locker with watertight bulkhead
- Sea water wash at anchor locker
- Bow Pulpit- stainless anchor roller thru pulpit
- Cleats (8)- stainless steel
- Hand Rails-Side Deck port & starboard above windows
- Rub rail with stainless steel insert strip
- Propellers, nibral four blade
- Rudders, stainless steel stocks, aluminium bronze blades Shafts stainless
- PSS dripless Propeller Shaft Seals
- Struts aluminium bronze
- Trim tabs, Electro-hydraulic
- Acoustic & thermal insulation

- Ball valves with stainless steel handles and 2 hose clamps on all through hull fittings on or below the water line
- Bilge pumps, auto & manual over-ride x 3

Electrical

- Onan 5kw Generator-400 hours
- Generator Sound Box
- 220v/50 amp shore service
- Batteries - start, house(2)and generator start
- Battery banks individually isolated
- Battery charger, automatic-40 AMP
- Battery paralleling system
- Bonding system to all thru hull fittings
- Galvanic isolator
- AC power distribution panel w/ volt & amp meters
- Wires coded, numbered & loomed

Mechanical

- Emergency rudder locking pins
- Engine anti-vibration mounts
- Engine fresh water cooling system
- Engine mounted oil filters
- Engine room flowcoated (fire retardant Gel Coat)
- Engine room lighting (DC)
- External & internal seawater strainers for main engines Fibreglass under water discharge exhaust system for engines
- Water Heater
- Fuel shut-off valves with emergency remote to cockpit
- Fuel tank gauge at helm
- Fuel tank, GRP coated in fire retardant flow coat
- Hydraulic steering
- Propellers, nibral four blade (2)
- Rudders, stainless steel stocks, aluminium bronze blades with zinc anodes
- Shafts duplex stainless (2) dripless PSS seals
- Struts aluminium bronze
- Trim tabs, Electro-hydraulic
- Fuel filters/ water separator for engines & generator
- 16000 BTU Air conditioning
- 90 Gal auxilliary fuel tank

Independent Reviews

"Our test boat was equipped with the standard common-rail Volvo D6 diesel engines turning 310 hp apiece, which were more than adequate propulsion-wise. At wide open throttle with nearly a full tank of fuel and 40 gallons of water aboard, the GPS topped out at 33.0 mph (3,600 rpm) while burning 35.4 gallons per hour. At a more refined cruising speed of 25.5 mph (3,000 rpm), the boat only used 22.6 gph. Factoring in a 10 percent safety reserve and 264-gallon fuel capacity means the 33 has an effective range of 233 nautical miles."

"The 33 likes to cruise at about 23 knots or 3,300 rpm; at that speed, she burns 27.6 gph. She topped out around 26 knots, or 3,600 rpm, and I was surprised to find that there was little vibration and acceptable noise levels (about 76 dB inside the salon with the door shut). She gets up to speed quickly and smoothly, which speaks to the efficiency of her hull; in fact, I had a hard time determining the precise moment we were on plane because she barely noses up."

"The bench seat forward of the helm up on the flybridge. Awesome... the comfort and positioning of the seat and the fact that the mini-fridge was half an arm's length behind me. It feels like you're on the flybridge of a 40' not a 33' "

"when I stood in the galley, I was eye-level with anyone who might have been sitting in the salon "

"From the engine room to the windlass, I never felt unsteady on my feet or uncomfortable traversing from one part of the boat to another"

"I wasn't chewing on diesel fumes the entire ride. In fact, I never even smelled any. With the exhaust funneled completely underwater and away from the boat, there simply wasn't anything nasty left to inhale"

Исключения

При продаже яхты исключаются личные вещи владельца.

Отказ от ответственности

Компания предоставляет описание судна или яхты добросовестно, но не может гарантировать точность этой информации, а также не ручается за техническое состояние. Покупатель должен проинструктировать своих агентов или оценщиков

исследовать представленную информацию более подробно, по собственному желанию. Продажа судна или яхты, изменение цены или снятие с продажи будет происходить без предварительного уведомления.

ФОТОГРАФИИ

Port Profile



Stern



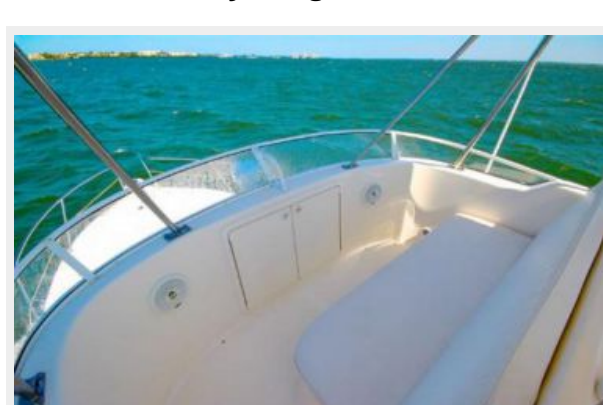
Сockpit



Cockpit Aft



Flybridge Seat



Helm Seating



Chart Plotter



electronics



electronics



Deck



Shiny Gelcoat



locker



Windlass



deck fitting



fishbox



livewell



Storage



Salon Forward



Settee-Converts



Salon Aft



Salon Stbd



galley



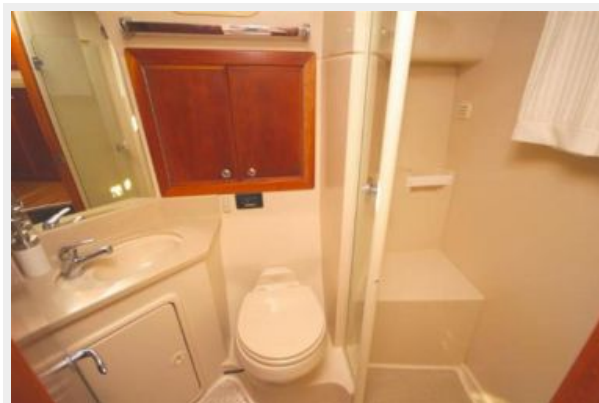
galley



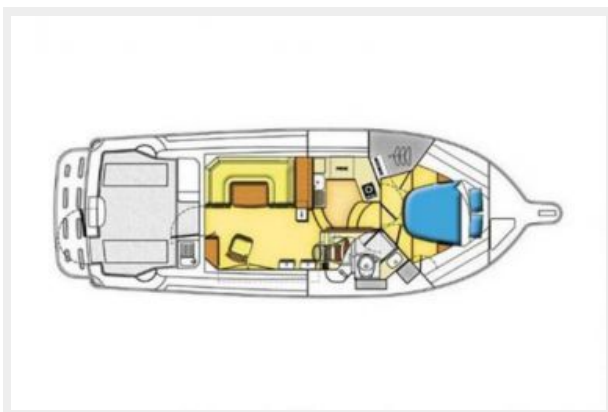
Master Staeroom



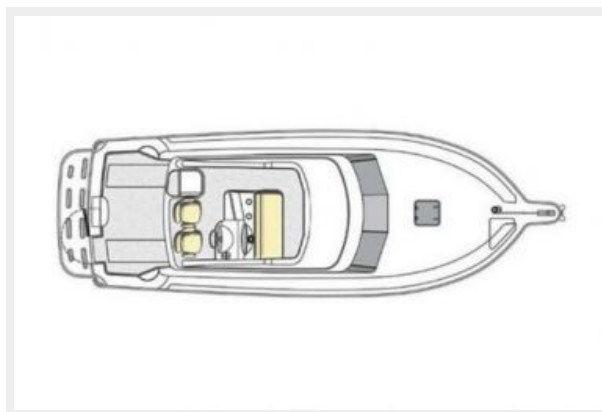
head



Cabin Layout



Deck Layout



Port Engine



Port Engine



stbd engine



Starboard Engine



Bilge



КОНТАКТЫ

Андрей Шестаков (Andrey Shestakov) – ведущий яхтенный брокер отдела продаж яхт и судов компании Shestakov Yacht Sales Inc. Официальный представитель Shestakov Yacht Sales Inc. для русскоговорящих клиентов в центральном офисе компании в Майами/Форт Лодердейл/Флорида/США.

Контактная информация

Email: andrey@shestakovyachtsales.com

Web: shestakovyachtsales.com

Телефоны

Краснодарский край: **+7(918)465-66-44**

США, Майами, Флорида: **+1(954)274-4435**

Время работы

Понедельник – Суббота: **9:00 - 21:00**
EDT

Воскресенье: **Закрито**

Адрес



Harbour Towne Marina, 850 NE 3rd St,
STE 213, Dania, FL 33004