

MIRABELLA III — CONCORDE YACHTS, LTD



Builder: [CONCORDE YACHTS, LTD](#)

Year Built: 1994

Model: Cruising Sailboat

Price: PRICE ON APPLICATION

Location: Spain

LOA: 131' 3" (40.00m)

Beam: 29' 11" (9.10m)

Max Draft: 12' 10" (3.90m)

Cruise Speed: 10 Kts. (12 MPH)

Max Speed: 12 Kts. (14 MPH)

Our experienced yacht broker, Andrey Shestakov, will help you choose and buy a yacht that best suits your needs **Mirabella III — CONCORDE YACHTS, LTD** from our catalogue. Presently, at Shestakov Yacht Sales Inc., we have a wide variety of yachts available on our sale's list. We also work in close contact with all the big yacht manufacturers from all over the world.

If you would like to buy a yacht **Mirabella III — CONCORDE YACHTS, LTD** or would like help answering any questions concerning purchasing, selling or chartering a yacht, please call **+1(954)274-4435**

TABLE OF CONTENTS

TABLE OF CONTENTS	2
SPECIFICATIONS	4
Overview	4
Basic Information	4
Dimensions	4
Speed, Capacities and Weight	4
Accommodations	5
Hull and Deck Information	5
Engine Information	5
DETAILED INFORMATION	6
Accommodations	6
Equipment	6
Engines	6
Performance & Capabilities	6
Galley and Appliances	6
Air Con & Generators	6
Exclusions	6
Disclaimer	6
PHOTOS	7
Foredeck and Bow Pulpit	7
Deck Details	7
Starboard Mid Deck	7
Dining, Stairs, Salon	8
Stern	8
Salon	8
Study	8
Forward Guest Stateroom and Companionway	8
Study	8

Starboard Guest Stateroom 1 and Ensuite Head	9
Forward Stateroom and Ensuite Head	9
Crew Lounge	9
General Arrangement	10
At Anchor in Guadeloupe	11
At Anchor in Guadeloupe	11
CONTACTS	12
Contact details	12
Telephones	12
Office hours	12
Address	12

SPECIFICATIONS

Overview

Originally built by Concorde Yachts in Thailand, Mirabella III is a Bruce Farr design. Mirabella III is a classic, stylish superyacht offering high class performance and enviable comfort in an opulent and sophisticated interior, filled with warm woods and welcoming neutral colors. The transom features a door with bathing steps which can also double as a unique golf tee. Mirabella III is able to accommodate up to 10 guests in 5 cabins including a master cabin and a VIP cabin each with double beds, two convertible cabins that can have either a King or twin bed configuration and one twin cabin. .

Basic Information

Category: Cruising Sailboat

Sub Category: Cruising Ketch

Model Year: 1994

Year Built: 1994

Refit Year: 2010

Country: Spain

Dimensions

LOA: 131' 3" (40.00m)

LWL: 119' 6" (36.40m)

Beam: 29' 11" (9.10m)

Max Draft: 12' 10" (3.90m)

Speed, Capacities and Weight

Cruise Speed: 10 Kts. (12 MPH)

Max Speed: 12 Kts. (14 MPH)

Gross Tonnage: 225 Pounds

Water Capacity: 1162.3570288 Gallons

Fuel Capacity: 4173.9184216 Gallons

Fuel Consumption: 18.49204364 Gallons

Accommodations

Total Cabins: 5

Total Berths: 10

Sleeps: 10

Total Heads: 6

Captain Cabin: True

Crew Cabin: 3

Crew Berths: 6

Crew Sleeps: 6

Crew Heads: 4

Hull and Deck Information

Hull Material: GRP

Deck Material: Teak

Hull Configuration: Monohull

Hull Designer: Bruce Farr

Exterior Designer: Jill Lubin

Interior Designer: Jill Lubin

Engine Information

Engines: 1

Manufacturer: Luggar

Model: L6140

Engine Type: Inboard

Fuel Type: Diesel

DETAILED INFORMATION

Accommodations

Mirabella III can accommodate 10 guests in 5 cabins including a Master cabin and a VIP Cabin each with double beds, two convertible cabins that can have either a King or twin bed configuration and one twin cabin. She provides 3 crew cabins and captain's quarters.

Equipment

Bow Thrusters: Seaway Powell 65 + 40kw

Engines

Manufacturer: Luger Model: L6140 Power: 550hp/410kW Propulsion: Single Screw

Performance & Capabilities

Max Speed: 15 knots Cruising Speed: 11 knots Fuel Capacity: 21,600 L 4,751.33 USG

Galley and Appliances

Stove, refrigerator, dishwasher, microwave, washing machine, clothes dryer

Air Con & Generators

Air Conditioning: Marine Air Systems Domestic Generators: Northern Lights

Exclusions

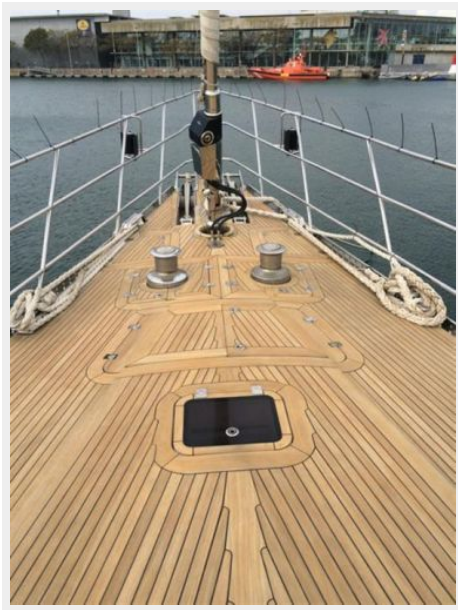
Owner's personal belongings.

Disclaimer

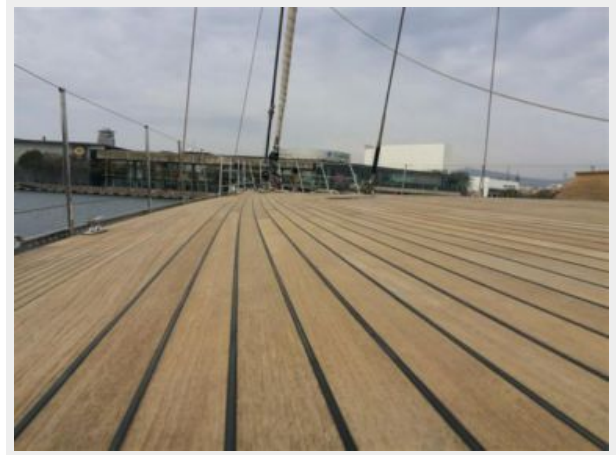
The Company offers the details of this vessel or yacht in good faith but cannot guarantee or warrant the accuracy of this information nor warrant the condition of the vessel. A buyer should instruct his representatives, agents, or his surveyors, to investigate such details as the buyer desires validated. This vessel or yacht is offered subject to prior sale, price change, or withdrawal without notice.

PHOTOS

Foredeck and Bow Pulpit



Deck Details



Starboard Mid Deck



Stern



Dining, Stairs, Salon



Salon



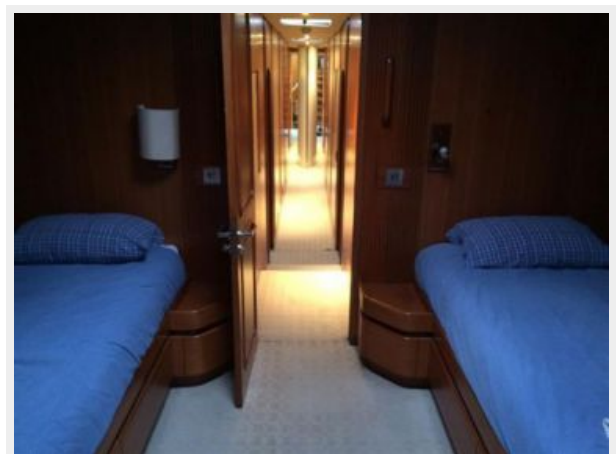
Study



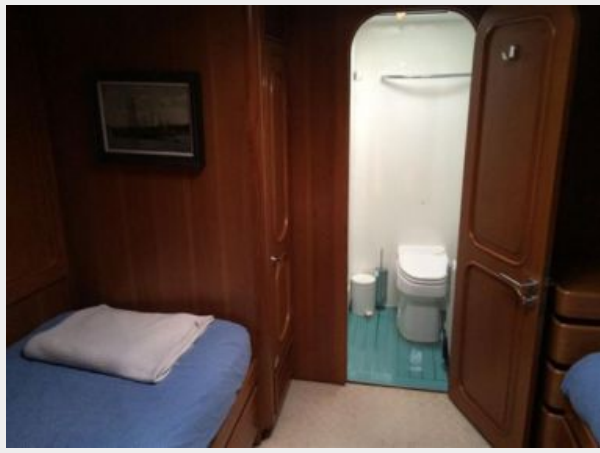
Study



Forward Guest Stateroom and Companionway



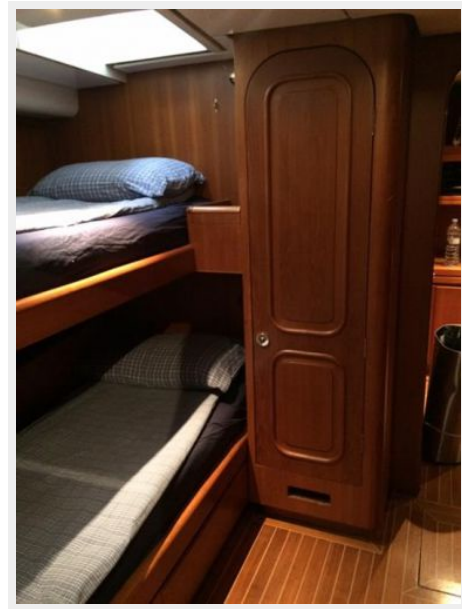
Forward Stateroom and Ensuite Head



Starboard Guest Stateroom 1 and Ensuite Head

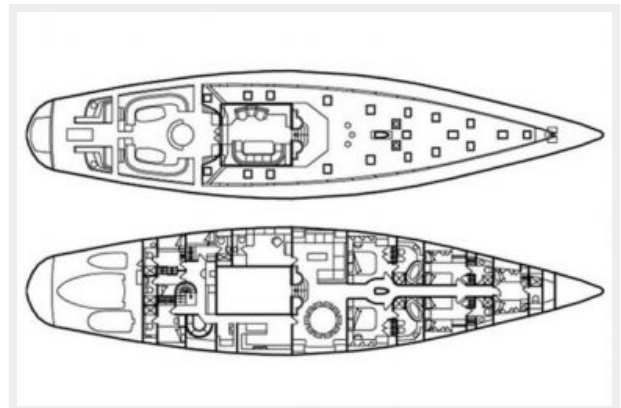


Crew Lounge





General Arrangement





At Anchor in Guadeloupe



At Anchor in Guadeloupe



CONTACTS

Andrey Shestakov, leading yacht broker of the sales department of Shestakov Yacht Sales Inc. Shestakov Yacht Sales Inc., the official representative of the Miami/Fort Lauderdale FL headquarters.

Contact details

Email: andrey@shestakovyachtsales.com

Web: shestakovyachtsales.com/en/

Telephones

USA: +1(954)274-4435

Office hours

Monday – Saturday: **9:00 - 21:00** EDT

Sunday: **closed**

Address



Harbour Towne Marina, 850 NE 3rd St,
STE 213, Dania, FL 33004