

DOCTOR'S ORDERS — SEA RAY



Builder: SEA RAY

Year Built: 2011

Model: Cruiser

Price: PRICE ON APPLICATION

Location: United States

LOA: 45' 0" (13.72m)

Beam: 13' 2" (4.01m)

Min Draft: 3' 10" (1.17m)

Our experienced yacht broker, Andrey Shestakov, will help you choose and buy a yacht that best suits your needs **Doctor's Orders — SEA RAY** from our catalogue. Presently, at Shestakov Yacht Sales Inc., we have a wide variety of yachts available on our sale's list. We also work in close contact with all the big yacht manufacturers from all over the world.

If you would like to buy a yacht **Doctor's Orders — SEA RAY** or would like help answering any questions concerning purchasing, selling or chartering a yacht, please call **+1(954)274-4435**

TABLE OF CONTENTS

TABLE OF CONTENTS	2
SPECIFICATIONS	4
Overview	4
Basic Information	4
Dimensions	4
Speed, Capacities and Weight	4
Accommodations	5
Hull and Deck Information	5
Engine Information	5
DETAILED INFORMATION	6
Salon	6
Galley	6
Master Stateroom	6
Master Head	6
Mid-Stateroom/Media Room	7
Helm	7
Electronics	7
Electrical System	8
Engine Room	8
Cockpit	8
Decks	9
Exclusions	9
Broker's Remarks	9
Exclusions	9
Disclaimer	9
PHOTOS	10
CONTACTS	16
Contact details	16

Telephones	16
Office hours	16
Address	16

SPECIFICATIONS

Overview

"Doctor's Orders" is a lightly used Captain maintained low hour vessel that has never been slept on. All service is up to date and she is in ready to enjoy condition.

- Cockpit Air Conditioning/Heating
- Beautiful Horizon Colored Hull
- DSS Satellite TV System
- Wood Flooring Salon & Galley
- Cockpit Refrigerator
- Sunroof Shade in Hard Top
- Flat Screen TV in Cockpit & Electric Grill
- Wood Interior Blinds
- Zeus Pod Drives with Joystick Control & Skyhook
- Extended Transferable Warranty

Please contact us for more details. Motivated Seller!

Basic Information

Category: Cruiser

Sub Category: Express

Model Year: 2012

Year Built: 2011

Country: United States

Vessel Top: Hardtop

Dimensions

LOA: 45' 0" (13.72m)

Beam: 13' 2" (4.01m)

Min Draft: 3' 10" (1.17m)

MFG Length: 45' 5" (13.84m)

Speed, Capacities and Weight

Displacement: 27205 Pounds

Water Capacity: 70 Gallons

Holding Tank: 42 Gallons

Fuel Capacity: 292 Gallons

Accommodations

Total Cabins: 1

Total Heads: 1

Hull and Deck Information

Hull Material: Fiberglass

Engine Information

Engines: 2

Manufacturer: Cummins

Model: Zeus QSB 380

Engine Type: Inboard

Fuel Type: Diesel

DETAILED INFORMATION

Salon

- Wood Blinds
- LED Lighting
- 120V Outlets
- L-Shaped Sofa w/Storage-Converts to Bed
- AM/FM CD , Sirius Satellite Receiver
- Floor Storage
- Dark Wood Flooring
- 12V Accessory Outlets
- Accent Pillow
- iPod Interface Docking Station
- Amplifier, Sub Woofer
- Dinette Table

Galley

- Coffeemaker
- Stainless Steel Microwave
- Storage Drawers
- Trash Receptacle
- Solid Surface Countertop w/Sink
- Stainless Steel Refrigerator/Freezer
- 2 Burner Stove

Master Stateroom

- Full-Size Island Style, electrically Actuated Extension & Posturepedic Backrest w/Visco Elastic Foam Mattress w/Storage Below
- Solid Wood Privacy Door
- Built In Storage
- Accent Lighting
- (2) Hanging Locker
- 22" Flatscreen w/DVD Player

Master Head

- Tile Floors

- Robe Hook
- Storage Drawers
- Towel Bar
- Separate Shower Port Side
- VacuFlush Head
- Speakers
- Mirrored Cabinet
- Vanity w/Solid Surface countertop, Sink, Faucet & Storage
- Shower w/Seat, & Adjustable Shower Wand

Mid-Stateroom/Media Room

- Privacy Curtain
- Hanging Locker
- (2) Ottomans Dual Purpose Tops (Cushions or Cockpit Tables)
- Storage Cabinets
- Entertainment System
- Blue LED Accent Lighting
- Conversation Pit Seating Converts to Bed

Helm

- Double Wide Flip Lip Helm Seat
- Battery Parallel Switch
- Dual Trumpet Air Horns
- Zeus Joystick Control
- Electronic Shift & Throttle controls
- Auto Pilot
- Raymarine E 120 GPS/Radar
- ACR Spotlight Control
- High Water Alarms
- Compass
- Instrument Panel
- Power Steering
- SmartCraft System Vessel View Display
- VHF Radio
- Stereo Remote
- Helm AC & Heat

Electronics

- Raymarine E-120
- In Motion Satellite TV
- Auto Pilot
- Chartplotter/Radar/Sonar
- VHF
- Sky Hook

Electrical System

- 11.5 Onan Diesel Generator
- Shore Power Cable Master
- AC/DC Systems

Engine Room

- Battery Charger
- Twin Zeus Drives QSB 380 HP
- Automatic Fire Suppression System
- Blowers
- Sea Water Strainers
- Water Heater
- Engine Start Stop controls
- Racor Fuel Filter System
- Bilge Pumps

Cockpit

- Sunpad
- Built In Storage
- Flat Screen T.V.
- Aft Curtain Enclosure
- Kenyon Electric Grill
- Cockpit Carpet
- 120V Accessory Plug In
- Wrap Around Seating
- Cockpit Table
- Cockpit Air Conditioning & Heating
- Built In Ice Bucket
- Isotherm Refrigerator
- Trash Receptacle
- Retractable Sunroof

Decks

- Electric Windlass
- Cockpit Hot & Cold Shower
- Remote Spotlight
- Dockside Water Inlet

Exclusions

Seller's Personal Items

Broker's Remarks

Great yacht in like new condition with extended warranty.

Exclusions

Owner's personal belongings.

Disclaimer

The Company offers the details of this vessel or yacht in good faith but cannot guarantee or warrant the accuracy of this information nor warrant the condition of the vessel. A buyer should instruct his representatives, agents, or his surveyors, to investigate such details as the buyer desires validated. This vessel or yacht is offered subject to prior sale, price change, or withdrawal without notice.

PHOTOS

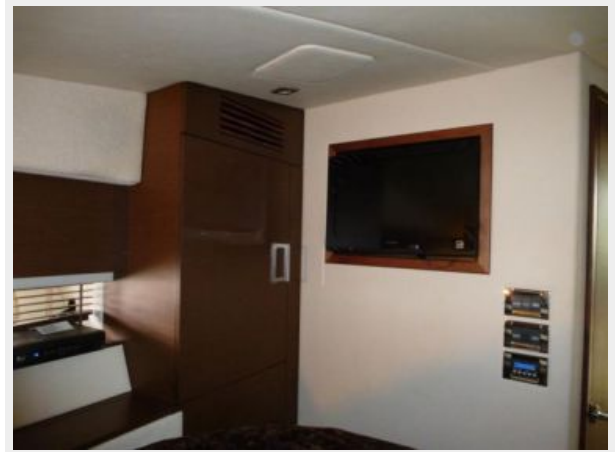












CONTACTS

Andrey Shestakov, leading yacht broker of the sales department of Shestakov Yacht Sales Inc. Shestakov Yacht Sales Inc., the official representative of the Miami/Fort Lauderdale FL headquarters.

Contact details

Email: andrey@shestakovyachtsales.com

Web: shestakovyachtsales.com/en/

Telephones

USA: +1(954)274-4435

Office hours

Monday – Saturday: **9:00 - 21:00** EDT

Sunday: **closed**

Address



Harbour Towne Marina, 850 NE 3rd St,
STE 213, Dania, FL 33004