

ESTONIA — SEA RAY



Builder: [SEA RAY](#)

Year Built: 2003

Model: Cruiser

Price: PRICE ON APPLICATION

Location: United States

LOA: 48' 0" (14.63m)

Beam: 15' 3" (4.65m)

Min Draft: 3' 9" (1.14m)

Max Draft: 3' 9" (1.14m)

Our experienced yacht broker, Andrey Shestakov, will help you choose and buy a yacht that best suits your needs **Estonia — SEA RAY** from our catalogue. Presently, at Shestakov Yacht Sales Inc., we have a wide variety of yachts available on our sale's list. We also work in close contact with all the big yacht manufacturers from all over the world.

If you would like to buy a yacht **Estonia — SEA RAY** or would like help answering any questions concerning purchasing, selling or chartering a yacht, please call **+1(954)274-4435**

TABLE OF CONTENTS

TABLE OF CONTENTS	2
SPECIFICATIONS	4
Overview	4
Basic Information	4
Dimensions	4
Speed, Capacities and Weight	4
Accommodations	4
Hull and Deck Information	5
Engine Information	5
DETAILED INFORMATION	6
Control Station	6
hull and Deck Features	6
Bridge Features	6
Helm Electronics	7
Galley	7
Cockpit Features	7
Windlass	7
Cabin Features	7
Salon	7
Master Stateroom	8
Master Head/Shower	8
VIP Stateroom	8
VIP Head/Shower	8
Third Stateroom	8
Technical	9
Water System	9
Waste System	9
Underwater Gear	9

Electrical System	9
Points of Interest	10
Exclusions	10
Disclaimer	10
PHOTOS	11
CONTACTS	23
Contact details	23
Telephones	23
Office hours	23
Address	23

SPECIFICATIONS

Overview

This extremely fine vessel is meticulously maintained by a very proud owner that even employees his own personal steward to keep her looking her best. With her powerful and reliable Cummins QSM 11 Engines, Beautiful Cherry Interior, Bridge A/C, Bow Thruster, Hydraulic Swim Platform, Garmin 7212 and much more, makes this vessel a must see. Please look at complete listing to see what all she has to offer.

Basic Information

Category: Cruiser

Sub Category: Sedan Cruiser

Model Year: 2003

Year Built: 2003

Country: United States

Vessel Top: 2363

Dimensions

LOA: 48' 0" (14.63m)

Beam: 15' 3" (4.65m)

Min Draft: 3' 9" (1.14m)

Max Draft: 3' 9" (1.14m)

MFG Length: 51' 0" (15.54m)

Speed, Capacities and Weight

Water Capacity: 140 Gallons

Holding Tank: 68 Gallons

Fuel Capacity: 500 Gallons

Accommodations

Total Cabins: 3

Sleeps: 8

Total Heads: 2

Hull and Deck Information

Hull Material: Fiberglass

Hull Configuration: Deep Vee

Hull Color: White

Hull Designer: Sea Ray

Engine Information

Engines: 2

Manufacturer: Cummins

Model: QSM 11

Engine Type: Inboard

Fuel Type: Diesel

DETAILED INFORMATION

Control Station

Alarms, Engine - Oil, Water & Transmission Oil Alarms, High-Water - Bilge & Cabin Compass
 Emergency Engine Stop Emergency Start System - Engines Horns, Air (Concealed) - Dual
 Trumpet Panel, Switch (Backlit) - High-Gloss Burl Panels, Instrument - High-Gloss Burl
 SmartCraft Diagnostics: Instrumentation, Custom Sea Ray SmartCraft 4-in-1 Multigauges (2)
 w/Low-Glare Blue Night Lighting & Chrome Bezels (Includes: Fuel Level, Oil Pressure, Voltmeter,
 Water Temperature) SmartCraft System View (Includes: Air & Water Temperature, Combined
 Fuel Flow/ Sea Ray "48 Sedan Bridge" Page 2 of 21 Range, Depth, Engine Alarms/Hour meters,
 Engine Synchronizer, GPS Interface, System Maintenance Records) Spotlight w/Dual Halogen
 Bulbs - Remote-Controlled Steering, Hydraulic Steering, Tilt Wheel Steering Wheel, Wood-Accent
 Switches, Illuminated Weatherproof Rockers & Dimmer Control Systems Monitor, Digital LCD -
 for Engine Diagnostics &

hull and Deck Features

Bottom Paint Bow Rail, 316 Stainless Steel w/Welded Stanchions, Intermediate Rails & Life
 Lines Cleats, Custom Sea Ray Thru-Bolted -Stainless Steel (10) Color Schemes (Blue, Green,
 Black/Gold) Deck Fill Plates, Stainless Steel Deck Rails, 316 Stainless Steel Foam-Filled Under
 Floor Areas Gel-Coat, Arctic White Graphics, Striping Handrails, 316 Stainless Steel Hatch, Deck
 Vent - Translucent w/Locks & Sky Screen Cover (20x20) Light, Stern Lights, Navigation
 Portlights, Stainless Steel (4 Fixed, 6 Opening) Resin, High-Performance Vinyl Ester Rub Rail,
 PVC w/Stainless Steel Insert Storage, Transom Wall - Fenders & Gear Stringer System,
 Fiberglass Hatman Swim Platform, Extended w/Concealed Stainless Steel Three-Step Swim
 Ladder w/Integral Grab Handle Thru-Hull Fittings, Color-Coordinated Toe Rail, Molded
 Fiberglass - Deck Vent System, Engine Room - Integral Windows, Deck Side w/Opening Vent
 Windows Windshield, Bridge Venturi - Aluminum-Framed

Bridge Features

Beverage Holders (6) Carpet Liner, Snap-In Control Station w/Windscreen (Located in Center
 Bridge) Handrails, 316 Stainless Steel Hardtop, Fiberglass w/(20x20) Hatch w/Sky Screen
 Cover, Stainless Steel Grab Rails & Overhead Lighting w/Electronic Dimmer Hatch, Bridge
 Access Lighting, 12V Outlet, 12V Accessory Outlet, 120V GFI Protected Refrigerator, 120V
 Seating, Helm (2) - Custom Euro-Style w/Flip-Up Thigh-Rise Bolsters, Armrests & Heavy-Duty
 Pedestals w/Slides, Swivels & Pneumatic Vertical Adjustments Seating, U-Shaped w/Storage
 Below - Forward Ship's Bell Steps, Molded Bridge Access w/Storage Below Stereo, 12V AM/FM
 Single CD w/6-Disc CD Changer, Amplifier, Subwoofer, Speakers (6) & Digital Cockpit/Bridge
 Remote Controls (Clarion Storage, Chart Drawer (Chart Tube will be in lieu of Chart Drawer if
 Bridge A/C is also ordered) Table, Bridge w/Sun Pad Filler Cushions - Bow Wet Bar w/Sink,

Faucet, Stainless Steel Handrail, Trash Receptacle & Storage Cabinet - Port Forward

Helm Electronics

Bow Thruster Depth sounder Log-Speedometer Plotter Garmin 7212 Plotter/Radar/Sonar VHF Radio Auto Pilot Compass Remote Spot light control Windlass Control Smart Craft Engine Sync

Galley

Coffeemaker, 120V (Spacemaker Countertop), Molded Fiberglass w/Granite-Colored Gel-Coat, Sink, Single-Lever Grohe®Faucet & Corian Sink Cover Flooring, Wood Lighting, Dual-Voltage - 120V/12V Microwave/Convection Oven, 120V Power Vent, 12V Refrigerator & Freezer w/Ice maker (Sub Zero) Storage, Bottle Storage, Drawers w/Cutlery Insert Storage, Upper & Lower w/Designated Plate, Glass & Bottle Storage Stove, 240V Flush-Mount Three-Burner w/Stainless Steel Safety Rail

Cockpit Features

Carpet Liner, Snap-In Door, Cabin Entry (Sliding & Lockable w/Screen) Stainless Steel Door, Transom Floor Liner, Fiberglass - Self-Bailing Handrails, 316 Stainless Steel Hatch, Engine Service - Gas-Assisted Lighting, Indirect Outlet, 120V GFI Protected Seating, Aft Bench w/Fiberglass Storage Steps, Molded Deck Access Storage, Aft Coaming w/Fiberglass Bins Storage, Side Panels

Windlass

Anchor, Stainless Steel Anchor Chute, Stainless Steel Anchor Rope/Chain Storage w/Hatch Anchor Wash down Spigot w/Hose Windlass, Rope/Chain w/Foot Switches (Lofrans Progress II)

Cabin Features

Carbon Monoxide Monitors Carpet, Deep-Pile BCF - 44-Ounce Carpet Runners, Interior (Sunbrella) Handrails, Elliptical Stainless Steel Interior Finish - Blossom Cherry Lighting, 12V Halogen Lighting, 12V Indirect Lighting, 120V Outlet, 12V Accessory Outlets, 120V GFI Protected Outlets, Phone Pillows, Accent Polished Chrome Outlet & Switch Plates Shades, Fabric Day/Night w/Drape Trim Storage, In-Floor Salon

Salon

Entertainment Center Stereo, 12V Double Din AM/FM Digital Cassette & Single CD w/6-Disc CD

Changer, Amplifier & Speakers Bose Storage, Cabinet - CD & Videotape Seating, Barrel Chairs (2) Storage, Cabinets - Starboard Table, Dining/Cocktail (Movable - Folding Leaf) - Hi-Lo stools Electric slide out bed Bose Lifestyle system Samsung 42 inch flat screen Direct TV HD Samsung Blue Ray DVD Horizon Ram Mic-Submercible

Master Stateroom

Bed, Full-Size w/Innerspring Mattress, Pillows, Sheets (2 Sets), Coordinated Spread & Drawer Storage Below w/Gas-Assisted Hatch Door, Privacy Hanging Lockers (2) - Full-Length Cedar-Lined w/Lights & Beveled Mirrored Doors Mirrored Rope Locker Bulkhead Storage, Gunwale Cabinet 32 Inch Samsung flat screen TV Direct TV HD Samsung Blue Ray DVD

Master Head/Shower

Clothes Hook Door, Privacy - Access from Master Stateroom Handrails, Stainless Steel Head w/Fiberglass Settee Lid (VacuFlush) Power Vent, 12V Shower w/Seat, Adjustable Shower Wand & Circular Acrylic Door Storage, Cabinet - Upper Storage Medicine Cabinet Countertop, Sink, Grohe Faucet & Storage Below

VIP Stateroom

Bed, Full-Size w/Innerspring Mattress, Pillows, Sheets (2 Sets), Coordinated Spread & Drawer Storage Below w/Gas-Assisted Hatch Door, Privacy Hanging Locker, Cedar-Lined w/Light & Beveled Mirrored Door Sea Ray "48 Sedan Bridge" Page 6 of 21 Mirrors, Wall Accent Skylight, Circular Storage, Drawers Samsung 32 Inch Flat Screen Direct TV HD Samsung Blue Ray DVD

VIP Head/Shower

Clothes Hook Door, Privacy - Access from Hallway Door, Privacy - Access from Port Stateroom Handrails, Stainless Steel Head w/Fiberglass Settee Lid (VacuFlush) Power Vent, 12V Shower w/Seat, Adjustable Shower Wand & Bifold Door Storage, Cabinet - Upper Storage, Medicine Cabinet - Mirrored Vanity w/Corian Countertop, Sink, Grohe Faucet

Third Stateroom

Bed, Aft Bunk w/Pillows, Sheets & Coordinated Spread Mirrors, Wall Accent Seating, Sofa w/Drawer Storage Below - Converts to Twin Bunk w/Pillows, Sheets & Coordinated Spread Skylight, Circular Storage, Upper & Lower Cabinets Washer/Dryer combo

Technical

Horns,Air (Concealed) - Dual Trumpet Panel, Switch (Backlit) - High-Gloss Burl Panels, Instrument - High-Gloss Burl SmartCraft TM Diagnostics: Instrumentation, Custom Sea Ray SmartCraft 4-in-1 Multigauges (2) w/Low-Glare Blue Night Lighting & Chrome Bezels (Includes: Fuel Level, Oil Pressure,Voltmeter, Water Temperature) SmartCraft System View (Includes: Air & Water Temperature, Combined Fuel Flow/ Range, Depth, Engine Alarms/Hourmeters, Engine Synchronizer, GPS Interface System Maintenance Records) Spotlight w/Dual Halogen Bulbs - Remote-Controlled (ACR) Steering, Hydraulic Steering,Tilt Wheel Steering Wheel,Wood-Accent Switches, Illuminated Weatherproof Rockers & Dimmer Control Systems Monitor, Digital LCD - for Engine Diagnostics & Pump Monitoring System Emergency stop system engines

Water System

Freshwater Hose & Spigot - Engine Room Freshwater Washdown Spigot Pressure Water System w/Dual 12V Pumps Shower, Cockpit - Hot & Cold Water Heater, 240V (18-Gallon) Water Inlet, Dockside Water Tank 140 Gallons **Located in Transom locker a water filtration system**

Waste System

Central Drain System Head System (VacuFlush) Holding Tank Level Indicators - MDP & Heads Holding Tank w/Dockside Pump-Out (68-Gallon) Sump Box w/Pump - Automatic

Underwater Gear

Bonding System w/Zinc Hull Plate Propeller Shafts, 2 1/2" Stainless Steel (2) - Aquamet 22 Propellers, Nibral 4-Blade Cup Rudders, Manganese-Bronze w/Stainless Steel Posts Seacocks on all Underwater Fittings Seawater Strainers Shaft Logs, Dripless w/Extra Seal Carrier Kit Struts, Manganese-Bronze Trim Tabs, Hydraulic

Electrical System

Batteries, 8-D w/Boxes (2) & Group 27 for Genset (1) Battery Charger/Converter, 120V/50 Amp/12V Battery Charger Over current Protection Isolators, Galvanic (2) Panel, Circuit Breaker - Remote Panel, DC Main Breaker Panel, Main Distribution - AC Sea Ray "48 Sedan Bridge" Page 8 of 21 Panel, Main Distribution - DC Shore Power, Cablemaster (Glendinning) 50 Amp/240V/60 Cycle w/75' Cords & Wireless Remote w/220V/50 Cycle) Transformers, Shore Power Isolation -50 Amp/120V/60 Cycle TV/Phone Inlet w/TV Antenna,TV Shore Cord & Phone Shore Cord Wiring Color Coded

Points of Interest

Spare Props 7212 Garmin Plotter/Radar/Sonar Flat Screen Televisions Blue Ray DVD Players Fusion (2) MS IP7001systems Water filtration System Aluminum boarding ladder Accessible from either side of the boat Direct TV HD Systems for each Television Center Bridge Windshield Wiper Bridge A/C

Exclusions

Owner's personal belongings.

Disclaimer

The Company offers the details of this vessel or yacht in good faith but cannot guarantee or warrant the accuracy of this information nor warrant the condition of the vessel. A buyer should instruct his representatives, agents, or his surveyors, to investigate such details as the buyer desires validated. This vessel or yacht is offered subject to prior sale, price change, or withdrawal without notice.

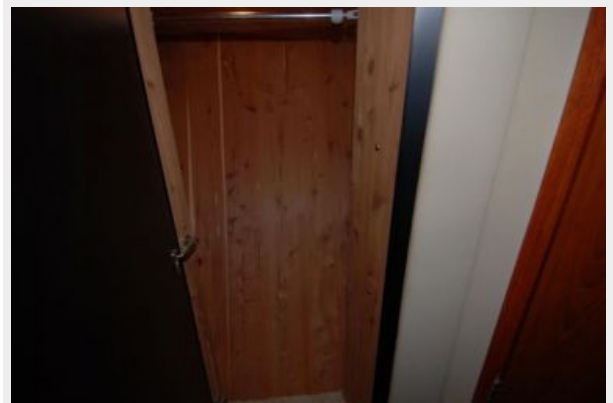
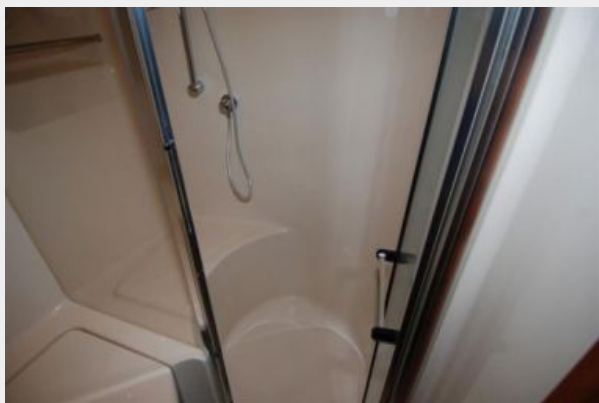
PHOTOS

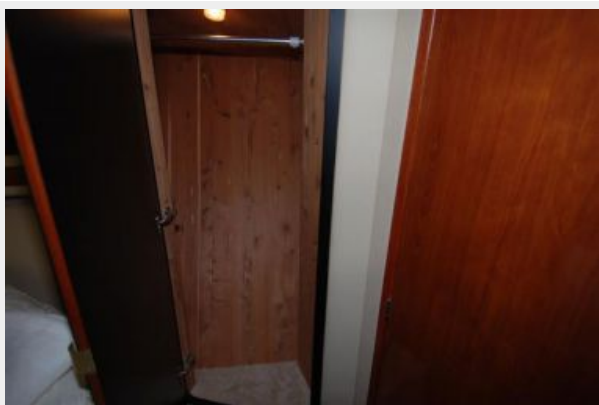










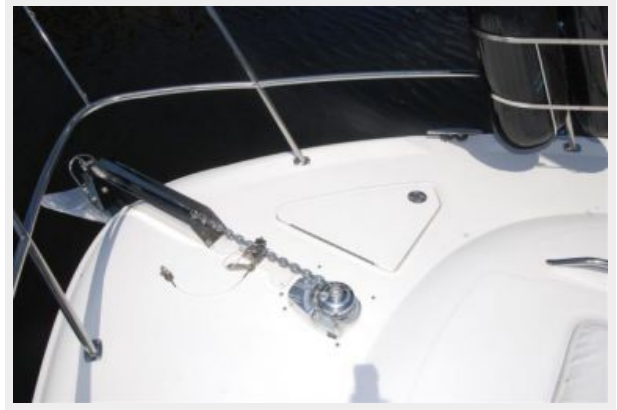














CONTACTS

Andrey Shestakov, leading yacht broker of the sales department of Shestakov Yacht Sales Inc. Shestakov Yacht Sales Inc., the official representative of the Miami/Fort Lauderdale FL headquarters.

Contact details

Email: andrey@shestakovyachtsales.com

Web: shestakovyachtsales.com/en/

Telephones

USA: +1(954)274-4435

Office hours

Monday – Saturday: **9:00 - 21:00** EDT

Sunday: **closed**

Address



Harbour Towne Marina, 850 NE 3rd St,
STE 213, Dania, FL 33004