

## WET AFFAIR — MARQUIS



**Builder:** MARQUIS

**Year Built:** 2010

**Model:** Cruiser

**Price:** PRICE ON APPLICATION

**Location:** United States

**LOA:** 50' 0" (15.24m)

**Beam:** 15' 7" (4.75m)

**Max Draft:** 3' 9" (1.14m)

**Max Speed:** 34.75904968 Kts. (40 MPH)

Our experienced yacht broker, Andrey Shestakov, will help you choose and buy a yacht that best suits your needs **WET AFFAIR — MARQUIS** from our catalogue. Presently, at Shestakov Yacht Sales Inc., we have a wide variety of yachts available on our sale's list. We also work in close contact with all the big yacht manufacturers from all over the world.

If you would like to buy a yacht **WET AFFAIR — MARQUIS** or would like help answering any questions concerning purchasing, selling or chartering a yacht, please call **+1(954)274-4435**

# TABLE OF CONTENTS

TABLE OF CONTENTS	2
SPECIFICATIONS	5
Overview	5
Basic Information	6
Dimensions	6
Speed, Capacities and Weight	6
Accommodations	6
Hull and Deck Information	6
Engine Information	7
DETAILED INFORMATION	8
Salon	8
Galley	8
Master Stateroom	9
Master Head	9
VIP Stateroom 1	10
Guest Stateroom 1	10
Guest Head	11
Electronics & Navigational Equipment	11
Electrical Equipment	11
Cockpit & Swim Platform	12
Helm	12
Deck Equipment	13
Mechanical Equipment	13
Exclusions	14
Disclaimer	14
PHOTOS	15
Profile	15
Profile	15

Starboard	15
Starboard	15
Port	16
Port	16
Port	16
Seating	16
Seating	17
Aft	17
Grill	17
Salon Couch	17
Salon Starboard	17
Sconce	18
Salon	18
Salon Aft	18
Salon	18
Salon	19
Galley	19
Galley	19
Galley	20
Galley Counter	20
Galley	20
Galley	20
Floor	21
Floor	21
Salon	21
Salon	21
Salon	22
Controls	22
Controls	22

Controls	22
Controls	23
Controls	23
Controls	23
Controls	23
Helm Seat	24
Helm	24
Helm Seat	24
Controls	24
Controls	25
Hall	26
Master	26
Master	26
Master	26
Master Bathroom	27
Master Bathroom	27
Master Bathroom	27
Guest 1	27
Guest Bath	28
Guest 2	28
Guest Bath	28
Forward	28
Swim Platform	29
Transom	29
<b>CONTACTS</b>	<b>30</b>
Contact details	30
Telephones	30
Office hours	30
Address	30

---

# SPECIFICATIONS

---

## Overview

---

The Marquis 500 Sport Coupe is a yacht created through the partnership of Italy's Nuvolari-Lenard Naval Architects and Marquis, America's foremost builder of premium quality yachts. The result is a trend setting sport coupe with styling, quality and performance that will stand out in any port throughout the world. Propulsion is provided by three Volvo Diesel engines equipped with innovative IPS drives. Performance is exhilarating. With triple Volvo IPS Series 500's, she can achieve a top speed of 35 mph. The IPS joystick makes docking and maneuvering this 50' yacht in tight quarters a snap. Nuvolari-Lenard's heritage of designing the world's most innovative mega-yachts is obvious throughout the Marquis 500 Sport Coupe's interior design and appointments. The Zebrano cabinetry, Brazilian cherry floors and designer fixtures set this yacht apart from typical express style boats. People who love being on the water will place high value on having the cockpit, salon, helm station and galley on the same level. With a push of a button you can move the transom lounge aft which expands the size of the cockpit.

Like all Marquis, this yacht is certified to CE-Class A specifications. That means it meets the European Union's highest standards and is built to be used with confidence on any body of water throughout the world.

"Wet Affair" is a stunning, upgraded, 2010 Marquis 500 SC powered with a triple Volvo 500 IPS application with only 219 Hours. This beautiful metallic stone gray hull with white hard top is a stunning combination. As described, she is heavily upgraded and in VERY good condition! This magnificent 50' yacht is owned by loyal multi Marquis yacht owner. Some of her current upgrades include, satellite television with three direct TV receivers, two engine room and one cockpit camera which display in one of the two Raymarine E-120 displays, auto pilot, VHF radio, an upgraded stereo speaker system, custom painted external electronics to blend with the black hard top, added chrome electroplated engine vents, tinted sunroof windows along with completely new and upgraded Amtico floors throughout the cabin. Some of her build options include, Cable Master shore power system, full raymarine navigation package including auto pilot, a powered sunroof, teak decking in the cockpit and swim platform, hydraulic swim platform, 70K BTU Dessert A/C package upgrade, 23KW Kohler diesel generator upgrade, Zebrano wood interior upgrade, underwater lighting, cockpit grill, electric hardtop shades, opening windows and too many more to mention. Desert A/C System (70,000 BTU) Engine Oil Change System Navigation and Electronic Package (2) E 120 Raymarine w/ Radar and Sounder Auto Pilot Exterior Aggregio Alloy Pain Carbon Fiber Powered Sun Roof Electric Powered Shade Teak Decking (4) LED Underwater Lighting (WHITE) Hydraulic Swim Platform Cockpit Table Cockpit Ice Maker Cockpit Refrigerator Cockpit Grill Premium Stereo Package with Surround Sound WaterMaker w/ LCD Monitors

---

## Basic Information

---

**Category:** Cruiser

**Sub Category:** Express

**Model Year:** 2010

**Year Built:** 2010

**Country:** United States

**Vessel Top:** Hardtop

**Cockpit:** Yes

---

## Dimensions

---

**LOA:** 50' 0" (15.24m)

**Beam:** 15' 7" (4.75m)

**Max Draft:** 3' 9" (1.14m)

**Clearance:** 16' 0" (4.88m)

---

## Speed, Capacities and Weight

---

**Max Speed:** 34.75904968 Kts. (40 MPH)

**Displacement:** 46300 Pounds

**Water Capacity:** 160 Gallons

**Holding Tank:** 90 Gallons

**Fuel Capacity:** 506 Gallons

---

## Accommodations

---

**Total Cabins:** 3

---

## Hull and Deck Information

---

**Hull Material:** Fiberglass

---

## Engine Information

---

**Engines:** 3

**Manufacturer:** Volvo

**Model:** IPS 500

**Engine Type:** Inboard

**Fuel Type:** Diesel

---

# DETAILED INFORMATION

---

## Salon

---

### 50' Marquis Sport Yacht WET AFFAIR

- Entertainment center with 32" LCD TV with lift, stereo system, DVD/CD player, Sirius satellite radio system and Apple iPod dock
- Premium stereo upgrade with surround sound-Kenwood touchscreen stereo in salon and dual JL Audio speakers with subwoofer and amplifier in cockpit
- Lounge with storage under cushions
- (2) Designer chairs
- Dark Brazilian Cherry flooring
- Duette shades on lower salon windows
- Designer decor, premium wall coverings and fabrics
- (2) Air conditioning controls
- AC/DC distribution panel cabinets
- Entrance door - hinged starboard panel and bi-fold port panel provides for maximized opening, handle lock and deadbolt
- LED overhead lights with electronic dimmer control, brushed stainless steel
- (4) Sonance stereo speakers
- Table converts to double berth with filler cushions
- 8-piece decorator pillow set
- Dinette table converts to double berth
- Central vacuum system

## Galley

---

- Liquor cabinet, glass shelves, built-in storage for liquor bottles and glassware with blue accent lighting
- 2-burner electric range with Ceran top and exhaust fan
- Drawer-style refrigerator and freezer
- Solid surface countertop
- Dark Brazilian Cherry flooring
- Overhead recessed lights
- Pantry cabinets, forward and aft bulkhead
- Trash compactor
- Tappan built-in microwave/convection oven/grill, stainless steel finish
- (5) Storage drawers, self-closing drawer slides, painted fronts with the look of stainless steel
- Stainless steel sink, undermounted with designer faucet
- Storage cabinet, painted front with the look of stainless steel



- Trash receptacle, built-in with slide out hinges

---

## Master Stateroom

---

- Island queen berth with pillowtop innerspring mattress, storage beneath with gas-assisted hinges, wood headboard and padded bolster trim coordinated with hull color
- 20" LCD TV/DVD player and stereo
- Designer decor consisting of premium wall coverings and fabrics
- (2) Electrical outlets
- Deck portlights - port & stbd. with decor matched sliding shades
- (2) Hanging lockers, full cabin height and automatic light
- Rope accent lighting above deck window curtains
- (2) Reading lights
- Overhead, lockable hatch
- Sheet set embroidered with Marquis logo
- (2) Under berth storage drawers
- Storage shelves
- Window treatments
- (4) 10" Hull portlights, fixed non-opening
- Overhead recessed halogen lights with electronic dimmer control
- Air conditioning control

---

## Master Head

---

- Spa shower, steam generator, teak bench seat and teak grate on flooring
- Electrical outlet
- Entrance door from master stateroom secures closed, integral doorstop, decor matched hardware
- Exhaust fan
- Flooring - marble
- Hull portlight (1) - round, frosted glass with screen
- Lights - halogen, overhead, recessed
- Medicine cabinet - mirrored doors
- Light
- Shower door - tempered glass, frameless, secures closed
- Rocker light switches
- Skylight
- Storage cabinet over toilet with mirrored doors
- Toilet - VacuFlush®, pedestal with run/sleep switch
- Toilet paper holder - wall-mounted
- Towel bars
- Vanity cabinet - countertop with vessel sink & drawers

- Shower stall
- Shower head - overhead Kohler®
- Shower light - halogen, overhead, recessed
- Shower seat - fiberglass
- Nonskid sole

---

## VIP Stateroom 1

---

- Berth - queen, pillow top innerspring mattress, with storage beneath & padded bolster trim coordinated with hull color
- Designer décor - consisting of premium wall coverings & fabrics
- Electrical outlets (2)
- Entrance door - from companionway; secures open & closed, decor matched hardware
- Fixed hull window
- Hanging locker - with 3 drawers underneath
- 15" LCD TV and DVD player and stereo
- Mirrored bulkhead
- Hanging locker - with mirrored doors & drawer storage
- Hull portlight (1) - round with screen
- Light - halogen, over berth head, directable for reading
- Lights - halogen, overhead, recessed
- Nightstand - with drawer storage
- Rocker light switches
- Seat with cushion
- Skylight
- Window treatments - pleated curtains, décor matched
- Carpet - advanced stain protection, fade-wear, crush-resistant, multiyear warranties, with pad

---

## Guest Stateroom 1

---

- Twin berths, pillow top innerspring mattress, padded bolster trim coordinated with hull color
- 15" LCD TV & DVD player
- Clarion stereo/CD player
- Carpet - advanced stain protection, fade-wear, crush-resistant, multiyear warranties, with pad
- Designer décor - consisting of premium wall coverings & fabrics
- Entrance door - from companionway, secures open & closed, decor matched hardware
- Fixed hull window
- Hanging locker - with 3 drawers underneath, automatic light
- Light - halogen, over berth head, directable for reading
- Lights (6) - halogen, overhead, recessed

- Nightstand - with storage
- Rocker light switches
- Skylight
- Window treatments - pleated curtains, décor matched
- Electrical outlets (2)

---

## Guest Head

---

- Exhaust fan
- Flooring - marble
- Hull portlight (1) - round, frosted glass with screen
- Lights - halogen, overhead, recessed
- Medicine cabinet - mirrored door
- Rocker light switches
- Skylight
- Storage cabinet with mirrored doors
- Toilet - VacuFlush®, pedestal with run/sleep switch
- Toilet paper holder - wall-mounted
- Towel bars
- Vanity cabinet - countertop with vessel sink & drawers
- Shower stall
- Light
- Nonskid sole
- Shower door - tempered glass, secures closed
- Shower head - overhead Kohler®
- Shower light - halogen, overhead, recessed
- Shower seat - fiberglass
- Electrical outlet
- Entrance doors - secures closed, integral doorstop, decor matched hardware

---

## Electronics & Navigational Equipment

---

- (2) Raymarine E120's multifunction units
- Radar w/4K open array
- Depth sounder
- Ray 240 VHF handset
- Transucer
- 125 WAAS GPS sensor
- DSM 300 Sonar

---

## Electrical Equipment

---

- AC/DC distribution panels with magnetic circuit breakers and integral generator and bilge blower controls; AC/DC voltmeter AC/DC ampmeter
- Dockside inlet, CATV with 50' white cord
- Kohler 23kW generator
- Battery chargers - (1) 20 amp charger for the engine batteries, (1) 60 amp charger for ship service batteries and generator
- Dual cablemaster for shorepower

## Cockpit & Swim Platform

- Boarding ladder - 3 steps, telescoping with grab rail, concealed in swim platform
- Stainless steel grabrails by side deck stairways and on top of transom
- Cockpit icemaker
- Hatch - engine room access, guttered, watertight, locking stainless steel latch, gas-assist, ladder to machinery compartment, sized to permit equipment removal
- Lights - courtesy, recessed, with exterior-mounted switch
- Lights - overhead, recessed, with exterior-mounted switch, polished chrome
- (2) Side deck stairways - integral to deck
- Teak decking on swim platform, cockpit and side deck steps
- Extending cockpit - 71 ft approx., with transom lounge in forward position; extends to 79 ft. approx. when lounge slides aft
- Wet Bar, with sink and storage below
- Grill
- Icemaker
- Refrigerator
- Swim platform, 36 ft. approx, integral to hull and deck
- Transom gate, port & starboard side, stainless steel & etched plexiglass, secures closed, stainless steel hardware
- Transom lounge, slides aft 14" to provide 8' approx. additional cockpit space at anchor or dock, accommodates 4 adults with storage beneath
- Storage lockers - swim platform area port & starboard
- Storage locker - starboard aft of salon door, under side deck step area, fiberglass door and interior closeout, contains main accessory battery switch; sized for deck chair storage
- Storage locker - starboard side
- (2) Stereo speakers with amplifier
- Hydraulic swim platform

## Helm

- Displays (1 for each diesel engine) - digital LCD, tachometer, hourmeter, engine oil pressure, engine coolant temperature, engine battery voltage, transmission fluid pressure, transmission fluid temperature, rudder angle

- Gauges - analog, fuel level
- Analog electronic clock
- Beverage holders
- Fire extinguisher alarm - automatic
- Accessory space - for installing navigation equipment
- IPS joystick controls
- Helm seat - 6-way power, bench style, high-quality marine-grade upholstery, embroidery stitching, storage underneath
- Overhead red night reading light
- Rocker switch controls
- Spotlight control
- Tilt steering wheel
- Volvo IPS Joystick control
- Windshield wipers/washers (2) port & starboard
- Windshield defoggers
- Access panel - provides access to wiring below helm
- Accessory outlets (1) - 12 volt

---

## Deck Equipment

---

- Anchor roller, over-the-stern, stainless steel channel with nylon rollers
- Stainless steel bow chafe plate
- Windshield weather covers
- Maxwell 1000 Lo-Profile windlass package
- (2) Deck portlights, port & stbd. on foredeck, tinted plexiglass
- Freshwater, hot & cold transom handshower
- Foredeck sun lounge with cushion
- Transom & bow freshwater washdowns

---

## Mechanical Equipment

---

- Tropical A/C option (70,000 BTU) with reverse cycle heat
- Freshwater cooling, engines
- Internal sea strainers
- 11 gallon water heater
- High water bilge alarm
- Automatic engine synchronization
- Racor fuel filters, engines and generator
- Engine oil change system
- Engine alarms, temperature and oil pressure
- Fire suppressions system, auto/manual with automatic engine/generator shut down
- Acoustical and thermal insulation

- Overhead lights, controls in cockpit
- Lectrotab trim tabs
- Engine room access ladder
- (4) Bilge pumps
- Bilge blowers
- Overboard discharge system with pump

---

## Exclusions

---

Owner's personal belongings.

---

## Disclaimer

---

The Company offers the details of this vessel or yacht in good faith but cannot guarantee or warrant the accuracy of this information nor warrant the condition of the vessel. A buyer should instruct his representatives, agents, or his surveyors, to investigate such details as the buyer desires validated. This vessel or yacht is offered subject to prior sale, price change, or withdrawal without notice.

# PHOTOS

**Profile**



**Profile**



**Starboard**



**Starboard**



Port



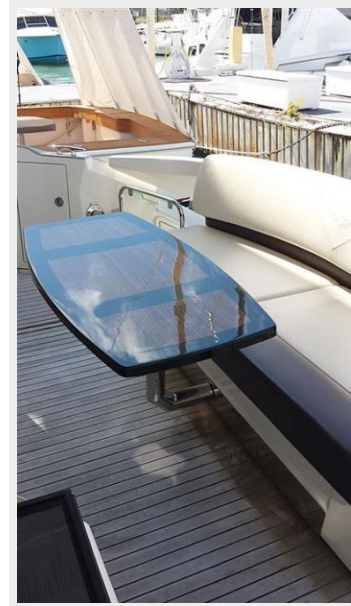
Port



Port



Seating





### Seating



### Aft



### Grill



### Salon Couch



### Salon Starboard



Sconce



Salon



Salon



Salon Aft



**Salon**



**Galley**



**Galley**





**Galley**



**Galley Counter**



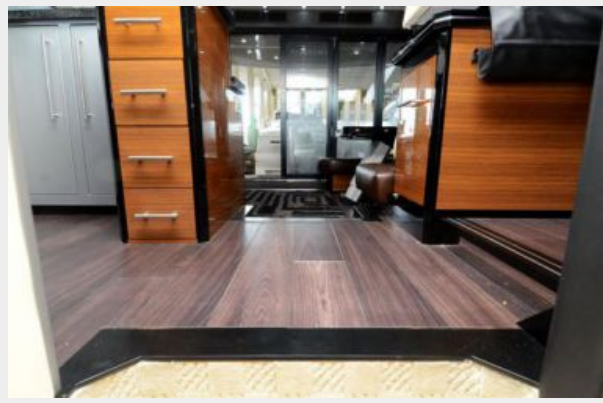
**Galley**



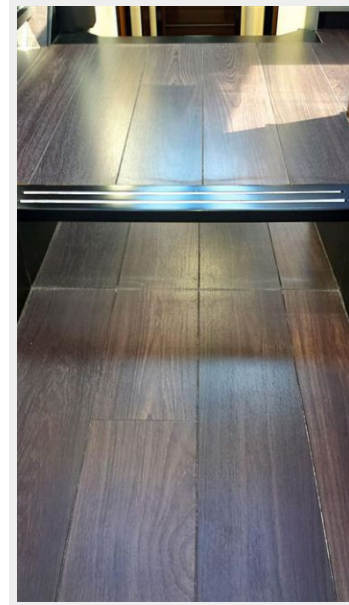
**Galley**



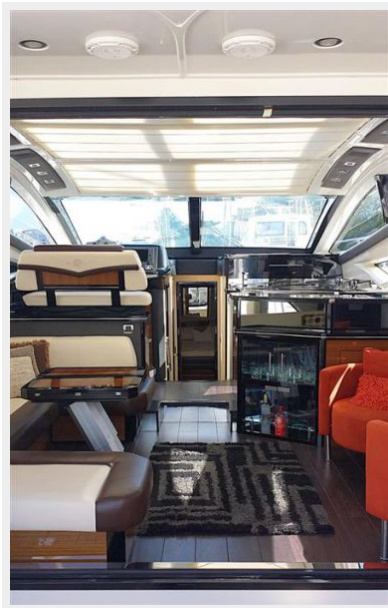
Floor



Floor



Salon



Salon



Salon



Controls



Controls



Controls





**Controls**



**Controls**



**Controls**



**Controls**



Helm



Helm Seat



Helm Seat

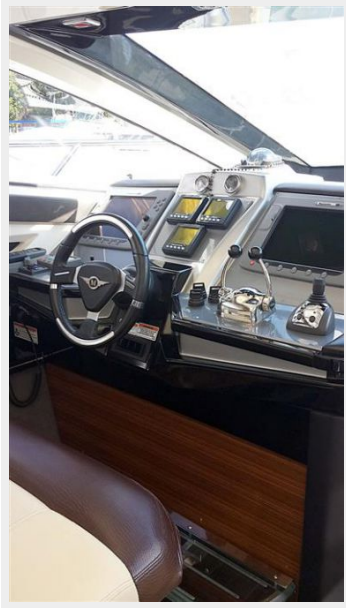


Controls





## Controls



Hall



Master



Master



Master



**Master Bathroom**



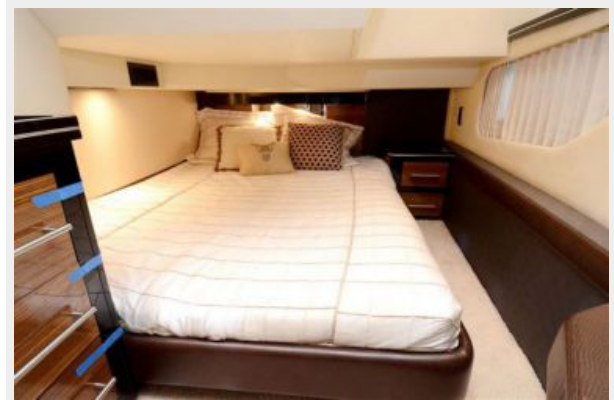
**Master Bathroom**



**Master Bathroom**



**Guest 1**





**Guest 2**



**Guest Bath**



**Guest Bath**



**Forward**



### Swim Platform



### Transom



# CONTACTS

---

Andrey Shestakov, leading yacht broker of the sales department of Shestakov Yacht Sales Inc. Shestakov Yacht Sales Inc., the official representative of the Miami/Fort Lauderdale FL headquarters.

## Contact details

---

Email: [andrey@shestakovyachtsales.com](mailto:andrey@shestakovyachtsales.com)

Web: [shestakovyachtsales.com/en/](http://shestakovyachtsales.com/en/)

## Telephones

---

USA: +1(954)274-4435

## Office hours

---

Monday – Saturday: **9:00 - 21:00** EDT

Sunday: **closed**

## Address

---



Harbour Towne Marina, 850 NE 3rd St,  
STE 213, Dania, FL 33004