

HEY JUDE — OCEAN YACHTS



Судостроитель: [Ocean Yachts](#)

Год постройки: 2000

Модель: Катер для спортивной рыбалки

Цена: **ЦЕНА ЯХТЫ ПО ЗАПРОСУ**

Местонахождение: United States

Длина общая: 56' 0" (17.07m)

Ширина: 16' 10" (5.13m)

Макс. осадка: 4' 5" (1.35m)

Купить **Hey Jude — Ocean Yachts** а также выбрать подходящую вам яхту из нашего каталога яхт вам поможет опытный яхтенный брокер Андрей Шестаков. На сегодняшний день компания **Shestakov Yacht Sales Inc.** имеет большое количество яхт в собственном списке продаж, а также тесно сотрудничает со всеми крупными яхтенными производителями по всему миру.

Для того чтобы купить яхту **Hey Jude — Ocean Yachts** а также проконсультироваться по любому вопросу связанному с покупкой, продажей, чартером яхт позвоните по телефону **+7(918)465-66-44**.

ОГЛАВЛЕНИЕ

ОГЛАВЛЕНИЕ	2
ХАРАКТЕРИСТИКИ	5
Обзор	5
Основная информация	5
Размеры	5
Скорость, вместимость и масса	5
Размещение	5
Корпус и палуба	6
Информация о двигателе	6
ПОДРОБНОЕ ОПИСАНИЕ	7
Accommodations	7
Salon	7
Galley	8
Dining	8
Master Stateroom	8
VIP Stateroom	8
VIP Head	9
Guest Stateroom & Companionway	9
Cockpit	9
Fly Bridge	10
Electronics & Navigation	10
Electrical Equipment	10
Mechanical	11
Engineer Room	11
Исключения	11
Отказ от ответственности	11
ФОТОГРАФИИ	13
Profile	13

Salon	13
Salon	13
Salon	13
Salon	13
Galley	13
Dining	14
Galley	14
Master Stateroom	14
Master Stateroom	14
Head	15
Head	15
VIP Stateroom	15
VIP Stateroom	15
Head	16
VIP Stateroom	16
Head	16
Guest Stateroom	16
Head	17
Head	17
Bridge	17
Bridge	17
Bridge	18
Bridge	18
Cockpit	18
Cockpit	18
Cockpit	18
Cockpit	18
Engine Room	19
Engine Room	19

Engine Room	19
Engine Room	19
Bow View	19
Stbd Profile	19
Port Profile	20
Port Profile	20
Aft View	20
Stbd Profile	20
КОНТАКТЫ	21
Контактная информация	21
Телефоны	21
Время работы	21
Адрес	21

ХАРАКТЕРИСТИКИ

Обзор

A great example of the 56' Ocean Super Sport! Loaded with recent upgrades, this 56 shines inside and out. Three staterooms and three heads, a huge salon with full galley and adjacent dinette, the roomiest in its class. This is a Must See!!!

TRADES CONSIDERED!

Основная информация

Тип судна: Катер для спортивной рыбалки

Подкатегория: Convertible

Модельный год: 2000

Год постройки: 2000

Страна: United States

Верх: 2363

Размеры

Длина общая: 56' 0" (17.07m)

Ширина: 16' 10" (5.13m)

Макс. осадка: 4' 5" (1.35m)

Скорость, вместимость и масса

Водоизмещение: 63000 Pounds

Вместимость воды: 220 Gallons

Вместимость сточного бака: 50 Gallons

Объем топливного бака: 900 Gallons

Размещение

Всего кают: 3

Корпус и палуба

Материал корпуса: Fiberglass

Информация о двигателе

Двигатели: 2

Производитель: MAN

Модель: D2840LE403

Тип двигателя: Inboard

Тип топлива: Diesel

ПОДРОБНОЕ ОПИСАНИЕ

Accommodations

This vessel features a 3 stateroom, 3 head, galley up floor plan. The Master stateroom is located aft with walk-around King, Plenty of storage, and en-suite head with stall shower. The VIP stateroom has a queen size berth with en-suite head and stall shower. The 3rd stateroom is to port amid-ship with 'crossover' upper and lower berths. The third head with stall shower is directly across and is also the day head. The galley is spacious and features all the modern conveniences. The huge salon is a great entertainment area with an ultra-leather "U" shaped sofa, an oversized ottoman with extra storage below, and all of the quality home entertainment features as well. There is an abundance of storage areas throughout the boat .

New in 2013

- **New EZ2CY Enclosure**
- **New Twin Garmin 7215's**
- **New Upgraded 3' Shafts**
- **New VEEM Propellers**
- **New Batteries**
- **GlassKoat Riggers and windows**
- **1,000 MAN service July, 2013**

Salon

- Huge "U" shaped settee in ivory ultra-leather with storage under & rod storage
- 3' 1/2" square ottoman with storage under
- Swing arm lamp in aft port corner
- Padded & upholstered valance boards & lambrequins with Wood blinds
- Forward port corner cabinet has a flip-up top to expose a large storage area and a decorator lamp atop
- Forward cabinetry houses a Yamaha RX V361 HD Surround Receiver
- JVC KD S 640 audio/video/control receiver, a JVC 5disc changer & a Sharp VCR
- 30" Sony Flat Panel TV
- Centerline overhead handrail
- Starboard side cabinetry houses the master electrical panel, storage drawers & cabinet,
- Phone jack
- Intercom station
- Frameless salon windows

Galley

- Corian countertops
- Large single well sink
- Scotsman Ice Machine
- 2-burner electric range recessed flush with countertop
- Fresh water tank gauge
- Kenmore undercounter dishwasher
- Double Door GE refrigerator/freezer with front water and ice dispensers
- GE compactor
- Faux marble tile flooring
- GE microwave oven
- Abundant storage cabinets and drawers

Dining

- Forward of salon, up one step, to starboard
- High gloss varnished teal table with U-shaped seating.
- Storage bins under dinette seating

Master Stateroom

- Aft Full beam master stateroom
- Centerline King bed
- 2 decorator lamps atop port & starboard end tables with storage drawer
- Indirect lighting under bedframe
- 17" Advent TV w DVD
- JVC KD S640 AM/FM CD stereo
- CruiseAir SMX control
- 2 mirror-front, cedar-lined hanging lockers
- Portside cabinetry houses 12 storage drawers
- Starboard side cedar-lined hanging lockers
- Starboard side has 2 storage cabinets & 3 storage drawers
- En-suite head
- Decorator wall coverings & decor pieces

VIP Stateroom

- Teak entry door
- Athwartships mounted double bed with storage under
- Reading lamp at headboard
- Built-end tables with 2 storage drawers in each

- Overhead storage cabinets above headboard
- 2 cedar-lined hanging lockers with teak doors to starboard
- Starboard side cabinetry houses 2 storage cabinets
- 17" Advent TV w DVD
- Decorator wall covering
- JVC KD S640 AM/FM/CD stereo with JVC speakers
- En-suite guest head in forepeak

VIP Head

- Forward VIP stateroom in the boat's forepeak
- Corian countertop with sink, & storage cabinet under 2 mirror front medicine cabinets
- Stall shower with Lexan enclosure
- Vacuflush Toilet
- Overhead hatch with screen

Guest Stateroom & Companionway

- To port, mid companion way.
- Over/under L-configuration bunks
- 2 reading lights at headboards
- Cedar-lined hanging locker
- Storage cabinet
- 3 storage drawers under lower bunk
- New 2012 Maytag washer.
- GE dryer
- Head is to starboard across from Guest stateroom
- Corian counter mirror-front medicine cabinet, vacuflush toilet, stall shower

Cockpit

- Teak covering boards
- Teak Cockpit
- Transom door and gate
- Saltwater washdown
- Freshwater washdown
- Transom livewell
- Starboard cockpit engine controls
- Engine room access via door with hinged lid
- Ladder to flybridge
- Refrigerated Fishbox
- Cockpit Freezer

- 2 fishboxes, 1 has refrigeration plates
- 6 Rodholders
- Rupp outriggers
- Center Riggers
- Murray Fighting Chair with rocket launcher
- Bait Station
- Tackle drawers

Fly Bridge

- Factory hardtop with integral overhead electronics box with hinged covers
- New 2013 EZ2CY enclosure panels
- Glendinning single lever controls
- Fireboy manual override control
- Igloo Refrigerator
- Murray Marine Ladderback Helm Chairs
- Bennett trim tab controls
- "U" shaped seating with cushions
- Rod storage cabinets under seating
- Forward centerline storage bin
- Overhead handrail
- Bilge pump indicator light
- 6 rod holders

Electronics & Navigation

- 2-Garmin 7215's - New 2013
- Northstar 6100i
- Northstar 952
- Robertson AP22 autopilot
- ICOM M604 VHF
- ICOM M504 SSB
- Electrical breaker panel
- Danforth 6" Constellation compass
- Ray Tri-Data unit (speed/depth log)
- Furuno RD-30
- Furuno T-2000 Temp
- SeaHailer
- Remote control for searchlight
- Intercom system
- Single Side Band

Electrical Equipment

- 12/24V DC systems
- 110/220V AC systems
- Circuit breaker protection throughout
- Master electrical panel in salon
- Cablemaster 220V 50 amp system
- Grounding system
- 2013 New Batteries
- 15 KW Westerbeke generator
- Sentry 40 amp 24V charger
- Sentry 60 amp 12V charger
- 12V and 24 alternator on each engine
- Electrical bonding system throughout

Mechanical

- New upgraded 3" Shafts 2013
- New VEEM Propellers 2013
- CruisAir A/C throughout with SMX digital controls
- Central vacuum system with attachments
- Strainers on A/C cooling water inlet
- 2 midships saddle fuel tanks, 1 forward fuel tank & fuel gravity fed transfer system
- Hydraulic wheel steering
- Cockpit Controls
- Glendinning electric dual lever engine control with synchronizer
- 20 gallons hot water heater
- Bilge water alarm, 3
- Auto fire extinguishing system
- 50 gallon holding tank, y-valve, overboard pump & deck fitting

Engineer Room

- Twin MAN Engine D2840LE403
- 925 Hours SMOH
- 1,000 service done in July 2013
- External seastrainers
- 110V duplex outlets
- AC & DC lighting
- Air conditioning pumps & condensers
- Battery banks in center, under panels
- Heat & sound insulation
- Dripless shaft packing glands
- Racor fuel filters with vacuum guages
- Reverso oil change pump for mains, transmissions & generator
- Air seps
- Fire boy

Исключения

При продаже яхты исключаются личные вещи владельца.

Отказ от ответственности

Компания предоставляет описание судна или яхты добросовестно, но не может гарантировать точность этой информации, а также не ручается за техническое

состояние. Покупатель должен проинструктировать своих агентов или оценщиков исследовать представленную информацию более подробно, по собственному желанию. Продажа судна или яхты, изменение цены или снятие с продажи будет происходить без предварительного уведомления.

ФОТОГРАФИИ

Profile



Salon



Salon



Salon



Salon



Galley



Galley



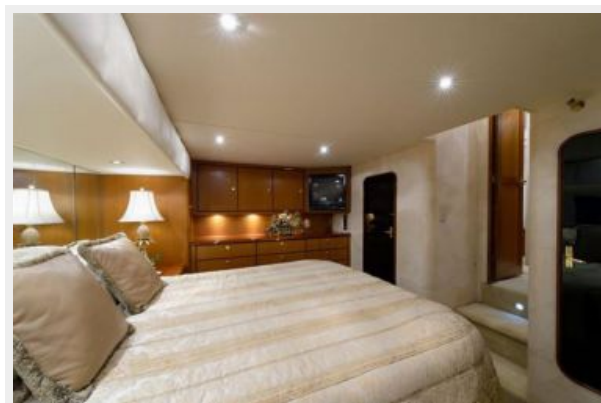
Dining



Master Stateroom



Master Stateroom



Head



Head



VIP Stateroom



VIP Stateroom



VIP Stateroom



Head



Head



Guest Stateroom



Head



Head



Bridge



Bridge



Bridge



Bridge



Cockpit



Cockpit



Cockpit



Cockpit



Engine Room



Engine Room



Engine Room



Engine Room



Stbd Profile



Bow View



Port Profile



Port Profile



Aft View



Stbd Profile



КОНТАКТЫ

Андрей Шестаков (Andrey Shestakov) – ведущий яхтенный брокер отдела продаж яхт и судов компании Shestakov Yacht Sales Inc. Официальный представитель Shestakov Yacht Sales Inc. для русскоговорящих клиентов в центральном офисе компании в Майами/Форт Лодердейл/Флорида/США.

Контактная информация

Email: andrey@shestakovyachtsales.com

Web: shestakovyachtsales.com

Телефоны

Краснодарский край: **+7(918)465-66-44**

США, Майами, Флорида: **+1(954)274-4435**

Время работы

Понедельник – Суббота: **9:00 - 21:00**
EDT

Воскресенье: **Закрето**

Адрес



Harbour Towne Marina, 850 NE 3rd St,
STE 213, Dania, FL 33004