

## WISSAHICKON — INTREPID



**Судостроитель:** INTREPID

**Год постройки:** 1979

**Модель:** Крейсерская яхта

**Цена:** **ЦЕНА ЯХТЫ ПО ЗАПРОСУ**

**Местонахождение:** United States

**Длина общая:** 35' 0" (10.67m)

**Ширина:** 10' 1" (3.07m)

**Мин. осадка:** 5' 6" (1.68m)

**Макс. осадка:** 5' 6" (1.68m)

**Крейс. скорость:** 6 Kts. (7 MPH)

Купить **WISSAHICKON — INTREPID** а также выбрать подходящую вам яхту из нашего каталога яхт вам поможет опытный яхтенный брокер Андрей Шестаков. На сегодняшний день компания **Shestakov Yacht Sales Inc.** имеет большое количество яхт в собственном списке продаж, а также тесно сотрудничает со всеми крупными яхтенными производителями по всему миру.

Для того чтобы купить яхту **WISSAHICKON — INTREPID** а также проконсультироваться по любому вопросу связанному с покупкой, продажей, чартером яхт позвоните по телефону **+7(918)465-66-44**.

# ОГЛАВЛЕНИЕ

ОГЛАВЛЕНИЕ	2
ХАРАКТЕРИСТИКИ	4
Обзор	4
Основная информация	4
Размеры	4
Скорость, вместимость и масса	4
Размещение	5
Корпус и палуба	5
Информация о двигателе	5
ПОДРОБНОЕ ОПИСАНИЕ	6
Overview	6
Remarks	7
Main Cabin	7
Forward Cabin	8
Head Compartment	8
Deck and Hull	8
Engine and Mechanical Equipment	8
Electrical System	9
Sails and Rigging	9
Exclusions	9
Исключения	9
Отказ от ответственности	9
ФОТОГРАФИИ	11
Main Salon	11
Main Salon, Dining Table Down	11
Main Salon, Port Settee	11
Main Salon, Port Settee as Berth	11
Main Salon, Stbd Settee	11

Main Salon, Stbd Settee as Berth	11
Forward Cabin	12
Forward V-Berth with Insert	12
Head	12
Access beneath V-Berth	12
Gimbaled Stove	13
Galley	13
Nav Area/Quarterberth Aft to Port	13
Nav Station	13
Roller Furler	14
Deck, View to Aft	14
Helm	14
Cockpit with Dodger	14
Cockpit, Looking Aft	15
Hydraulic Backstay	15
Engine, View from Stbd Locker	15
Westerbeke Engine Panel	15
On Mooring	16
Stern View	16
Layout	16
Hull Design Line Drawing	16
КОНТАКТЫ	17
Контактная информация	17
Телефоны	17
Время работы	17
Адрес	17

# ХАРАКТЕРИСТИКИ

## Обзор

WISSAHICKON is the most well-kept Intrepid 35' available and possibly the best anywhere to be seen. Specifically built for ease of access and repair in mind, her systems are simple and purpose-built. However, she is also a true, proven bluewater cruiser. Her designer, James McCurdy of McCurdy & Rhodes, was her first owner and sailed her as far as the Azores with his family. All three of her owners have lavished her with care – especially the current one.

## Основная информация

<b>Тип судна:</b> Крейсерская яхта	<b>Подкатегория:</b> Sloop
<b>Модельный год:</b> 1979	<b>Год постройки:</b> 1979
<b>Год обновления:</b> 2011	<b>Вид обновления:</b> Plumbing, Sails, Paint, Tanks, MaxProp
<b>Страна:</b> United States	<b>Регистрационный номер:</b> 606899
<b>Номер регистрации в береговой охране:</b> CPDS0005M79A	<b>Верх:</b> 2354

## Размеры

<b>Длина общая:</b> 35' 0" (10.67m)	<b>Длина по ватерлинии:</b> 27' 3" (8.31m)
<b>Ширина:</b> 10' 1" (3.07m)	<b>Мин. осадка:</b> 5' 6" (1.68m)
<b>Макс. осадка:</b> 5' 6" (1.68m)	

## Скорость, вместимость и масса

<b>Крейс. скорость:</b> 6 Kts. (7 MPH)	<b>Водоизмещение:</b> 15930 Pounds
<b>Вместимость воды:</b> 80 Gallons	<b>Объем топливного бака:</b> 20 Gallons

## Размещение

---

**Всего кают:** 1

**Всего коек:** 2

**Спальные места:** 5

**Всего ком. состава:** 1

## Корпус и палуба

---

**Материал корпуса:** Fiberglass

**Материал палубы:** Fiberglass

**Комплектация корпуса:** Fin & Skeg

**Цвет корпуса:** Dark Grey

**Отделка корпуса:** Plastic

**Дизайнер корпуса:** James McCurdy

## Информация о двигателе

---

**Двигатели:** 1

**Производитель:** Westerbeke

**Тип двигателя:** Inboard

**Тип топлива:** Diesel

# ПОДРОБНОЕ ОПИСАНИЕ

## Overview

WISSAHICKON is the most well-kept Intrepid 35' available and possibly the best anywhere to be seen. Specifically built for ease of access and repair in mind, her systems are simple and purpose-built. However, she is also a true, proven bluewater cruiser. Her designer, James McCurdy of McCurdy & Rhodes, was her first owner and sailed her as far as the Azores with his family. All three of her owners have lavished her with care – especially the current one.

Boat was designed with ease of access / ease of repair in mind; as such:

- Electric systems are very simple; two house batteries and a starting battery run on separate lines
- Water pumps are all manual (except bilge pump)
- New owner can easily install electric pumps
- Engine access via two locations
- Built for offshore sailing; first owner (McCurdy of McCurdy & Rhodes) designed the boat to take his family to the Azores
- Mainsail is in a stack pack; all major halyards and reefing lines lead back to cockpit, which allows for easy singlehanding
- Handrails and interior layout designed to make moving about while at sea easy
- Stove runs on LNG, which is safer than propane
- Boat cruises at (6) knots under power in calm seas
- Sails incredibly well; second owner raced WISSAHICKON on Long Island Sound
- Sail inventory includes racing main, full quiver of jibs and spinnakers

### Recent Maintenance and Additions:

In addition to regular maintenance and minor repairs:

- New head, holding tank and plumbing (2010)
- Topsides painted (2011) Awlgrip, Dark Grey
- Stripped the bottom paint (2010); filled blemishes and applied new coats
- New cruising jib (130%) (2011)
- New cruising main (2012)
- New cruising spinnaker (2010)
- New custom dodger (2010)
- Starboard fuel tank replaced (2013)
- Port fuel tank was replaced (mid-2000s)
- New MaxProp, stuffing box and shaft (2012)
- Stripped and re-applied Cetol (2012) (Teak maintained with one or two new coats of Cetol each winter)

---

## Remarks

---

Living space is a luxury you can afford on WISSAHICKON. A boat is, after all, your home for a weekend, every weekend, for your vacation and every minute that you are aboard. Your boat should have room for people, the gear they want (and need) to be comfortable and for those personal touches that mark your boat as an extension of your personality.

WISSAHICKON has the room for active sailing and active living. From cockpit to cabin sole, you'll find that the Intrepid 35 was designed and built with real, full-sized people in mind. There is standing headroom for six-footers throughout the main cabin. Five adults can sleep comfortably on deep, secure berths that are all at least 6' long. There is privacy between the main and forward cabin. The cockpit is large, with a bridge deck that makes a great cocktail table. There are numerous lockers, traps and alcoves for stowage of clothing, linens, gear, cameras and everything else you need to enjoy life aboard.

The design features a fin keel for low wetted surface and excellent upwind performance. A spade rudder is hung well aft and is protected by a skeg. This gives excellent steering response under sail or power, while the skeg contributes to steering stability. It also guards the rudder from bumps, bangs and foulings.

---

## Main Cabin

---

The main cabin area encompasses main salon, galley area, navigation station and port aft quarter berth. The main bulkhead, interior cabin sides and principle joinery are teak. Storage areas outboard of settee are faced with white Formica laminate and trimmed with teak. Where exposed, interior hull sides are sheathed using ash battens. Cabin overhead is white FRP liner. Lighting is by overhead dome lights, (6) in the main salon, nav station and galley. Ventilation is provided by a dorade vent located in the passageway leading to the forward cabin, (4) opening ports and Bowmar opening hatch in overhead.

The main salon has settee seating/berthing port and starboard. Port settee slides out to create a double berth. Poly water tanks are located under the settees. A fold-down table/book case of white Formica laminate with teak trim is mounted to the port forward bulkhead.

The galley is aft of the main salon to starboard of the companionway. Galley equipment includes: stove with oven, large icebox located under the galley counter and manually-supplied fresh water to stainless steel sink basin. Generous storage is provided outboard of the galley counter in cabinets.

The navigation station/quarter berth is located aft of the main cabin to port of the companionway. Navigation station is sit-down and forward-facing. Seating for the nav desk is at the forward end of the quarter berth. The quarter berth extends aft under the starboard cockpit seat locker, providing sleeping space for one.

---

## Forward Cabin

---

Access to lower chain/rode locker thru forwardmost bulkhead. Sleeping accommodations for two in a V-berth configuration. Filler board and cushion convert berthing space to a double berth. Storage space under V-berth in (2) drawers and (2) bins. Additional storage in cabinet aft of starboard berth consists of (2) drawers and a locker. Reading lights port and starboard. Ventilation through opening ports and Bowmar opening hatch. Interior cabin sides and principle joinery are teak. Cabin overhead is white FRP liner. Storage cabinet is white Formica laminate with teak trim. Floors are teak and holly.

---

## Head Compartment

---

Head area is aft of forward cabin portside of centerline. The area to starboard of centerline is a passageway between the forward and main cabins with a large hanging locker furthest outboard to starboard. Head features a stainless steel sink basin supplied with fresh water by means of foot pump. Cabinetry and counter for sink basin is white Formica laminate with teak trim. Teak towel rack. Manually operated head, ventilation supplied by opening port and dorade vent. 12 volt lighting.

---

## Deck and Hull

---

Deck, cockpit and cabin exterior surfaces are of Gelcoat on both smooth and non-skid areas. Exterior teak features include toe rails, cockpit coamings (optional), hand/grab rails, cabin eyebrow, dorade boxes and companionway trim. A shallow anchor well at the bow is covered by a teak hatch. There are (3) storage/sail lockers located in the cockpit. Starboard and aft lockers are deep lockers with ample storage capacity. The port locker is shallow for storage of winch handles etc. Stainless steel bow rail, stern rail and lifeline stanchions. Coated wire lifelines with openings at stern rail, both port and starboard. Stainless steel stemhead fitting, backstay tang and chainplates. Bowmar opening hatches in main and forward cabin overheads. (8) opening ports.

The hull is fabricated using conventional fiberglass (shingle-skin E glass mat/roving) construction. Ballast is externally mounted to a fin keel. The rudder is skeg mounted. Hull to deck joint is an inward turning hull flange bedded and bolted to the deck, capped by a thru-bolted teak toe rail.

---

## Engine and Mechanical Equipment

---

- Raw-water-cooled Westerbeke diesel engine (replaced new around 2000)
- New MaxProp, stuffing box and shaft (2012)
- Bronze shaft and shaft strut
- Aluminum fuel tank (20 gallons, approx.)



- Controls for throttle and transmission located at helm
- Edson steering system with pedestal and binnacle guard
- Manual fresh water supply with foot pumps at galley and head sink basins
- (2) Poly fresh water tanks located under port and starboard main cabin settees (80 gallons, approx.)
- Manually-operated head plumbed to holding tank. Waste systems plumbed for deck and/or overboard discharge

---

## Electrical System

---

- 12-volt ship's system with main selector switch and DC panel
- AC shore power system
- Main AC supply panel/switch
- AC and DC outlets
- (2) Battery banks (house and engine)

---

## Sails and Rigging

---

Rigging:

- Single-spreader masthead sloop rig with aluminum mast and boom

Sails:

- New cruising main (2012)
- Main is in a stack pack; halyards lead back to cockpit along with reefing lines, allowing easy singlehanded sailing
- New cruising jib (130%) (2011)
- New cruising spinnaker (2010)

---

## Exclusions

---

The owner's personal effects are excluded from the sale.

---

## Исключения

---

При продаже яхты исключаются личные вещи владельца.

---

## Отказ от ответственности

---

Компания предоставляет описание судна или яхты добросовестно, но не может

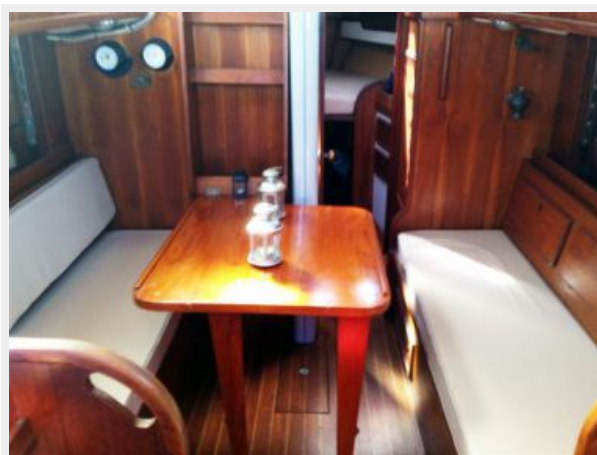
гарантировать точность этой информации, а также не ручается за техническое состояние. Покупатель должен проинструктировать своих агентов или оценщиков исследовать представленную информацию более подробно, по собственному желанию. Продажа судна или яхты, изменение цены или снятие с продажи будет происходить без предварительного уведомления.

# ФОТОГРАФИИ

**Main Salon**



**Main Salon, Dining Table Down**



**Main Salon, Port Settee**



**Main Salon, Port Settee as Berth**



**Main Salon, Stbd Settee**



**Main Salon, Stbd Settee as Berth**



**Forward Cabin**



**Forward V-Berth with Insert**



**Access beneath V-Berth**



**Head**



**Galley**



**Gimbaled Stove**



**Nav Area/Quarterberth Aft to Port**



**Nav Station**



**Roller Furler**



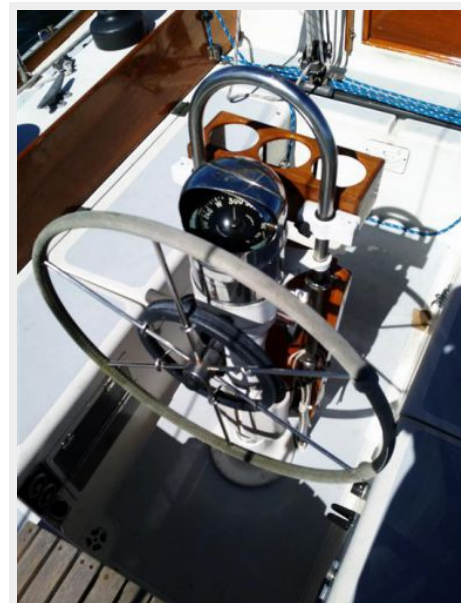
**Deck, View to Aft**



**Cockpit with Dodger**



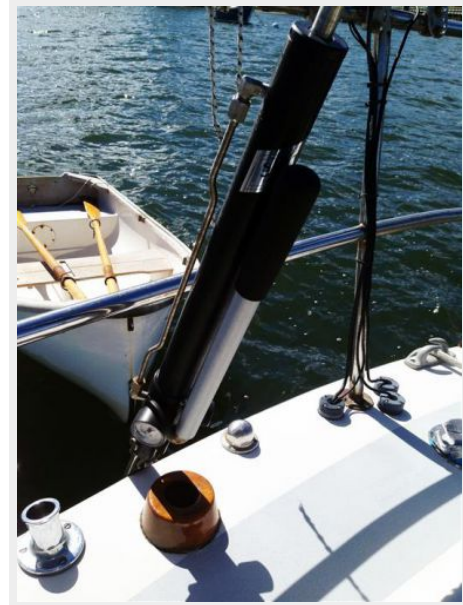
**Helm**



**Cockpit, Looking Aft**



**Hydraulic Backstay**



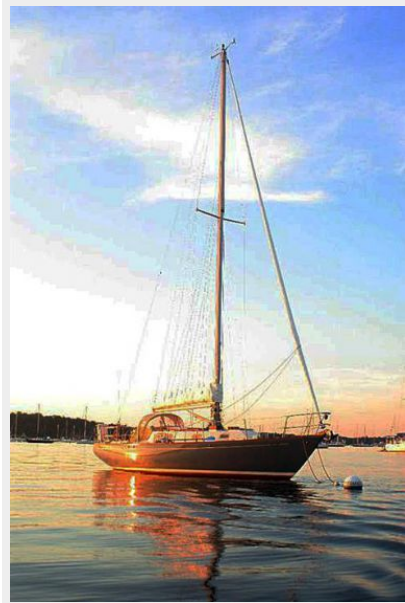
**Engine, View from Stbd Locker**



**Westerbeke Engine Panel**



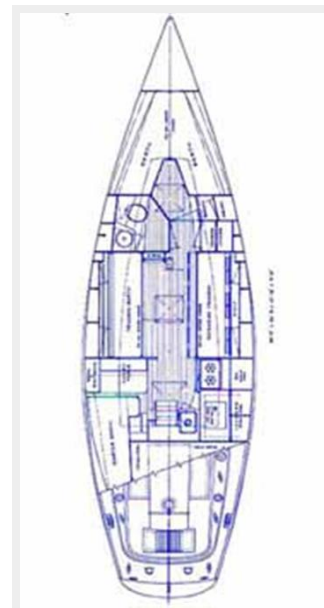
**On Mooring**



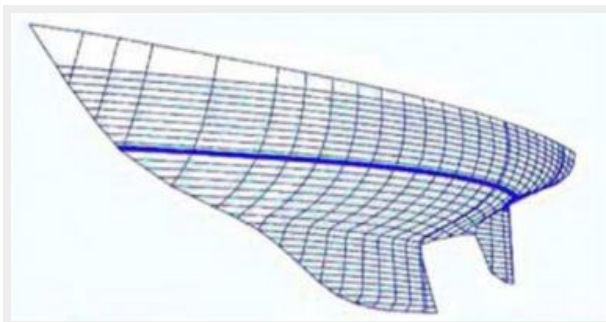
**Stern View**



**Layout**



**Hull Design Line Drawing**





# КОНТАКТЫ

---

Андрей Шестаков (Andrey Shestakov) – ведущий яхтенный брокер отдела продаж яхт и судов компании Shestakov Yacht Sales Inc. Официальный представитель Shestakov Yacht Sales Inc. для русскоговорящих клиентов в центральном офисе компании в Майами/Форт Лодердейл/Флорида/США.

## Контактная информация

---

Email: [andrey@shestakovyachtsales.com](mailto:andrey@shestakovyachtsales.com)

Web: [shestakovyachtsales.com](http://shestakovyachtsales.com)

## Телефоны

---

Краснодарский край: **+7(918)465-66-44**

США, Майами, Флорида: **+1(954)274-4435**

## Время работы

---

Понедельник – Суббота: **9:00 - 21:00**  
EDT

Воскресенье: **Закрето**

## Адрес

---



Harbour Towne Marina, 850 NE 3rd St,  
STE 213, Dania, FL 33004