

## MYMIE III — CARVER



**Builder:** CARVER

**Year Built:** 2006

**Model:** Cruiser

**Price:** PRICE ON APPLICATION

**Location:** United States

**LOA:** 36' 0" (10.97m)

**Beam:** 12' 9" (3.89m)

**Max Draft:** 3' 1" (0.94m)

Our experienced yacht broker, Andrey Shestakov, will help you choose and buy a yacht that best suits your needs **Mymie III — CARVER** from our catalogue. Presently, at Shestakov Yacht Sales Inc., we have a wide variety of yachts available on our sale's list. We also work in close contact with all the big yacht manufacturers from all over the world.

If you would like to buy a yacht **Mymie III — CARVER** or would like help answering any questions concerning purchasing, selling or chartering a yacht, please call **+1(954)274-4435**

# TABLE OF CONTENTS

---

TABLE OF CONTENTS	2
SPECIFICATIONS	5
Overview	5
Basic Information	5
Dimensions	5
Speed, Capacities and Weight	5
Accommodations	5
Hull and Deck Information	6
Engine Information	6
DETAILED INFORMATION	7
Vessel Walkthrough	7
Salon	7
Galley	7
Master Stateroom	8
Master Head	8
Helm	9
Flybridge	9
Electronics	9
Electrical System	9
Mechanical Equipment	10
Engine Room	10
Cockpit	10
Foredeck	11
Hull	11
Exclusions	11
Exclusions	11
Disclaimer	11
PHOTOS	12

Profile	12
Salon Couch	12
Storage and Sleeper	12
Storage	12
Salon TV	12
Stereo and DVD	12
6 Disc CD	13
Distribution Panel	13
Galley	13
Microwave/Coffee Maker	13
Refrigerator/Freezer	13
Galley Pullout	13
Closet	14
Galley Pullout	14
Dinette	14
Dinette	14
Master Stateroom	15
Master Stateroom	15
Head Vanity	15
Master Stateroom TV	15
Separate Shower Stall	16
Helm Area	16
Helm	16
Helm Cover	16
Electronics	16
Raymarine E120	16
Bridge Wetbar and Refrigerator	17
Port Bridge	17
Starboard Bridge	17

Aft Bridge Seating	17
Privacy Screen	17
Forward Isinglass	17
Wide Walk-around	18
Bimini and Aft Curtains	18
Bimini and Enclosures	18
Radar	18
Forward Seating	18
Forward Seating	18
Storage behind Bow Seat	19
Windlass and Anchor	19
Engine Room	19
Port Engine	19
STBD Engine	19
Batteries	19
Central Vacuum	20
2nd Engine Access	20
Steps to Bridge	20
2nd Engine Access	20
Aft Cockpit	20
Transom	20
CONTACTS	21
Contact details	21
Telephones	21
Office hours	21
Address	21

---

# SPECIFICATIONS

---

## Overview

---

2006 360 Carver Mariner, Twin Crusader, 375 HP Freshwater Cooled Engines, Only 186 Hours!

Beautiful Condition; Original Owner; Center Line Berth; Large Head with Separate Shower Stall; Nice Electronics.

This is a MUST SEE VESSEL!

## Basic Information

---

**Category:** Cruiser

**Sub Category:** Sport Cruiser

**Model Year:** 2006

**Year Built:** 2006

**Country:** United States

## Dimensions

---

**LOA:** 36' 0" (10.97m)

**Beam:** 12' 9" (3.89m)

**Max Draft:** 3' 1" (0.94m)

**Clearance:** 14' 2" (4.32m)

## Speed, Capacities and Weight

---

**Displacement:** 19500 Pounds

**Water Capacity:** 75 Gallons

**Holding Tank:** 31 Gallons

**Fuel Capacity:** 250 Gallons

## Accommodations

---

**Total Cabins:** 1

**Total Berths:** 3

**Total Heads:** 1

---

## Hull and Deck Information

---

**Hull Material:** Fiberglass

## Engine Information

---

**Engines:** 2

**Manufacturer:** Crusader

**Model:** 6.0L

**Engine Type:** Inboard

**Fuel Type:** Gas/Petrol

---

# DETAILED INFORMATION

---

## Vessel Walkthrough

---

The 360 Mariner is an improved and updated version of Carvers famous 350 Mariner. This unique vessel features port and starboard molded stairs from the cockpit to the bridge. Everyone loves the space; all one loves the bridge with her wide walk around and seating for 10-12 adults. The bridge is protected by a full Bimini Top with four sided enclosures. The double bench seat on the bow converts to a nice sun lounge with cushions. There is a huge storage compartment behind the bow seat. The bridge has bucket seats for the captain and mate. There are port and starboard bench seats with storage beneath. The wet bar and refrigerator make for easy entertaining. Walking into the salon from the cockpit, you are greeted with a spacious, one level living area. To port is a convertible, L-shaped couch and to starboard is the dedicated, booth style dinette that also converts to a single berth. Large windows and the sliding patio door provide lots of natural light and have privacy curtains. A well laid out galley is positioned to starboard and features a full size refrigerator with separate freezer, solid surface countertops and abundant storage.

The Master Stateroom is located forward and features a privacy door, center line berth and private entry to the head. The large head features a separate shower stall, vanity and VacuFlush toilet. There is an entry from the salon companionway as well as the master stateroom. The 360 Mariner is powered by Twin Crusader 375 HP freshwater cooled engines. Mymie III has low hours and is in turn key condition. Call today for more information and to make an appointment to see her.

## Salon

---

- Clarion AM/FM/CD stereo, Sirius ready
- 20" flat screen TV w/ DVD
- Dedicated Marine Air Conditioner Reverse Cycle
- Real cherrywood cabinetry
- Booth style dinette converts to berth
- Large side windows w/curtains
- Ultraleather upholstery
- L-Shaped sofa converts to double berth
- Very open and spacious salon
- Central vacuum system
- Additional access to engine room below step
- 6 disc CD changer

## Galley

---

- Full size refrigerator w/ separate freezer
- Solid surface countertops
- Large deepwell stainless steel sinks
- Hot and cold pressure water
- Coffee maker
- Microwave
- (2) Two burner electric flush top stove
- Pull out pantry storage - 2 -
- Abundant storage cabinets, above and below
- Real cherrywood cabinetry
- (3) Drawers
- 110 Volt GFCI outlet
- Hardwood flooring

---

## Master Stateroom

---

- Centerline Queen size berth
- Privacy door
- Two large drawers below berth
- Designer bed spread with matching pillow shams
- Upper cabinet storage- port and starboard
- Flip down flat screen TV
- Portlights w/ curtains, port and starboard
- Privacy entry to head
- Reading lights
- Huge storage area below berth
- Real cherrywood cabinetry
- (2) hanging lockers
- Lockers with shelves
- Dedicated reverse cycle Marine A/C

---

## Master Head

---

- Vanity w/ Sink
- Upper medicine cabinet w/ mirror doors
- Separate shower stall
- Vent fan
- Air conditioned
- 110 Volt GFCI outlet
- Entry from salon companionway and master stateroom
- Towel/linen cabinet in shower compartment
- VacuFlush toilet



---

## Helm

---

- Tilt steering
- Remote stereo control
- Spotlight control
- Trim tab controls
- Dual binnacle controls
- 12 Volt receptacles
- Custom high back bucket seats for captain and mate
- Glove box
- Helm cover
- Rudder indicator
- Synchronized gauge

---

## Flybridge

---

- Captains bucket seat- Custom ordered
- Companion bucket seat - custom ordered
- Bench seat w/ storage below, port and starboard
- Large forward facing aft bench seat w/ cover
- Refrigerator
- Wet bar w/ sink
- Removable bridge carpet
- Bimini top w/ 4 sided enclosures
- (2) Stereo speakers
- (14) Cup Holders
- Molded in stairs to cockpit, port and starboard
- Mesh privacy curtains all around

---

## Electronics

---

- Raymarine E120 color GPS chart plotter/radar
- Raymarine ST60 digital depth
- Raymarine 215 VHF radio
- Sea Key system
- Compass
- Raymarine Radar- 2 kw - 24 mi
- Raymarine ST6001 Autopilot

---

## Electrical System

---

- 120 Volt AC System
- 12 Volt DC System
- Dual 30 amp shore power circuits
- Show power cords - 2 -
- 7.3 kw Kohler generator - 155 hrs -
- (3) Batteries
- Distribution panel
- Battery charger
- Bonding system

---

## Mechanical Equipment

---

- (2) Marine air conditioners, reverse cycle
- (3) Bilge pumps w/ float switches

---

## Engine Room

---

- Twin 375 HP Crusader engines
- Freshwater cooled engines
- Dripless shaft seals
- (3) Sea strainers
- Bilge pumps w/ auto float switches
- Automatic fire extinguisher system
- Easy access from cockpit
- 2nd Access from salon

---

## Cockpit

---

- Removable cockpit carpet
- Transom door
- Integrated swim platform
- Swim ladder
- Hot and cold transom shower
- (2) Storage Compartments
- Molded-in stairs to bridge, port and starboard
- Bolster pads
- Stainless steel handrails
- Fender storage
- Courtesy lights

---

## Foredeck

---

- Wide walk around, port and starbaord
- High bow rail for safety
- Built-in bow seat w/ back rest
- Bow seat converts to sun lounge w/ cushions
- Huge storage behind bow seat
- Windlass w/ anchor, line, chain, an foot controls
- Spotlight, remote control
- Stainless steel bow rail
- Cup holders

---

## Hull

---

Trim tabs

---

## Exclusions

---

Personal Items

---

## Exclusions

---

Owner's personal belongings.

---

## Disclaimer

---

The Company offers the details of this vessel or yacht in good faith but cannot guarantee or warrant the accuracy of this information nor warrant the condition of the vessel. A buyer should instruct his representatives, agents, or his surveyors, to investigate such details as the buyer desires validated. This vessel or yacht is offered subject to prior sale, price change, or withdrawal without notice.

# PHOTOS

**Profile**



**Salon Couch**



**Storage and Sleeper**



**Storage**



**Salon TV**



**Stereo and DVD**



**6 Disc CD**



**Distribution Panel**



**Galley**



**Microwave/Coffee Maker**



**Refrigerator/Freezer**



**Galley Pullout**



**Galley Pullout**



**Closet**



**Dinette**



**Dinette**



**Master Stateroom**



**Master Stateroom**



**Master Stateroom TV**



**Head Vanity**



### Separate Shower Stall



### Helm Area



### Helm



### Helm Cover



### Electronics



### Raymarine E120





**Bridge Wetbar and Refrigerator**



**Port Bridge**



**Starboard Bridge**



**Aft Bridge Seating**



**Privacy Screen**



**Forward Isinglass**



**Bimini and Aft Curtains**



**Wide Walk-around**



**Bimini and Enclosures**



**Radar**



**Forward Seating**



**Forward Seating**



**Storage behind Bow Seat**



**Windlass and Anchor**



**Engine Room**



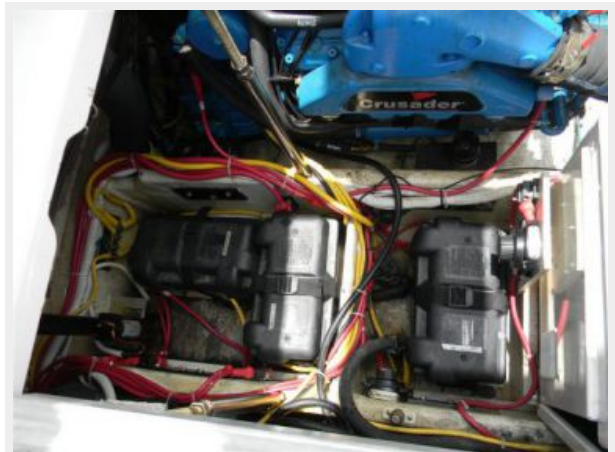
**Port Engine**



**STBD Engine**



**Batteries**



**Central Vacuum**



**2nd Engine Access**



**2nd Engine Access**



**Steps to Bridge**



**Aft Cockpit**



**Transom**



# CONTACTS

---

Andrey Shestakov, leading yacht broker of the sales department of Shestakov Yacht Sales Inc. Shestakov Yacht Sales Inc., the official representative of the Miami/Fort Lauderdale FL headquarters.

## Contact details

---

Email: [andrey@shestakovyachtsales.com](mailto:andrey@shestakovyachtsales.com)

Web: [shestakovyachtsales.com/en/](http://shestakovyachtsales.com/en/)

## Telephones

---

USA: +1(954)274-4435

## Office hours

---

Monday – Saturday: **9:00 - 21:00** EDT

Sunday: **closed**

## Address

---



Harbour Towne Marina, 850 NE 3rd St,  
STE 213, Dania, FL 33004