

MYMIE III — CARVER



Судостроитель: CARVER

Год постройки: 2006

Модель: Крейсер

Цена: **ЦЕНА ЯХТЫ ПО ЗАПРОСУ**

Местонахождение: United States

Длина общая: 36' 0" (10.97m)

Ширина: 12' 9" (3.89m)

Макс. осадка: 3' 1" (0.94m)

Купить **Mymie III — CARVER** а также выбрать подходящую вам яхту из нашего каталога яхт вам поможет опытный яхтенный брокер Андрей Шестаков. На сегодняшний день компания **Shestakov Yacht Sales Inc.** имеет большое количество яхт в собственном списке продаж, а также тесно сотрудничает со всеми крупными яхтенными производителями по всему миру.

Для того чтобы купить яхту **Mymie III — CARVER** а также проконсультироваться по любому вопросу связанному с покупкой, продажей, чартером яхт позвоните по телефону **+7(918)465-66-44**.

ОГЛАВЛЕНИЕ

ОГЛАВЛЕНИЕ	2
ХАРАКТЕРИСТИКИ	5
Обзор	5
Основная информация	5
Размеры	5
Скорость, вместимость и масса	5
Размещение	5
Корпус и палуба	6
Информация о двигателе	6
ПОДРОБНОЕ ОПИСАНИЕ	7
Vessel Walkthrough	7
Salon	7
Galley	7
Master Stateroom	8
Master Head	8
Helm	9
Flybridge	9
Electronics	9
Electrical System	9
Mechanical Equipment	10
Engine Room	10
Cockpit	10
Foredeck	11
Hull	11
Exclusions	11
Исключения	11
Отказ от ответственности	11
ФОТОГРАФИИ	12

Profile	12
Salon Couch	12
Storage and Sleeper	12
Storage	12
Salon TV	12
Stereo and DVD	12
6 Disc CD	13
Distribution Panel	13
Galley	13
Microwave/Coffee Maker	13
Refrigerator/Freezer	13
Galley Pullout	13
Closet	14
Galley Pullout	14
Dinette	14
Dinette	14
Master Stateroom	15
Master Stateroom	15
Head Vanity	15
Master Stateroom TV	15
Separate Shower Stall	16
Helm Area	16
Helm	16
Helm Cover	16
Electronics	16
Raymarine E120	16
Bridge Wetbar and Refrigerator	17
Port Bridge	17
Starboard Bridge	17

Aft Bridge Seating	17
Privacy Screen	17
Forward Isinglass	17
Wide Walk-around	18
Bimini and Aft Curtains	18
Bimini and Enclosures	18
Radar	18
Forward Seating	18
Forward Seating	18
Storage behind Bow Seat	19
Windlass and Anchor	19
Engine Room	19
Port Engine	19
STBD Engine	19
Batteries	19
Central Vacuum	20
2nd Engine Access	20
Steps to Bridge	20
2nd Engine Access	20
Aft Cockpit	20
Transom	20
КОНТАКТЫ	21
Контактная информация	21
Телефоны	21
Время работы	21
Адрес	21

ХАРАКТЕРИСТИКИ

Обзор

2006 360 Carver Mariner, Twin Crusader, 375 HP Freshwater Cooled Engines, Only 186 Hours!

Beautiful Condition; Original Owner; Center Line Berth; Large Head with Separate Shower Stall; Nice Electronics.

This is a MUST SEE VESSEL!

Основная информация

Тип судна: Крейсер

Подкатегория: Sport Cruiser

Модельный год: 2006

Год постройки: 2006

Страна: United States

Размеры

Длина общая: 36' 0" (10.97m)

Ширина: 12' 9" (3.89m)

Макс. осадка: 3' 1" (0.94m)

Трапы: 14' 2" (4.32m)

Скорость, вместимость и масса

Водоизмещение: 19500 Pounds

Вместимость воды: 75 Gallons

Вместимость сточного бака: 31 Gallons

Объем топливного бака: 250 Gallons

Размещение

Всего кают: 1

Всего коек: 3

Всего ком. состава: 1

Корпус и палуба

Материал корпуса: Fiberglass

Информация о двигателе

Двигатели: 2

Производитель: Crusader

Модель: 6.0L

Тип двигателя: Inboard

Тип топлива: Gas/Petrol

ПОДРОБНОЕ ОПИСАНИЕ

Vessel Walkthrough

The 360 Mariner is an improved and updated version of Carvers famous 350 Mariner. This unique vessel features port and starboard molded stairs from the cockpit to the bridge. Everyone loves the space; all one loves the bridge with her wide walk around and seating for 10-12 adults. The bridge is protected by a full Bimini Top with four sided enclosures. The double bench seat on the bow converts to a nice sun lounge with cushions. There is a huge storage compartment behind the bow seat. The bridge has bucket seats for the captain and mate. There are port and starboard bench seats with storage beneath. The wet bar and refrigerator make for easy entertaining. Walking into the salon from the cockpit, you are greeted with a spacious, one level living area. To port is a convertible, L-shaped couch and to starboard is the dedicated, booth style dinette that also converts to a single berth. Large windows and the sliding patio door provide lots of natural light and have privacy curtains. A well laid out galley is positioned to starboard and features a full size refrigerator with separate freezer, solid surface countertops and abundant storage.

The Master Stateroom is located forward and features a privacy door, center line berth and private entry to the head. The large head features a separate shower stall, vanity and VacuFlush toilet. There is an entry from the salon companionway as well as the master stateroom. The 360 Mariner is powered by Twin Crusader 375 HP freshwater cooled engines. Mymie III has low hours and is in turn key condition. Call today for more information and to make an appointment to see her.

Salon

- Clarion AM/FM/CD stereo, Sirius ready
- 20" flat screen TV w/ DVD
- Dedicated Marine Air Conditioner Reverse Cycle
- Real cherrywood cabinetry
- Booth style dinette converts to berth
- Large side windows w/curtains
- Ultraleather upholstery
- L-Shaped sofa converts to double berth
- Very open and spacious salon
- Central vacuum system
- Additional access to engine room below step
- 6 disc CD changer

Galley

- Full size refrigerator w/ separate freezer
- Solid surface countertops
- Large deepwell stainless steel sinks
- Hot and cold pressure water
- Coffee maker
- Microwave
- (2) Two burner electric flush top stove
- Pull out pantry storage - 2 -
- Abundant storage cabinets, above and below
- Real cherrywood cabinetry
- (3) Drawers
- 110 Volt GFCI outlet
- Hardwood flooring

Master Stateroom

- Centerline Queen size berth
- Privacy door
- Two large drawers below berth
- Designer bed spread with matching pillow shams
- Upper cabinet storage- port and starboard
- Flip down flat screen TV
- Portlights w/ curtains, port and starboard
- Privacy entry to head
- Reading lights
- Huge storage area below berth
- Real cherrywood cabinetry
- (2) hanging lockers
- Lockers with shelves
- Dedicated reverse cycle Marine A/C

Master Head

- Vanity w/ Sink
- Upper medicine cabinet w/ mirror doors
- Separate shower stall
- Vent fan
- Air conditioned
- 110 Volt GFCI outlet
- Entry from salon companionway and master stateroom
- Towel/linen cabinet in shower compartment
- VacuFlush toilet

Helm

- Tilt steering
- Remote stereo control
- Spotlight control
- Trim tab controls
- Dual binnacle controls
- 12 Volt receptacles
- Custom high back bucket seats for captain and mate
- Glove box
- Helm cover
- Rudder indicator
- Synchronized gauge

Flybridge

- Captains bucket seat- Custom ordered
- Companion bucket seat - custom ordered
- Bench seat w/ storage below, port and starboard
- Large forward facing aft bench seat w/ cover
- Refrigerator
- Wet bar w/ sink
- Removable bridge carpet
- Bimini top w/ 4 sided enclosures
- (2) Stereo speakers
- (14) Cup Holders
- Molded in stairs to cockpit, port and starboard
- Mesh privacy curtains all around

Electronics

- Raymarine E120 color GPS chart plotter/radar
- Raymarine ST60 digital depth
- Raymarine 215 VHF radio
- Sea Key system
- Compass
- Raymarine Radar- 2 kw - 24 mi
- Raymarine ST6001 Autopilot

Electrical System

- 120 Volt AC System
- 12 Volt DC System
- Dual 30 amp shore power circuits
- Show power cords - 2 -
- 7.3 kw Kohler generator - 155 hrs -
- (3) Batteries
- Distribution panel
- Battery charger
- Bonding system

Mechanical Equipment

- (2) Marine air conditioners, reverse cycle
- (3) Bilge pumps w/ float switches

Engine Room

- Twin 375 HP Crusader engines
- Freshwater cooled engines
- Dripless shaft seals
- (3) Sea strainers
- Bilge pumps w/ auto float switches
- Automatic fire extinguisher system
- Easy access from cockpit
- 2nd Access from salon

Cockpit

- Removable cockpit carpet
- Transom door
- Integrated swim platform
- Swim ladder
- Hot and cold transom shower
- (2) Storage Compartments
- Molded-in stairs to bridge, port and starboard
- Bolster pads
- Stainless steel handrails
- Fender storage
- Courtesy lights

Foredeck

- Wide walk around, port and starboard
- High bow rail for safety
- Built-in bow seat w/ back rest
- Bow seat converts to sun lounge w/ cushions
- Huge storage behind bow seat
- Windlass w/ anchor, line, chain, and foot controls
- Spotlight, remote control
- Stainless steel bow rail
- Cup holders

Hull

Trim tabs

Exclusions

Personal Items

Исключения

При продаже яхты исключаются личные вещи владельца.

Отказ от ответственности

Компания предоставляет описание судна или яхты добросовестно, но не может гарантировать точность этой информации, а также не ручается за техническое состояние. Покупатель должен проинструктировать своих агентов или оценщиков исследовать представленную информацию более подробно, по собственному желанию. Продажа судна или яхты, изменение цены или снятие с продажи будет происходить без предварительного уведомления.

ФОТОГРАФИИ

Profile



Salon Couch



Storage and Sleeper



Storage



Salon TV



Stereo and DVD



6 Disc CD



Distribution Panel



Galley



Microwave/Coffee Maker



Refrigerator/Freezer



Galley Pullout



Galley Pullout



Closet



Dinette



Dinette



Master Stateroom



Master Stateroom



Master Stateroom TV



Head Vanity



Separate Shower Stall



Helm Area



Helm



Helm Cover



Electronics



Raymarine E120



Bridge Wetbar and Refrigerator



Port Bridge



Starboard Bridge



Aft Bridge Seating



Privacy Screen



Forward Isinglass



Bimini and Aft Curtains



Wide Walk-around



Bimini and Enclosures



Radar



Forward Seating



Forward Seating



Storage behind Bow Seat



Windlass and Anchor



Engine Room



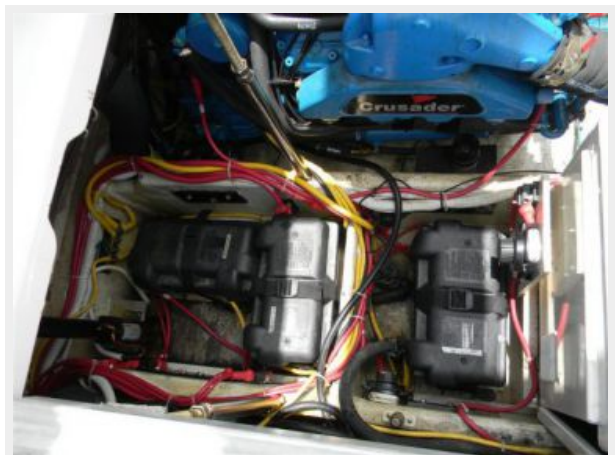
Port Engine



STBD Engine



Batteries



Central Vacuum



2nd Engine Access



2nd Engine Access



Steps to Bridge



Aft Cockpit



Transom



КОНТАКТЫ

Андрей Шестаков (Andrey Shestakov) – ведущий яхтенный брокер отдела продаж яхт и судов компании Shestakov Yacht Sales Inc. Официальный представитель Shestakov Yacht Sales Inc. для русскоговорящих клиентов в центральном офисе компании в Майами/Форт Лодердейл/Флорида/США.

Контактная информация

Email: **andrey@shestakovyachtsales.com**

Web: shestakovyachtsales.com

Телефоны

Краснодарский край: **+7(918)465-66-44**

США, Майами, Флорида: **+1(954)274-4435**

Время работы

Понедельник – Суббота: **9:00 - 21:00**
EDT

Воскресенье: **Закрето**

Адрес



Harbour Towne Marina, 850 NE 3rd St,
STE 213, Dania, FL 33004