

SILVERTIP — YACHTING DEVELOPMENTS, NZ



Судостроитель:

YACHTING DEVELOPMENTS, NZ

Год постройки: 2001

Модель: Sloop

Цена: ЦЕНА ЯХТЫ ПО ЗАПРОСУ

Местонахождение: New Zealand

Длина общая: 110' 11" (33.80m)

Ширина: 23' 4" (7.10m)

Макс. осадка: 14' 2" (4.30m)

Крейс. скорость: 10 Kts. (12 MPH)

Макс. скорость: 12 Kts. (14 MPH)

Купить **SILVERTIP — YACHTING DEVELOPMENTS, NZ** а также выбрать подходящую вам яхту из нашего каталога яхт вам поможет опытный яхтенный брокер Андрей Шестаков. На сегодняшний день компания **Shestakov Yacht Sales Inc.** имеет большое количество яхт в собственном списке продаж, а также тесно сотрудничает со всеми крупными яхтенными производителями по всему миру. Для того чтобы купить яхту **SILVERTIP — YACHTING DEVELOPMENTS, NZ** а также проконсультироваться по любому вопросу связанному с покупкой, продажей, чартером яхт позвоните по телефону **+7(918)465-66-44**.

ОГЛАВЛЕНИЕ

ОГЛАВЛЕНИЕ	2
ХАРАКТЕРИСТИКИ	4
Обзор	4
Основная информация	4
Размеры	4
Скорость, вместимость и масса	4
Размещение	5
Корпус и палуба	5
Информация о двигателе	5
ПОДРОБНОЕ ОПИСАНИЕ	6
Walkthrough	6
Communications and navigational equipment	6
Mechanical, propulsion and engine room equipment	6
Capacities	7
Electrical	7
Pneumatics	7
Plant services	7
Galley, laundry and domestic equipment	7
Entertainment	7
Tender and toys	8
Sails and rigging	8
Deck and safety equipment	8
Fire system	8
Boarding systems	8
Furling gear and deck winches	8
Paint	8
Refit works 2012	9
Исключения	9

Отказ от ответственности	9
ФОТОГРАФИИ	10
КОНТАКТЫ	13
Контактная информация	13
Телефоны	13
Время работы	13
Адрес	13

ХАРАКТЕРИСТИКИ

Обзор

Launched in June 2001, Silvertip is a truly high performance sloop, designed by Dubois and built by Yachting Developments in Auckland. She was the first yacht to ever win both the International Superyacht Society's Best Sailing Yacht and Showboats' Best Sailing Yacht awards in her class. She also won the NZ millennium cup 2012, although she was one of the smallest yachts in the fleet, Silvertip was clearly the quickest in the light airs.

Основная информация

Тип судна: Sloop	Подкатегория: Представительская парусная яхта
Модельный год: 2001	Год постройки: 2001
Год обновления: 2012	Страна: New Zealand

Размеры

Длина общая: 110' 11" (33.80m)	Ширина: 23' 4" (7.10m)
Макс. осадка: 14' 2" (4.30m)	Длина привального бруса: 110' 11" (33.80m)

Скорость, вместимость и масса

Крейс. скорость: 10 Kts. (12 MPH)	Макс. скорость: 12 Kts. (14 MPH)
Дальность на макс. скорости: 4500 Kts.	Водоизмещение: 182983.67746 Pounds
Чистый вес: 114 Pounds	Вместимость воды: 1188.774234 Gallons
Объем топливного бака: 2403.9656732 Gallons	

Размещение

Всего кают: 3

Всего коек: 7

Койки экипажа: 4

Корпус и палуба

Материал корпуса: Composite

Дизайнер экстерьера: Dubois Naval
Architect

Дизайнер интерьера: Agnes Comar

Информация о двигателе

Двигатели: 1

Производитель: Luggier

Модель: 6180

ПОДРОБНОЕ ОПИСАНИЕ

Walkthrough

Launched in June 2001, Silvertip is a truly high performance sloop, designed by Dubois and built by Yachting Developments in Auckland. She was the first yacht to ever win both the International Superyacht Society's Best Sailing Yacht and Showboats' Best Sailing Yacht awards in her class. She also won the NZ millennium cup 2012, although she was one of the smallest yachts in the fleet, Silvertip was clearly the quickest in the light airs.

Silvertip has three luxurious and comfortable cabins aft for a maximum number of 6 guests. There is a beautiful Owner's cabin, along with one double cabin as well as one twin cabin.

Silvertip accomodates a crew of 4 professionals. Among the special features of this splendid sloop are the imported Swedish pear wood that lines the magnificent interior, a new AV system, new C6 rigging and sails. Her comfortable and spacious cockpit is protected by a generous, folding but semi-permanent sprayhood. This yacht has been in the same ownership from conception, and has been maintained with pride and dedication. She represents uniqueness, and extremely good value for money, when compared to other sailing yachts that are available today.

Communications and navigational equipment

1 x Furuno Black Box radar, multi colour and ARPA FR-2105 2 x Nav PCs Vesari running Maxsea Time 0 3D Nobletec Admiral V10 B&G Hydra 3000 System B&G Electronic Gyro Class B AIS 1 x Furuno Active Antenna GPS 1 x Garmin GPS 128 Thrane and Thrane FBB 500 2 x Furuno 2721 VHF handsets 1 x ICOM ICM304 VHF 2 x ICOM ICM72 Handhelds 1 x Furuno FS 1503 SSB radio 1 x Motorola Iridium 1 x Ericson W35 3G modem – Router 1 x NTC 40WV 43 modem – Router 2 x Apple airport extreme WI FI KX TDS PABX phone system 1 x Peplink switcher

Mechanical, propulsion and engine room equipment

1 x Luger 6180 300HP @ 2300 RPM. 7400 hrs @June 2014 Twin disc Reverse gearbox with Aquadrive coupling driving Hundersted electric VP drive 4 blade prop Kobelt remote throttle system American Bow thruster/ YD custom retractable bow thruster 100 HP Edson helm units driving Vectran cable steering to quadrant B&G H3000 Autopilot Fuel filtration and lube oil system Onboard systems hydraulics pressure compensating package including 1 x Main Engine line drive PTO, clutched generator PTO, 2 x DC sailing pumps, 2 x soft starters, 1 x FUJI PLC Bilge System with 240 VAC, 24V, Engine driven pumps on central manifold which also combines Fire Fighting equipment Refrigeration: 1 x Split system bar-cool room marine refrigeration 1 x Deep freeze – marine system 1 x DC Fridge pump

Capacities

Fuel: 9100 litres – 2401 US gallons in 6 tanks Water: 4500 litres – 1187 US gallons in 2 tanks
 Water maker: HEM 25 series 5000 litres/day Black tank: 900 litres Grey tank: 900 litres Oil
 storage: Clean oil 120 litres, dirty oil 120 litres Displacement: 82.7 tons Ballast: 29.5 tons Fresh
 Water: 1 x 230v fresh water pump , 1 x 24v fresh water pump 1 x 230v UV steriliser, 2 x 200 litre
 hot water cylinders, 1 x 24v circulation pump

Electrical

Northern Lights Generators: 2 x 26kw with approximately 12,000 and 16,000 hours as of June
 2014 1 x Service Battery 1260 A/HR AGM, 1 x Nav 420 A/HR AGM 4 x Mastervolt 100AMP
 chargers 1 x Mastervolt Inverter 1 x 24v 175 AMP Alternator Shore Power: Vectec/ABB 180-520V
 AC 50/60 HZ 30KW Toilets: 5 x Sealand Vacuflush IMED Custom automated split bus auto plc
 controlled load shared system

Pneumatics

1 x 3HP Rotary Hydrovane 2kw 50 litre reservoir, auto drain 1 x AIRHATCH Control PLC 1 x
 Bauer Jr Dive Compressor

Plant services

Air Conditioning: Cruisair 2 stage Reverse Cycle Compressors with 11 handlers

Galley, laundry and domestic equipment

3 x Miele combiset gas hobs, 1 x gimbaled 1 x Miele extractor 1 x Meile pyrolitic oven 1 x
 Gaggenau microwave 1 x Delonghi Nespresso coffee machine 1 x Miele Pro G7859 Dishwasher
 1 x Miele Pro PW6065 Washing machine 1 x Miele Pro PT7135C Dryer 1 x Kenmore Trash
 compactor 1 x Electrolux Pro Store 400 lt freezer 1 x Electrolux Pro Store 400 lt Fridge 1 x Built -
 in Cool room 2 x U Line Icemakers 1 x Custom underfloor freezer

Entertainment

Multi Kaleidescape player/hard drive storage system with Crestron control Multi input system with
 music docks, external HDMI docks, Apple TV, Bluray DVD, 46"LED Sony TV on lifter in saloon
 32" Samsung LED wall mounted in Crew mess 32" Sony HD LCD TVs wall mounted in guest
 cabins, on lifter in Owners' cabin RTI and Crestron Control Nav Station Internal PC in Owners'
 cabin Nav station internal PC in Crew Mess

Tender and toys

1 x Aquapro 4.5m inflatable tender, Yamaha 60HP 4 stroke outboard 1 x 3m Achilles foldable inflatable tender, Yamaha 8 HP outboard

Sails and rigging

North Sails 3DI Main – 572m² 6156 sq ft full batten square top North Sails 3DI Blade jib with inflatable battens Cuban Fibre high bias Code zero on Future Fibres cable Southern Spars EC6 Carbon standing rigging 3DL Delivery Main 3DL delivery blade North UK AZ gennaker North NZ spectra staysail Southern Spars 4 spreader carbon spar and Park Avenue boom Harken 4.5 Hydraulic furler

Deck and safety equipment

1 x Manson s/s CQR with 150m 14mm galvanized chain 1 x Fortress collapsible with 20m chain and 50m warp 1 x Simpson Lawrence windlass 2 x Red Sea Sava 8 man cat 1 liferafts 2 x Jon Buoy MOB modules 2 x 406 EPIRB Kannad 1 x SAART arc 2 x Grab bags 2 x Flare kits 8 x Survival suits 11 x Mustang lifejackets 6 x Kannad PLBs – AIS locators

Fire system

1 x FM200 fixed suppression system 1 x Fire blanket 1 x Fire axe 12 x CO₂, foam, dry powder extinguishers 2 x Rescue hoods Paradox heat and smoke detection system

Boarding systems

1 x Stern boarding via swim platform 1 x Hydraulic carbon custom passarelle

Furling gear and deck winches

Harken hydraulic stand up winches x 7 Harken manual top handle winches x 2 Harken pedestals x 2 Harken Jib furler x 1 In deck Caraboni code zero furler x 1 Caraboni Magic trim traveler x 2 Onboard composite captive winches x 2 Victor tail trim rams x 3 Navtec boom vang x 1 Navtec Outhaul x 2 Custom flush overlaid Imed helm panels with touch screen navigation and sail handling.

Paint

Dupont Metallic Silver (Hull) and White (Superstructure, mast and boom) New 2008 Boot stripe -

Awlcraft 200, new 2014 Antifoul – International Micron 77, new May 2014, scraped to primer 2012

Refit works 2012

Refit Works 2012. Mast and boom : removed and overhauled. Rigging : replaced with EC6. Sails : replaced with Doyle 3Di Exterior canvas : all covers, awnings and cushion covers replaced. Teak decks : overhauled. Hydraulic upgrade : new sail handling system for new Code O. Engine Room : various upgrades including : new 3 phase rotary compressor, AC overhaul, watermaker overhaul, new diesel filters. Helm stations : new helms, new panels and screens. Electronics : new B&G + display repeaters, new Autopilot, New Max Sea chart software and screens, new PCs. Lazarette : new carbon trim steps and lights. Entertainment : new Kaleidescape, new LED TVs, Apple TV, Crestron. Galley : new dishwasher, oven and freezer. Interior : new carpets and soft furnishings in saloon, new mattresses. Bow thruster : overhauled. Centre board : removed and serviced. Rudder : bearings replaced. Tender : overhauled. NB. Shaft and propeller : serviced 2014.

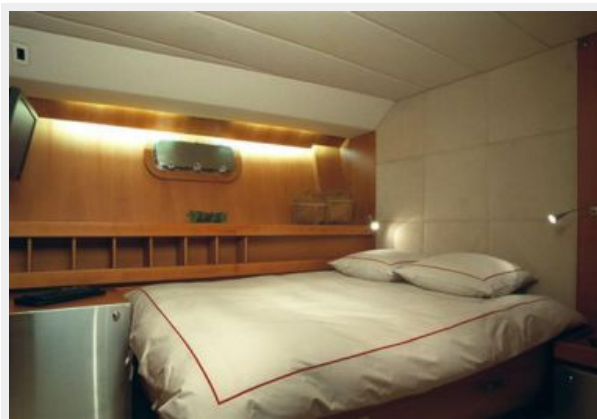
Исключения

При продаже яхты исключаются личные вещи владельца.

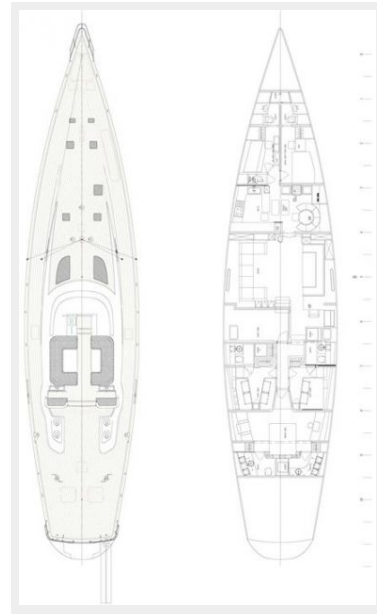
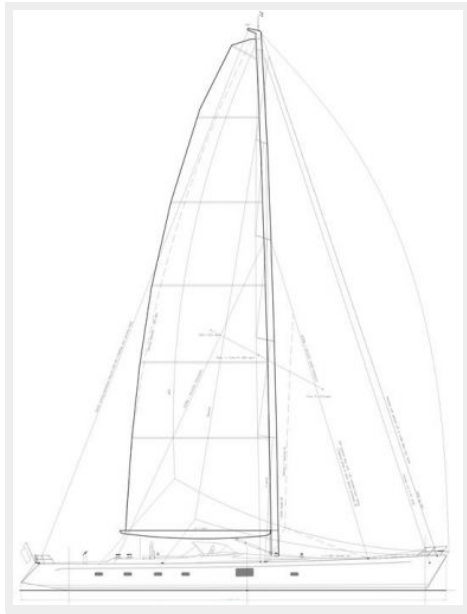
Отказ от ответственности

Компания предоставляет описание судна или яхты добросовестно, но не может гарантировать точность этой информации, а также не ручается за техническое состояние. Покупатель должен проинструктировать своих агентов или оценщиков исследовать представленную информацию более подробно, по собственному желанию. Продажа судна или яхты, изменение цены или снятие с продажи будет происходить без предварительного уведомления.

ФОТОГРАФИИ







КОНТАКТЫ

Андрей Шестаков (Andrey Shestakov) – ведущий яхтенный брокер отдела продаж яхт и судов компании Shestakov Yacht Sales Inc. Официальный представитель Shestakov Yacht Sales Inc. для русскоговорящих клиентов в центральном офисе компании в Майами/Форт Лодердейл/Флорида/США.

Контактная информация

Email: andrey@shestakovyachtsales.com

Web: shestakovyachtsales.com

Телефоны

Краснодарский край: **+7(918)465-66-44**

США, Майами, Флорида: **+1(954)274-4435**

Время работы

Понедельник – Суббота: **9:00 - 21:00**
EDT

Воскресенье: **Закрето**

Адрес



Harbour Towne Marina, 850 NE 3rd St,
STE 213, Dania, FL 33004