

ADAGIO — KANTER



Судостроитель: KANTER

Год постройки: 1984

Модель: Моторный парусник

Цена: ЦЕНА ЯХТЫ ПО ЗАПРОСУ

Местонахождение: United States

Длина общая: 50' 0" (15.24m)

Ширина: 13' 8" (4.17m)

Мин. осадка: 7' 0" (2.13m)

Купить **Adagio — KANTER** а также выбрать подходящую вам яхту из нашего каталога яхт вам поможет опытный яхтенный брокер Андрей Шестаков. На сегодняшний день компания **Shestakov Yacht Sales Inc.** имеет большое количество яхт в собственном списке продаж, а также тесно сотрудничает со всеми крупными яхтенными производителями по всему миру.

Для того чтобы купить яхту **Adagio — KANTER** а также проконсультироваться по любому вопросу связанному с покупкой, продажей, чартером яхт позвоните по телефону **+7(918)465-66-44**.

ОГЛАВЛЕНИЕ

ОГЛАВЛЕНИЕ	2
ХАРАКТЕРИСТИКИ	5
Обзор	5
Основная информация	5
Размеры	5
Скорость, вместимость и масса	5
Размещение	5
Корпус и палуба	6
Информация о двигателе	6
ПОДРОБНОЕ ОПИСАНИЕ	7
Accommodations	7
Galley and Dinette	7
Sails & Rigging	8
Deck Equipment	8
Ground Tackle	9
Safety Equipment	9
Navigation Equipment and Electronics	9
Mechanical Equipment and Details	10
Electrical Equipment	10
Исключения	11
Отказ от ответственности	11
ФОТОГРАФИИ	12
At the dock	12
Hardtop and Pilothouse	12
Hardtop	12
Pilothouse	12
Lower helm	12
Helm	12

Companionway entry	13
Pilothouse settee	13
Dinette to stbd	13
view 2	13
SS sink	13
Galley	13
Refrigeration	14
Master aft cabin	14
Double forward berth	14
view 2-	14
Head with shower	14
view 2--	14
Engine access under floor boards	15
head	15
Recently serviced engine	15
Racor filters	15
Mast and rigging	15
Watermaker	15
In mast furling	16
Solar panels	16
Wind generator, radar	16
Heavy ground tackle	16
Double SS rails all around	17
Windlass	17
Jacklines in SS mounted case	17
Dingy on davits	17
Hauled out	17
BBQ grill	17
Protected prop	18

Port view	18
Fresh bottom paint	18
stern view	18
КОНТАКТЫ	19
Контактная информация	19
Телефоны	19
Время работы	19
Адрес	19

ХАРАКТЕРИСТИКИ

Обзор

"Adagio" is a proven ocean going vessel having circumnavigated once already. She comes complete with worldwide charts! Self sufficient for long term cruising with solar, wind, generator, large tank capacity, watermaker, weather forecast and nav electronics and more. Cutter rigged center cockpit cruiser with pilothouse helm and hard dodger and hardtop bimini with full enclosure. Ease of handling with in-mast roller furling main with electric winch control, roller furling jib and staysail and electric windlass to aid with heavy ground tackle.

Safety features include steel hull, double solid SS rails, flush decks, safety bars at mast, deck mounted liferaft (needs re-cert), good handholds and walkarounds.

Enjoy your own "Personal Floating Island" generous interior living area provide a great liveaboard vessel that is comfortable underway or your favorite anchorage.

Основная информация

Тип судна: Моторный парусник

Подкатегория: Моторный парусник

Модельный год: 1984

Год постройки: 1984

Страна: United States

Верх: 2363

Размеры

Длина общая: 50' 0" (15.24m)

Ширина: 13' 8" (4.17m)

Мин. осадка: 7' 0" (2.13m)

Скорость, вместимость и масса

Вместимость воды: 200 Gallons

Объем топливного бака: 450 Gallons

Размещение

Всего кают: 3

Всего ком. состава: 2

Корпус и палуба

Материал корпуса: Steel

Информация о двигателе

Двигатели: 1

Производитель: Perkins

Модель: Sabre 4 Cylinder

Тип топлива: Diesel

ПОДРОБНОЕ ОПИСАНИЕ

Accommodations

Pilothouse salon offers excellent visibility with wrap around windows. Helm station to starboard with extended nav desk along side with 2 swivel chairs and room. Opposite you find a raised U shaped settee. Generous storage through out the vessel. Complete mechanical and engine access is under the floorboards. Step down to double sided galley to port and dinette seating to starboard. The guest quarters is a queen pullman to port followed by a guest head and V berth forward that currently serves as a storage and provisioning area. The master stateroom is located aft past the passageway from the pilothouse level. This features a queen berth, small settee, generous lockers and drawers and ensuite head w/separate shower stall.

- Queen master berth with innerspring mattress
- Groco electric head w/ macerator and holding tank
- Stainless steel lined shower aft
- Queen guest berth
- Wilcox & Crittenden manual head forward
- V berth now serves as storage
- Air Conditioner - 12000 BTU FCF
- 9 stainless steel opening ports
- Large Boston ship's clock and barometer
- Fluorescent galley lights, LED lighting throughout
- Headroom 6'3"

Galley and Dinette

Extremely workable double-sided galley. Excellent counter space and provisioning room. Great refrigerator and freezer capacity. Comfortable dining area.

- Centerline SS sink and countertop drain
- General Ecology filtered drinking water in addition to fully filtered water system.
- Hot and cold pressure water
- 6 gal Hot water heater and tank, engine and electric driven
- Pressure seawater tap
- Broadwater SS 4 burner stove with broiler and oven
- 2 propane tanks - 20lb each
- Solenoid propane shut-off
- Full size GE microwave
- Nautic-Kold 12 volt SS Refrigeration/Freezer, fresh water cooled, well insulated
- Bench style doubled sided dinette opposite galley w/full wall bookshelf

Sails & Rigging

- Cutter rigged
- Deck stepped mast with double spreader
- Hood in-mast main sail electric roller furling with manual override, cockpit controls
- Mack Sails main (1995)
- Mack Sails roller furling staysail (1995)
- Mack Sails 130% Genoa (1995)
- Spare staysail, genoa & main
- Genoa and Staysail are Profurl units
- Mast mounted downwind/ spinnaker pole
- Lines lead thru Lewmar rope clutches
- 2nd Pole on rail chocks
- Wire rigging
- Insulated backstay for SSB
- (2) Lewmar 55 two-speed self-tailing primary winches
- (2) Lewmar 46 two-speed self-tailing secondary winches
- (1) Lewmar 40 two-speed self-tailing mainsheet winch
- (1) Lewmar 30 Electric two-speed self-tailing headsail furling winch with foot switches in cockpit
- (2) Lewmar two-speed self-tailing halyard winches on mast.

Deck Equipment

Many nice safety features including solid SS top rails, SS safety bars at the mast and a fiberglass hardtop with full enclosure for a protected cockpit.

- Substantial bulwarks with solid 1 1/2" steel cap rail
- Heavy SS top railings, pulpit and pushpit
- SS dinghy davits integral to pushpit
- rubberized non-skid deck
- Pilothouse windows to New Zealand Cat. 1 Offshore standard
- Hard dodger with opening windshield, full standing headroom, doubles as a very effective rain catcher.
- Teak cockpit grate
- Large deck box aft of cockpit
- 2 large dorade ventilators
- SS safety bars at mast
- Outboard storage bracket on mast pulpit
- 10 ft Achilles hard bottom dinghy
- 20 hp Tohausu 4 stroke outboard motor
- SS swim/boarding ladder
- wind scoop

- docklines and fenders

Ground Tackle

- Lighthouse 150 capstan windlass w/horizontal shaft
- 88# Delta anchor w/150 ft chain
- Plow anchor w/300' 1/2" chain
- Double bronze bow rollers on a stainless steel anchor sprit
- 300 ft double braid nylon rope in aft deck locker
- FX-37 Fortress anchor on deck
- FX-23 Fortress anchor mounted in a custom bracket on the pushpit
- Large, lined foredeck chain locker
- Automatic chain wash-down system

Safety Equipment

- 406 EPIRB with GPS
- Givens 6 person life raft, deck mounted in canister (needs re-cert)
- (2) Rail mounted SS encased Safety harness jacklines
- Jordan Series Drogue
- Lifesling
- 4 personal flotation devices

Navigation Equipment and Electronics

Comprehensive electronics package including full communications and weather.

- B&G digital instruments- Wind speed & apparent wind, knot/log, depth, GPS, located at the pilothouse steering station and navigation area. Repeaters for all 4 instruments located in the cockpit
- 2 autopilots- TMQ AP55 with hydraulic drive, GPS interface and control heads at both steering stations. Furuno 502
- Icom M-800 SSB with remote control head and AT-120 automatic antenna tuner.
- Raytheon R20XX radar
- Furuno 1934C Radar chartplotter
- Raytheon 201 VHF
- Vetus Meteoliner barometer
- Furuno BBWXI Satellite weather
- Sirius weather
- Iridium Sat phone
- Danforth Constellation pedestal compass

- Satfind-406 EPIRB with built-in GPS
- Dell 600M laptop interfaced to GPS

Mechanical Equipment and Details

- Ford Sabre 80 HP 4 cylinder marine diesel, mechanically well maintained
- 450 gals fuel capacity, keel and saddle installation in engine space
- Dual RACOR 500 primary filters
- Fuel polishing system built thru 3rd Racor
- Filtered fuel transfer system
- Freshwater cooled
- Borg Warner Velvet Drive hydraulic transmission
- 2 completely independent steering systems. The cockpit pedestal steering is a cable and quadrant mechanical system. The pilothouse system is a Wagner hydraulic system.
- 1 3/4 in. stainless steel propeller shaft, enclosed in shaft tube
- 25 in. 3-blade feathering Hydroline bronze propeller
- 3-blade fixed bronze propeller spare
- Dripless gland packing
- Engine instruments include a tachometer, hour meter, coolant temperature, oil pressure, amp meter and volt meter, high temperature, and low oil pressure warning lights and alarm.
- Engine and transmission controls at both helm stations.
- Lube oil and transmission coolers.
- (2) Rule 3500 bilge pumps w/float switches and high water alarms
- rule 1500 grey water sump pump
- Henderson manual pump
- ball valves and seacocks thru seachest manifold
- Spectra 300 watermaker
- 200 gals water tank capacity
- Numerous spares

Electrical Equipment

- 120/240 VAC ELECTRICAL SYSTEM- 110v yacht with full capability to use 240vac shore power through the transformer
- 240 VAC to 120 VAC 5 kva transformer
- 240 VAC and 120 VAC shorepower cords
- Phosor 6.5kw Generator (2008)
- 2 Magnum 2800w Inverter/charger
- Isolation transformer
- Galvanic corrosion meter
- (6) 120 VAC duplex outlets throughout
- 12 VDC ELECTRICAL SYSTEM

- 90 amp Sonnenschein gel start battery.
- (3) 225 amp Sonnenschein 8D gel house batteries (2007)
- Battery isolator charges house and start batteries when engine is running
- CDM Systems Digital battery monitor (multi bank)
- Marinetics circuit breaker control panel (combined with 120 VAC panel)
- Electro Guard Electrolysis Meter
- 6 solar panels
- Blue Sky solar charger/controller

Исключения

При продаже яхты исключаются личные вещи владельца.

Отказ от ответственности

Компания предоставляет описание судна или яхты добросовестно, но не может гарантировать точность этой информации, а также не ручается за техническое состояние. Покупатель должен проинструктировать своих агентов или оценщиков исследовать представленную информацию более подробно, по собственному желанию. Продажа судна или яхты, изменение цены или снятие с продажи будет происходить без предварительного уведомления.

ФОТОГРАФИИ

At the dock



Hardtop and Pilothouse



Hardtop



Pilothouse



Lower helm



Helm



Pilothouse settee



Companionway entry



Dinette to stbd



view 2



SS sink



Galley



Refrigeration



Master aft cabin



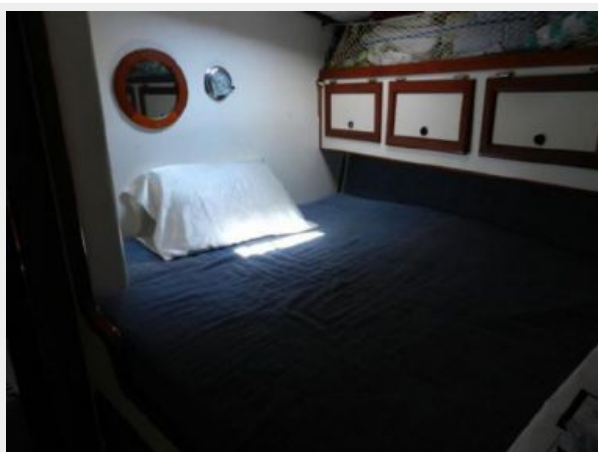
view 2-



Double forward berth



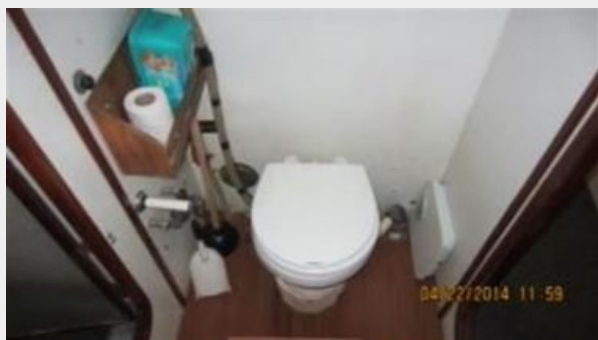
view 2--



Head with shower



head



Engine access under floor boards



Recently serviced engine



Racor filters



Watermaker



Mast and rigging



In mast furling



Solar panels



Wind generator, radar



Heavy ground tackle



Windlass



Double SS rails all around



Jacklines in SS mounted case



Dingy on davits



Hauled out



BBQ grill



Port view



Protected prop



Fresh bottom paint



stern view



КОНТАКТЫ

Андрей Шестаков (Andrey Shestakov) – ведущий яхтенный брокер отдела продаж яхт и судов компании Shestakov Yacht Sales Inc. Официальный представитель Shestakov Yacht Sales Inc. для русскоговорящих клиентов в центральном офисе компании в Майами/Форт Лодердейл/Флорида/США.

Контактная информация

Email: andrey@shestakovyachtsales.com

Web: shestakovyachtsales.com

Телефоны

Краснодарский край: **+7(918)465-66-44**

США, Майами, Флорида: **+1(954)274-4435**

Время работы

Понедельник – Суббота: **9:00 - 21:00**
EDT

Воскресенье: **Закрето**

Адрес



Harbour Towne Marina, 850 NE 3rd St,
STE 213, Dania, FL 33004