

ATHENA — ROYAL HUISMAN



Builder: ROYAL HUISMAN

Year Built: 2004

Model: Cruising Sailboat

Price: PRICE ON APPLICATION

Location: Anguilla

LOA: 295' 4" (90.00m)

Beam: 40' 1" (12.20m)

Min Draft: 19' 0" (5.77m)

Max Draft: 19' 0" (5.77m)

Cruise Speed: 14 Kts. (16 MPH)

Our experienced yacht broker, Andrey Shestakov, will help you choose and buy a yacht that best suits your needs **ATHENA — ROYAL HUISMAN** from our catalogue. Presently, at Shestakov Yacht Sales Inc., we have a wide variety of yachts available on our sale's list. We also work in close contact with all the big yacht manufacturers from all over the world.

If you would like to buy a yacht **ATHENA — ROYAL HUISMAN** or would like help answering any questions concerning purchasing, selling or chartering a yacht, please call **+1(954)274-4435**

TABLE OF CONTENTS

TABLE OF CONTENTS	2
SPECIFICATIONS	4
Overview	4
Basic Information	4
Dimensions	4
Speed, Capacities and Weight	4
Accommodations	4
Hull and Deck Information	5
Engine Information	5
DETAILED INFORMATION	6
Accommodations	6
Mechanical	6
Paint Job	6
Safety & Fire Protection	6
Communication & Navigation	6
Electrical	7
Sails & Rigging	7
Galley	7
Entertainment	7
Deck	7
Tenders & Toys	8
Exclusions	8
Disclaimer	8
PHOTOS	9
CONTACTS	12
Contact details	12
Telephones	12
Office hours	12

Address

12

SPECIFICATIONS

Overview

ATHENA was built to Lloyds LY1 classification. She has always maintained class. She has recently completed and passed all major aspects of her 10 year special survey.

ATHENA has regular yard periods to ensure she is always in superb condition.

Basic Information

Category: Cruising Sailboat

Model Year: 2004

Year Built: 2004

Country: Anguilla

Dimensions

LOA: 295' 4" (90.00m)

Beam: 40' 1" (12.20m)

Min Draft: 19' 0" (5.77m)

Max Draft: 19' 0" (5.77m)

Speed, Capacities and Weight

Cruise Speed: 14 Kts. (16 MPH)

Displacement: 2482405.07012 Pounds

Gross Tonnage: 1103 Pounds

Water Capacity: 6846.01872758 Gallons

Holding Tank: 1471.43832964 Gallons

Fuel Capacity: 27277.08522926 Gallons

Accommodations

Total Cabins: 5

Sleeps: 10

Hull and Deck Information

Hull Material: Aluminum

Exterior Designer: Pieter Beeldsnijder
Design

Interior Designer: Rebecca Bradley Interior
Design

Engine Information

Engines: 2

Manufacturer: Caterpillar

Model: 3516B/ 1492 kW (2000 hp) @ 1600
rpm

DETAILED INFORMATION

Accommodations

ACCOMMODATION 10/12 guests in 5 staterooms and 20 crew INTERIOR STYLING Mahogany wood interior, teak deck house, classic raised panels. New carpets 2014. BRIDGE DECK The Bridge Deck features a Powder Room, Lobby, media lounge and open air lounge area. MAIN DECK The Main Deck features a powder room, the main entrance, a formal dining salon, the main salon with wet bar and an alfresco dining area. LOWER DECK The Lower Deck is comprised of the full-width master cabin with full-width master bath with Jacuzzi, the Owner's Office, walk-in wardrobe, 3 x Queen-sized cabins, 1 x Twin Cabin, the crew area and a diving platform with an oxygen maker for advanced re-breather diving.

Mechanical

Generators: 3 Caterpillar 3408C/ 340 BkW @ 1500 rpm/ 50 Hz with Leroy Somer LSAM 47.1 M6/ 290 EkW (p.f. 0.8) @ 1500 rpm. 1 Emergency Caterpillar 3304B/ 97 BkW @ 1500 rpm/ 50 Hz. With Leroy Somer LSAM 44.2 S7 / 89 EkW @ 1500 rpm. Emergency generator power source, located in lazarette. 2 Wärtsilä Propulsion automatic variable-pitch, four-blade, high-skew/ diam. 1600 mm.

Paint Job

International yacht paint and Awlgrip systems. Full repaint 2011.

Safety & Fire Protection

Life rafts: Four (4) Zodiac 25 persons life rafts Fire-fighting equipment: Miscellaneous firefighting equipment Central HiFog fire extinguishing system Sea water firefighting system Local fire extinguishers Ship alarms: Alarm & Monitoring System Security cameras: Panasonic CCTV throughout ship VDL masthead gyro stabilized camera all fitted 2011

Communication & Navigation

Satcom: 2 x Inmarsat Fleet Broadband (Thrane & Thrane), 2 x 4006 V-Sat units Intercom system: 'Voice over IP' (Avaya) Antenna system: 2 x Satellite systems Vsat and Seatel Satellite telephones: 2 x Iridium (Sailor) Navtex: Furuno GSM: 3 x GSM's (Ericsson), 2 x 4G SSB radio: Sailor VHF: 3 x VHF's (Sailor) Wifi: Yes (2) Computer: Cisco flexible Gigabit backbone switching with XRNTM technology, Internet by use of Satellite communication system + 4G + WiFi+ Shore connection capability Software: OSX Platform GTSCADA for alarm & monitoring from SeaScape RHS Yacht Administration System Entertainment software Apple OSX Navigation:

Gyro compass: 2 x Fibre Optic Gyro compasses (C. Plath) Log: Dopplerlog (Sperry) 2 x Integrated navigation systems (B&G) Autopilot: Robertson Radar: 5 x Radar I Ecdis displays (Kelvin Hughes) new 2011

Electrical

Voltage: 230 I 400 VAC, Based on Schneider Electric PLC's in TCPIIP network Frequency: 50 Hz parallel 3 phase system Shore power converter: 2 x Shore converters 3401500 VAC 40170 Hz 125 kVA Shore cable connection: Dual shore cable connection AC distribution system Transitional power source (UPS) Batteries: 2 x Exide starting battery banks, 420 Ah Automation: Based on Schneider Electric PLC's in TCPIIP network

Sails & Rigging

SAILS Sails by: North Sails, Spectra (new 2014 except topsails) Sails area: Outer jib: 416m² Inner jib: 297m² Staysail: 93m² Foresail: 385m² Fore topsail: 118m² Mainsail main: 430m² Topsail mizzen: 114m² Sail mizzen: 552m² Topsail: 118m² Total Area up-wind: 2,623m² RIGGING Main masts: 58.80m I 192.91ft. Fore mast: 58.80m I 192.91ft. Mizzen mast: 58.80m I 192.91ft. Standing rigging: Ocean Yacht Systems rod rigging and Kevlar runners and triatics Running rigging: Glestein Dyneema and Vectran rope

Galley

Refrigerator: (Barco) 9 refrigerators Freezer: (Heinen & Hopman) 1 custom built compressor unit 1 custom built walk-in fridge: 6.3m 1 custom built walk-in freezer: 14.7m 1 custom built refrigerator: 0,8m 1 custom built freezer: 0,8m 6 custom built refrigerators: 0,3m 1 custom built freezer: 0,3m 2 custom built trash stores: 3,0m

Entertainment

TV/ DVD: New 2012 Computer-based entertainment system from Apple Mac OSX, 1000 movies on demand, 2500 CD's on demand

Deck

Hardware: Rondal custom classic yacht range for blocks, stanchions, bollards, cleats and skylight grills Hatches: Rondal custom hatches Winches: 21 x Rondal reel winches 20 x Rondal drum winches with cleat on top 1 x crane winch 4 x davit winches 4 x runner control winches Anchor system: Bow 2 x Steen 23-9-13 electrical anchor winches 2 x POOL High Holding Power anchors, weight 855 kg 195 mtr. 30 mm stud link galvanized anchor chain, grade U2 Stern 1 x Steen 23-9-08 electrical anchor winch 1 x CQR High Holding power anchor, weight 180 kg 80

mtr 17.5 mm stud link U2 galvanized anchor chain Passarelle/ side gangway: Custom Akerboom Yacht Equipment Crowsnest: 2 x Ronda! to top mizzen mast

Tenders & Toys

Tenders: 2 x 2008 Pascoe RIBs with 370hp inboard Volvo diesel engines. Boats capable of 40knots. New as of October 2008. Toys: 8 x sets of SCUBA gear and compressor 2 x kayaks, 2 x Laser sailing dinghies Sports equipment: 2 x 9m Pascoe tenders 2 x Laser dinghies 2 x Standup Paddle Boards 1 x One person kayak 1 x Two person ,kayak inflatable Assorted fishing gear Surfboards Wakeboard Wakeskate Waterskis X2 Skitubes 1 x Freestyle waterslide X2 Exercise bikes Free weights Yoga and exercise equipment Spear fishing gear Snorkeling gear Kite-surfing gear X4 RC Sail boats

Exclusions

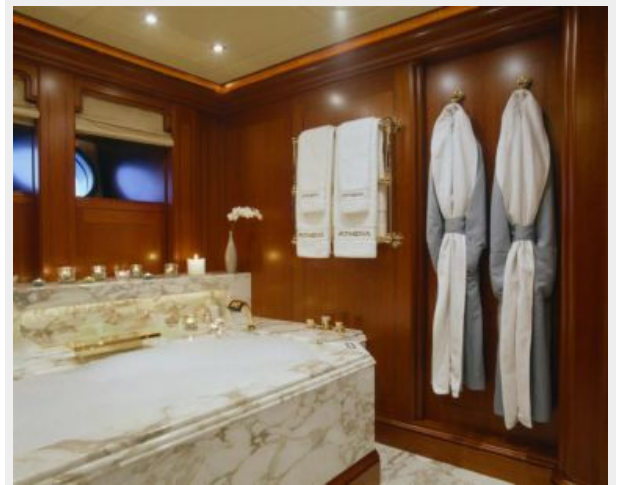
Owner's personal belongings.

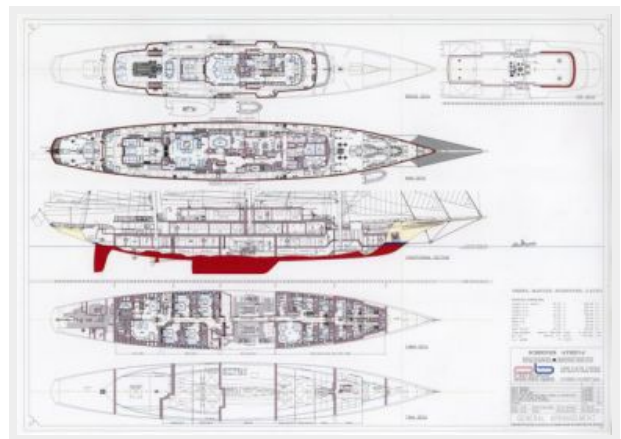
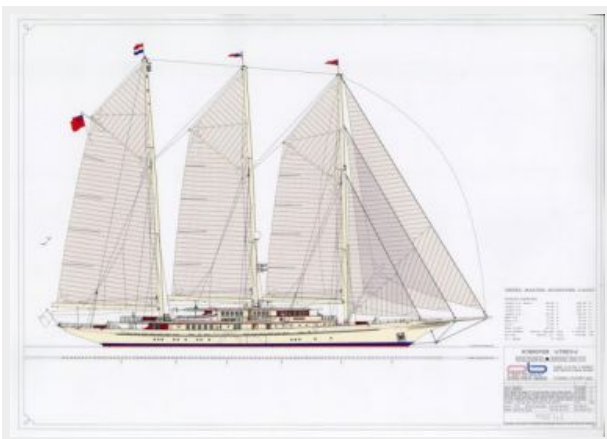
Disclaimer

The Company offers the details of this vessel or yacht in good faith but cannot guarantee or warrant the accuracy of this information nor warrant the condition of the vessel. A buyer should instruct his representatives, agents, or his surveyors, to investigate such details as the buyer desires validated. This vessel or yacht is offered subject to prior sale, price change, or withdrawal without notice.

PHOTOS







CONTACTS

Andrey Shestakov, leading yacht broker of the sales department of Shestakov Yacht Sales Inc. Shestakov Yacht Sales Inc., the official representative of the Miami/Fort Lauderdale FL headquarters.

Contact details

Email: andrey@shestakovyachtsales.com

Web: shestakovyachtsales.com/en/

Telephones

USA: +1(954)274-4435

Office hours

Monday – Saturday: **9:00 - 21:00** EDT

Sunday: **closed**

Address



Harbour Towne Marina, 850 NE 3rd St,
STE 213, Dania, FL 33004