

MER-SEA SAKES — VIKING



Builder: VIKING

Year Built: 2007

Model: Sport Fisherman

Price: PRICE ON APPLICATION

Location: United States

LOA: 74' 0" (22.56m)

Beam: 19' 9" (6.02m)

Min Draft: 5' 7" (1.70m)

Cruise Speed: 28 Kts. (32 MPH)

Max Speed: 38 Kts. (44 MPH)

Our experienced yacht broker, Andrey Shestakov, will help you choose and buy a yacht that best suits your needs **Mer-Sea Sakes — VIKING** from our catalogue. Presently, at Shestakov Yacht Sales Inc., we have a wide variety of yachts available on our sale's list. We also work in close contact with all the big yacht manufacturers from all over the world.

If you would like to buy a yacht **Mer-Sea Sakes — VIKING** or would like help answering any questions concerning purchasing, selling or chartering a yacht, please call **+1(954)274-4435**

TABLE OF CONTENTS

TABLE OF CONTENTS	2
SPECIFICATIONS	8
Overview	8
Basic Information	8
Dimensions	8
Speed, Capacities and Weight	9
Accommodations	9
Hull and Deck Information	9
Engine Information	9
DETAILED INFORMATION	10
Salon	10
Galley	10
Dinette	10
Companionway	10
Master Stateroom	11
Master Head	11
Port Stateroom	11
Port Stateroom Head	11
Forward VIP	12
Forward VIP Head	12
Aft Crew Stateroom	12
Crew Head	12
Enclosed Bridge	12
Electronics	13
Tower	14
Cockpit	14
Deck and Hull	15
Engine Room and Mechanical	15

Exclusions	15
Disclaimer	16
PHOTOS	17
Salon	17
Galley	17
Master Stateroom	17
Enclosed Bridge	17
Salon	17
Salon	17
Salon	18
Salon	18
Salon	18
Salon	18
Salon	18
Crestron Remote	18
Salon	18
Salon	18
Galley	19
Galley	19
Galley	19
Galley	19
Galley	19
Galley	19
Galley	19
Day Head	20
Galley	20
Day Head	20
Storage	20
Storage	21
Storage	21
Companionway	21
Storage	21

Companionway	22
Companionway	22
Companionway	22
Companionway	22
Companionway	23
Master Stateroom	23
Master Stateroom	23
Master Stateroom	23
Master Stateroom	23
Master Stateroom	23
Master Stateroom	24
Master Stateroom	24
Master Head	24
Master Head	24
Port Stateroom	25
Port Stateroom	25
Port Stateroom	25
Port Stateroom	25
Port Stateroom Head	26
Port Stateroom Head	26
Port Stateroom Head	26
VIP Forward	26
VIP Forward Head	27
VIP Forward	27
VIP Forward Head	27
Crews Quarters	27
Crews Quarters	28
Crews Quarters	28
Crews Quarters	28

Crews Quarters Head	28
Crews Quarters	29
Crews Quarters Head	29
Enclosed Bridge	29
Enclosed Bridge	29
Enclosed Bridge	29
Enclosed Bridge	29
Enclosed Bridge	30
Enclosed Bridge	30
Enclosed Bridge	30
Enclosed Bridge	30
Enclosed Bridge	30
Enclosed Bridge	30
Enclosed Bridge	30
Enclosed Bridge	30
Enclosed Bridge	30
Enclosed Bridge	30
Enclosed Bridge	30
Enclosed Bridge	31
Enclosed Bridge	31
Enclosed Bridge	31
Enclosed Bridge	31
Enclosed Bridge	31
Cockpit	31
Cockpit	32
Cockpit	32
Cockpit	32
Cockpit	32
Cockpit	32
Cockpit	33
Cockpit	33
Cockpit	33
Cockpit	33
Cockpit	33
Cockpit	34
Cockpit	34

Cockpit	34
Cockpit	34
Cockpit	34
Cockpit	34
Cockpit	35
Cockpit	35
Cockpit	35
Cockpit	35
Bridge	35
Bridge	35
Bridge Aft Controls	36
Bridge Aft Controls	36
Teaser Reels	36
Teaser Reels	36
Bridge	36
Tower	36
Deck	37
Deck	37
Deck	37
Engine Room	37
Engine Room	37
Engine Room	37
Engine Room	38
Engine Room	38
Engine Room	38
Engine Room	38
Engine Room	38
Engine Room	39
Engine Room	39
Engine Room	39

Engine Room	39
Engine Room	39
Engine Room	39
Engine Room	40
Engine Room	40
Engine Room	40
Engine Room	40
Engine Room	41
Engine Room	41
Engine Room	41
Engine Room	41
Engine Room	42
Engine Room	42
Engine Room	42
Engine Room	42
Engine Room	42
Port Profile	42
Head On	43
Port Profile	43
Starboard Profile	43
Cockpit	43
Stern	43
CONTACTS	44
Contact details	44
Telephones	44
Office hours	44
Address	44

SPECIFICATIONS

Overview

If you have been looking for the cleanest, best equipped, 74' Viking Enclosed Bridge look no further. This low time (1,140 hrs.) boat with M93 MTU 2400 H.P. power plants with full MTU ESP until July of 2015 has it all (Call for additional details on MTU ESP). Equipped with an extensive electronics package by AME, teak cockpit, mezzanine, coaming and cover boards. Maintenance has been performed to the highest standards by Galati Yachts, consistently rated #1 service team in the industry. Berthed since new in the Galati Marina on Anna Maria Island with a full time captain and mate. Beautiful "Fighting Lady Yellow" that accentuates the beautiful teak cockpit package to its fullest.

She has custom interior with upgraded soft goods as well as beautiful granite selections. This boat features the popular four-stateroom layout with crew quarters featuring a private entrance into machine and engine room. Double doors from cockpit into engine room keep the cockpit quiet as possible running back from a long day of fishing. The Cockpit is well equipped for serious fishing; two ice chippers, live well in sole, transom live well with window and lights, and a deluxe Release Marine fighting Chair to set it all off. Upstairs you have complete control for docking or backing down on that sail or marlin with an aft control station including bow thruster controls. The Palm Beach tower is fully equipped with necessary controls and electronics. Fully equipped Enclosed Bridge and navigation center, aft controls, and a tower equipped second to none. A strikingly beautiful, well proportioned yacht at home in any port on the planet. Owner is moving up to another new Viking Yacht.

Basic Information

Category: Sport Fisherman

Model Year: 2007

Year Built: 2007

Country: United States

Dimensions

LOA: 74' 0" (22.56m)

Beam: 19' 9" (6.02m)

Min Draft: 5' 7" (1.70m)

Speed, Capacities and Weight

Cruise Speed: 28 Kts. (32 MPH)

Cruise Speed RPM: 1900 Kts.

Max Speed: 38 Kts. (44 MPH)

Max Speed RPM: 2400 Kts.

Displacement: 135000 Pounds

Water Capacity: 385 Gallons

Holding Tank: 250 Gallons

Fuel Capacity: 3000 Gallons

Accommodations

Total Cabins: 4

Total Heads: 5

Hull and Deck Information

Hull Material: Fiberglass

Engine Information

Engines: 2

Manufacturer: MTU

Model: M93

Engine Type: Inboard

Fuel Type: Diesel

DETAILED INFORMATION

Salon

- Large Custom U-shaped Sofa With Square Corners
- Teak Hi-Lo Coffee Table
- Custom Clear Carpet Runners
- 50" Plasma TV That Raises and Lowers
- Crestron System
- Bose Surround Sound System
- Ice Maker
- Custom Wallpaper and Teak Trim
- Day Head with Storage Locker
- Spiral Staircase to Enclosed Bridge
- Overhead Acrylic Handrail
- Electric Salon Door

Galley

- Custom Granite Countertops with Ogee Edge
- Amtico Cherry and Holly Flooring
- Stainless Steel Sink and Nickel Faucet
- Instant Hot Water Dispenser
- Dishwasher
- (6) Sub-Zero Drawers (3) Refrigerated and (3) Freezers
- Oven
- Kenmore Trash Compactor
- Sharp Stainless Steel Convection Microwave
- 4-Burner Stove
- (2) Custom Bar Stools with Weighted Bottoms

Dinette

- Large U-Shaped Seating with Matching Sofa Height
- Teak Dinette Table

Companionway

- Teak Side Board with Custom Channell Glass
- Full Clear Carpet Runners Canvas on Stairs

- Amtico Cherry Tick and Holly Flooring at Crews Quarters Landing

Master Stateroom

- Fore and Aft King Berth with Storage
- Upgraded Mattress
- Custom Wallpaper
- Teak Side Tables with Teak Pillars
- No Master Loveseat
- Teak Desk
- Custom Headboard
- Master Stateroom Safe
- Hanging Lockers
- LCD Television
- Rod Storage

Master Head

- Amtico Cherry Tick and Holly Flooring
- Brass Faucet
- Granite Countertop in Verde Butterfly with Bone Sink
- Teak Vanity
- Mirrored Ceiling
- Headhunter Toilet
- Full Shower Stall

Port Stateroom

- Twin Bunks
- Upgraded Mattresses
- Hanging Locker
- 20" LCD Television
- Custom Wallpaper and upgraded finishes

Port Stateroom Head

- Amtico Cherry Tick and Holly Flooring
- Brass Faucet
- Granite Countertop in Verde Butterfly with Bone Sink
- Teak Vanity

- Mirrored Ceiling
- Headhunter Toilet
- Full Shower Stall

Forward VIP

- Cross Over Bunks
- Custom Wider Lower Bunk 84" Long, 4" Wide
- Upgraded Mattresses
- 20" LCD Television
- Custom Wallpaper and Upgraded Finishes

Forward VIP Head

- Amtico Cherry Tick and Holly Flooring
- Brass Faucet
- Granite Countertop in Verde Butterfly with Bone Sink
- Teak Vanity
- Mirrored Ceiling
- Headhunter Toilet
- Full Shower Stall

Aft Crew Stateroom

- Amtico Cherry Tick and Holly Flooring (No Carpet)
- Washer and Dryer
- Bunks with Upgraded Mattresses
- Engine Room Door and Private Access
- 15" LCD Television

Crew Head

- Corian Countertop with Bone Sink
- Brass Faucet
- Teak Vanity
- Mirrored Ceiling
- Full Shower Stall

Enclosed Bridge

- L-Shaped Sofa
- Teak Coffee Table
- Custom L-Shaped Starboard Bench Seat
- Custom Sub-Zero Freezer Between Starboard Bench Seat and Sofa
- Port Bar with Sub-Zero Refrigerator and Freezer with Ice Maker
- Port Bar with Bottle Storage and No Sink
- Sharp LCD Television
- Stidd Helm Chair in Black
- Electronic Trolling Valves
- Aft Bridge Seating
- Aft Control Station with Full Controls and Furuno NAVnet and NAVpilot
- Rupp OutRiggers/Center Rigger
- Miya Epoch Millennium Teaser Reels

Electronics

- Crestron 2-Series Control System
- Crestron CNX-PVID8x3 Video Distribution System
- Inegra NAS-2.6 Music Server
- Bose Lifestyle 48
- (5) 17" VEI Screens
- (2) Furuno RD-30
- iCom IC-M602 and M802 VHF Radios
- KVH Gyro Trac
- Furuno NAVnet
- Furuno NAVpilot
- Panasonic KXT-T7737 Phone System
- KVH Trac Phone
- HD-7 Satellite System
- Furuno 25KW Radar with 8' Array
- Furuno NAVnet Radar 12KW with 4' Array
- VEI MARCI PC
- XM Weather System
- Furuno NAVnet Network Video Sounder
- Furuno 50khz 2Kw Transducer
- Furuno 200khz 2Kw Transducer
- Furuno CH-300 Searchlight Sonar with hull tube
- (2) VEI 15" LCD Displays Port and Starboard Side Pannels
- Engine Room Camera System (4) Elbex Ball Cameras in Engine Room
- (4) Elbex Round Cameras (2) Forward Facing Aft outboard (2) Aft facing forward inboard
- NVTI Thermal Imaging Camera* *Note: Company is no longer in business and not subject to any survey repairs or adjustments.
- VEI 12" LCD Display on Aft Station

- Furuno NAVnet System on Aft Station
- Furuno Autopilot Second Station on Aft Station
- Furuno NAVnet System on Tower
- VEI 12" LCD Display on Tower
- Furuno RD-30 Depth Display on Tower
- Furuno Autopilot Second Station on Tower
- KVH 24" Direct TV System with (6) Receiver Boxes
- Fax Machine in Enclosed Bridge
- Magellan Security System
- Latham Sportfish Outrigger Camera System with one camera on each Outrigger and Center mounted for Cockpit
- Total AME Electronics cost over \$440,000

Tower

- Palm Beach Tuna Tower
- Center Ladder
- (2) Quartz Lights
- Tower Sunshade
- Bench Seat with Backrest
- V-Series Lights on Center bar on Sunshade in Blue and underneath Platform
- Furuno NAVnet System on Tower
- VEI 12" LCD Display on Tower
- Furuno RD-30 Depth Display on Tower
- Furuno Autopilot Second Station on Tower

Cockpit

- Full Teak Cockpit, Coaming Boards, and Cover Boards
- Custom Grill
- Refrigerated Step Box
- Bait Freezer
- (4) Gunwale Rod Holders
- Live Well in Sole with (1) 1500 GPh Pump
- Transom Live well with Glass Window and Lights and (2) 500 GPH Pumps
- Mezzanine Seating
- Transom Swim Steps
- Ice Chipper with Discharge into Sole Box
- (3) Rod Holders in each Haunch for a Total of (6)
- (2) 24V Outlets forward under coaming, one on each side
- Awlgrip Lazarette
- Y-Valve for Fresh and Saltwater Washdowns

- Misterters in Cockpit Overhang
- Storage Lockers Under Port and Starboard Coamings
- Additional Eskimo Icechiper to Discharge into Fishbox
- Release Marine Teak Fighting Chair
- Partial Custom Cockpit Shade

Deck and Hull

- Fighting Lady Yellow Hull Color
- Freshwater Wash-down at anchor locker
- Anchor Locker and Forward Bilge in Awlgrip
- Rub Rail Painted to Match Gelcoat
- Kiddie Rail on side of House Below Windows
- Sliding Fender Track Under Rub rail
- Under mounted Bridge Side Handrails
- Additional Fuel Tank Forward for a total of (3)
- Lewmar V4 Stainless Steel Hydraulic Windlass
- Hydraulic Bow Thruster
- Bow Pulpit and Railings

Engine Room and Mechanical

- Twin MTU 16V 2000 M93 Engines with 2400 HP Each
- Twin Onan Generators
- Door into Crews quarters
- Awlgrip Brass Thru-Hulls and Sea Strainers
- All pumps Painted White
- Line Run from Oil Change System to Cockpit Dockside Box
- Air Compressor 110V
- Headhunter Fresh Water Pump
- Auxiliary DC Fresh Water Pump
- Tool Box
- Engine Room Air-conditioning Unit
- Furuno Searchlight Sonar System
- 1400 GPD Watermaker
- Underwater Exhaust System

Exclusions

Owner's personal belongings.

Disclaimer

The Company offers the details of this vessel or yacht in good faith but cannot guarantee or warrant the accuracy of this information nor warrant the condition of the vessel. A buyer should instruct his representatives, agents, or his surveyors, to investigate such details as the buyer desires validated. This vessel or yacht is offered subject to prior sale, price change, or withdrawal without notice.

PHOTOS

Salon



Galley



Master Stateroom



Enclosed Bridge



Salon



Salon



Salon



Salon



Salon



Crestron Remote



Salon



Salon



Galley



Galley



Galley



Galley



Galley



Galley



Galley



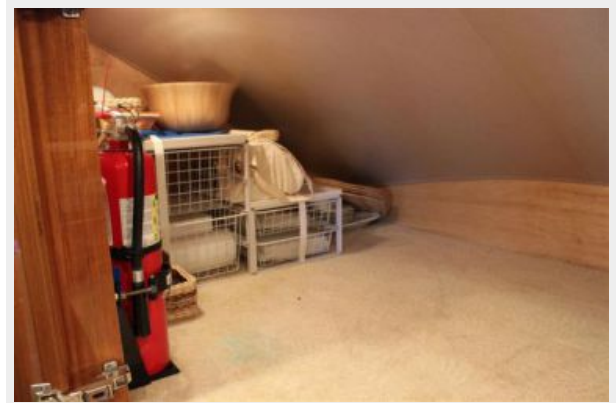
Day Head



Day Head



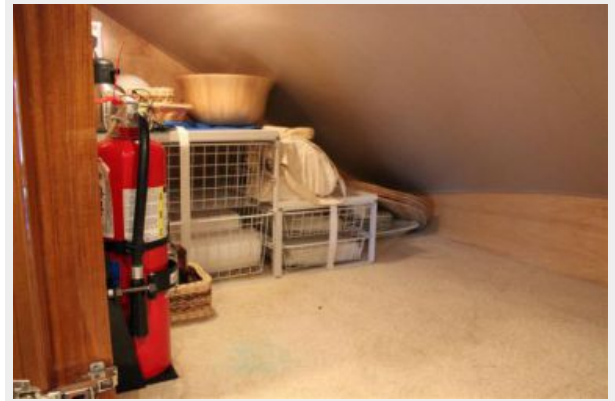
Storage



Storage



Storage



Companionway

Storage



Companionway



Companionway



Companionway



Companionway



Companionway



Master Stateroom



Master Stateroom



Master Stateroom



Master Stateroom



Master Stateroom



Master Stateroom



Master Stateroom



Master Head



Master Head



Port Stateroom



Port Stateroom



Port Stateroom



Port Stateroom



Port Stateroom Head



Port Stateroom Head



Port Stateroom Head



VIP Forward



VIP Forward



VIP Forward Head



VIP Forward Head



Crews Quarters



Crews Quarters



Crews Quarters



Crews Quarters



Crews Quarters Head



Crews Quarters Head



Crews Quarters



Enclosed Bridge



Enclosed Bridge



Enclosed Bridge



Enclosed Bridge



Enclosed Bridge



Enclosed Bridge



Enclosed Bridge



Enclosed Bridge



Enclosed Bridge



Enclosed Bridge



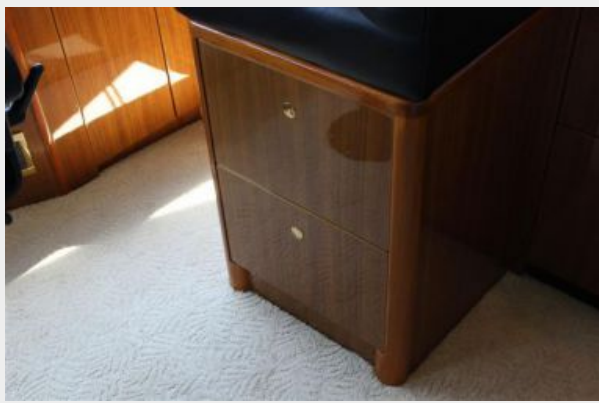
Enclosed Bridge



Enclosed Bridge



Enclosed Bridge



Enclosed Bridge



Enclosed Bridge



Cockpit



Cockpit



Cockpit



Cockpit



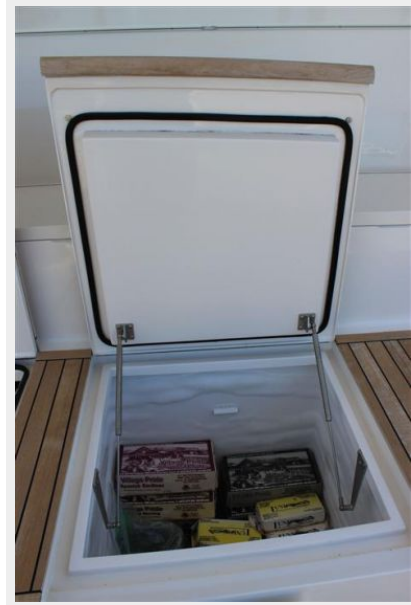
Cockpit



Cockpit



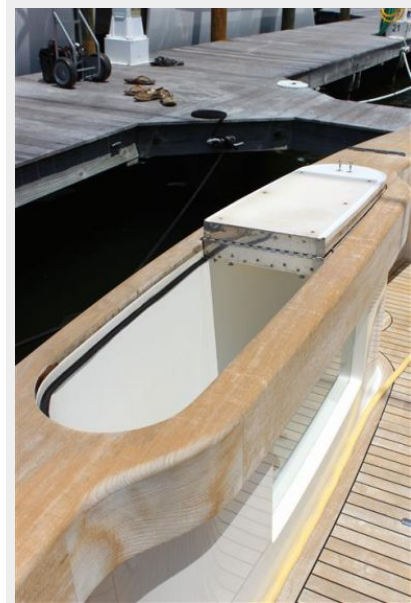
Cockpit



Cockpit



Cockpit



Cockpit



Cockpit



Cockpit



Cockpit



Cockpit



Cockpit



Cockpit



Cockpit



Cockpit



Cockpit



Bridge



Bridge



Bridge Aft Controls



Bridge Aft Controls



Teaser Reels



Teaser Reels



Bridge



Tower



Deck



Deck



Deck



Engine Room



Engine Room



Engine Room



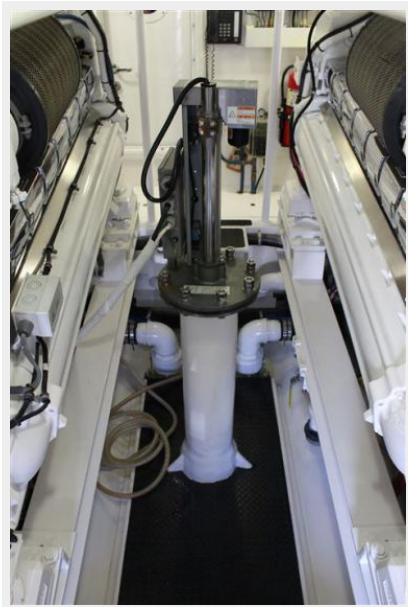
Engine Room



Engine Room



Engine Room



Engine Room



Engine Room



Engine Room



Engine Room



Engine Room



Engine Room



Engine Room



Engine Room



Engine Room



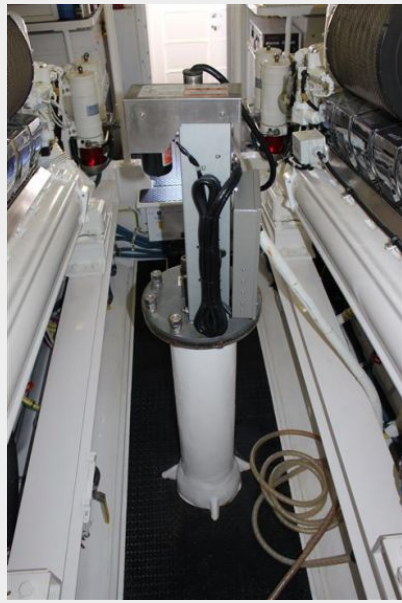
Engine Room



Engine Room



Engine Room



Engine Room



Engine Room



Engine Room



Engine Room



Engine Room



Engine Room



Engine Room



Engine Room



Port Profile



Port Profile



Head On



Starboard Profile



Cockpit



Stern



CONTACTS

Andrey Shestakov, leading yacht broker of the sales department of Shestakov Yacht Sales Inc. Shestakov Yacht Sales Inc., the official representative of the Miami/Fort Lauderdale FL headquarters.

Contact details

Email: andrey@shestakovyachtsales.com

Web: shestakovyachtsales.com/en/

Telephones

USA: +1(954)274-4435

Office hours

Monday – Saturday: **9:00 - 21:00** EDT

Sunday: **closed**

Address



Harbour Towne Marina, 850 NE 3rd St,
STE 213, Dania, FL 33004