

HATTERAS 80 MOTOR YACHT — HATTERAS



Судостроитель: HATTERAS

Год постройки: 2015

Модель: Моторная яхта

Цена: **ЦЕНА ЯХТЫ ПО ЗАПРОСУ**

Местонахождение: United States

Длина общая: 80' 0" (24.38m)

Ширина: 21' 3" (6.48m)

Макс. осадка: 5' 8" (1.73m)

Купить Hatteras 80 Motor Yacht — HATTERAS а также выбрать подходящую вам яхту из нашего каталога яхт вам поможет опытный яхтенный брокер Андрей Шестаков. На сегодняшний день компания Shestakov Yacht Sales Inc. имеет большое количество яхт в собственном списке продаж, а также тесно сотрудничает со всеми крупными яхтенными производителями по всему миру. Для того чтобы купить яхту Hatteras 80 Motor Yacht — HATTERAS а также проконсультироваться по любому вопросу связанному с покупкой, продажей, чартером яхт позвоните по телефону **+7(918)465-66-44**.

ОГЛАВЛЕНИЕ

ОГЛАВЛЕНИЕ	2
ХАРАКТЕРИСТИКИ	4
Основная информация	4
Размеры	4
Скорость, вместимость и масса	4
Размещение	4
Корпус и палуба	5
Информация о двигателе	5
ПОДРОБНОЕ ОПИСАНИЕ	6
Exterior Finish & Construction	6
Hardware & Miscellaneous	7
Engine Compartment & Bilge	9
Electrical Systems	12
Flybridge & Bridge Deck	13
Optional Enclosed Flybridge	15
Optional Lower Helm	17
Sport Deck	18
Salon	19
Lower Forward Companionway	20
Master Stateroom	21
Bow Guest Stateroom	21
Starboard Guest Stateroom	23
Master Head	24
Optional His & Her Master Head	24
Guest Heads	25
Day Head	25
Captain & Crew Staterooms	26
Crew Head	26

Crew Area	27
Исключения	27
Отказ от ответственности	27
ФОТОГРАФИИ	29
КОНТАКТЫ	30
Контактная информация	30
Телефоны	30
Время работы	30
Адрес	30

ХАРАКТЕРИСТИКИ

Основная информация

Тип судна: Моторная яхта	Подкатегория: Flybridge
Модельный год: 2015	Год постройки: 2015
Страна: United States	Верх: Hardtop
Открытая палуба мостика: Да	

Размеры

Длина общая: 80' 0" (24.38m)	Длина по ватерлинии: 68' 10" (20.98m)
Ширина: 21' 3" (6.48m)	Макс. осадка: 5' 8" (1.73m)
Длина привального бруса: 79' 10" (24.33m)	

Скорость, вместимость и масса

Водоизмещение: 190000 Pounds	Вместимость воды: 326 Gallons
Вместимость сточного бака: 388 Gallons	Объем топливного бака: 2858 Gallons

Размещение

Всего кают: 4	Всего ком. состава: 4
Каюты экипажа: 2	Койки экипажа: 3
Спальных мест экипажа: 4	Комм. состав экипажа: 1

Корпус и палуба

Материал корпуса: Fiberglass

Материал палубы: Fiberglass

Цвет корпуса: White

Информация о двигателе

Двигатели: 2

Производитель: Caterpillar

Модель: C32A

Тип двигателя: Inboard

Тип топлива: Diesel

ПОДРОБНОЕ ОПИСАНИЕ

Exterior Finish & Construction

- Isophthalic / NPG gelcoat, exterior layer, white
- Blister resistant vinylester resin in hull bottom skin coat
- Hull and superstructure painted with a premium linear polyester/polyurethane coating for improved cosmetics & increased durability
- Polymer/copper based anti-fouling bottom paint
- Boot stripe, linear polyester/polyurethane coating
- Decks, non-skid surface, polyurethane paint with polymeric beads
- Solid fiberglass hull bottom with premium vinylester resins
- Hull sides and superstructure laminated with PVC foam core and premium vinylester resins
- Fiberglass stringers
- Steel laminated into longitudinal stringers at key locations to create engine foundations
- Bulkheads, athwartships and interior decks of resin-infused composite construction using PVC foam core

Hardware & Miscellaneous

- Wood bulkheads, cabinetry and trim with a satin polyester finish in cherry or African mahogany
- Fabric headliner installed on track system for service access
- Fabric covered hullside(s) and bulkhead(s) installed on track system for service access
- Fixed frameless windows with tinted safety glass
- All hardware polished chrome with brushed chrome in galley
- Welded and polished stainless-steel anchor chute and roller
- 110 pound plow anchor and deck hawse pipe
- Windlass, Maxwell VWC-4,000 pound hydraulic with 300 feet of acculoy hot dipped galvanized chain with deck mounted control switches
- Integrated hydraulic digital 35 hp thruster/stabilizer system with 7.5 square foot fins
- Six polished stainless-steel springline cleats with chafing strips, through-bolted in aluminum backing plates
- Polished stainless-steel bow cleats, through bolted in aluminum backing plates
- Polished stainless-steel stern cleats, through bolted in aluminum backing plates

- Polished 1 1/4” stainless-steel rails on bow, sidedeck and flybridge, drilled and tapped in aluminum backing plates
- Fog bell
- Dual air horns
- Zincs on rudders and shafts
- Alloy 22 high strength propeller shafts
- Manganese bronze dripless rudder seals
- Dripless shaft seals
- Portable “drychem” fire extinguishers in compliance with United States Coast Guard and ABYC standards
- Portable 13 lb. Halotron-1 fire extinguishers throughout
- Stainless-steel trim tabs
- Manganese bronze struts
- Stainless-steel rudders
- Propellers, Nibral high performance
- Sea stairs with dedicated storage
- Bow lounge seat with cover
- Central vacuum system
- Freshwater wash down outlet, bow
- Stainless steel deck plates for fuel fill, water fill, and waste pump-out
- Engine and generator exhaust exits through hull side near transom

- Generator exhaust, water separator
- Anchor locker on bow deck
- 1400 GPD watermaker
- Fender track, port and starboard
- Safe

Engine Compartment & Bilge

- Water manifold blocks with centralized shut-off valve for sinks and showers
- Pultruded fiberglass rudder shelf
- AC fluorescent lights
- DC lights
- DC ventilation blower
- Twin diesel, freshwater-cooled main engines with electrically controlled marine gears, neutral interlocks, exhaust silencers, engine hour meters, alternators, fuel filters and seawater strainers
- FM200 fixed fire extinguishing system for engine/generator compartment with automatic and remote manual controls plus audible and visual discharge signals
- Two 27.5kW freshwater-cooled Electronic Quiet Diesel Onan generators(D) with shock mounts, sound enclosure, remote start, seawater strainer, fuel/water separator, hour meter, and water lift muffler

- Pressure and temperature controlled forced air induction system with water separators for engine combustion air and fans ducted from flybridge
- Polyethylene water lines
- Electric fuel transfer system with filtration and dry tank protection for pump (2)
- Freshwater fill hose for engines and generator
- AC compressed air system with air line and regulator
- Dockside water inlet with pressure regulating valve and automatic dockside tank fill
- 24-volt DC bilge and sump pumps, six at 3700 gph, one at 2200 gph with heavy-duty float switches and protective guards
- Bronze/chrome ball-valves through-bolted in solid fiberglass on all underwater through hull fittings with electrical bonding throughout
- Pressurized 230 volt AC freshwater pump
- Water heaters one 30 gallon, one 20 gallon midship and one 6 gallon aft for crew
- Fiberglass fuel tanks constructed with fireretardant resin and bronze fittings, and coated with fire-retardant paint
- Fiberglass water tanks, constructed with bronze fittings and materials which comply with the requirements of Title 21 for food and drugs.

- Fiberglass holding tanks, constructed with bronze fittings and 24-volt DC sewage pump, plumbed for dockside pump-out, with 3/4 full display and alarm as part of systems monitor programmable logic controller
- 110-volt AC oil changing system for engines, generators and gears
- Fuel filter/water separator, generators
- Sealed shower sump, two each
- Duplex fuel filters/water separators with bypass manifold, engines
- Electric fuel priming pumps, engines
- Welded and polished stainless-steel overhead grab rails
- Painted polyurethane engine room and bilges
- United States Coast Guard approved fuel lines
- Discharge sea chests
- 1" stainless-steel steering tie bar with pivoting self-aligning ball joint connection at all cylinder and tie bar connections
- Insulation in deck
- Pick-up sea chests
- Digital monitoring for main engines
- Start / stop switches and hour meter
- Aluminum work bench
- Washer/dryer

Electrical Systems

- Two 24 volt banks of heavy-duty, 12 volt marine batteries mounted in fire retardant fiberglass boxes
- Tin-coated wiring with insulation, labeled and color coded
- Gel/lead acid compatible 240 volt automatic battery charger, 50/60Hz
- Automatic battery paralleling system with switch at control console
- Two 240 volt, 100 amp, transformer connected retractable shore cords with over-current protection and wireless remote control
- DC LED lights and fixtures
- AC duplex outlet(s) with ground fault protection
- Battery control panel with fuses and isolation switches
- DC electronics panel with magnetic circuit breakers
- AC and DC distribution panels with magnetic circuit breakers
- AC switching panel with source selector switches, volt meter, ammeter, frequency meter, generator start/stop controls, and distribution panel selector switches
- Navigation lights
- Ground fault protection on AC receptacles and AC

lighting circuits

- Chilled water air conditioning, (2) 4-ton, with reverse-cycle heating, with soft starting AC compressors
- TV antenna, omni-directional
- Carbon monoxide detectors, throughout
- Smoke detectors, throughout

Flybridge & Bridge Deck

- Computer controlled ethernet monitoring system with LCD touch screen display providing visual and audible signals for engines, gears, generators, high bilge water, fire warning in engine compartment, fire extinguisher discharge in engine compartment, AC power loss, smoke detectors, all tank level indication, low battery voltage, alternator failure, battery charger failure, bilge pump control and run indication, holding tank pump control and run indication, and carbon monoxide detectors. A history log is maintained for critical alarms and trends may be set up to view various parameters with respect to time. Additional monitoring points may be added to the system economically and easily.
- Northstar GPS/plotter, Icom VHF, Simrad autopilot repeater, Furuno depth and temp

- Welded and polished stainless-steel grab rails and stanchions
- Two lounges with vinyl-covered polyfoam cushions and storage underneath
- Framed glass windshield
- Control station with necessary switches
- Painted (polyurethane) aluminum framed radar arch with mast, dual radar platform, and anchor light
- Compass with dimmable light
- Single-lever clutch and throttle controls (electronic) with emergency back-up and engine synchronization
- Hydraulic power-assisted steering
- Two (2) adjustable helmchairs
- Sliding door to galley
- DC AM/FM stereo receiver with CD player and speakers
- Wet bar with sink, refrigerator, icemaker and three barstools
- Stairs from pilothouse to bridge
- Molded-in stairs to aft deck with hatch
- Neutral interlock switches allowing engine to start in neutral only
- Fuel level gauges
- Canvas console cover

- Freshwater wash down outlet
- Storage under control console with DC lighting
- Solid-surface table with stainless-steel pedestal
- Cabinet with double electric grills and storage

Optional Enclosed Flybridge

- Computer controlled ethernet monitoring system with LCD touch screen display providing visual and audible signals for engines, gears, generators, high bilge water, fire warning in engine compartment, fire extinguisher discharge in engine compartment, AC power loss, smoke detectors, all tank level indication, low battery voltage, alternator failure, battery charger failure, bilge pump control and run indication, holding tank pump control and run indication, and carbon monoxide detectors. A history log is maintained for critical alarms and trends may be set up to view various parameters with respect to time. Additional monitoring points may be added to the system economically and easily.
- Northstar GPS/plotter, Icom VHF, Simrad autopilot repeater, Furuno depth and temp
- Welded and polished stainless-steel rails and stanchions
- Elevated L-shaped lounge with storage to port,

lounge to starboard

- Stone table with stainless-steel pedestals
- Two (2) adjustable helmchairs
- Lounge with storage on flybridge's port aft deck
- Fixed frameless windows and windshield with safety glass
- Intermittent electric windshield wipers/washers with controls
- Padded vinyl chart flat
- Forward control station with all necessary switches, single-lever electric clutch and throttle controls, synchronizer, back-up controls, power assisted steering, compass and electronic console
- Starboard fold-down wing station on boat deck
- Carpeting
- Wet bar with refrigerator, icemaker and bottle and glass storage
- Electric aft window, port
- 32" LED TV
- DC AM/FM stereo receiver with CD/DVD player and speakers
- Storage lockers, port and starboard
- Defogger
- Sliding door
- HVAC control

Optional Lower Helm

- Computer controlled ethernet monitoring system with LCD touch screen display providing visual and audible signals for engines, gears, generators, high bilge water, fire warning in engine compartment, fire extinguisher discharge in engine compartment, AC power loss, smoke detectors, all tank level indication, low battery voltage, alternator failure, battery charger failure, bilge pump control and run indication, holding tank pump control and run indication, and carbon monoxide detectors. A history log is maintained for critical alarms and trends may be set up to view various parameters with respect to time. Additional monitoring points may be added to the system economically and easily.
- Control station with all necessary switches and dimmable lighted instruments
- Integrated controls (electronic) with emergency back-up and engine synchronization
- Compass with dimmable light
- Hydraulic power assisted steering
- Intermittent electric windshield wipers/washers with controls
- Defogger
- Northstar GPS/plotter, Icom VHF, Simrad autopilot

repeater, Furuno depth and temp

- Helm seat
- Elevated lounges with stone surface table (2) and stainless-steel pedestals

Aft Deck

- Molded bench seating with cushions and cover
- Molded fiberglass steps to flybridge
- Molded fiberglass steps with lights to sport deck, port and starboard
- Boarding gates, port and starboard side decks
- Amplifier, speakers, and volume control integrated with Bose salon stereo
- AC duplex outlet(s) with ground fault protection
- DC LED overhead lighting
- Steps to side decks, port and starboard
- Door with stairwell to crew's quarters/engine room
- Teak table with cover
- Freshwater wash down outlet
- Fold-down wing station port side

Sport Deck

- Freshwater wash down outlet with hose connection
- Welded and polished stainless-steel railing
- Hot/cold hand-held shower
- Molded-in fiberglass steps with DC lights to aft deck

- Pop-up cleats (2)
- Swim platform with stainless steel re-boarding ladder
- Watertight door to crew quarters and engine room

Galley

- Amtico flooring
- Microwave/convection oven
- 22" LED TV
- Amplifier, speakers, and volume control integrated with Bose salon stereo
- Stone table with stainless-steel pedestals
- Pantograph doors with locks, port and starboard, to side decks
- Stone countertops and backsplash with stainless sinks and storage cabinets made of finished wood
- Upright AC refrigerator with freezer and icemaker
- AC four-burner ceramic cooktop
- One-half hp continuous feed garbage disposal
- HVAC control
- Dishwasher
- Oven
- Center island with storage and stone countertops
- Stairway to flybridge

Salon

- Carpeting
- Decorative wood valance with silhouettes in

recessed pockets

- Welded and polished stainless-steel sliding door

to aft deck

- Buffet Cabinet
- 50" LED TV
- BOSE LS-V35 system with AM/FM, iPod Dock, and surround sound speakers
- Blue Ray disc player
- Ice maker
- Custom sofa with storage
- Throw pillows
- Cocktail table
- Two club chairs
- HVAC control
- Formal dining table with six chairs
- End table
- Wet bar with bottle and glass storage
- Decorative soffit design in headliner with wood accents

Lower Forward Companionway

- Carpeting
- Flush panel doors with door stops to staterooms and head(s)
- Lighted stairway to salon
- Washer/dryer

- Cedar-lined linen storage locker

Master Stateroom

- Carpeting
- King-sized berth with upholstered headboard and cedar-lined storage underneath
- Upholstered berth base
- HMC System 3 mattress, spread, throw pillows, pillows, pillow shams, mattress pad and sheets
- Cedar-lined hanging/storage lockers with automatic light
- Nightstands with drawers
- Dressers with drawers, port and starboard
- 32" LED TV
- BOSE LS-235 system with AM/FM, iPod Dock, and speakers
- Blue Ray disc player
- Full-length mirror
- Private access to head
- Decorative wood valance with fixed Roman shade and duettes
- HVAC control
- Portlights, port and starboard

Bow Guest Stateroom

- Carpeting

- Queen-sized tapered berth with upholstered headboard, drawer, and cedar-lined storage underneath
- Upholstered berth base
- HMC System 3 mattress, spread, throw pillows, pillows, pillow shams, mattress pad and sheets
- Cedar-lined hanging/storage lockers with automatic light
- Nightstands, port and starboard
- 26" LED TV
- BOSE LS-235 system with AM/FM, iPod Dock, and speakers
- Blue Ray disc player
- Full-length mirror
- Private access to head
- HVAC control
- Screened overhead hatch with privacy cover
- Overhead storage cabinets, port and starboard
- Portlights, port and starboard with privacy blinds

Port Guest Stateroom

- Carpeting
- Twin berths with upholstered headboards
- Upholstered berth base(s)
- HMC System 3 mattress, spread, throw pillows, pillows, pillow shams, mattress pad and sheets
- Cedar-lined hanging/storage locker with automatic

light

- Nightstands with drawers
- 32" LED TV
- BOSE LS-235 system with AM/FM, iPod Dock, and speakers
- Blue Ray disc player
- Full-length mirror
- Private access to head
- HVAC control
- Portlight
- Blanket lockers above berth and hullsides

Starboard Guest Stateroom

- Carpeting
- Twin berths with upholstered headboards that convert to queen berth
- Upholstered berth base(s)
- HMC System 3 mattress, spread, throw pillows, pillows, pillow shams, mattress pad and sheets
- Cedar-lined hanging/storage locker with automatic light
- Nightstand with drawers
- 22" LED TV
- DC AM/FM stereo receiver with CD/DVD player and speakers
- Full-length mirror

- Private access to head
- HVAC control
- Portlight
- Blanket lockers above berth and hullsides

Master Head

- Stone flooring
- Plexi-mirrored ceiling
- Wallcovering
- Stone countertop, backsplash, and sidesplash with two undermount sinks
- Stone baseboards
- Stone shower with frameless door
- Storage cabinet with mirror
- Base cabinet with storage
- Towel bar
- Freshwater toilet
- 120 volt AC air freshener blower
- Plexi-mirror around upper cabinet
- Holding tank 3/4 full indicator light

Optional His & Her Master Head

- Includes standard master head features plus:
 - Additional frameless shower door
 - Additional storage cabinet with mirror
 - Additional base cabinet

- Additional plexi-mirror around upper cabinet
- Additional towel bar
- Additional freshwater toilet

Guest Heads

- Stone flooring
- Plexi-mirrored ceiling
- Wallcovering
- Stone countertop, backsplash and sidesplash with porcelain undermount sink
- Stone baseboards
- Stone shower with frameless door
- Mirror
- Base cabinet with storage
- Towel bar
- Freshwater toilet
- 120 volt AC air freshener blower
- Plexi-mirror around upper cabinet
- Holding tank 3/4 full indicator light

Day Head

- Amtico flooring
- Plexi-mirrored ceiling
- Wallcovering
- Stone countertop with porcelain undermount sink
- Hardwood baseboards

- Glass mirror above vanity
- Base cabinet with storage
- Towel ring
- Freshwater toilet
- 120 volt AC air freshener blower
- Holding tank 3/4 full indicator light

Captain & Crew Staterooms

- Carpeting
- Queen berth (captain) / over/under berths (crew)
- Upholstered berth base(s)
- HMC System 1 mattress, spread, throw pillows, pillows, pillow shams, mattress pad and sheets
- Cedar-lined hanging/storage locker with automatic light
- 32" (captain) / 22" (crew) LED TV
- DC AM/FM stereo receiver with CD/DVD player and speakers
- Full-length mirror
- HVAC control
- Nighstand (captain) / storage drawer (crew)

Crew Head

- Amtico flooring
- Wallcovering
- solid-surface countertop with integral sink and

storage cabinet

- Stall shower with door and automatic sump pump
- Mirror
- Towel bar
- Freshwater toilet
- Recirculating fan
- Holding tank 3/4 full indicator light

Crew Area

- Amtico flooring
- Microwave/convection oven
- Refrigerator
- Lounge with solid-surface dinette table
- Base cabinet with solid-surface countertop and stainless steel sink
- Stairwell from aft deck
- Door to engine room with viewing window
- Watertight door from swim platform

Исключения

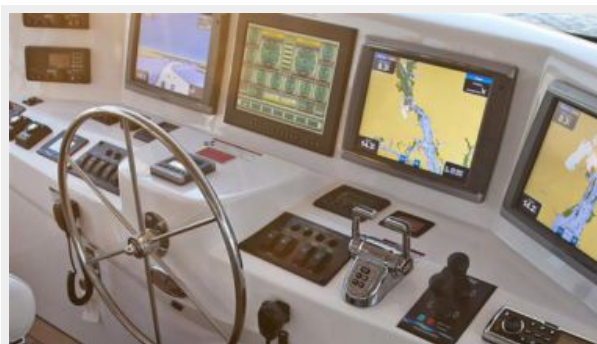
При продаже яхты исключаются личные вещи владельца.

Отказ от ответственности

Компания предоставляет описание судна или яхты добросовестно, но не может гарантировать точность этой информации, а также не ручается за техническое состояние. Покупатель должен проинструктировать своих агентов или оценщиков исследовать представленную информацию более подробно, по собственному желанию. Продажа судна или яхты, изменение цены или снятие с продажи будет происходить без

предварительного уведомления.

ФОТОГРАФИИ



КОНТАКТЫ

Андрей Шестаков (Andrey Shestakov) – ведущий яхтенный брокер отдела продаж яхт и судов компании Shestakov Yacht Sales Inc. Официальный представитель Shestakov Yacht Sales Inc. для русскоговорящих клиентов в центральном офисе компании в Майами/Форт Лодердейл/Флорида/США.

Контактная информация

Email: andrey@shestakovyachtsales.com

Web: shestakovyachtsales.com

Телефоны

Краснодарский край: **+7(918)465-66-44**

США, Майами, Флорида: **+1(954)274-4435**

Время работы

Понедельник – Суббота: **9:00 - 21:00**
EDT

Воскресенье: **Закрито**

Адрес



Harbour Towne Marina, 850 NE 3rd St,
STE 213, Dania, FL 33004