

VALKYRIE — CRESCENT



Судостроитель: CRESCENT

Год постройки: 2001

Модель: Моторная яхта

Цена: **ЦЕНА ЯХТЫ ПО ЗАПРОСУ**

Местонахождение: United States

Длина общая: 120' 0" (36.58m)

Ширина: 25' 0" (7.62m)

Мин. осадка: 6' 6" (1.98m)

Крейс. скорость: 17 Kts. (20 MPH)

Макс. скорость: 21 Kts. (24 MPH)

Купить **VALKYRIE — CRESCENT** а также выбрать подходящую вам яхту из нашего каталога яхт вам поможет опытный яхтенный брокер Андрей Шестаков. На сегодняшний день компания **Shestakov Yacht Sales Inc.** имеет большое количество яхт в собственном списке продаж, а также тесно сотрудничает со всеми крупными яхтенными производителями по всему миру.

Для того чтобы купить яхту **VALKYRIE — CRESCENT** а также проконсультироваться по любому вопросу связанному с покупкой, продажей, чартером яхт позвоните по телефону **+7(918)465-66-44**.

ОГЛАВЛЕНИЕ

ОГЛАВЛЕНИЕ	2
ХАРАКТЕРИСТИКИ	6
Обзор	6
Основная информация	6
Размеры	6
Скорость, вместимость и масса	7
Размещение	7
Корпус и палуба	7
Информация о двигателе	8
ПОДРОБНОЕ ОПИСАНИЕ	9
Accommodations	9
Salon	10
Dining	10
Day Head	10
Galley	11
Master Stateroom	11
Master Head	11
VIP Stateroom	12
Guest Stateroom 3	12
Guest Stateroom 4	13
Pilothouse	13
Fly Bridge	14
Boat Deck	14
Aft Deck	15
Aft Deck Head	15
Cockpit	15
Side Decks and Foredeck	16
Engineer's Room	16

Engine Room	17
Engineer's Stateroom	18
Captain's Stateroom	18
Crew Stateroom 2	18
Hull	18
Machinery	19
Communication Systems	19
Navigation Systems	19
Entertainment System	20
Galley and Laundry Equipment	20
Tenders and Toys	20
Deck Equipment	20
Security, Safety & Fire Protection	20
Exclusions	21
Исключения	21
Отказ от ответственности	21
ФОТОГРАФИИ	22
120' Crescent	22
Salon	22
Dining	22
Dining Forward View	22
Salon Game Table	22
Day Head	22
Galley	23
Galley Island	23
Galley Dinette	23
Master Stateroom	23
Master Head	23
Master Walk-In Closet	23

Master Port View	24
Lower Foyer Starboard View	24
Lower Foyer Forward View	24
VIP Stateroom	24
VIP Head	24
Guest Stateroom 2	24
Guest Stateroom 2 Head	25
Guest Stateroom 3	25
Guest Stateroom 3 Head	25
Lower Foyer Laundry	25
Pilot House Helm	25
Pilot House Seating	25
Pilot House Captain's Desk	26
Aft Deck	26
Cockpit	26
Cockpit	26
Flybridge Helm	26
Boat Deck	26
Boat Deck Cradles	27
Flybridge Seating	27
Bow Seat and Tanning Pad	27
Tenders	27
Engineer's Stateroom	27
Engine Room Forward View	27
Engine Room	28
Electronics Room	28
Bow Shot	28
Aft Quarter Profile	28
Stern Shot	29

КОНТАКТЫ	30
Контактная информация	30
Телефоны	30
Время работы	30
Адрес	30

ХАРАКТЕРИСТИКИ

Обзор

The 2001/2011 120' Crescent Yachts, "Valkyrie" is a world-class sportfishing yacht and was the brainchild of an experienced yachtsman with specific needs in mind. This specialized vessel has an air draft of 19'6" when her arch is folded for easy access to The Great Lakes, a draft of 6'6" for easy access to The Bahamas, just under 10,000 USG of fuel capacity for 6,000 mile range, an enormous, fully equipped cockpit for billfishing, an 8,000 davit which can launch tenders to port, aft or starboard of the reinforced flybridge, a dedicated gasoline cell for fueling the tenders, 1,800 hp MTU 16V2000 diesels which can provide an 18 knot cruise speed, extra refrigeration and a beautifully decorated interior. She has received over 6 million dollars of continuous maintenance including paint, teak decks and replacement of the original engines with new ones. "Valkyrie" is in top condition and is ready to travel again immediately. "Valkyrie" offers the most effective way to sportfish on a world-class level.

Основная информация

Тип судна: Моторная яхта	Подкатегория: Кубрик
Модельный год: 2001	Год постройки: 2001
Год обновления: 2011	Вид обновления: Mechanical and Exterior
Страна: United States	Верх: 2351
Открытая палуба мостика: Да	Кубрик: Да

Размеры

Длина общая: 120' 0" (36.58m)	Ширина: 25' 0" (7.62m)
Мин. осадка: 6' 6" (1.98m)	Трапы: 19' 6" (5.94m)
Длина привального бруса: 119' 11" (36.55m)	

Скорость, вместимость и масса

Крейс. скорость: 17 Kts. (20 MPH)

Крейсерская скорость поворота: 1950 Kts.

Макс. скорость: 21 Kts. (24 MPH)

Макс. скорость поворота: 2325 Kts.

Вместимость воды: 1202 Gallons

Объем топливного бака: 9550 Gallons

Размещение

Всего кают: 4

Всего коек: 6

Спальные места: 8

Всего ком. состава: 6

Каюта капитана: Да

Каюты экипажа: 3

Койки экипажа: 5

Спальных мест экипажа: 6

Комм. состав экипажа: 3

Корпус и палуба

Материал корпуса: Fiberglass

Материал палубы: Teak over Fiberglass

Комплектация корпуса: Semi-Displacement

Цвет корпуса: White

Дизайнер корпуса: Jack Sarin Naval Architects

Дизайнер экстерьера: Jack Sarin Naval Architects

Дизайнер интерьера: Robin Rose & Associates

Информация о двигателе

Двигатели: 2

Производитель: MTU

Модель: 16V2000 M90

Тип двигателя: Inboard

Тип топлива: Diesel

ПОДРОБНОЕ ОПИСАНИЕ

Accommodations

Entering the salon through the electrically-actuated door from the aft deck, the open, warm and inviting feel of this yacht is immediately evident. Large windows bring light in and sections of grass cloth combined with fabric-covered furniture and carpet compliment the amazing mahogany woodwork beautifully.

Separated from the Salon only by low cabinetry and mahogany columns,

the dining area contains a formal table which seats eight. Built-in cabinetry on the bulkhead forward of the table has a granite serving surface above and below, a refrigerator and ice machine as well as dedicated china and crystal storage behind mahogany doors with grass cloth inserts. Flanking a large art recess are lit display shelves on either side. Moving forward and to starboard the entrance to a beautiful day head is followed by a granite floored foyer for a formal side entrance. An art alcove is on the inboard wall and access to the helm stairs and galley are ahead of that. The well-appointed Galley is very large with a four seat breakfast bar/island in the center and seating for eight around a large dinette. Burled wood inserts for the mahogany cabinets along the forward bulkhead hide clever, additional refrigeration.

Forward and to port of the dining room is another side entrance as well as the staircase down to the foyer for the staterooms. Two doors open to the full-beam Master Stateroom, forward. Along with a master head with two vanities and a two person shower, the Master Stateroom is quite grand. Following the trend from the rest of VALKYRIE, beautiful woodwork is everywhere and is accompanied by light-colored grass cloth wall covering and natural light in almost every room providing a bright, open feel even with all the gorgeous mahogany. This balance carries through the other three staterooms accessed from the same foyer.

VALKYRIE's pilot house has electronics suited for travelling the world. There are two separate areas for full-sized charts to be used and a captain's office area in view of the helm. A large L-shaped settee is raised to provide excellent views through the upgraded 1" tempered glass windshield sections and a single Stidd captain's chair is within easy reach of the helm and proper navigation equipment.

Traveling up from the pilot house, the flybridge helm and two wing stations are properly equipped for easy operation. On the same level, a grill and bar are across from another large seating area. All of this is surrounded by a three sided enclosure.

The boat deck was built with a large amount of extra structure to accommodate an 8,000 lb davit which can launch the 24'5" Edgewater center console, the Novurania 530 17'4" RIB or either of the two Kawasaki skis to port, aft or starboard with minimal lean, by design.

The boat deck covers a large aft deck which shades a dining area and additional day head. Facing aft and overlooking the huge fishing cockpit is a long counter with four teak chairs. This is

a great place to watch the action in the cockpit which has seen many 1,000 lb. + marlin. A 130 lb. class fighting chair on an offset lies in the center of the cockpit and just aft of the full function tackle centers and in-deck fish box which is plumbed with chipped ice from the Eskimo machine. Outriggers, rod holders and a tuna door accompany the teak decks and covering boards and there's even a back-down helm station above, facing aft on the boat deck.

This amazing yacht was built to travel the world and has been to Alaska, Hawaii, The Galapagos Islands, Australia, The Med and many other places. She has been beautifully maintained and upgraded as needed. She must be seen in order to understand the multitude of fantastic design features.

Watch the amazing Valkyrie video: <http://youtu.be/uZ6J7IbBpt4>

Salon

- Starboard Access to Dining and Side Entrance Foyer
- Port Access to Side Entrance and Stairs Down to Staterooms
- Mahogany "Rope" Columns
- Mahogany Crown Moulding
- Mahogany Cabinets Below Windows
- Lockable Storage in Sofa
- Majeure Headliner
- Halogen Lighting (Dimmable)
- Electrically Actuated Blinds
- NEC TV Viewable From Lifted Or Lowered Position
- Kaleidescape A/V
- Crestron A/V Controller
- Surround Speakers in Ceiling
- Electrically Actuated Salon Door

Dining

- U-Line Wine Refrigerator
- U-Line Ice Maker
- U-Line Refrigerator
- Halogen Lighting (Dimmable) Electrically actuated Blinds

Day Head

- Headhunter Toilet
- Custom Fixtures
- Granite Counter

- Mahogany Cabinets beneath Sink
- Mahogany Crown Moulding
- Halogen Lighting
- Granite Flooring

Galley

- L-Shaped Galley
- Work Island
- Granite Counter Tops
- Tile Floors with Granite Key Tiles
- Custom Corner SS Cabinet Storage Rack
- Large Capacity Storage Cabinets and Drawers
- (3) Refrigeration/Freezer Units Hidden Behind Cabinet Doors in Fwd Bulkhead
- Large Granite Dinette Table Top With Lockable Slide
- Access to Crew Accommodations Forward
- Privacy Door Hidden In Wall Trim

Master Stateroom

- King-Sized Master Berth
- Gold “Rope” Rails on Shelves
- Panasonic TH-42PW3 42 Inch TV
- Kaleidescape
- Surround Sound
- Halogen Lighting (Dimmable)
- Glass-Front Book Shelves Above Night Stands
- Reading Lamps
- Mahogany Lower Wall Sections and Chair Rails
- Grass Cloth Upper Wall Sections
- Mahogany Crown Moulding
- Mahogany Doors with Burled Wood Inlays
- Desk to Port With Raised Panel Drawer Facing and Burled Cabinet Doors
- Carved Mahogany Seahorse on Cabinetry above desk
- Cedar Lined Closet to Port
- Chest of Drawers and Cabinets to Starboard
- Walk-In Closet to starboard (With Escape Hatch for Master SR) Port Lights port and starboard

Master Head

- Granite Counters and Flooring
- Gold and Crystal Fixtures
- Mahogany Cabinetry and Trim
- Halogen Lighting (Dimmable)
- (7) Medicine Cabinets Behind Mirrors
- Raised Panel Mahogany Drawers and Cabinets Beneath Counters
- Grass Cloth Wall Covering
- Flush-Mounted Speaker in Ceiling
- Separate Toilet Room
- Large, Walk-In Shower
- (2) Speakman Shower Heads
- Separate Water/Temperature Controls
- Non-Polished Floor Stripes for Non-Skid

VIP Stateroom

- Queen-Sized Bed
- Bed-Side Tables
- Halogen Overhead Lighting
- Halogen Reading Lights
- Mahogany Bookshelf Above Bed
- Padded Headboard
- Large Portlight
- TV
- Mahogany Crown Moulding

VIP Head

- Headhunter Toilet
- Marble Topped Vanity
- Marble Flooring
- Marble Shower
- Gold Fixtures
- Halogen Lighting (Dimmable)
- Mahogany Cabinetry
- Mahogany Crown Moulding
- Hamper
- Drawers
- Port Light

Guest Stateroom 3

- Queen-Sized Bed

- Bed-Side Tables
- Halogen Overhead Lighting
- Reading Lights
- Padded Headboard
- Large Portlight
- TV
- Mahogany Crown Moulding

Guest Stateroom 3 Head

- Headhunter Toilet
- Granite Topped Vanity
- Marble Floor with Granite Keys
- Marble Showers
- Nickel and Gold Fixtures
- Halogen Lighting (Dimmable)
- Mahogany Cabinetry
- Mahogany Crown Moulding
- Hamper
- Drawers
- Port Light

Guest Stateroom 4

- Over/Under Bunks
- Halogen Lighting
- Reading Lamps
- Cedar-Lined Closet
- Drawers

Guest Stateroom 4 Head

- Headhunter Toilet
- Granite Topped Vanity
- Granite Shower
- Mahogany Crown Moulding
- Mahogany Cabinets and Drawers
- Mirrored Medicine Cabinet
- Halogen Lighting

Pilothouse

- Main Helm

- Captain's Desk
- Lenovo Computer
- Wireless Keyboard
- HP 6500 Printer/Copier/Fax/Scanner
- NEC AccuSync 193i Monitor
- Chart Storage
- (2) Chart Surfaces with Chart Lights
- Large, Raised L-Shaped Observation Seating with Granite Topped Table
- Bench Seat Adjacent To Helm
- Stidd Captain's Chair
- Halogen Lighting
- Windshield Defrosters
- Upgraded 1" Tempered Glass

Fly Bridge

- Full function Helm
- 3 Stidd Chairs
- Wing Stations with Jog Stick, Throttles/Gears and Bow Thruster Control
- L-Shaped Seating with Dining Table
- Storage Beneath Seating
- Stainless Steel Grill with Propane Storage Beneath
- Refrigerator
- Ice Machine
- Storage Cabinets
- Aluminum, Rigid Top From Arch To Windshield
- Three Sided Enclosure
- Hinged Radar Arch
- Kaleidescape Music Control

Boat Deck

- 8,000 lb. Capacity Nautical Structures Custom Hydraulic w Telescope, Lift and 270 degree Turn Capability
- 24'5" Edgewater Center Console
- 17'4" Novurania
- (2) Kawasaki Skis
- Removable, Flush Mounted Dinghy Cradles
- Fresh Water Quick Disconnect Fitting
- Cushioned Seating w Storage Beneath
- Jerry Can Storage Boxes
- Covered Storage Box Beneath Novurania

- Quick-Deploy Back-Down Station for Aft Rail
- Removable Hoop Rails
- Access to Aft Deck Stairs with Sliding Hatch

Aft Deck

- Dinette
- Air Conditioning Vented Behind Dinette
- Teak Decks
- Wing Doors
- Side Deck Access
- Flybridge Access Steps
- Refrigerator
- Bottle and Glass Storage
- Salon Access
- Port and Stbd Access to Cockpit with Gates
- Aft-Facing Bar Overlooking Cockpit
- Storage Lockers
- Starboard Side Docking Station
- Kaleidescape Music Control

Aft Deck Head

- Vacuflush Head (Separate From Main System)
- Vanity with Sink
- Air Conditioned
- Halogen Lighting
- Accessed From Aft Deck

Cockpit

- 130 lb class Fighting Chair with Offset
- Outriggers
- In-Deck Fishbox
- Eskimo Ice Chipper Discharge in Fishbox
- Rod Holders
- Teak Decks
- Freeing Ports with Closeable Covers
- Teak covering Boards
- Transom Tuna Door w Gate
- Tackle Centers

- Bait Freezer
- Cutting Board
- Tackle Drawers
- Gasoline Fueling Hose
- Diesel Fueling Hose
- Live Bait Well
- Lexan Front for Live Well
- Lights for Live Well
- Lazarette Access
- Corner Hawse Pipes
- Cleats
- (2) Maxwell VC 3500 Warming Winches
- Quartz Lights

Side Decks and Foredeck

- Teak Decks
- High Bulwarks
- Retractable Rod and Handle Storage in Overheads
- 316L Stainless Steel Rails
- 316L Cleats
- Freeing Ports
- Gates and Doors Through Bulwarks with Tide Ride Steps
- Bow Seating
- Sun Pad
- Bosun's Lockers
- Fire Hose
- Storage for Fire Fighting BAs
- Fuel Ports
- Fresh Water Quick Disconnects
- Compressed Air Quick Disconnect
- Through-Bow Anchoring System
- (2) Maxwell VCW 4500 Windlasses
- (2) 150kg 330lb Bruce SS Anchors
- Ship's Bell

Engineer's Room

- Desk
- Systems Monitor
- Laptop
- Work Bench

- Snap-on Built-In Tool Chest
- Vice
- Atlas System
- AC Switching
- Miele Front Load Washer and Dryer
- Pirelli Rubber Flooring
- Dive Locker for BCs, etc.
- Bauer Junior II Dive Compressor
- Water-Tight Door to Cockpit
- Water-Tight Door to Engine room
- Access to Engineer's Stateroom
- Maritron Ship Security and Alarm Control Panel

Engine Room

- (2) 2011 MTU 16V2000 M90 1,800hp
- Twin Disk 3:1 Marine Gears
- (2) 65kw Northern Lights Generators
- White surfaces
- LED Backlit Sight Glasses for Fuel Cells
- Fuel Tank Valving
- Alpha Laval Fuel Polishing System
- Oil Change Pump
- Steering Hydraulics
- Stabilizer and Thruster Hydraulics
- Delta T Ventilation System
- AC Florescent Lighting
- DC Lighting
- (2) Village Marine 2880 GPD Water Makers
- Dual Double Detroit Diesel Sea Pro 511 Water/Fuel Separators
- Engine Fuel Priming Pumps
- Crash Valve with Quick Disconnect and Auxiliary Hose
- LED Lighting Beneath Engines
- All Non-Submersible Pumps located above ER Floor Level
- Fuel Transfer Manifold
- AC Fuel Transfer Pump
- DC Fuel Transfer Back-up Pump
- AC Steering Pump
- DC Back-up Steering Pump
- Raw Water Sea Chests
- AC Headhunter Mach V Fresh Water Pump
- Duplicate Back-up Pump Plumbed into System

Engineer's Stateroom

- Over/Under Bunks
- Reading Lights
- Halogen Lighting
- Carpet
- Hanging Locker
- Drawers
- Sink, Mirror and Vanity
- En-Suite Head with Shower Stall and Toilet
- TV
- DVD Player

Captain's Stateroom

- Queen Berth
- Reading Lights
- Halogen Lighting
- Carpet
- Cedar Lined Closet
- Storage Cabinets and Drawers
- En-Suite Head
- Maritron Security and Alarm Control Panel

Crew Stateroom 2

- V-Berth
- Reading Lights
- Halogen Lighting
- Cedar Lined Closets
- Drawers and Cabinets
- Carpet
- Hall Access to Full Head

Hull

- Sarin Design
- Deep Prop Pockets
- Airex Composite Coring
- Awlgrip Paint Above Waterline
- Bottom Paint

- (9) Aqualuma LED Underwater Lights
- Fiberglass Over Teak Lower Rub Rails

Machinery

Main Engines Engine Type: Diesel MTU 16V2000 M90 1,800hp Engine Hours: 3,800 Gearboxes for Main Engines: Twin Disk Drive: Straight Shaft, Fixed Propeller Speed Consumption per hours including generator/Range RPM Maximum: 21 knots/2,325 RPM Cruising: 17 knots/1,950 RPM Economical: 10 knots/3,550 range/1,170 RPM Extended: 8 knots/6,000 range/850 RPM Generators & Electricity Output: 65kw Generators: 2X Northern Lights 65 kw, Stbd: 6248 SMOH; Port: 7029 SMOH Generator Fuel Consumption: 4 gph Shore Power: 2X 208v Triple Phase, 100 ft. Atlas System Glendinning Cablemaster Batteries Main Engine Starting: 24v (4) 12v SVR Gel Cell House: 24v (12) 2v Gel Cell 2X Trace Inverters

AC 60Hz

DC 24v

Air Conditioning Type: Marine Air Chilled Water (4) Chillers Other Machinery Watermakers: (2) Village Marine 2,880 GPD Stabilizers: Naiad Multi-Sea 2000 Bow Thruster: American Bow Thruster (ABT) Hydraulic Steering System: Kobelt Fuel Separator & Filtration: DD Sea Pro 511 Sewage System: None Fresh Water System: AC Lube Oil Capacity: 230 gal Waste Oil Capacity: 230 gal

Communication Systems

SATcom: Fleet Broadband 250 Voice and Data Vsat: Sea Tel 4006 Telephone System: Panasonic KX-DT333 SSB: SEA 235 VHF: Icom WiFi: Onboard WiFi Receiver and Transmitter Intercom: Panasonic KX-DT333

Navigation Systems

The Pilothouse and Flybridge electronics are comprised of a combination of well-planned equipment and brand new upgrades. Pilothouse: 2X Furuno MU 190 HD Screens 3X Furuno MU 150 HD Screens Furuno 2135 S Band 96 mile Radar Furuno 2115 X band 96 mile Radar Raytheon/Anshutz Pilotstar D Autopilot Furuno FCV1200L Color Sounder Furuno NX-300 Navtex Receiver Furuno FA-150 Universal AIS 2X Furuno RD 33 Information Repeaters 2X Northstar 6100i GPS Sea 235 Single Side Band Radio ICOM IC-M604 VHF ICOM IC-M505 VHF 2X MTU EDM Engine Information Display MTU/DDC Single Lever Gear/Throttle Controls ABT Bow Thruster Control Stick Touch Screen Engine Room Blower Controls Naiad Multisea 2000 Stabilizer Controls Thrane and Thrane Satellite Phone Handset 2X Carlisle and Finch Search Light Control Kahlenberg M-511C/D Horn Control Exalto Windshield Wiper/Washer Control PC Navigation System Panasonic KX-DT333 Phone/Intercom 2X Onboard PC's 2X Transas 4000

Navigation Systems Flybridge: Furuno GP7000F GPS/Chart Furuno RD33 Information Repeater 3X Furuno MU 150 HD Screens Icom M604 VHF Anschutz Pilotstar Autopilot MTU/DDC Single Lever Gear/Throttle Controls AMT Bow Thruster Control 2X Carlisle and Finch Searchlight Control 2X MTU EDM Engine Information Displays

Entertainment System

Audio/Video Equipment Crestron Kaleidescape Media System with (6) players KServer 5000 Crestron Media Controller System CNX-PAD8A

Galley and Laundry Equipment

Main Galley Sub-zero 690 Side-by-Side Refrigerator/Freezer Dacor Oven Thermador 5-burner Ceramic Stove Recessed Exhaust Vent Sharp Carousel Convection Microwave Oven Miele Futura Dishwasher Kitchenaid Trash compactor Thermador Warming Drawer 3X Refrigeration Units Hidden Behind Burled Cabinetry Additional Equipment Propane Grill on Flybridge Laundry Main Laundry: Miele T8019 C Dryer; Miele W 3033 Washing Machine Crew Laundry: Miele T 8019 C Dryer; Miele W 5825 Washing Machine

Tenders and Toys

Edgewater 245 Center Console with (2) 4-stroke Yamaha 150 Novurania 530DL with New Yamaha 4-stroke 115 2X Kawasaki STX-15F Diving Equipment: Brownie's Junior Dive Compressor 8X Dive Tanks 4X Tank Filler Connections

Deck Equipment

Anchor Windlass: 2X Maxwell VWC 4500 Hydraulic Aft Warping Capstans: 2X Maxwell VC 3500 Hydraulic Anchors: 2X 330 lb. (150 kg) Bruce Galvanized Anchor Chain: 2X 492' (150 m) 5/8" chain per side Boat Crane and Davits: 1X 270 Degree Nautical Structures 8,000 lb. Davit with extension Passerelle: 1X Carbon Fiber, Manual, Folding Swimming access through Tuna Door Gasoline and Diesel Fueling Stations in Cockpit

Security, Safety & Fire Protection

Security CCTV System: Bosch DIVAR Controller Cameras: (4) Port, Stbd, Cockpit, ER; (1) HD on Masthead Monitors: Helms and Engineer Room Maritron Ship Security System Maritron Ship Alarm System **Fire Fighting Equipment** Fire Control System: FM-200 Automatic Fire Suppression System Fire Hose Stations: 4X Hose Stations Breathing Apparatus: 2X Sabre Sigma II, Self Contained Alarms: Recorder Voice and Horn Alerts (23) Hand-Held Fire Extinguishers (2) Fire Fighting Suits **Safety Equipment** 2X Life Rafts, 8 man 3X Life Rings 2X

GME Auto GPS EPIRBS Sea Anchor/Drogue 1X ACR Satellite EPIRB 3X ACR SART's 30X Solas Type 1 Life Jackets 8X Inflatable Life Jackets **Medical Equipment** 2X (3) Litre Tanks of Medical Oxygen with Delivery System 1X Headstart Defibrillator MCA Class A Medical Kit

Exclusions

Owner's personal effects and art work. A full inventory of exclusions to be provided at time of fully executed Purchase Agreement.

Исключения

При продаже яхты исключаются личные вещи владельца.

Отказ от ответственности

Компания предоставляет описание судна или яхты добросовестно, но не может гарантировать точность этой информации, а также не ручается за техническое состояние. Покупатель должен проинструктировать своих агентов или оценщиков исследовать представленную информацию более подробно, по собственному желанию. Продажа судна или яхты, изменение цены или снятие с продажи будет происходить без предварительного уведомления.

ФОТОГРАФИИ

120' Crescent



Salon



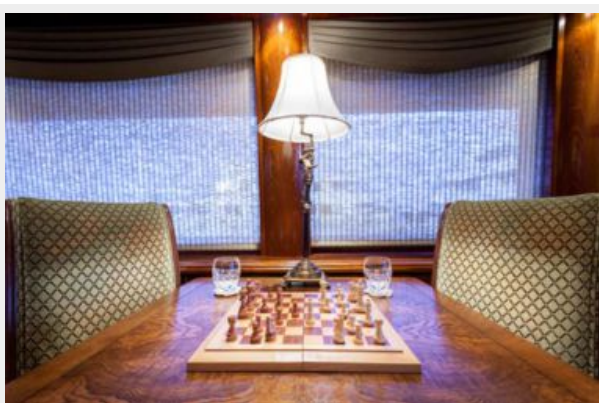
Dining



Dining Forward View



Salon Game Table



Day Head



Galley



Galley Island



Galley Dinette



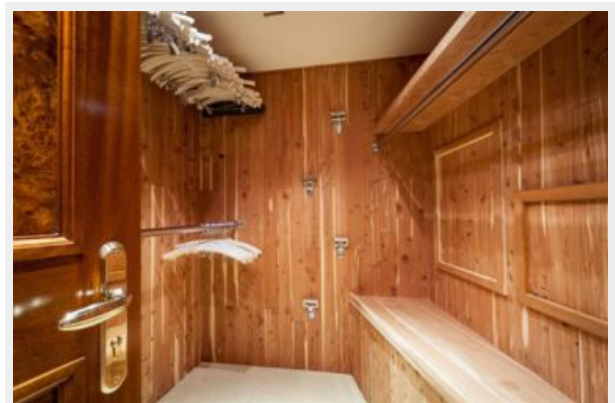
Master Stateroom



Master Head



Master Walk-In Closet



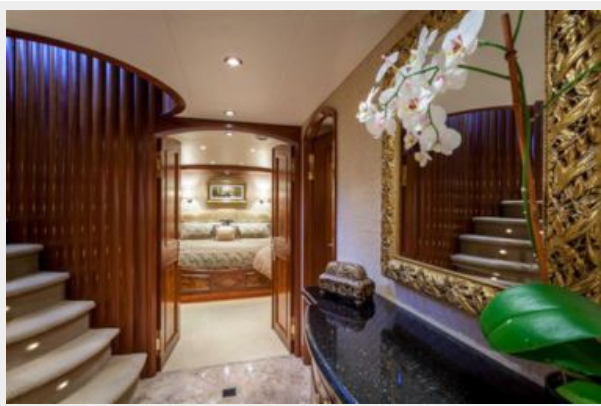
Master Port View



Lower Foyer Starboard View



Lower Foyer Forward View



VIP Stateroom



VIP Head



Guest Stateroom 2



Guest Stateroom 2 Head



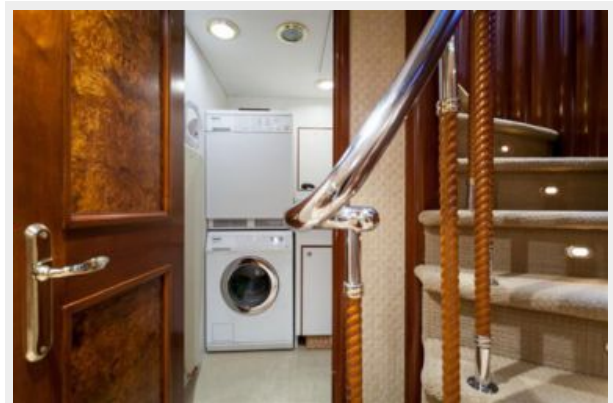
Guest Stateroom 3



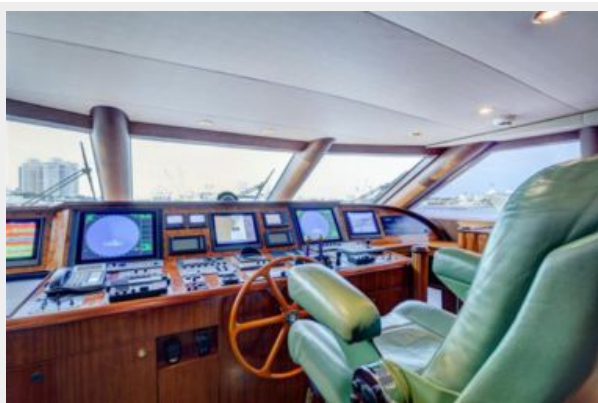
Guest Stateroom 3 Head



Lower Foyer Laundry



Pilot House Helm



Pilot House Seating



Pilot House Captain's Desk



Aft Deck



Сockpit



Сockpit



Flybridge Helm



Boat Deck



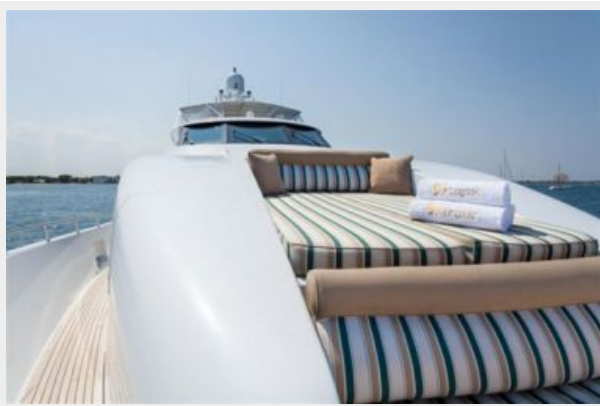
Boat Deck Cradles



Flybridge Seating



Bow Seat and Tanning Pad



Tenders



Engineer's Stateroom



Engine Room Forward View



Engineer Room



Electronics Room



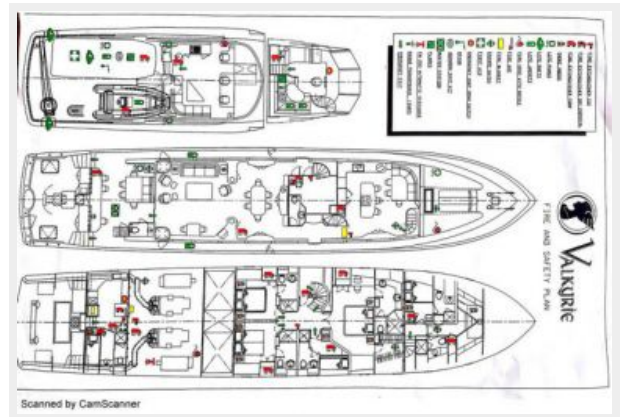
Bow Shot



Aft Quarter Profile



Stern Shot



КОНТАКТЫ

Андрей Шестаков (Andrey Shestakov) – ведущий яхтенный брокер отдела продаж яхт и судов компании Shestakov Yacht Sales Inc. Официальный представитель Shestakov Yacht Sales Inc. для русскоговорящих клиентов в центральном офисе компании в Майами/Форт Лодердейл/Флорида/США.

Контактная информация

Email: andrey@shestakovyachtsales.com

Web: shestakovyachtsales.com

Телефоны

Краснодарский край: **+7(918)465-66-44**

США, Майами, Флорида: **+1(954)274-4435**

Время работы

Понедельник – Суббота: **9:00 - 21:00**
EDT

Воскресенье: **Закрето**

Адрес



Harbour Towne Marina, 850 NE 3rd St,
STE 213, Dania, FL 33004