

ITHAKI — BRISTOL YACHTS



Builder: BRISTOL YACHTS

Year Built: 1988

Model: Cruising Sailboat

Price: PRICE ON APPLICATION

Location: United States

LOA: 41' 0" (12.50m)

Beam: 12' 11" (3.94m)

Min Draft: 4' 0" (1.22m)

Max Draft: 10' 0" (3.05m)

Our experienced yacht broker, Andrey Shestakov, will help you choose and buy a yacht that best suits your needs ITHAKI — BRISTOL YACHTS from our catalogue. Presently, at Shestakov Yacht Sales Inc., we have a wide variety of yachts available on our sale's list. We also work in close contact with all the big yacht manufacturers from all over the world.

If you would like to buy a yacht ITHAKI — BRISTOL YACHTS or would like help answering any questions concerning purchasing, selling or chartering a yacht, please call +1(954)274-4435

TABLE OF CONTENTS

TABLE OF CONTENTS	2
SPECIFICATIONS	3
Overview	3
Basic Information	5
Dimensions	5
Speed, Capacities and Weight	5
Accommodations	5
Hull and Deck Information	6
Engine Information	6
PHOTOS	7
CONTACTS	10
Contact details	10
Telephones	10
Office hours	10
Address	10

SPECIFICATIONS

Overview

This Bristol 41.1 is a rare find! Restored to better than original, she is ready to set sail with a new Yanmar Engine, new generator, air conditioning, in-mast furling, centerboard with 4' draft, two cabins and much more! This is not a project boat, the pictures are recent and she is even more beautiful in person! Call today! Specs Builder: Bristol Yacht Company Designer: Ted Hood Flag of Registry: United States Keel: Centerboard Hull Shape: Displacement Dimensions LOA: 41 ft 1 in Beam: 12 ft 11 in LWL: 33 ft 4 in Minimum Draft: 4 ft 0 in Maximum Draft: 10 ft 0 in Displacement: 26530 lbs Ballast: 10500 lbs Engines Engine 1: Engine Brand: Yanmar Year Built: 2012 Engine Model: 4JH5E Engine Type: Inboard Engine/Fuel Type: Diesel Engine Hours: 15 Propeller: Folding propeller Engine(s) Total Power: 40 HP Accommodations Number of single berths: 2 Number of double berths: 2 Number of cabins: 2 Number of heads: 2 Electronics Radar VHF Autopilot Log-speedometer TV set Navigation center Wind speed and direction Plotter Radio Depthsounder GPS Compass Cockpit speakers Sails Furling mainsail Furling genoa Rigging Steering wheel Electric winch Inside Equipment Hot water Electric bilge pump Deep freezer Oven Refrigerator Air conditioning Electric head Manual bilge pump Electrical Equipment Shore power inlet Electrical Circuit: 110V Outside Equipment/Extras Cockpit table Cockpit cushions Outboard engine brackets Davits Electric windlass Covers Bimini Top Cockpit cover

Mechanical - Electrical - Plumbing

Yanmar 40 H.P. (New 50 hours) 4JH5E

Entec 4100 Generator (New 65 hours)

Dripless Stuffing Box

Raritan 10 Gallon Hot Water Heater

Aluminum Fuel Tanks 100 Gals.

Racor Fuel Filters for engine and generator

12v AC System

Marinco Shore power cord and inlet

Magnum Inverter

GFCI Outlets

12v DC System with two 8D Batteries and one 27 amp battery

34 Gallon Holding Tank**Manual Head with Lectra San****Polyethylene Water Tank 160 Gals.****Cruisair A/C Units (2)****Hull and Deck****Hull Painted with Dark Blue Awlgrip****Petit Red Bottom Paint 1 year old****Rudder is FRP, S/S Shaft; foam filled****3 Blade Bronze feathering prop****Stainless Steel Bow Pulpit****Anchor Locker****Ideal Anchor Winch with foot control****Teak Toerail****S/S Rails****Deck Hardware is Marine Great S/S; chocks, cleats, fairleads, latches, fittings, fuel fills, water fills, SS Vent Cowls, SS Dorades****Lewmar Deck Hatches****Lazarette: Autopilot linkage, fuel tank, generator, mufflers, rudder post, steering and storage****Winch Inventory: Lewmar 56 (2), Lewmar 43, 40 and 46****Canvas Dodger and Bimini****Complete Mooring Cover****SS Dinghy Davit****Courtesy 12v lights**

45# CQR Anchor at bow with 200' 3/8" chain

Fenders and Docklines

Keel Stepped Aluminum Mast

Sloped Rigged

Full Keel

Chain plates SS Rod

Turnbuckles S

Basic Information

Category: Cruising Sailboat

Model Year: 1988

Year Built: 1988

Country: United States

Cockpit: Yes

Dimensions

LOA: 41' 0" (12.50m)

LWL: 33' 4" (10.16m)

Beam: 12' 11" (3.94m)

Min Draft: 4' 0" (1.22m)

Max Draft: 10' 0" (3.05m)

Speed, Capacities and Weight

Displacement: 26530 Pounds

Holding Tank: 34 Gallons

Fuel Capacity: 100 Gallons

Accommodations

Total Cabins: 2

Hull and Deck Information

Hull Material: Fiberglass

Engine Information

Engines: 1

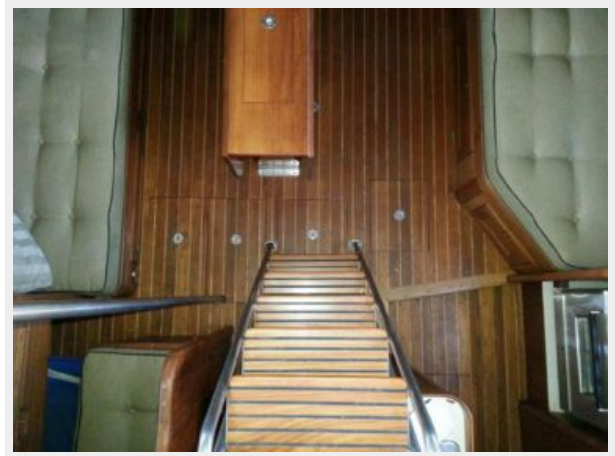
Manufacturer: Yanmar

Model: 4JH5E

Engine Type: Inboard

Fuel Type: Diesel

PHOTOS







CONTACTS

Andrey Shestakov, leading yacht broker of the sales department of Shestakov Yacht Sales Inc. Shestakov Yacht Sales Inc., the official representative of the Miami/Fort Lauderdale FL headquarters.

Contact details

Email: andrey@shestakovyachtsales.com

Web: shestakovyachtsales.com/en/

Telephones

USA: +1(954)274-4435

Office hours

Monday – Saturday: **9:00 - 21:00** EDT

Sunday: **closed**

Address



Harbour Towne Marina, 850 NE 3rd St,
STE 213, Dania, FL 33004